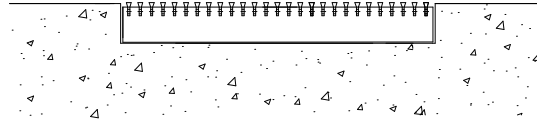




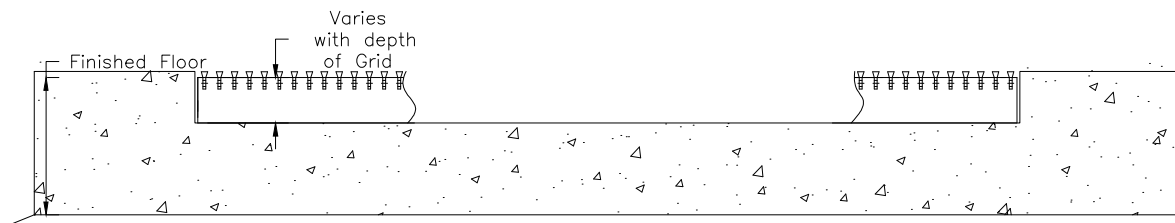
INSTALLATION INSTRUCTIONS GRIDLINE II G6P WITH NO FRAME



1.) SITE PREP

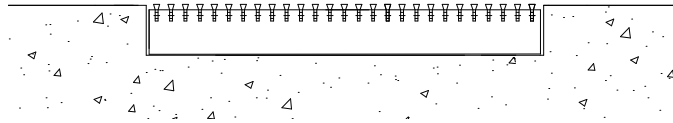
- USE WOOD FORMS TO PREPARE A RECESS IN THE CONCRETE A MINIMUM 1-1/4" DEPTH FOR 1-1/8" GRILLE AND 7/8" FOR 3/4" GRILLE TO FINAL FINISHED FLOOR SURFACE.
- RECESS SHOULD BE MADE TO OVERALL SIZE OF UNIT, PLUS 1/16" ON ALL SIDES OF THE RECESS TO ALLOW FOR CLEARANCE.
- AFTER CONCRETE HAS CURED, REMOVE THE WOOD FORMS.
- IMPORTANT THE BED SURFACE MUST BE SMOOTH AND LEVEL TO ENSURE PROPER GRID INSTALLATION, ALIGNMENT, AND TO PREVENT TRIPPING HAZARDS.
- (SEE ILLUSTRATION A) BELOW

(ILLUSTRATION A)





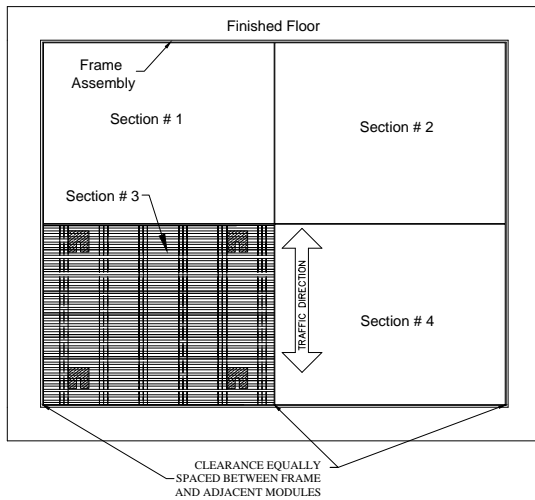
**INSTALLATION INSTRUCTIONS
GRIDLINE II G6P WITH NO FRAME**



5.) GRIDLINE INSTALLATION

- TRIAL FIT THE GRIDLINE MODULES AT LOCATIONS INDICATED ON THE SHOP DRAWINGS WITHIN THE FRAMES, SO EACH MODULE IS ALIGNED AND EVENLY SPACED BETWEEN RECESS WALL AND ADJACENT MODULES (SEE ILLUSTRATION C1). LOCKDOWN TABS ARE WELDED TO EACH MODULE AT 36" TO 48" O.C. MARK ALL LOCK DOWN FASTENER LOCATIONS ON THE PIT SURFACE THEN REMOVE ALL GRID MODULES. STAND MODULES ON END AND HANG SCREWS AND WASHERS IN SLOTTED OPENINGS OF LOCK DOWN TABS. USE ELECTRICAL TAPE ON THE UNDERSIDE OF THE LOCK DOWN TO HOLD SCREW AND WASHER IN PLACE (SEE ILLUSTRATION C1A). DRILL ALL FASTENER HOLES AT MARKED LOCATIONS. (NOTE: 3/8" HOLE AT 5/8" DEPTH). INSTALL EXPANSION ANCHORS. (NOTE: USE ONE OF THE SCREWS TO TIGHTEN THE EXPANSION ANCHOR BEFORE INSTALLING THE GRIDS). REPEAT FOR ALL MODULES. REPLACE ALL MODULES AT INTENDED LOCATIONS.
- USE THE 1/8" HEX TOOL (HIDDEN LOCKDOWNS) TO START EACH FASTENER INTO EACH EXPANSION ANCHOR. ONCE ALL ARE ENGAGED, SNUG ALL FASTENERS TIGHT. STARTING FROM THE CENTER WORKING OUT TOWARDS THE PERIMETER IN A ROTATING MANNER. REPEAT FOR ALL MODULES. (SEE ILLUSTRATION C2).

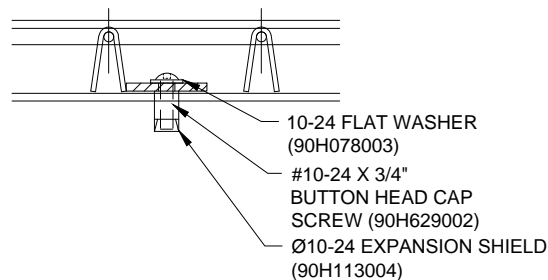
(ILLUSTRATION C1)



(ILLUSTRATION C1A)



(ILLUSTRATION C2)





INSTALLATION INSTRUCTIONS GRIDLINE II G6P WITH NO FRAME

6.) COMPLETION

IT IS NECESSARY TO COVER THE INSTALLATION WITH 3/4" PLYWOOD UNTIL ALL ADDITIONAL PROJECT WORK IS COMPLETED. THIS WILL PROTECT THE GRIDLINE FROM POTENTIAL ABUSE DURING THE CONSTRUCTION PHASE. DAMAGE OCCURRING FROM INADEQUATE PROTECTION DURING THIS PHASE MAY VOID THE MANUFACTURER'S WARRANTY.

7.) CARE AND MAINTENANCE INSTRUCTIONS

- MANUFACTURER'S SUGGESTED SAFE ROLLING LOAD FOR THE GRIDLINE G6 IS 500# PER WHEEL. HEAVY LOADS BEYOND THIS WEIGHT MAY DAMAGE THE UNITS, CONTRIBUTING TO THEIR PREMATURE FAILURE OR CREATING A TRIPPING HAZARD.
- CLEAN THE RECESS AS FREQUENTLY AS NECESSARY. THIS WILL PREVENT AN EXCESS BUILDUP OF DIRT UNDER THE GRIDS.
- CLEAN THE TOP SURFACE OF THE GRIDS WITH A STIFF BRISTLE BRUSH AND HOUSEHOLD CLEANER. REMOVE ALL CLOGGED OR CAKED MATERIALS FROM BETWEEN ALL WIRE OPENINGS.
- PERIODICALLY REMOVE GRIDS TO DEEP CLEAN RECESS AND GRID WITH A POWER WASHER.
- REPLACEMENT OF THE GRIDLINE MODULES, REPLACE EACH MODULE TO ORIGINAL POSITION AND ENGAGE ALL FASTENERS PRIOR TO FINAL TIGHTENING OF EACH FASTENER. CLEANING ENABLES GRIDLINE TO FUNCTION AS INTENDED. CALL US AT (800) 233-8493 (MUNCY) OR (888) 895-8955 (CANADA) AND OUR SALES GROUP WILL ASSIST YOU WITH SPECIAL NEEDS OR CONDITIONS, LOADING CONSIDERATIONS AND INSTALLATION RELATED ISSUES.



Fast Access to Online Resources



Muncy, Pennsylvania • (800) 233-8493 • Fax (570) 546-5169
Mississauga Ontario • (888) 895-8955 • Fax (905) 274-6241
www.csgroup.com

This document is the property of Construction Specialties, Inc. and contains CONFIDENTIAL PROPRIETARY INFORMATION that is not to be disclosed to third parties and is not to be used without approval in writing from Construction Specialties, Inc.