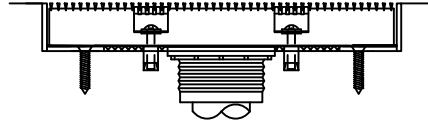


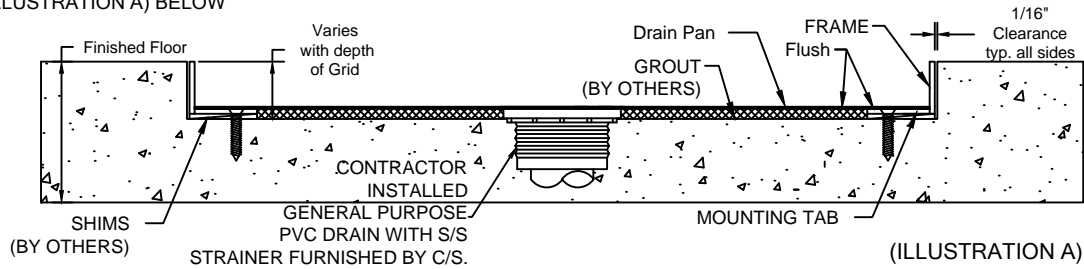


INSTALLATION INSTRUCTIONS GRIDLINE G6 WITH LB FRAME AND DRAIN PAN



1.) SITE PREP

- USE WOOD FORMS TO PREPARE A RECESS IN THE CONCRETE A MINIMUM 1-1/4" DEPTH FOR 1-1/8" GRILLE, 3/4" FOR 5/8" GRILLE, AND 1/2" FOR 3/8" GRILLE TO FINAL FINISHED FLOOR SURFACE.
- RECESS SHOULD BE MADE TO OVERALL SIZE OF UNIT, PLUS 1/16" ON ALL SIDES OF THE RECESS TO ALLOW FOR CLEARANCE.
- ENSURE THE FRAMES EXPOSED SURFACE WILL BE FLUSH WITH THE FINISHED FLOOR.
- AFTER CONCRETE HAS CURED, REMOVE THE WOOD FORMS.
- (SEE ILLUSTRATION A) BELOW



2.) ASSEMBLE FRAME

- ASSEMBLE THE FRAME. THE CORNERS OF THE FRAME PIECES WILL BE A BUTT JOINT WITH THE WIDTH DIMENSION OVERLAPPING THE TRAFFIC DIRECTION DIMENSION. THE FRAME MOUNTING TABS ARE PRE-DRILLED TO ALLOW FOR QUICK ASSEMBLY.

3.) SET FRAME

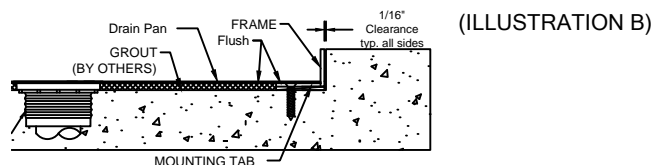
- SET THE FRAME ASSEMBLY IN THE FORMED RECESS.
- SHIM THE FRAME AS REQUIRED 24" O.C. TO ELEVATE THE FRAME ASSEMBLY TO FINISHED FLOOR HEIGHT.
- BEFORE FASTENING, DOUBLE CHECK THE FINISHED FLOOR SURFACE HEIGHT, AND ENSURE THAT FRAME ASSEMBLY IS BOTH PLUMB AND SQUARE.
- DRILL A PILOT HOLE THROUGH FRAME AT EACH MOUNTING TAB HOLE LOCATION AND USE A 5/32" MASONRY ANCHOR BIT TO DRILL HOLE INTO CONCRETE.
- INSTALL EACH 3/16" MASONRY ANCHOR. (ANCHORS INCLUDED IN HARDWARE PACKAGE)
- CLEAN THE CONCRETE RECESS TO REMOVE ALL DIRT, OILY FILM, AND DEBRIS.

4.) GROUT

- GROUT THE CONCRETE PIT SURFACE TO BRING BOTTOM OF RECESS FLUSH WITH TOP OF FRAME MOUNTING TAB USING A WATERPROOF SELF-LEVELING GROUT (SEE ILLUSTRATION B).
- RECOMMENDED BRANDS:
 - QUIKRETE #1585
 - FOR TECHNICAL ASSISTANCE, CALL QUIKRETE @ 800-282-5828
 - VINYLCRETE
 - FOR TECHNICAL ASSISTANCE, CALL UMACO INC. @ 978-453-8881
- POUR AND LEVEL GROUT USING MOUNTING TABS OF THE FRAME OPENING AS SCREED POINTS.
 - TO FIND IMPERFECTIONS IN YOUR SUBFLOOR, USE A LONG STRAIGHTEDGE (8FT LEVEL). LAY THE STRAIGHTEDGE ACROSS THE SUBFLOOR. MARK ALL GAP LOCATIONS BETWEEN STRAIGHT EDGE AND SUBFLOOR WITH A FELT MARKER. NEXT, APPLY PRESSURE TO EACH END OF THE STRAIGHTEDGE TO DETERMINE IF IT WILL ROCK OR TIP TO ONE SIDE. IF THERE IS ANY MOVEMENT, FIND THE HIGH SPOT AND MARK IT WITH A FELT MARKER.
 - MAKE YOUR WAY METHODICALLY ACROSS THE INSTALLATION LOCATION USING THE STRAIGHTEDGE TO LOCATE AND MARK ALL IMPERFECTIONS IN THE SUBFLOOR.
 - USE A SELF-LEVELING, QUICKSET COMPOUND TO RE-LEVEL ALL MARKED LOW SPOTS.
 - USE A GRINDER TO LEVEL ALL MARKED HIGH SPOTS. (DG-70 DIAMOND GRINDER AND A-101 PULSE VAC)
 - FOLLOWING THE REPAIR OF ALL LOW AND HIGH SPOTS, RE-CHECK THE SUBFLOOR AGAIN TO CONFIRM THAT THE SURFACE IS LEVEL.
 - REPEAT REPAIR PROCEDURE IF NECESSARY.
 - ALLOW THE GROUT MATERIAL SUFFICIENT TIME TO CURE PROPERLY BEFORE INSERTING THE GRIDLINE WITHIN THE FRAMED OPENING.

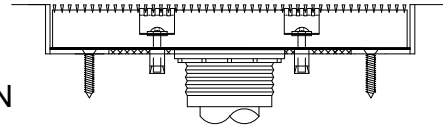
IMPORTANT: THE BED SURFACE MUST BE SMOOTH AND FLAT TO ENSURE PROPER GRID INSTALLATION, ALIGNMENT, AND TO PREVENT TRIPPING HAZARDS.

ALLOW THE GROUT MATERIAL SUFFICIENT TIME TO CURE PROPERLY BEFORE INSERTING THE GRIDLINE WITHIN THE FRAMED OPENING.





**INSTALLATION INSTRUCTIONS
GRIDLINE G6 WITH LB FRAME AND DRAIN PAN**



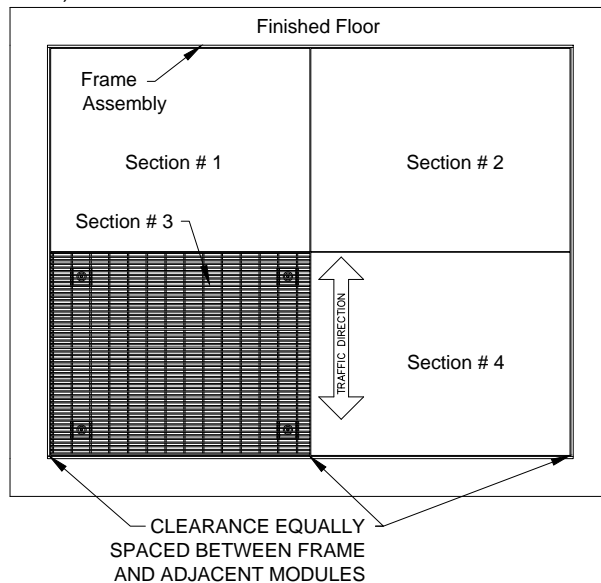
5.) DRAIN PAN INSTALLATION

- PANS WILL BE PRE-CUT TO FIT INSIDE THE FRAMES.
- APPLY A COMPLETE COATING OF CONSTRUCTION ADHESIVE TO RECESS OPENING AND SET PAN IN THE RECESS OPENING.
- APPLY A THIN BEAD OF SILICONE SEALANT AT ALL SEAMS AND AROUND THE PERIMETER OF THE PAN.

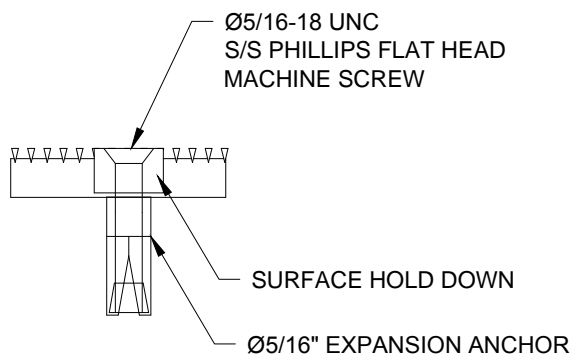
6.) GRIDLINE INSTALLATION

- TRIAL FIT THE GRIDLINE MODULES AT LOCATIONS INDICATED ON THE SHOP DRAWINGS WITHIN THE FRAMES, SO EACH MODULE IS ALIGNED AND EVENLY SPACED BETWEEN PERIMETER FRAMES AND ADJACENT MODULES (SEE ILLUSTRATION C1). MARK ALL LOCK DOWN FASTENER LOCATIONS ON THE PIT SURFACE AND ON THE GRID MODULES THEN REMOVE ALL GRID MODULES. DRILL ALL FASTENER HOLES AT MARKED LOCATIONS. (NOTE: HIDDEN LOCKDOWNS- 3/8" HOLE AT 5/8" DEPTH OR SURFACE LOCKDOWNS-9/16" HOLE AT 1-5/8" DEPTH). INSTALL EXPANSION ANCHORS. (NOTE: WITH WEDGE OF THE EXPANSION ANCHOR IN HOLE FIRST, USE SETTING TOOL PROVIDED TO SET THE EXPANSION ANCHOR BEFORE INSTALLING THE GRIDS). ATTACH ALL HIDDEN LOCKDOWN CLIPS WITH CAP SCREW AND RETAINING WASHERS ATTACHED TO THE GRIDLINE MODULE AT MARKED LOCATIONS AT 24" ON CENTER. REPEAT FOR ALL MODULES. REPLACE ALL MODULES AT INTENDED LOCATIONS.
- USE THE 1/8" HEX TOOL (HIDDEN LOCKDOWNS) OR PHILLIPS DRIVE (SURFACE LOCKDOWNS) TO START EACH FASTENER INTO EACH EXPANSION ANCHOR. ONCE ALL ARE ENGAGED, SNUG ALL FASTENERS TIGHT. STARTING FROM THE CENTER WORKING OUT TOWARDS THE PERIMETER IN A ROTATING MANNER. REPEAT FOR ALL MODULES. (SEE ILLUSTRATION C2 FOR SURFACE LOCKDOWNS AND ILLUSTRATION C3 FOR HIDDEN LOCKDOWNS).

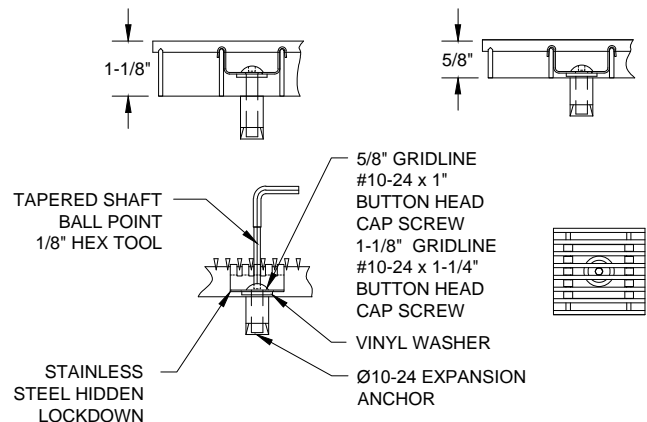
(ILLUSTRATION C1)



(ILLUSTRATION C2)



(ILLUSTRATION C3)





INSTALLATION INSTRUCTIONS GRIDLINE G6 WITH LB FRAME AND DRAIN PAN

7.) COMPLETION

IT IS NECESSARY TO COVER THE INSTALLATION WITH 3/4" PLYWOOD UNTIL ALL ADDITIONAL PROJECT WORK IS COMPLETED. THIS WILL PROTECT THE GRIDLINE FROM POTENTIAL ABUSE DURING THE CONSTRUCTION PHASE. DAMAGE OCCURRING FROM INADEQUATE PROTECTION DURING THIS PHASE MAY VOID THE MANUFACTURER'S WARRANTY.

8.) CARE AND MAINTENANCE INSTRUCTIONS

- MANUFACTURER'S SUGGESTED SAFE ROLLING LOAD FOR THE GRIDLINE G6 IS 500# PER WHEEL. HEAVY LOADS BEYOND THIS WEIGHT MAY DAMAGE THE UNITS, CONTRIBUTING TO THEIR PREMATURE FAILURE OR CREATING A TRIPPING HAZARD.
- CLEAN THE RECESS AS FREQUENTLY AS NECESSARY. THIS WILL PREVENT AN EXCESS BUILDUP OF DIRT UNDER THE GRIDS.
- CLEAN THE TOP SURFACE OF THE GRIDS WITH A STIFF BRISTLE BRUSH AND HOUSEHOLD CLEANER. REMOVE ALL CLOGGED OR CAKED MATERIALS FROM BETWEEN ALL WIRE OPENINGS.
- PERIODICALLY REMOVE GRIDS TO DEEP CLEAN RECESS AND GRID WITH A POWER WASHER.
- REPLACEMENT OF THE GRIDLINE MODULES, REPLACE EACH MODULE TO ORIGINAL POSITION AND ENGAGE ALL FASTENERS PRIOR TO FINAL TIGHTENING OF EACH FASTENER. CLEANING ENABLES GRIDLINE TO FUNCTION AS INTENDED. CALL US AT (800) 233-8493 (MUNCY) OR (888) 895-8955 (CANADA) AND OUR SALES GROUP WILL ASSIST YOU WITH SPECIAL NEEDS OR CONDITIONS, LOADING CONSIDERATIONS AND INSTALLATION RELATED ISSUES.



Fast Access to Online Resources



Muncy, Pennsylvania • (800) 233-8493 • Fax (570) 546-5169
Mississauga Ontario • (888) 895-8955 • Fax (905) 274-6241
www.csgroup.com

This document is the property of Construction Specialties, Inc. and contains CONFIDENTIAL PROPRIETARY INFORMATION that is not to be disclosed to third parties and is not to be used without approval in writing from Construction Specialties, Inc.