

## General Information

Open the pack list on the crate's exterior. Locate the shop drawings and installation instruction inside the box. Review contents and make sure all parts are present. For a rectangular installation, the pack list will include the number of modules and frame pieces. For odd-shaped installations, a drawing will be supplied identifying the module layout in numbered sequence.

If you discover that material is missing or defective, contact our customer service department immediately: **800.233.8493**

## Important Notes - Do Not Overlook

Prior to installation, ensure that the material is stored indoors and has acclimated to the environment's temperature for 24 hours.

Assess the site condition prior to installation ensuring the recess is:

- Free of debris and moisture
- The correct depth throughout
- Smooth and flat

High spots should be ground down. Low spots should be filled with a self-leveling grout. The side walls of the recess should also be checked for plumb and defects as this could affect the frame installation (if applicable). If these conditions have been met, you can begin the installation.

## Tools Required

You will need a level, rubber mallet, tape measure, shop vacuum, PPE (gloves, glasses, ear protection, etc.), caulk gun and a flathead screwdriver.

## Installation Instructions



**1** Dry fit all modules as shown on the supplied layout/shop drawings.



**2** Make alignment adjustments.



**3** Use a lift key tool to remove one module at a time. Place the module upside-down to expose mounting supports.

## Installation Instructions (continued)



**4** Substrate must be clean and free of debris for the adhesive to bond properly.



**5** Apply a liberal amount of adhesive\*\* on each mounting supports. Repeat for each module.



**6** Place module back into its recess. Repeat this process for all modules.



**7** Apply uniform pressure to the adhesive. Allow 24 hours for adhesive to dry before removing panels.



**8** If the building is still under construction, cover the system with plywood sheathing.



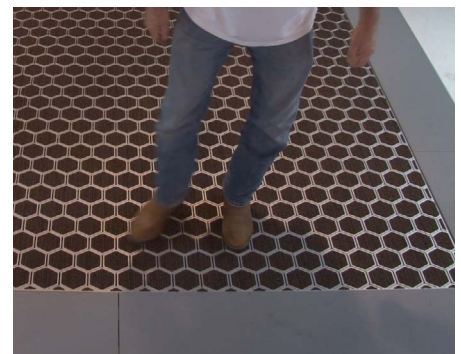
**9** Care & Maintenance: Use a vacuum to clean debris from the surface of the unit. A hot water extraction machine can also be used to remove more difficult, lodged debris.



**10** To remove module for cleaning, insert the lift key tool into the drain slot and lift.



**11** Inspect for damage and replace module after cleaning.



**12** Apply uniform pressure to engage the dual lock.