

PEDIMAT AA WITH THRESHOLD FRAME






INSERT STYLE:

INSERT COLOR: PLEASE ADVISE

CATALOG NUMBER: M2

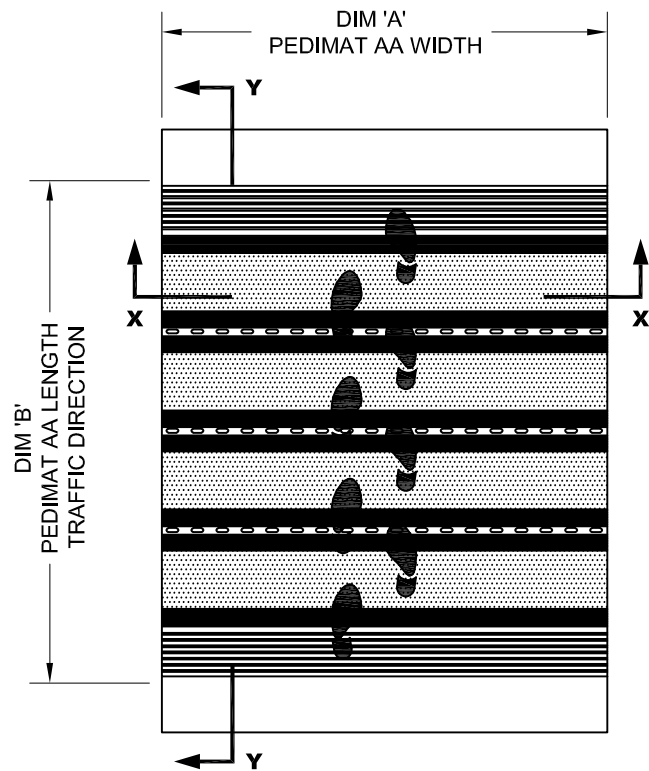
PART NUMBER:

NO.	REVISION	DATE	BY
NO.	F&F RELEASE	DATE	BY

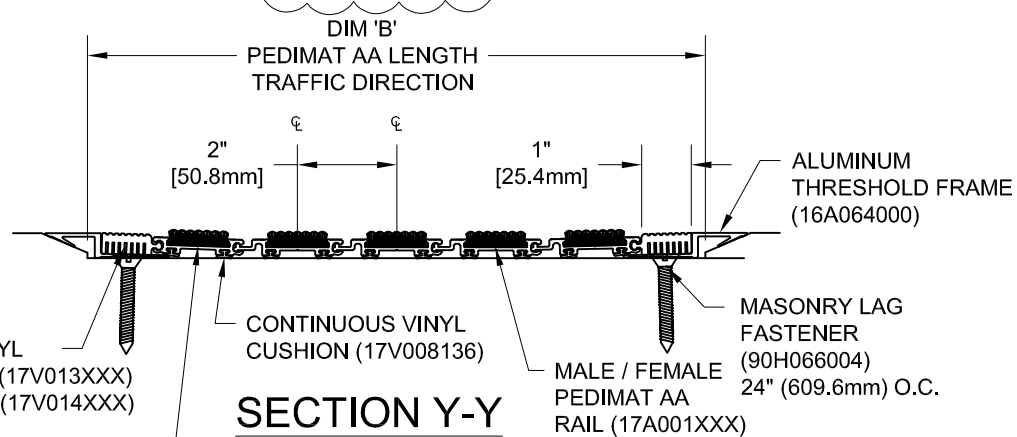
- | | | | | | | |
|---|---|---|---|--|---|---|
|  |  |  |  |  |  |  |
| RECYCLED RUBBER | EXTERIOR CARPET | HEAVY-DUTY CARPET | VINYL | VINYL-ABRASIVE | SERRATED ALUM. INSERT | POURED ABRASIVE INSERT |
| M2RR
19R001XXX | M2EC
19C018XXX | M2HC
19C010XXX | M2V
19V002XXX | M2VA
19M001XXX | M2SAI
19A001001 | M2PA
19A005XXX |

PEDIMAT AA INSERT STYLES

FIELD NOTE: DIM 'B' TO BE TAKEN FROM FACE OF DOOR THRESHOLD TO DOOR THRESHOLD.

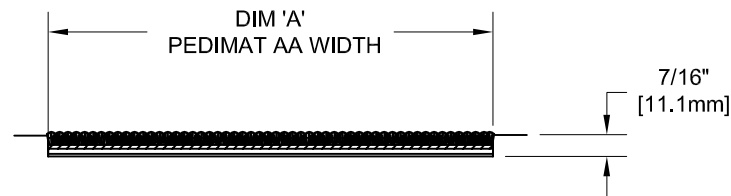


TYPICAL PLAN VIEW



SQUARE END VINYL
1" (25.4mm) WIDE (17V013XXX)
2" (50.8mm) WIDE (17V014XXX)

FEMALE PEDIMAT AA RAIL (17A002XXX)



NOTES:

*ALL SURFACES IN CONTACT WITH MASONRY ARE TO RECEIVE A COAT OF ZINC CHROMATE PRIMER

*MAX. SINGLE GRID SIZE NOT TO EXCEED 12'-0" (3.66M) IN WIDTH (DIM "A") OR 100 SQUARE FEET

*PLEASE VERIFY TRAFFIC DIRECTION

*PEDIMAT AA SHALL BE ABLE TO SUPPORT A 350 LB. ROLLING LOAD. LARGER LOADING MAY BE ACCOMODATED. CONTACT C/S SALES WITH SPECIFIC LOADING REQUIREMENTS.

*ADDITIONAL SPECIFICATIONS ARE CONTAINED IN THE LATEST C/S CATALOG OR AT C-SGROUP.COM AND ARE CONSIDERED PART OF THIS TRANSMITTAL.



PLEASE VERIFY ALL	QTY	MARK #	LOCATION	MODEL	DIM 'A' WIDTH	DIM 'B' LENGTH	FINISH	NOTES

PROJECT:		
LOCATION:		
CONTRACTOR:		
AGENT:		SHT:
DRG. BY:	DATE:	JOB NO.: