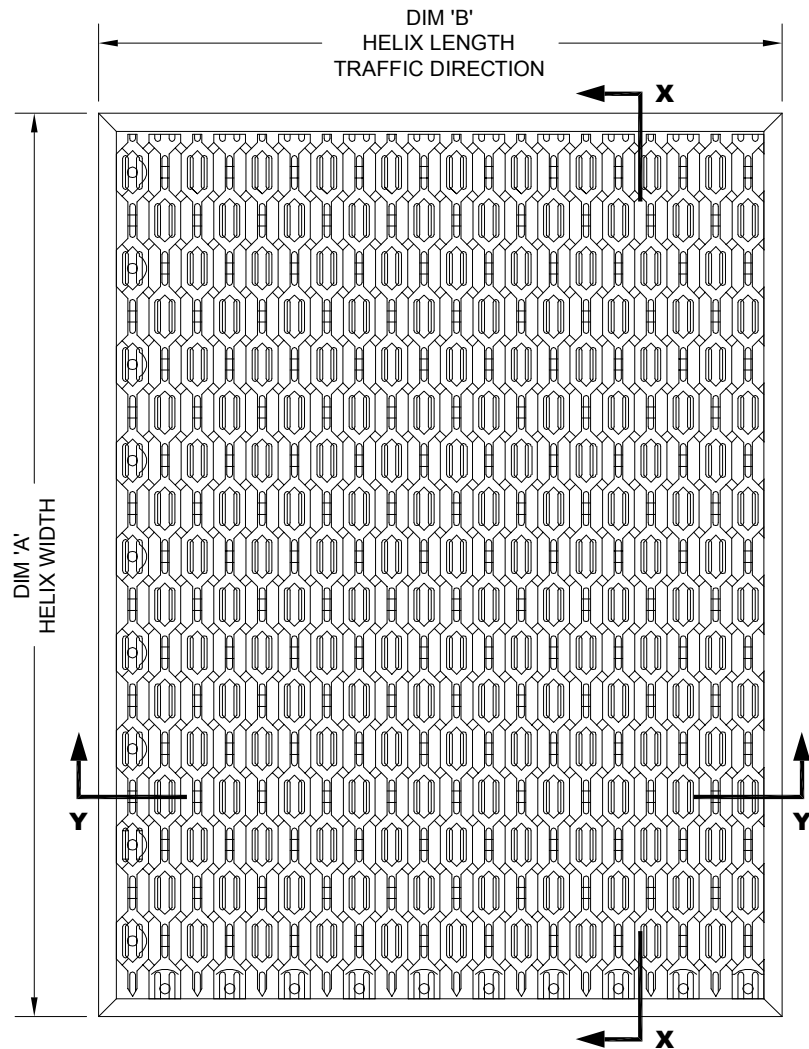


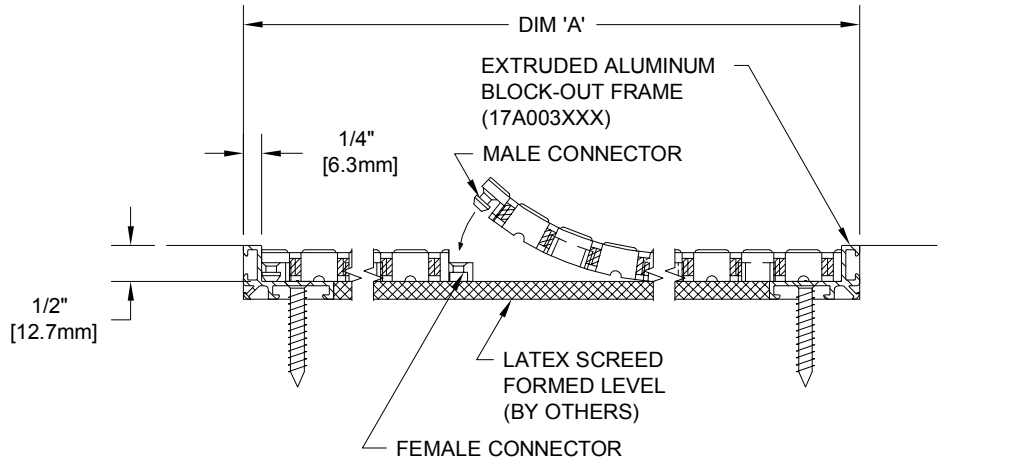
HELIX MODEL Z1 WITH ALUMINUM BLOCK-OUT FRAME

INSERT STYLE: Z1 INSERT COLOR: NA CATALOG NUMBER: HZ1 PART NUMBER: 181001XXX

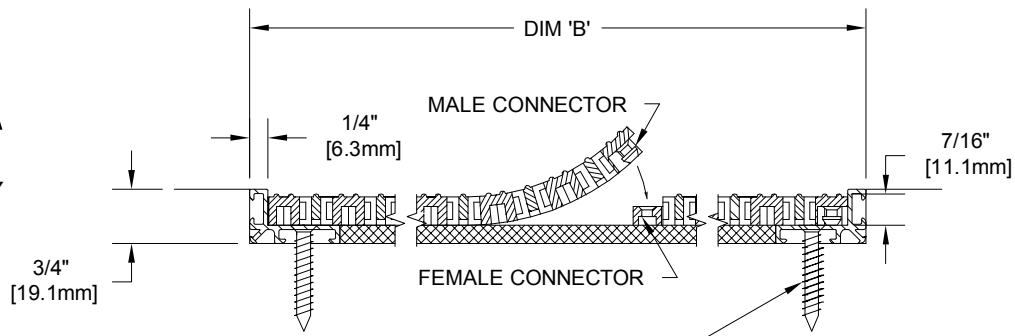
NO.	REVISION	DATE	BY
NO.	F&F RELEASE	DATE	BY



TYPICAL PLAN VIEW



SECTION X-X



SECTION Y-Y

MASONRY LAG FASTENER
(90H006004)
24\" (609.60mm) O.C.

NOTES:

*SUPPLIED IN 3' X 3' OR 4' X 3' MODULES TO SPEED FIELD ASSEMBLY. OPTIONAL SINGLE TILE BOXES (60 TILES) ARE AVAILABLE.

*ADDITIONAL SPECIFICATIONS ARE CONTAINED IN THE LATEST C/S CATALOG OR AT C-SGROUP.COM AND ARE CONSIDERED PART OF THIS TRANSMITTAL.

*HELIX Z1 IS ABLE TO SUPPORT A 600 LB ROLLING LOAD.

*INDIVIDUAL TILES MEASURE 12" WIDE BY 9" IN LENGTH.

PLEASE VERIFY ALL	QTY	MARK #	LOCATION	MODEL	DIM 'A' WIDTH	DIM 'B' LENGTH	MAT COLOR (BLACK, GRAY, OR BROWN)	FRAME FINISH

CS Construction Specialties™
8808 Route 408 Highway, Muncy PA 17788
 (800) 233-8495 · Fax: (570) 546-4622 · www.c-sgroup.com

PROJECT:
 LOCATION:
 CONTRACTOR:
 AGENT: SHT:
 DRG. BY: DATE: JOB NO.: