




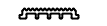

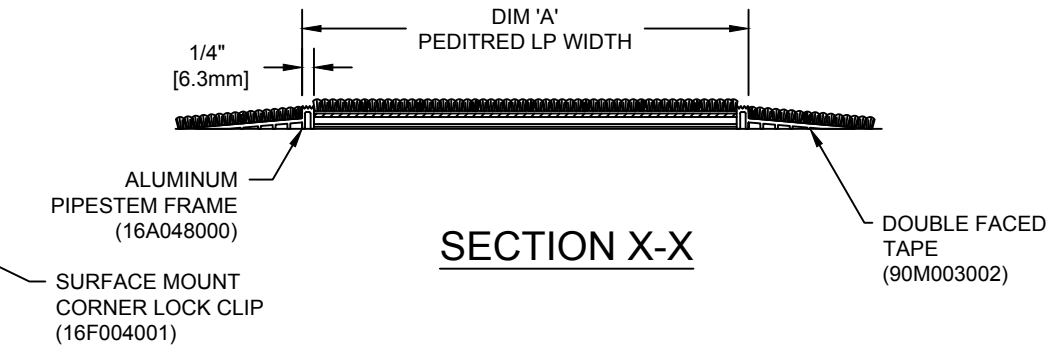
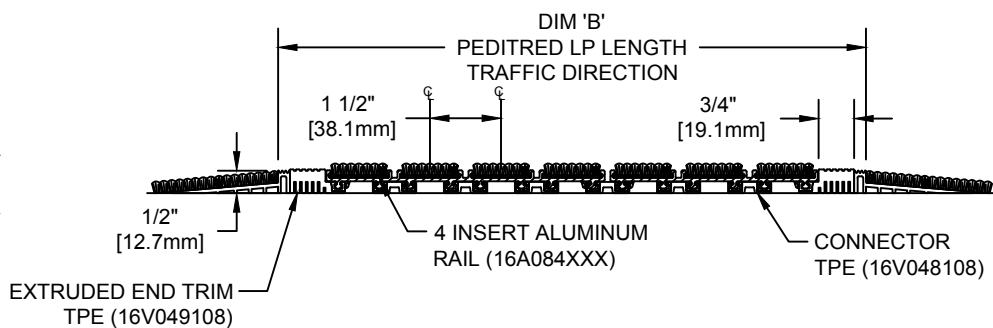
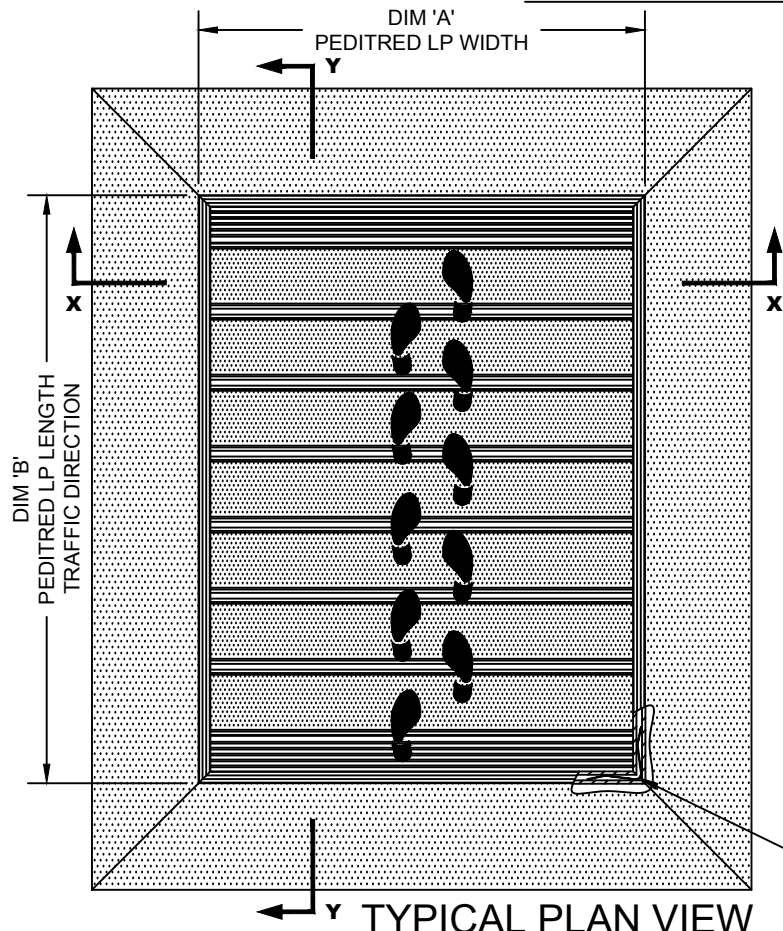


PEDITRED LP WITH ALUMINUM PIPESTEM FRAME

INSERT STYLE: INSERT COLOR: PLEASE ADVISE CATALOG NUMBER: G3 PART NUMBER:

NO.	REVISION	DATE	BY
NO.	F&F RELEASE	DATE	BY

- PEDITRED INSERT STYLES**
- 
RECYCLED RUBBER
 G3RR
 19R005XXX
 - 
EXTERIOR CARPET
 G3EC
 19C018XXX
 - 
HEAVY-DUTY CARPET
 G3HC
 19C010XXX
 19C022XXX
 - 
RUBBER
 G3V
 19V022501
 #8501 BLACK
 - 
VINYL ABRASIVE
 G3VA
 19A007XXX
 19M001XXX
 - 
SERRATED ALUM. INSERT
 G3SAI
 19A004001
 - 
POURED ABRASIVE INSERT
 G3PA
 19A005XXX



NOTES:

- *ALL SURFACES IN CONTACT WITH MASONRY ARE TO RECEIVE A COAT OF ZINC CHROMATE PRIMER
- *PLEASE VERIFY TRAFFIC DIRECTION
- *PEDITRED LP SHALL BE ABLE TO SUPPORT A 750 LB. ROLLING LOAD.
- *MAX. SINGLE GRID SIZE NOT TO EXCEED 12'-0" (3.66M) IN WIDTH (DIM "A") OR 3'-0" [.91M] IN LENGTH (DIM "B").
- *ADDITIONAL SPECIFICATIONS ARE CONTAINED IN THE LATEST C/S CATALOG OR AT C-SGROUP.COM AND ARE CONSIDERED PART OF THIS TRANSMITTAL.

CS Construction Specialties™
 6696 Route 405 Highway, Muncy PA 17756
 (800) 233-8493 • Fax (570) 546-4692 • www.c-sgroup.com

PLEASE VERIFY ALL	QTY	MARK #	LOCATION	MODEL	DIM 'A' WIDTH	DIM 'B' LENGTH	FINISH	NOTES

PROJECT:		
LOCATION:		
CONTRACTOR:		
AGENT:		SHT:
DRG. BY:	DATE:	JOB NO.: