



As an architect, you are faced with keeping up with new techniques for solving problems as well as the explosion of new products. The biggest challenge is identifying which ones will be most valuable to you and your clientele, and when you'll have time to study them.

C/S has been helping architects around the world solve design problems for over 60 years. We share our vast experience, information and expertise through our CES-registered courses. Refer to the enclosed course descriptions for available topics and credits awarded for each.

Our presenters offer participants valuable insight into the direction of our industry by exploring the proper application and specification of these products.

All presenters are highly knowledgeable in the practical and technical aspects of the presented subject matter. Scheduling requirements and availability are flexible. There is no cost to participants.



To schedule a CES-registered presentation or a tour of a C/S facility, please call C/S and we will make the necessary arrangements.

Wall Protection, Entrance Flooring & Expansion Joints Covers: 800.233.8493

Doors: 800.972.7214

Louvers, Sun Controls & Grilles: 800.631.7379

Solarmotion: 800.234.0010

Explovent: 888.895.8955

High Impact Interior Surfaces

Program Number: ACROV4

Life Extension for Interior Surfaces

Credit Awarded: 1 LU

Participants Will Learn:

- What causes damage to interior surfaces
- What is important for selecting appropriate wall protection
- A variety of wall protection applications
- Sustainability matters related to wall protection materials

High Impact Interior Surfaces

IDCEC Class Code: CC-10122

Life Extension for Interior Surfaces

Credit Awarded: 1 LU

Participants Will Learn:

- Important criteria for selecting appropriate wall protection
- A variety of common wall protection applications
- What building codes and ASTM tests apply to wall protection products
- How wall protection products can help to earn LEED® credits



High Impact Interior Doors & Frames

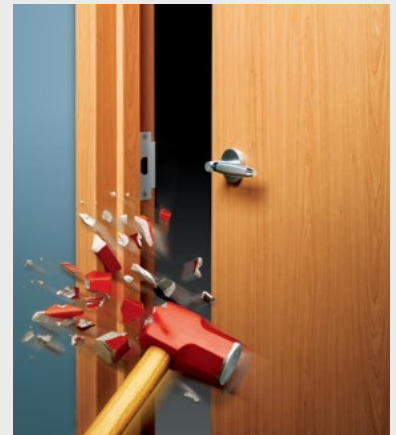
Program Number: DOORSFRAMES

Interior Doorways: Life Extension Through Design

Credits Awarded: 1 LU; 1 HSW

Participants Will Learn:

- Designer and Owner needs for commercial interior doorways
- The pitfalls of traditional doorways and doorway protection
- Industry guidelines and standards for performance
- Doorway design solutions to increase durability
- Specification tips to ensure longevity and quality



Entrance Flooring

Program Number: EFS200

Entrance Flooring Functionality, Liability & Aesthetics

Credits Awarded: 1 LU; 1 HSW

Participants Will Learn:

- The zone approach to dirt prevention
- The short and long term costs of flooring maintenance
- The importance of trapping dirt at the door
- LEED® credit information
- How clean, dry floors reduce slip/fall liability
- Expanding design options
- Information about *Cradle to Cradle Certified™* products



Louvers

Program Number: LVR200
Louver Innovation-Advancements in Rain Defense
Credit Awarded: 1 LU; 1 HSW

Participants Will Learn:

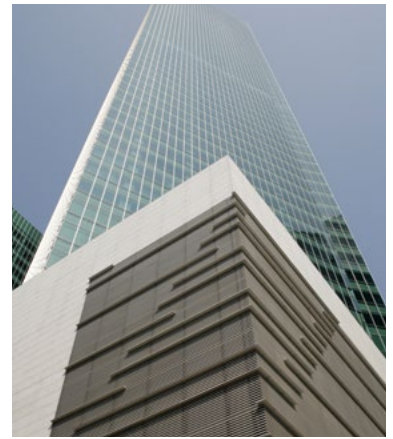
- Current trends & initiatives in the louver industry
- Important guidelines for louver selection
- How architects & designers address rain entry through louvers into buildings
- What criteria should be used when specifying louvers
- Louver selection & design considerations
- The importance of louver testing and certification (AMCA Standard 500-L wind driven rain testing; Miami-Dade County hurricane testing protocol)
- The future of louver-enhanced performance coupled with aesthetic flexibility

Louvers

Program Number: LVRTOUR
Testing Facility Tour & Louver Seminar
Credits Awarded: 4 LU; 4 HSW

Participants Will Learn:

- All LVR200 content
- About simulated testing at manufacturer's facility
- Tests simulated for attendees:
 - Air Pressure Drop testing
 - Point of Beginning Water Penetration test
 - Wind Driven Rain tests
 - Dade County/Florida Building Code Missile Impact testing



Exterior Sun Controls

Program Number: SHDG1
Sun Controls – a Sustainable Design Practice
Credit Awarded: 1 LU; 1 HSW

Participants Will Learn:

- Solutions to manage daylight & reduce solar heat gain
- Sunlight geometry information
- Options for conforming to LEED®
- Economic, environmental & human performance benefits of effective sun control
- Unique sun control applications & solutions through case histories
- System components & installation details
- How to select the right sun control system for your project
- *Cradle to Cradle Certified™* information

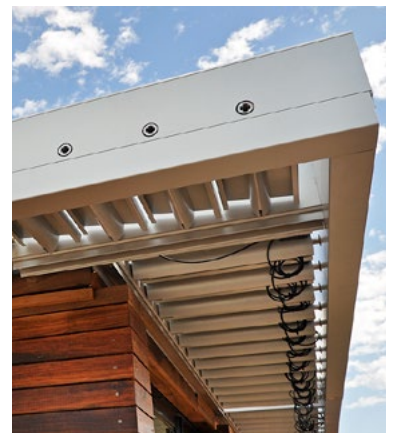


Operable Sun Controls

Program Number: SLRM01
Reducing Energy Consumption by Controlling Solar Heat Gain
Credits Awarded: 1 LU; 1 HSW

Participants Will Learn:

- Electricity consumption and the environment
- Some US energy programs & initiatives
- LEED® program "trade-offs"
- Glazing basics & heat gain factors
- Solar geometry interactions
- Computer modeling
- External solar shading system options



Expansion Joint Covers

Program Number: EJCPR1

Expansion Joint Covers

Credits Awarded: 1 LU; 1 HSW

Participants Will Learn:

- Expansion joint cover information
- Key issues & new products relating to today's requirements
- Types of building movements & how to address each through proper design and product selection
- Fire barrier types & options
- How to select the right cover for your project
- *Cradle to Cradle Certified™* information



Explosion & Pressure Relief Systems

Program Number: EXPLO2

Explosion & Pressure Relief Systems

Credits Awarded: 1 LU; 1 HSW

Participants Will Learn:

- What explosion relief is
- What industries have a true need for explosion venting products
- Types of explosions & catalysts as they relate to the industry
- Why explosion venting should be specified
- Code drivers & their impact on today's specifiers
- Explosion venting product selections



The full C/S product line can be viewed at www.c-sgroup.com

