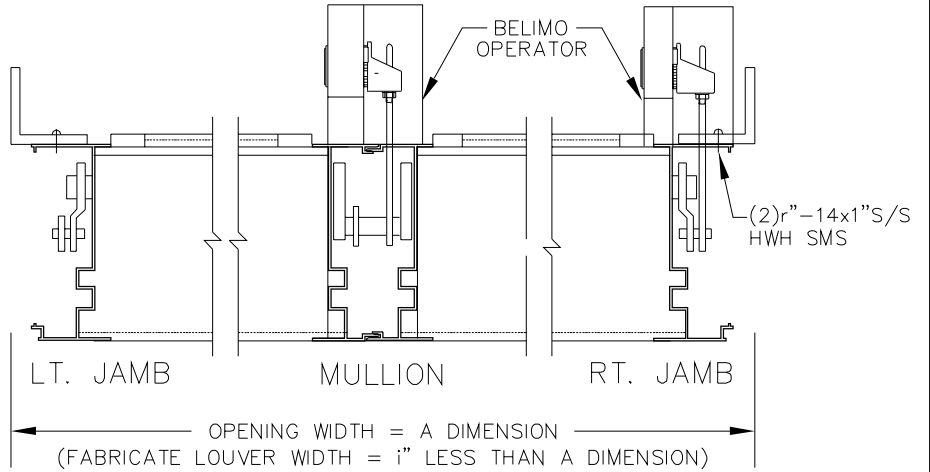
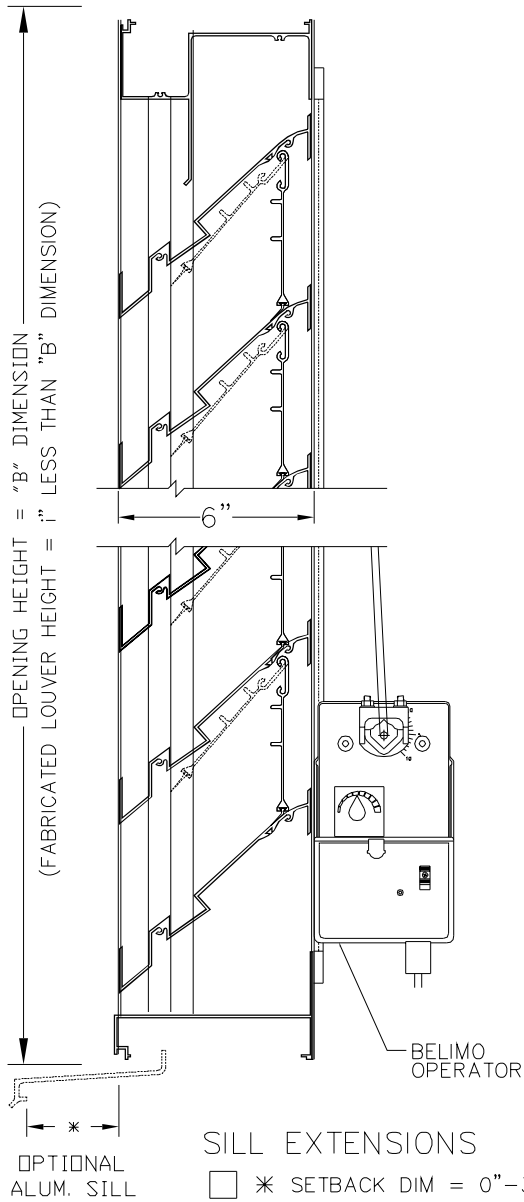


# DOUBLE DRAINABLE OPERATING LOUVERS – MODEL 6967 (BELIMO)

LOUVER FURNISHED WITH 1i"x1i"xe" ALUM.  
 CLIP ANGLES 24" O.C. (JAMBS ONLY) (MIN. 2 PER JAMB)  
 PERIMETER MOUNTING HARDWARE NOT BY C/S.



## SCREENS

- SCREEN NOT REQUIRED
- SCREEN REQUIRED
- INTERIOR MOUNTED
- EXTERIOR MOUNTED
- BIRDSCREEN (1/2" MESH)
- INSECT SCREEN (18x16 MESH)

## FINISHES

- STANDARD MILL
- FLUOROPOLYMER POWDER COAT
  - (1) OF C/S STD. COLORS
  - CUSTOM COLOR, C/S REQUIRES A COLOR CHIP FOR MATCHING
- ARCHITECTURAL CLASS I (DK. OR MED.) BRONZE ANODIC COATING
- 204-R1 CLEAR ANODIZE
- OTHER \_\_\_\_\_

C/S EXTRUDED ALUMINUM, DOUBLE DRAINABLE OPERATING LOUVER MODEL 6967. FRAMES AND BLADES TO BE FABRICATED FROM 6063-T52 ALLOY, WITH REINFORCING BOSSES AND A NOMINAL OF .080" (12 GA.) MATERIAL THICKNESS. ALL FASTENERS TO BE STAINLESS STEEL. MAXIMUM RECOMENDED BLADE LENGTH =

MARK	QTY.	"A" DIM.	"B" DIM.	NUMBER OF MULLIONS	OPERATOR LOCATION	LOCATION	REMARKS
							CKD. BY:

Construction Specialties, Inc.  
 49 Meeker Avenue  
 Cranford, New Jersey 07016  
 (908) 272-5200  
 Fax (908) 272-6038

PROJECT:	DRAWN BY:
CUSTOMER:	DATE:
ARCH'T:	DWG. NO:
AGENT:	SHEET OF