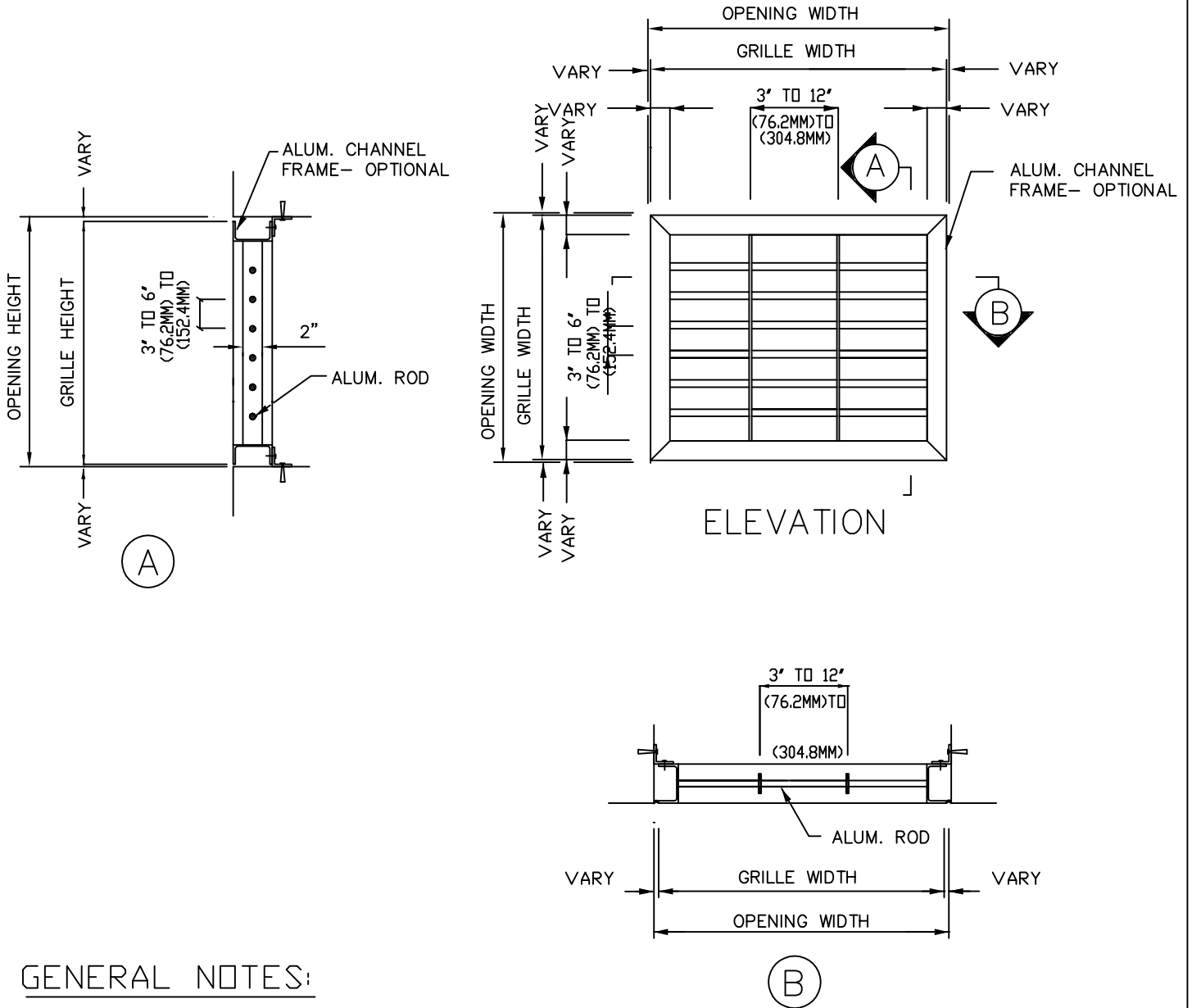


# SENTRY



## GENERAL NOTES:

ALUMINUM GRILLE SHALL BE C/S SENTRY GRILLE- AS MANUFACTURED BY CONSTRUCTION SPECIALTIES, INC. ALUMINUM COMPONENTS SHALL BE EXTRUDED ALUMINUM OF 6063-T5 ALLOY. ALL FASTENERS TO BE STAINLESS STEEL.

Revisions				Drawn By	Job
No.	Date	By		Checked By	Contr.
				Date Approv	Arch't.
				Scale	Agent:
				Date	Sheet BF
					Drawing No.

