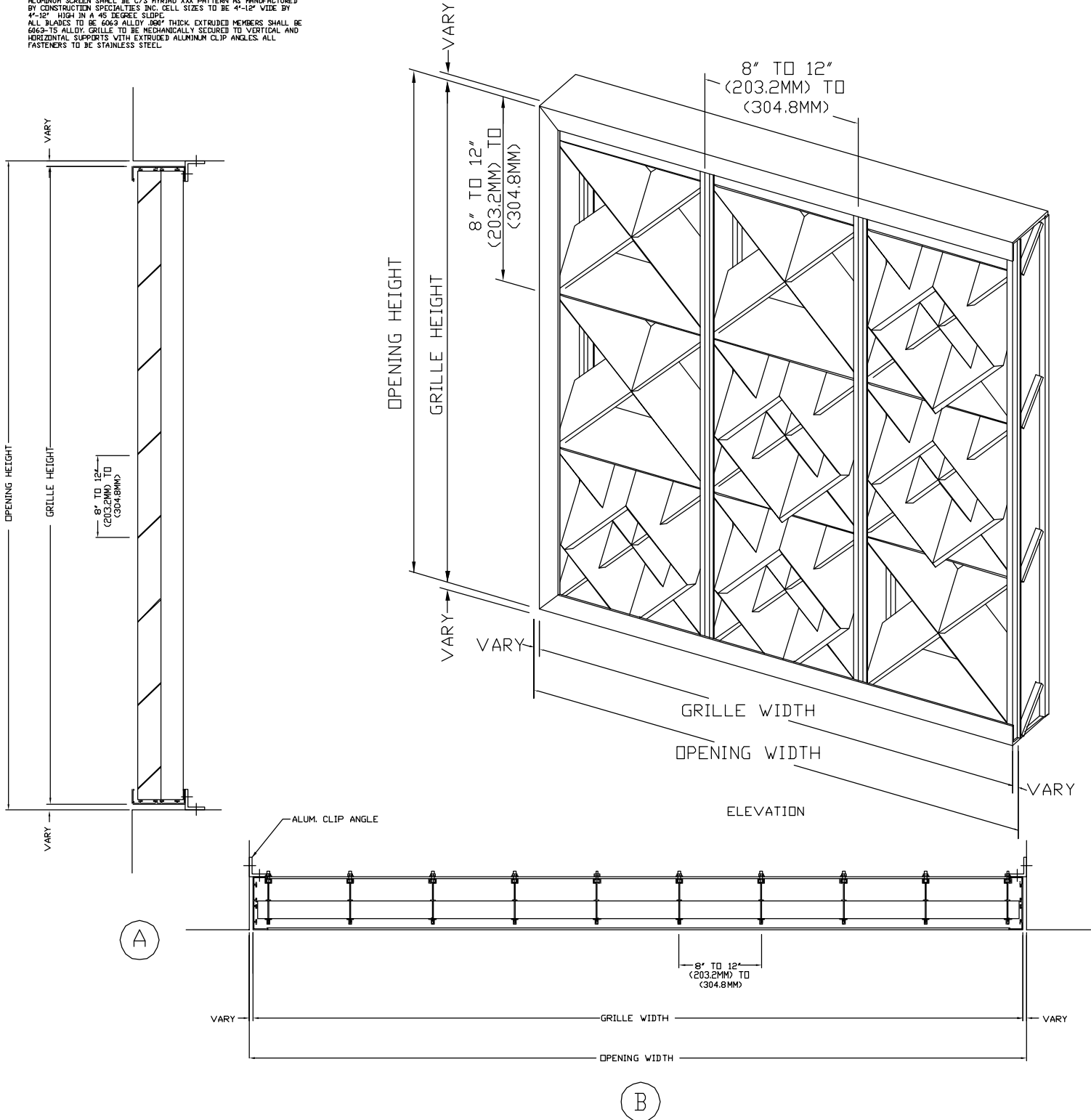


MYRIAD PALACE

GENERAL NOTES

ALUMINUM SCREEN SHALL BE C/S MYRIAD XXX PATTERN AS MANUFACTURED BY CONSTRUCTION SPECIALTIES INC. CELL SIZES TO BE 4'-12" WIDE BY 4'-12" HIGH IN A 45 DEGREE SLOPE.
 ALL BLADES TO BE 6063 ALLOY, .008" THICK, EXTRUDED MEMBERS SHALL BE 6063-T5 ALLOY. GRILLE TO BE MECHANICALLY SECURED TO VERTICAL AND HORIZONTAL SUPPORTS WITH EXTRUDED ALUMINUM CLIP ANGLES. ALL FASTENERS TO BE STAINLESS STEEL.



THIS DOCUMENT IS THE PROPERTY OF CONSTRUCTION SPECIALTIES, INC. AND CONTAINS CONFIDENTIAL PROPRIETARY INFORMATION THAT IS NOT TO BE DISCLOSED TO THIRD PARTIES AND IS NOT TO BE USED WITHOUT APPROVAL IN WRITING FROM CONSTRUCTION SPECIALTIES, INC.

Revisions				Drawn By	Job:	Sheet OF
No.	Date	By		Checked By	Cont'r.:	
				Date Approv	Arch't:	
				Scale	Agent:	CONSTRUCTION SPECIALTIES, INC. 48 MEDKER AVENUE, CRANFORD, NEW JERSEY
				Date		

