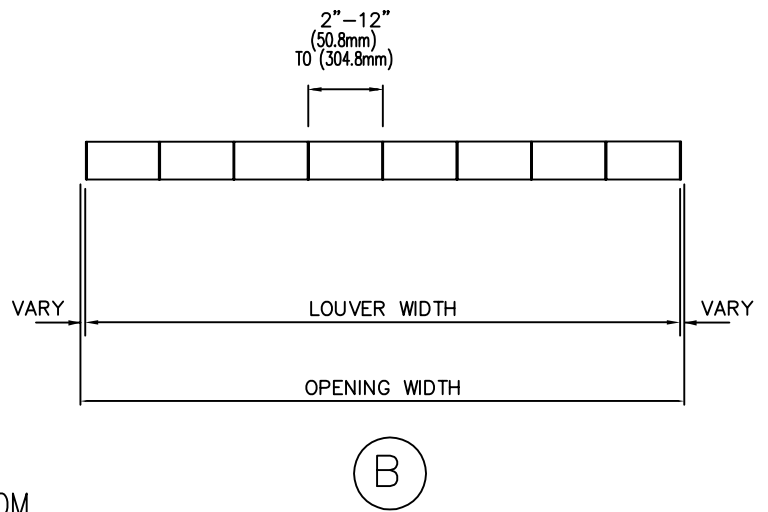
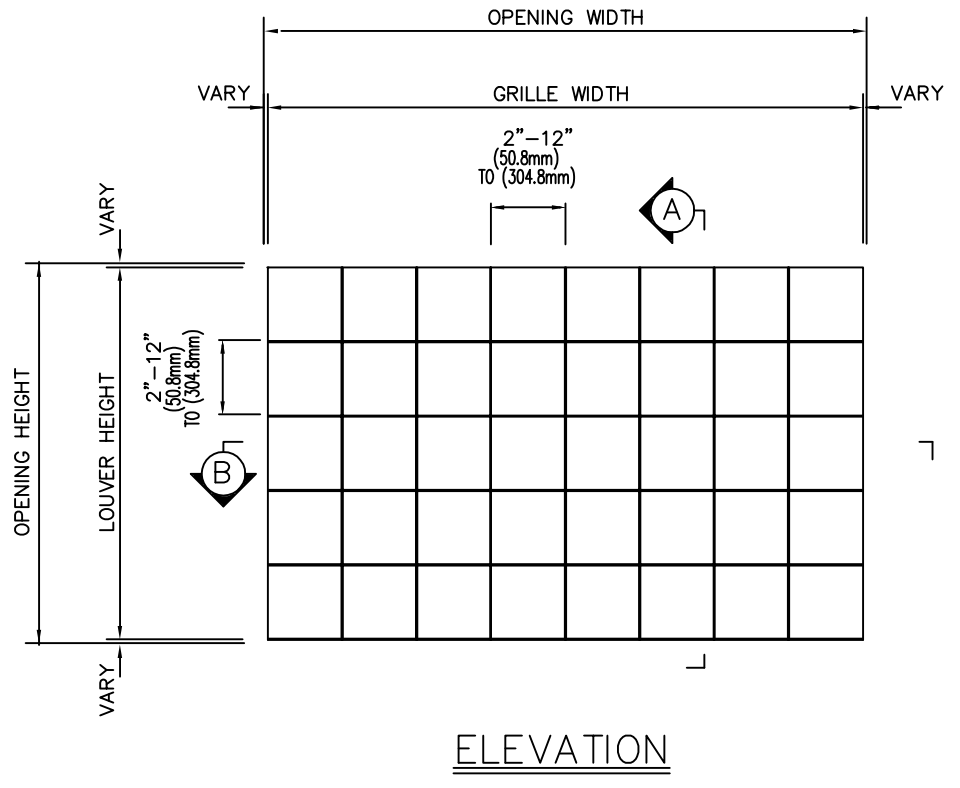
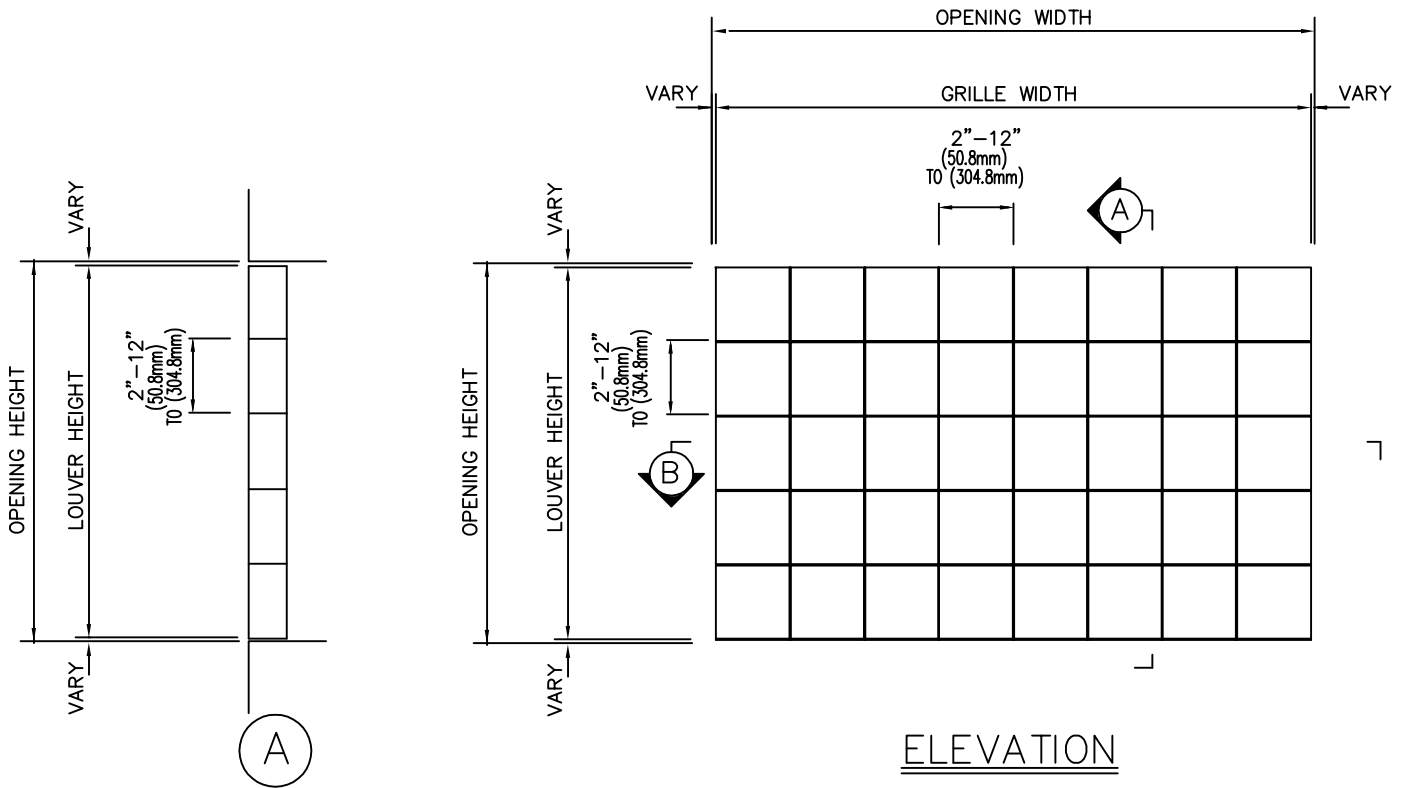



MODULAR



GENERAL NOTES

C/S MODULAR GRILLE TO BE FABRICATED FROM EXTRUDED ALUMINUM SECTIONS IN 5005 ALLOY. MATERIAL TO BE A NOMINAL .125" THICKNESS. ALL FASTENERS TO BE STAINLESS STEEL.

Revisions				Drawn By	Job:	
No.		Date	By	Checked By	Cont'r.:	
				Date Approv	Arch't.:	
				Scale	Agent:	
				Date	 CONSTRUCTION SPECIALTIES, INC. 49 MEDKER AVENUE, CRANFORD, NEW JERSEY	
					Sheet Of	Drawing No.