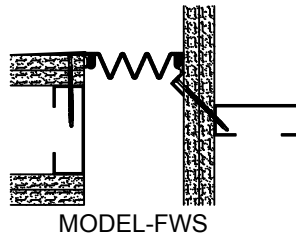
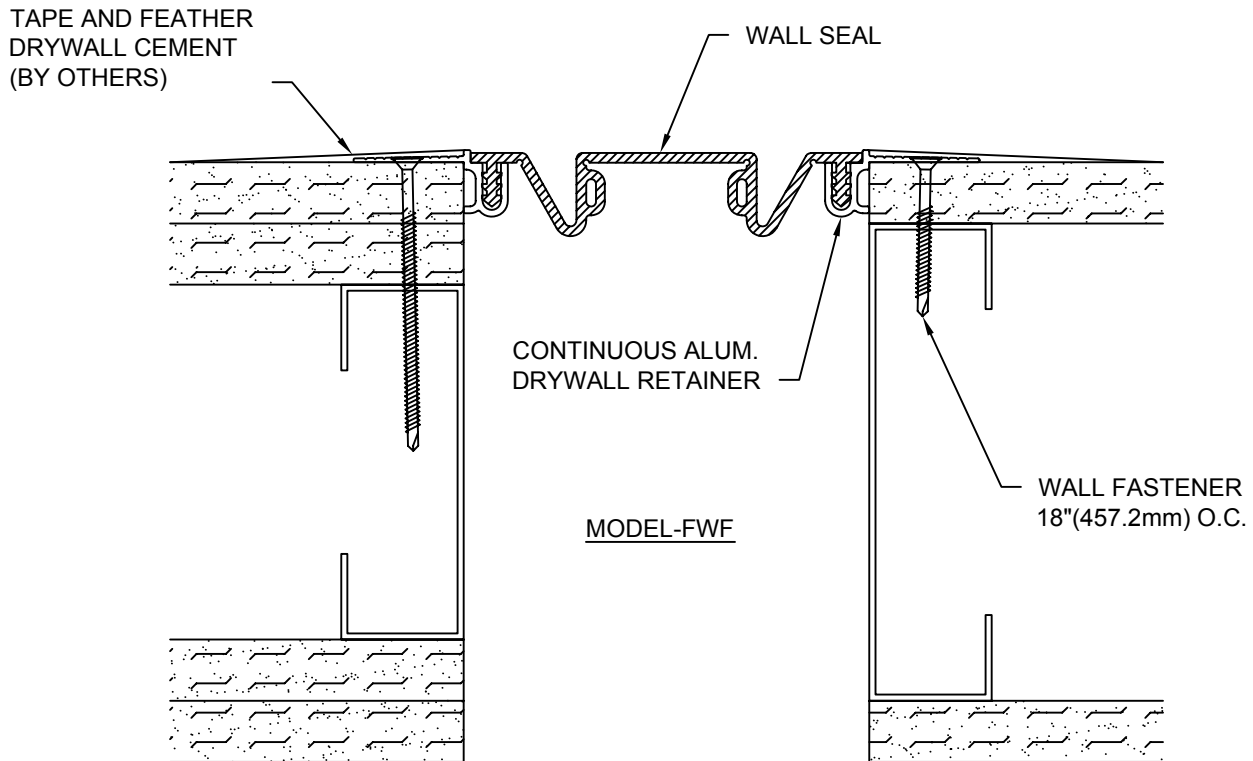


MODELS FWF/FWFC-300/500 & FWS/FWSC-200/400 INSTALLATION INSTRUCTIONS



IMPORTANT INFORMATION

Prior to the commencement of Installation, all materials MUST be inspected for Damage. Any damage must be reported to CONSTRUCTION SPECIALTIES, INC., as soon as possible, so that replacement materials may be furnished without delay.

All work must be completed as per Architect's Approved "Shop Drawings", and in accordance with these Installation Instructions. When installation is complete, all materials must be protected from damage until the Architect's FINAL INSPECTION.

All materials should be arranged in the order that they are to be installed. All hardware required for each portion of the work should be placed with the appropriate materials.

Please review all Approved Shop Drawings and this Document to familiarize yourself with all the details and components of this assembly.

IMPORTANT:
READ THROUGH ALL INSTRUCTIONS PRIOR TO STARTING INSTALLATION

4/25/06

CONSTRUCTION SPECIALTIES, INC.

P.O. BOX 380

MUNCY, PA 17756

PHONE: (570)546-5941 FAX: (570)546-8022

This document is the property of Construction Specialties, Inc. and contains CONFIDENTIAL PROPRIETARY INFORMATION that is not to be disclosed to third parties and is not to be used without approval in writing from Construction Specialties, Inc.

Notes:

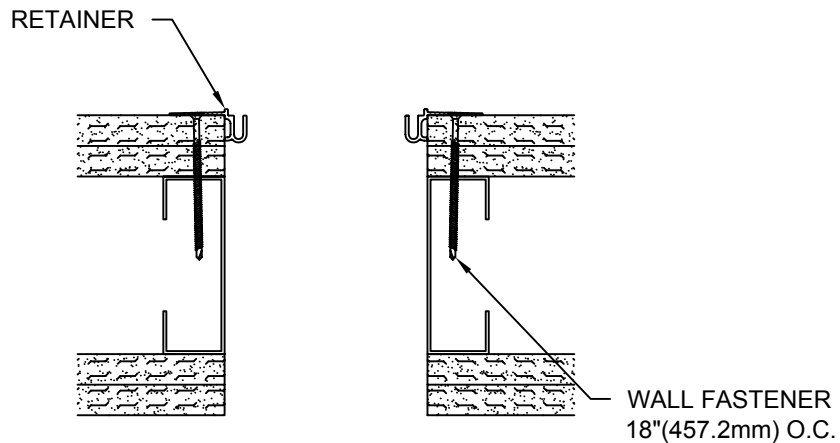
Before beginning installation, review the architectural drawings and approved Construction Specialties Inc. shop drawings to familiarize yourself with the joint cover models and locations.

Check all of the joint cover components to confirm that the correct joint cover model and size have been received. Also, check for materials that may have been damaged during shipping. Report all incorrect and/or damaged components to C/S at 800-233-8493.

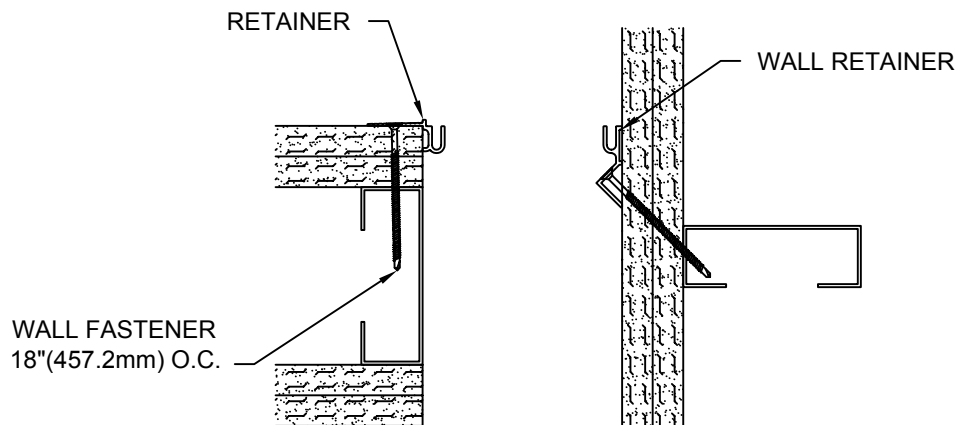
Read through all the steps of these instructions prior to beginning work.

STEP 1

RETAINER INSTALLATION



FLAT WALL CONDITION



CORNER WALL CONDITION

Note:

If a C/S Fire Barrier is to be installed in the joint, please review the Fire Barrier Installation Instructions supplied, and if required install the Fire Barrier **BEFORE** installation of C/S Seismic Expansion Joint aluminum frames.

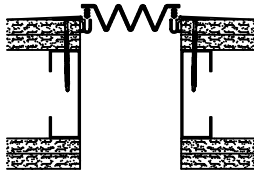
- 1.1) Measure and cut the Retainer to the appropriate length.
- 1.2) Position the Retainer on the edge of joint as shown.
- 1.3) Anchor the Retainer to the wall with the supplied fasteners.

Note: depending on the wall construction, it may be necessary to pre-drill holes for the supplied fasteners.

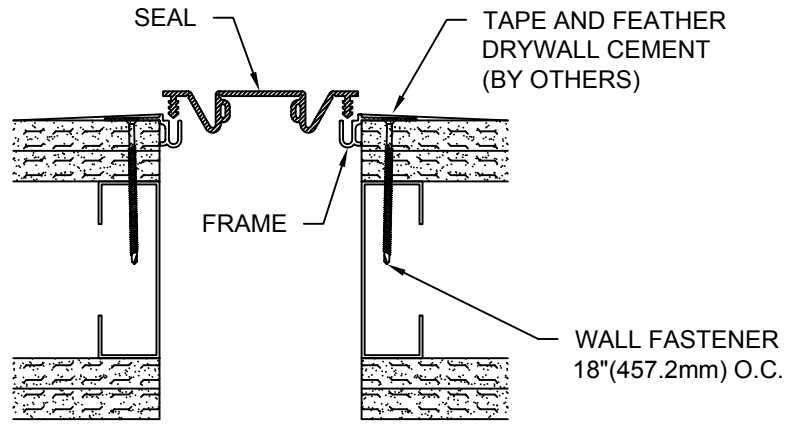
- 1.4) Repeat for installation of retainer for the other side of the expansion joint.

STEP 2

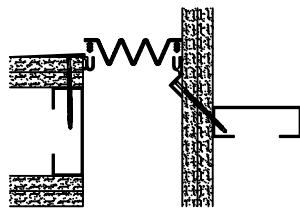
SEAL INSTALLATION



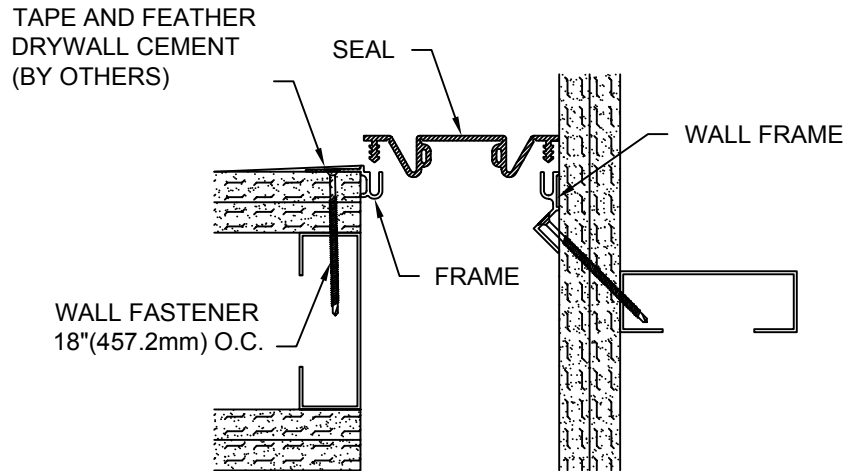
MODEL-FWS



FLAT WALL CONDITION
MODEL-FWF



MODEL-FWSC



CORNER WALL CONDITION
MODEL-FWFC

- 2.1) Cut a length of the Seal as needed for the run.
- 2.2) Starting at the top of the run, insert Seal into the slots of the Retainer.

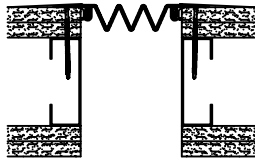
Note: in most cases hand pressure will be sufficient to seat the Seal in the Retainer. If necessary, you may use a rubber mallet and a wood block to gently drive the Seal flush with the surface of the Retainer.

Tip: If you spray the push in arrow with soapy water, the Seal slides in much easier.

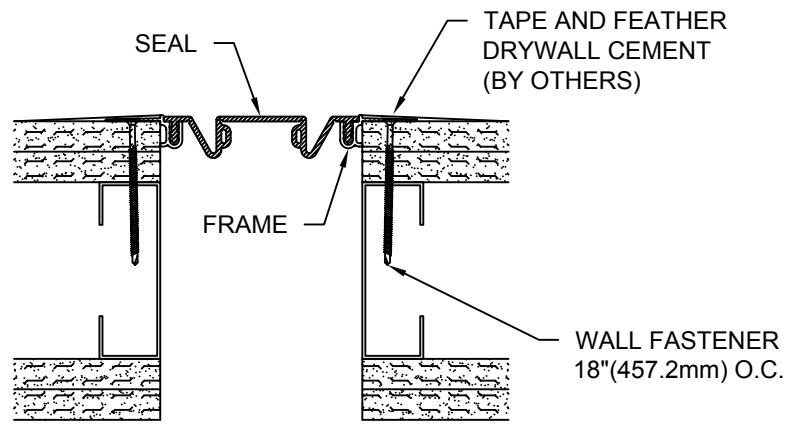
- 2.3) Tape the edge of the Retainer and feather drywall cement to provide a smooth transition to the drywall.

STEP 3

COMPLETE INSTALLATION

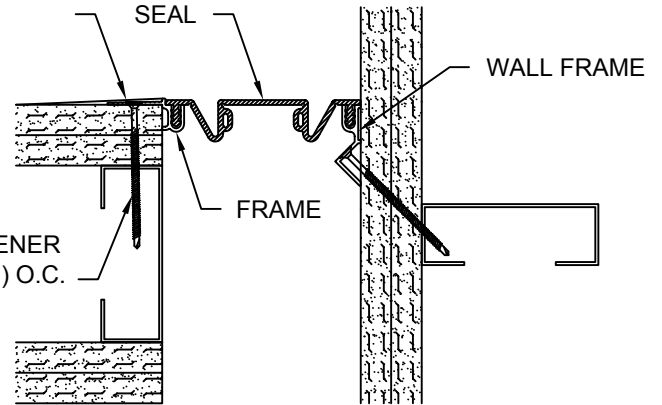


MODEL-FWS

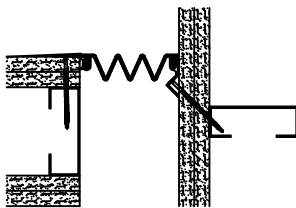


FLAT WALL CONDITION
MODEL-FWF

TAPE AND FEATHER
DRYWALL CEMENT
(BY OTHERS)



CORNER WALL CONDITION
MODEL-FWFC



MODEL-FWSC

- 3.1) When installation of the C/S Floor Expansion Joint Cover has been completed, remove all residue and foreign matter from the area and joint cover.
- 3.2) Clean the C/S Joint Cover and adjoining surfaces with proper cleaner.
- 3.3) Protect the Joint Cover until the Architect's final inspection.