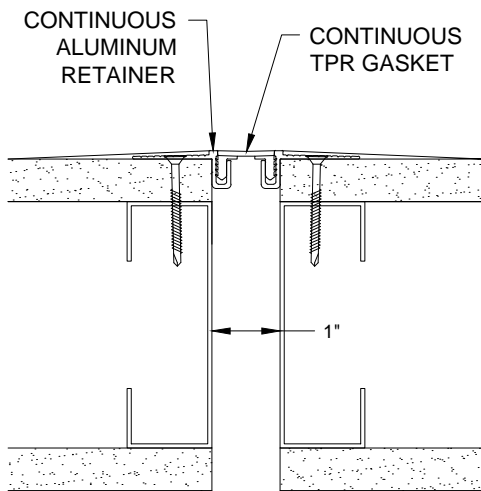
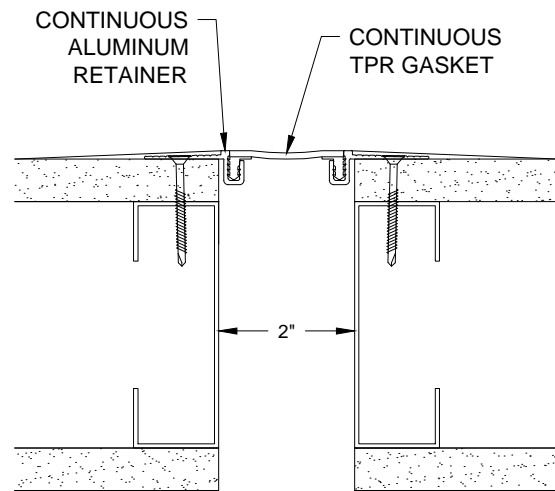


FWF/FWFC-100/200 FLUSH INTERIOR EXPANSION JOINT COVER INSTALLATION INSTRUCTIONS

12BC



FWF-100



FWF-200

IMPORTANT:

READ THROUGH ALL INSTRUCTIONS PRIOR TO STARTING INSTALLATION

Prior to the commencement of Installation all material MUST be inspected for Damage. Any damage must be reported to CONSTRUCTION SPECIALTIES, INC., as soon as possible, so that replacement materials may be furnished without delay.

All work must be completed as per Architects Approved "Shop Drawings", and in accordance with these Installation Instructions. When installation is complete, all materials must be protected from damage until the Architects FINAL INSPECTION.

All materials should be arranged in the order that they are to be installed. All hardware required for each portion of the work should be placed with the appropriate materials.

Please review all Approved Shop Drawings and this Document to familiarize yourself with all the details and components of this assembly.

1/30/12



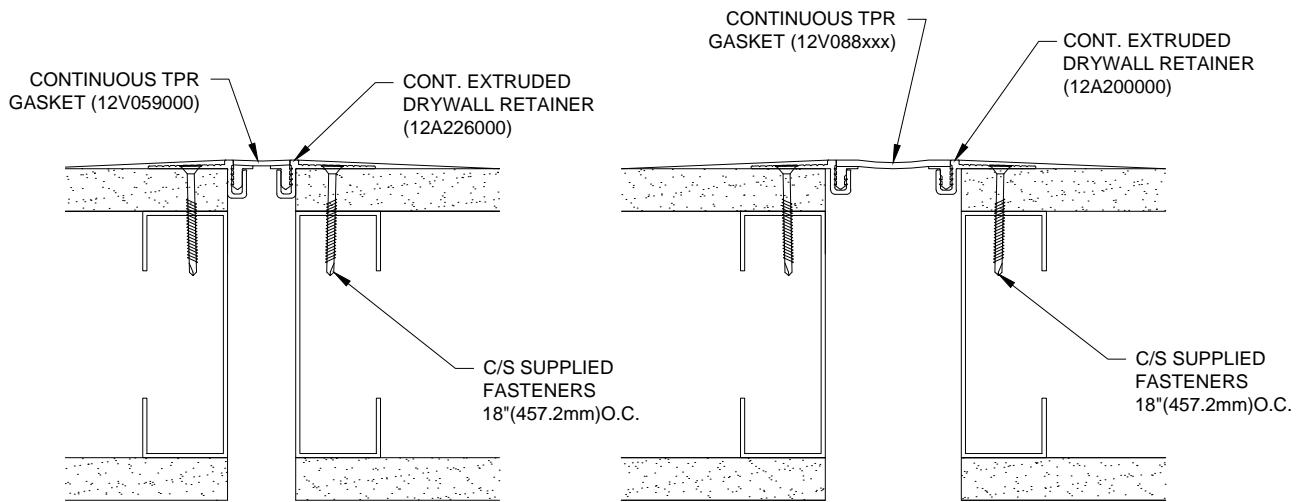
CONSTRUCTION SPECIALTIES, INC.

P.O. BOX 380
MUNCY, PA 17756
PHONE: (570)546-5941 FAX: (570)546-8022

This document is the property of Construction Specialties, Inc. and contains CONFIDENTIAL PROPRIETARY INFORMATION that is not to be disclosed to third parties and is not to be used without approval in writing from Construction Specialties, Inc.

STEP 1

INSTALLATION OF FWF-100/200 EXPANSION JOINT COVER

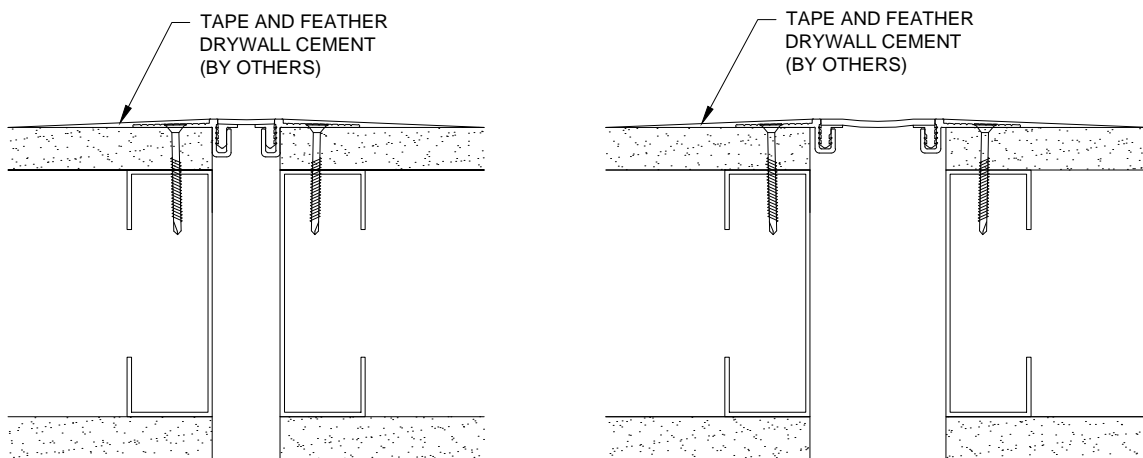


1.1)

WITH THE SUBSTRATE AND EXPANSION JOINT CONSTRUCTED PER THE ARCHITECTURAL DRAWINGS AND SPECIFICATIONS, ALIGN THE JOINT COVER ASSEMBLY OVER THE JOINT AND ANCHOR THE ALUMINUM RETAINERS WITH THE C/S SUPPLIED FASTENERS.

STEP 2

TAPE AND FEATHER EDGE OF EXPANSION JOINT COVER



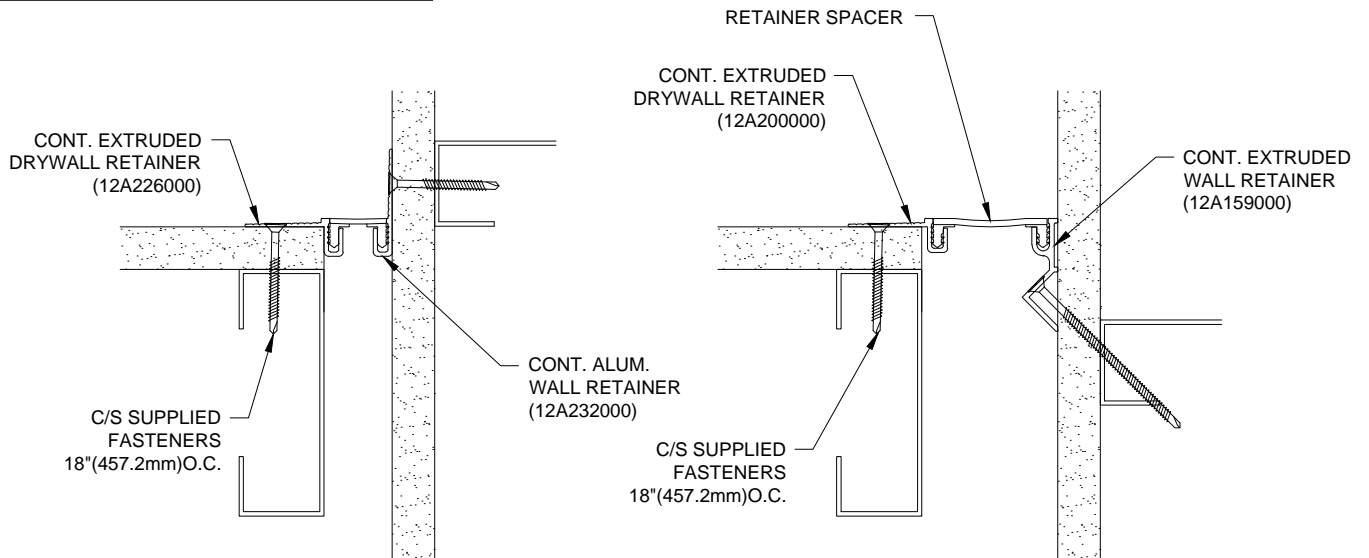
2.1)

TAPE THE EDGES OF THE ALUMINUM RETAINER AND FEATHER DRYWALL CEMENT TO PROVIDE A SMOOTH TRANSITION TO THE DRYWALL.

ANY DIRT MAY BE REMOVED BY USING AN INDUSTRIAL STRENGTH CLEANER. INSTALLATION OF THE EXPANSION JOINT COVER IS NOW COMPLETE.

STEP 1

INSTALLATION OF FWFC-100/200 EXPANSION JOINT COVER



1.1) WITH THE SUBSTRATE AND EXPANSION JOINT CONSTRUCTED PER THE ARCHITECTURAL DRAWINGS AND SPECIFICATIONS. MOUNT THE ALUMINUM RETAINERS WITH THE SUPPLIED C/S FASTENERS.

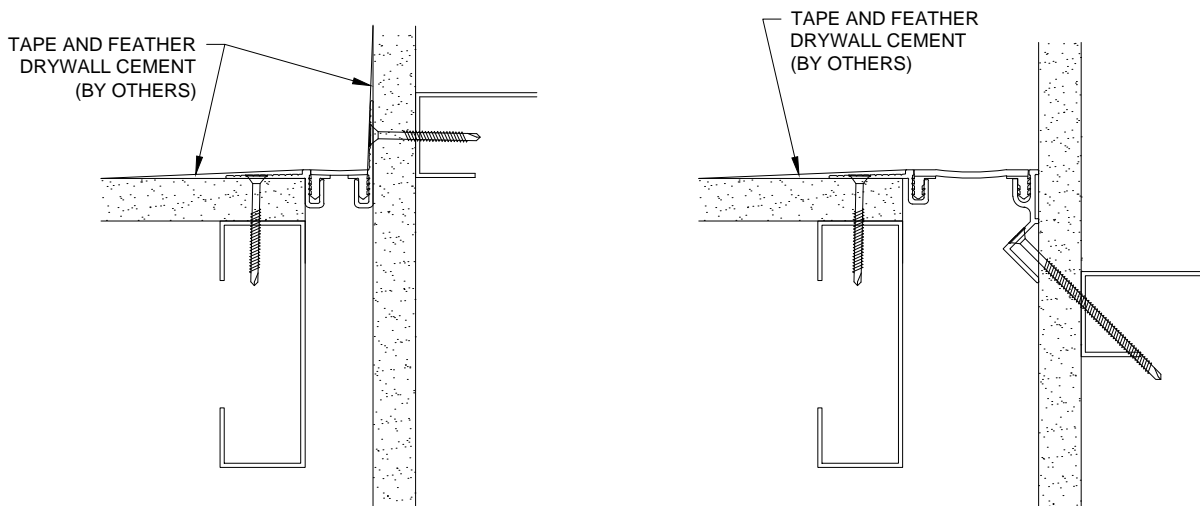
NOTE FWFC-200 ONLY: USING SEVERAL 1"-2" PIECES OF THE GASKET AS A SPACER, CENTER THE COVER IN THE JOINT AND MOUNT THE ALUMINUM RETAINERS WITH THE SUPPLIED DRYWALL SCREWS.

1.2) INSTALL THE GASKET INTO THE ALUMINUM RETAINERS. IN MOST CASES HAND PRESSURE WILL BE SUFFICIENT TO SEAT THE GASKET INTO THE RETAINER. IF NECESSARY, YOU MAY USE A RUBBER Mallet AND WOOD BLOCK TO GENTLY DRIVE THE GASKET FLUSH WITH THE SURFACE OF THE RETAINER.

TIP: IF YOU SPRAY THE PUSH IN ARROW WITH SOAPY WATER, THE GASKET SLIDES IN MUCH EASIER.

STEP 2

TAPE AND FEATHER EDGE OF EXPANSION JOINT COVER

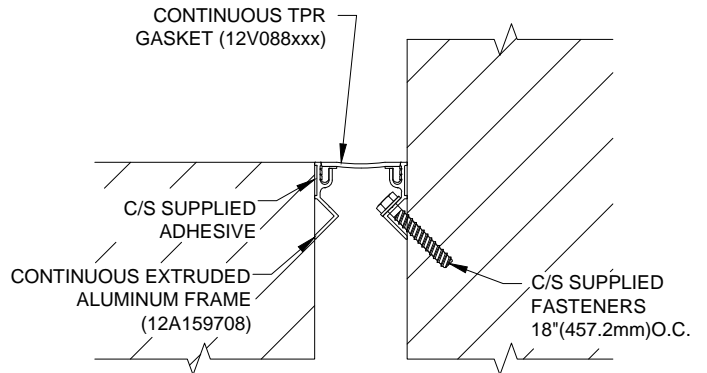
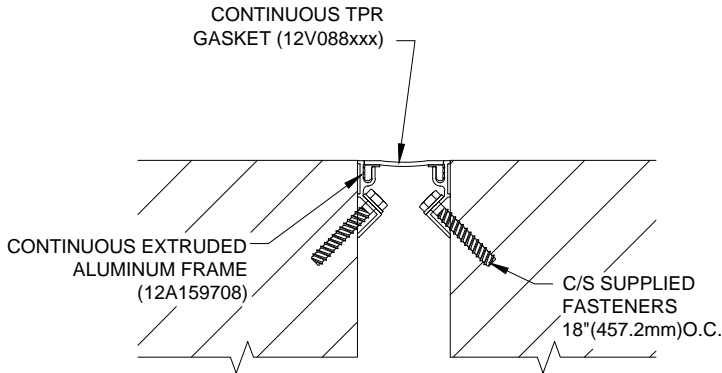
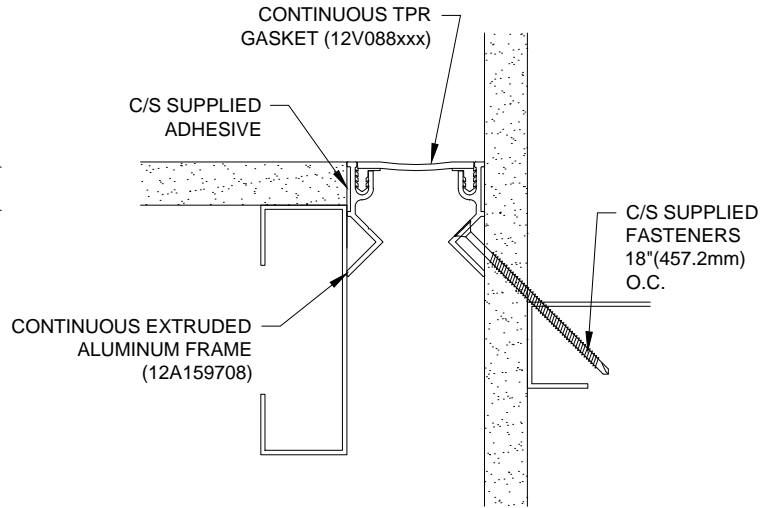
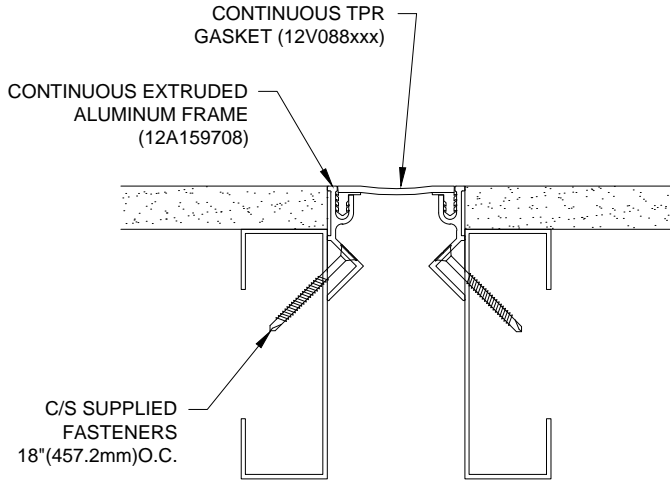


2.1) TAPE THE EDGES OF THE ALUMINUM RETAINER AND FEATHER DRYWALL CEMENT TO PROVIDE A SMOOTH TRANSITION TO THE DRYWALL.

ANY DIRT MAY BE REMOVED BY USING AN INDUSTRIAL STRENGTH CLEANER. INSTALLATION OF THE EXPANSION JOINT COVER IS NOW COMPLETE.

STEP 1

INSTALLATION OF FWF/FWFC-200M EXPANSION JOINT COVER



- 1.1) WITH THE SUBSTRATE AND EXPANSION JOINT CONSTRUCTED PER THE ARCHITECTURAL DRAWINGS AND SPECIFICATIONS, MOUNT THE ALUMINUM RETAINERS WITH THE C/S SUPPLIED FASTENERS AND/OR ADHESIVE.

NOTE FWFC-200M ONLY: USING SEVERAL 1"-2" PIECES OF THE GASKET AS A SPACER, CENTER THE COVER IN THE JOINT AND MOUNT THE ALUMINUM RETAINERS WITH THE SUPPLIED FASTENERS AND/OR ADHESIVE. DEPENDING ON THE WALL CONSTRUCTION, IT MAY BE NECESSARY TO PRE-DRILL HOLES FOR THE SUPPLIED FASTENERS. CORNER WALL CONDITIONS USING RECESSED WALL RETAINERS IN THE JOINT OPENING, CORNER WALL SIDE FASTENED WITH WALL FASTENER AND THE OTHER RETAINER FASTENED WITH THE SUPPLIED ADHESIVE.

- 1.2) INSTALL THE GASKET INTO THE ALUMINUM RETAINERS. IN MOST CASES HAND PRESSURE WILL BE SUFFICIENT TO SEAT THE GASKET INTO THE RETAINER. IF NECESSARY, YOU MAY USE A RUBBER Mallet AND WOOD BLOCKER TO GENTLY DRIVE THE SEAL FLUSH WITH THE SURFACE OF THE RETAINER.

TIP: IF YOU SPRAY THE PUSH IN ARROW WITH SOAPY WATER, THE SEAL SLIDES IN MUCH EASIER.

ANY DIRT MAY BE REMOVED BY USING AN INDUSTRIAL STRENGTH CLEANER. INSTALLATION OF THE EXPANSION JOINT COVER IS NOW COMPLETE.