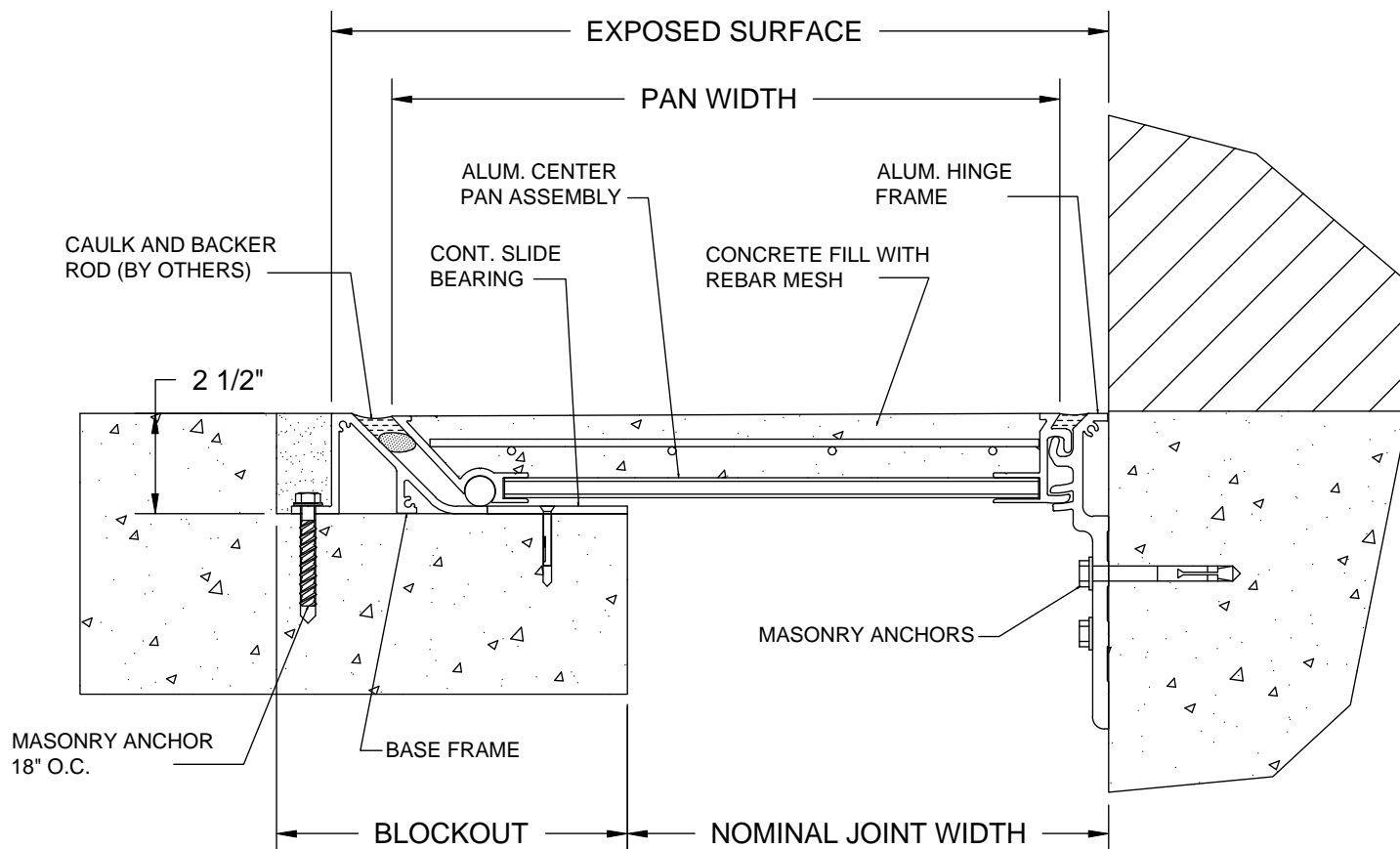


# MODELS SSRW-800 THRU SSRW-1600

## INSTALLATION INSTRUCTIONS

### MODELS SSRW-801 THRU SSRW-1001 SIMILAR



## IMPORTANT INFORMATION

Prior to the commencement of Installation, all materials MUST be inspected for Damage. Any damage must be reported to CONSTRUCTION SPECIALTIES, INC., as soon as possible, so that replacement materials may be furnished without delay.

All work must be completed as per Architect's Approved "Shop Drawings", and in accordance with these Installation Instructions. When installation is complete, all materials must be protected from damage until the Architect's FINAL INSPECTION.

### IMPORTANT:

**READ THROUGH ALL INSTRUCTIONS PRIOR TO STARTING INSTALLATION**

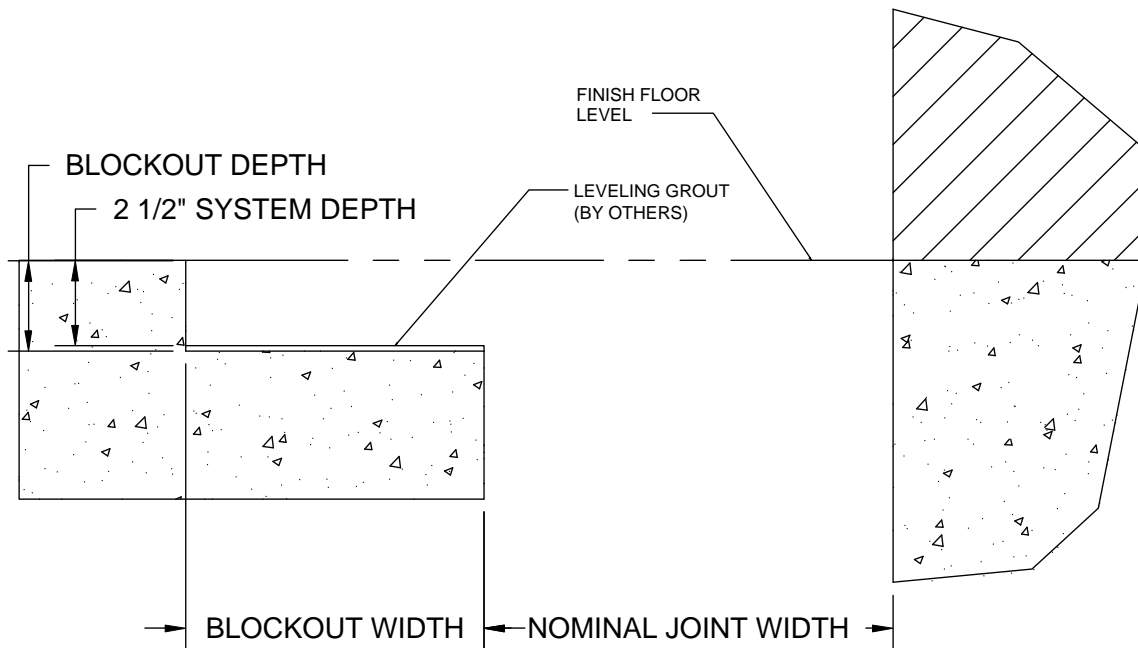
11/30/10

#### CONSTRUCTION SPECIALTIES, INC.

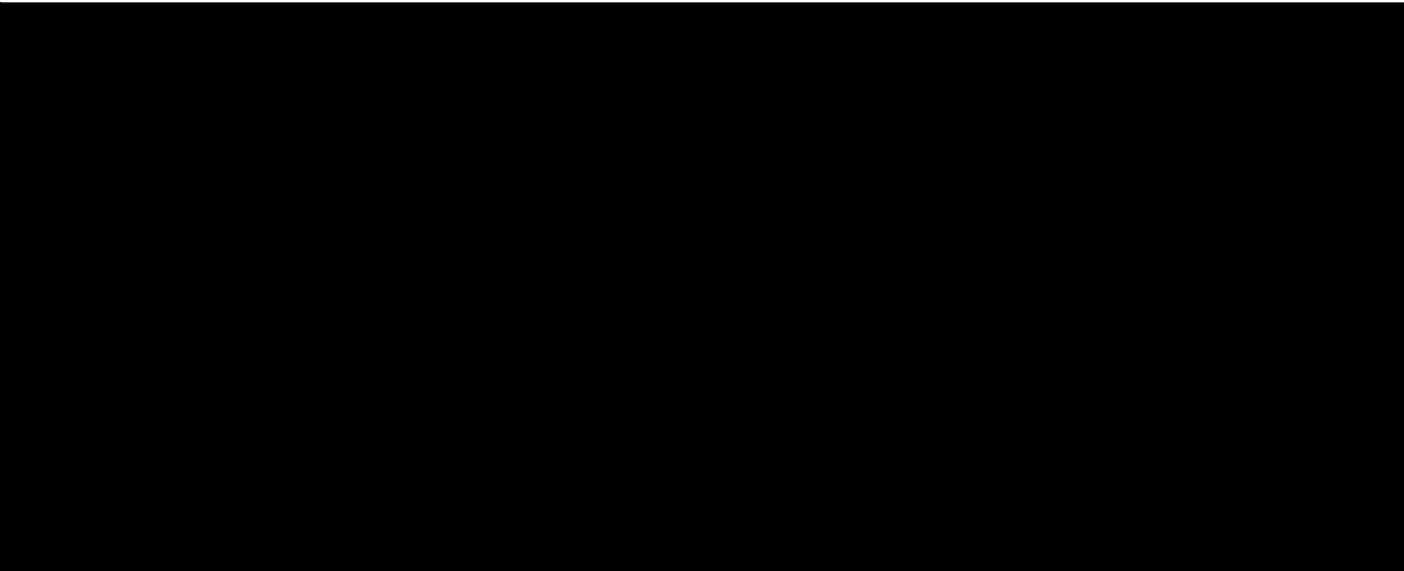
P.O. BOX 380  
MUNCY, PA 17756  
PHONE: (570)546-5941 FAX: (570)546-8022

This document is the property of Construction Specialties, Inc. and contains CONFIDENTIAL PROPRIETARY INFORMATION that is not to be disclosed to third parties and is not to be used without approval in writing from Conspec Systems, Inc.

# GENERAL NOTES

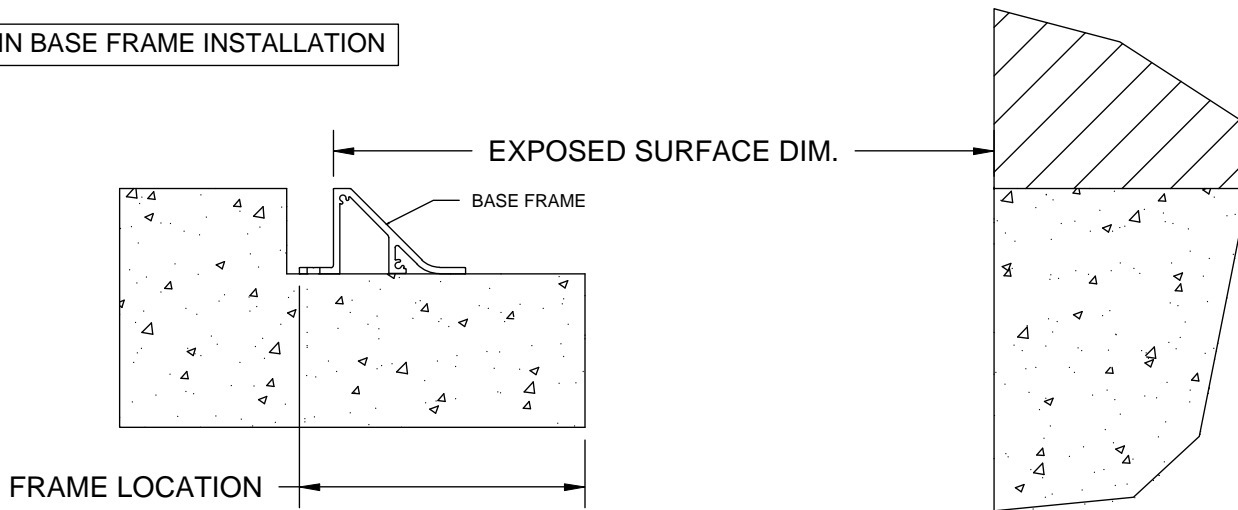


- 1.) Before beginning installation of these joint covers, review the layouts for the various runs of joint cover as detailed on the approved C/S shop drawings.
- 2.) The "SSRW" series joint covers must be securely mounted to structurally sound substrates. Repair all cracks or spawled areas of the concrete in the blockouts and in the deck adjacent to the blockout.
- 3.) The blockouts in which the covers are to be mounted must be flat, level and parallel. The blockout depth should be made deeper than the actual system depth and self-leveling grout should be used to set the final depth, and to provide a smooth, flat finish. **The base of the blockout must be flat (along the length of the joint) to within +/-1/16" and level (across the width of the blockout) to within +/-1/16".**
- 4.) The blockout width shown on the C/S shop drawings is a minimum width dimension. The blockout may be made wider to allow for greater installation tolerance.
- 5.) The surface of the blockouts must be clean and free from any loose dust, dirt, debris and oils that may affect the installation of the covers.
- 6.) It is possible that the expansion/seismic joint may have experienced some amount of movement at the time of installation. For proper installation of the "SSRW" covers, the joint width **must be within +/-1/4" of nominal**. If the joint width at the time of installation is not within this tolerance, please contact the factory as some adjustments to the key installation dimensions may be required. These instructions assume that the nominal joint is within tolerance.
- 7.) Coordinate installation of cover with installation of fire barrier systems and vapor barrier membrane when required.



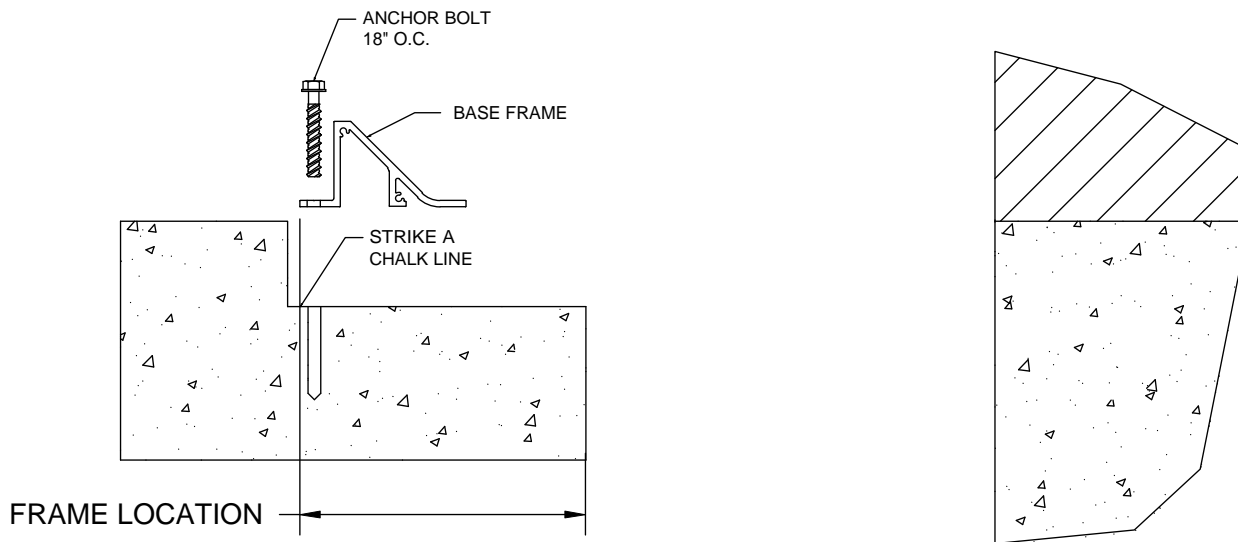
# STEP 1

## BEGIN BASE FRAME INSTALLATION



Note: Proper installation of the "SSRW" covers is dependent upon the proper location of the Base Frames. For the Pan assembly to fit and function properly, the Frames must be anchored parallel to the joint. They must be located at the proper distance for the edge of the joint and the exposed surface dimension must be maintained within a tolerance of  $\pm 1/8$ ".

The Frame Location and Exposed Surface and Joint Width dimensions are shown on the C/S shop drawings.



1.1) In the blockout, measure and mark the bottom of the blockout at the Frame Location Dimension. Strike a chalk line at this location, along the full length of the run.

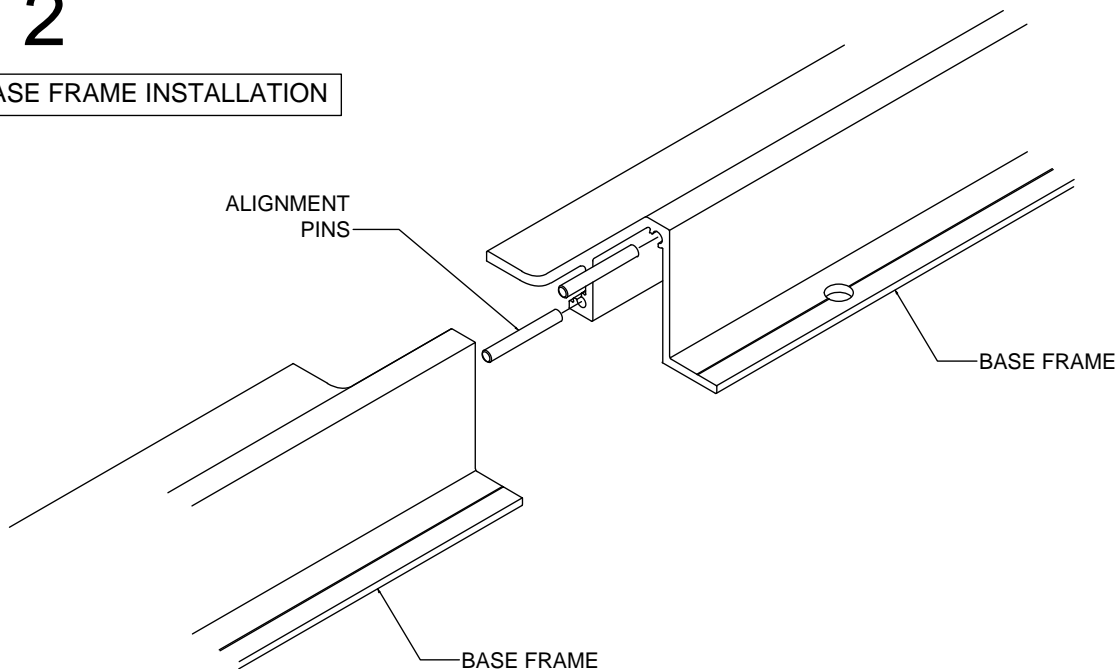
1.2) Beginning near the center of the run and working towards each end, position the first length of Frame along the Frame location line.

1.3) Using the Frame as a template, drill the holes for the C/S supplied anchor bolts. (Follow the drilling instructions provided by the anchor bolt manufacturer.)

1.4) Remove the Frame and clean the holes. Reposition the Frame and anchor the Frame into the blockout with the C/S supplied anchors. (Follow the anchor bolt manufacturer's installation instructions.)

# STEP 2

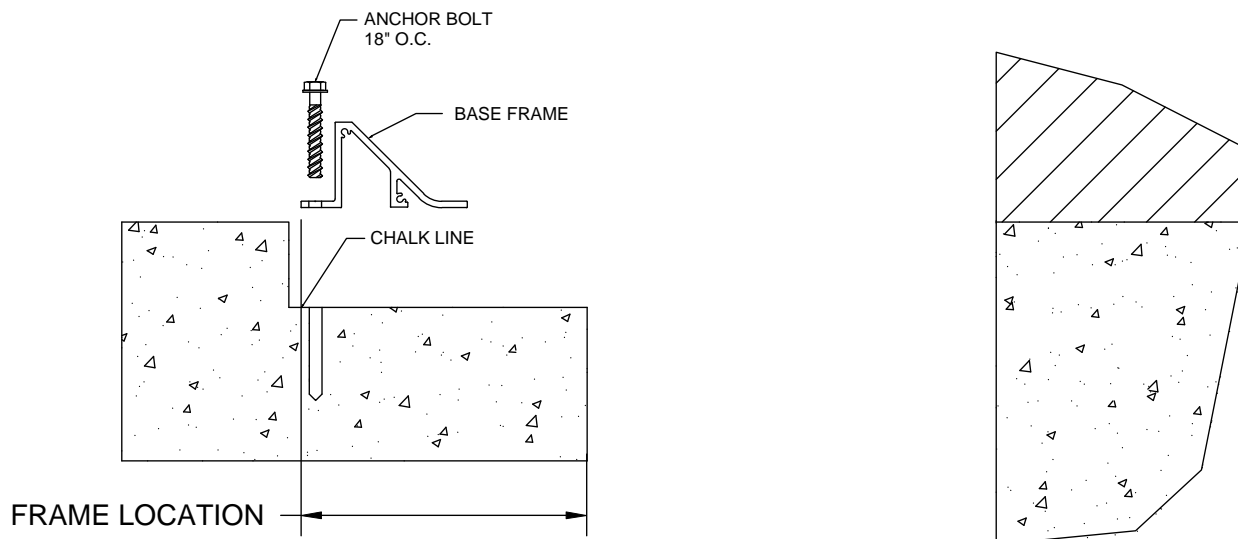
## CONTINUE BASE FRAME INSTALLATION



**Note:** To assist in maintaining the alignment of the exposed top edge of Base Frames alignment pins are to be placed in the Frame sections prior to installation.

2.1) Place one of the alignment pins into each of the extrusion bosses of the next length of Base Frame. Insert the pin approximately 1/2 of its length.

2.2) Peen one leg of the extrusion boss to hold the pin in position.



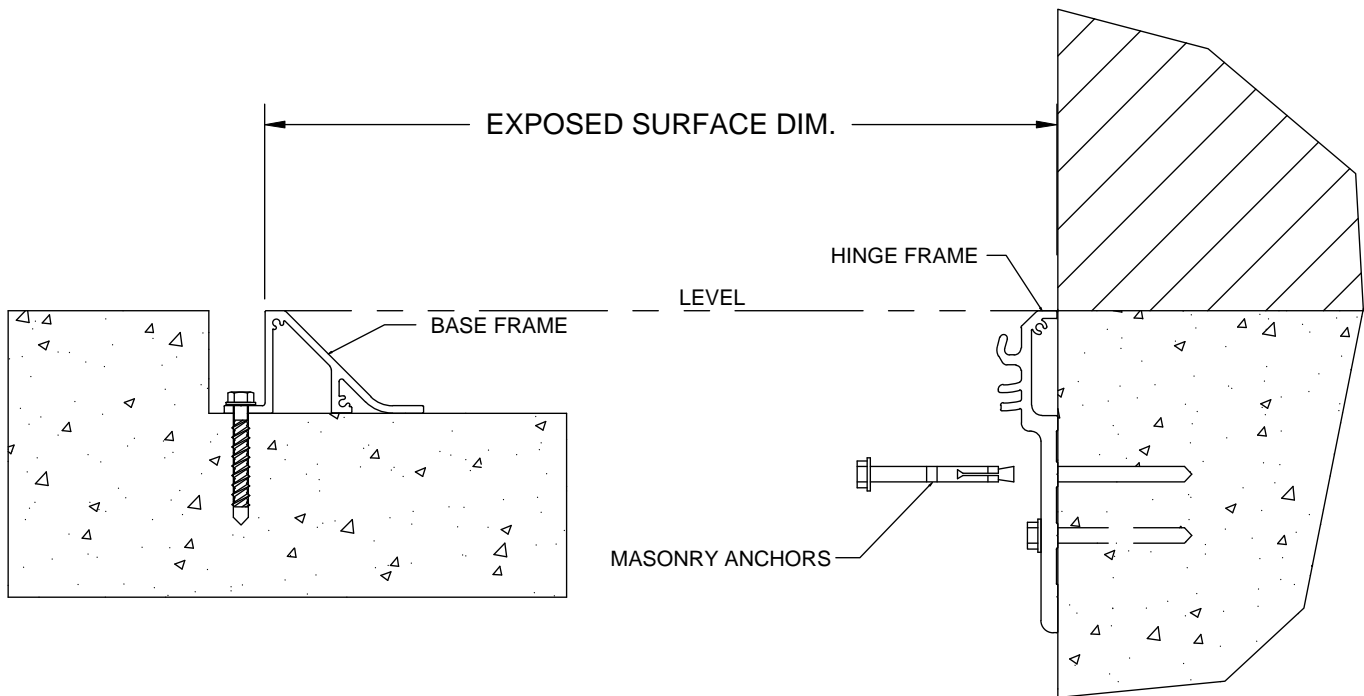
2.3) Position the adjacent lengths of Frame into the blockout and insert the alignment pins into the extrusion bosses of the previous Frame.

2.4) Following the instruction from Step 1, position, drill and anchor each additional length of Base Frame for this side of the joint.

**Note:** As you approach each end of the run, the last lengths of Frame may have to be cut to the appropriate length.

# STEP 3

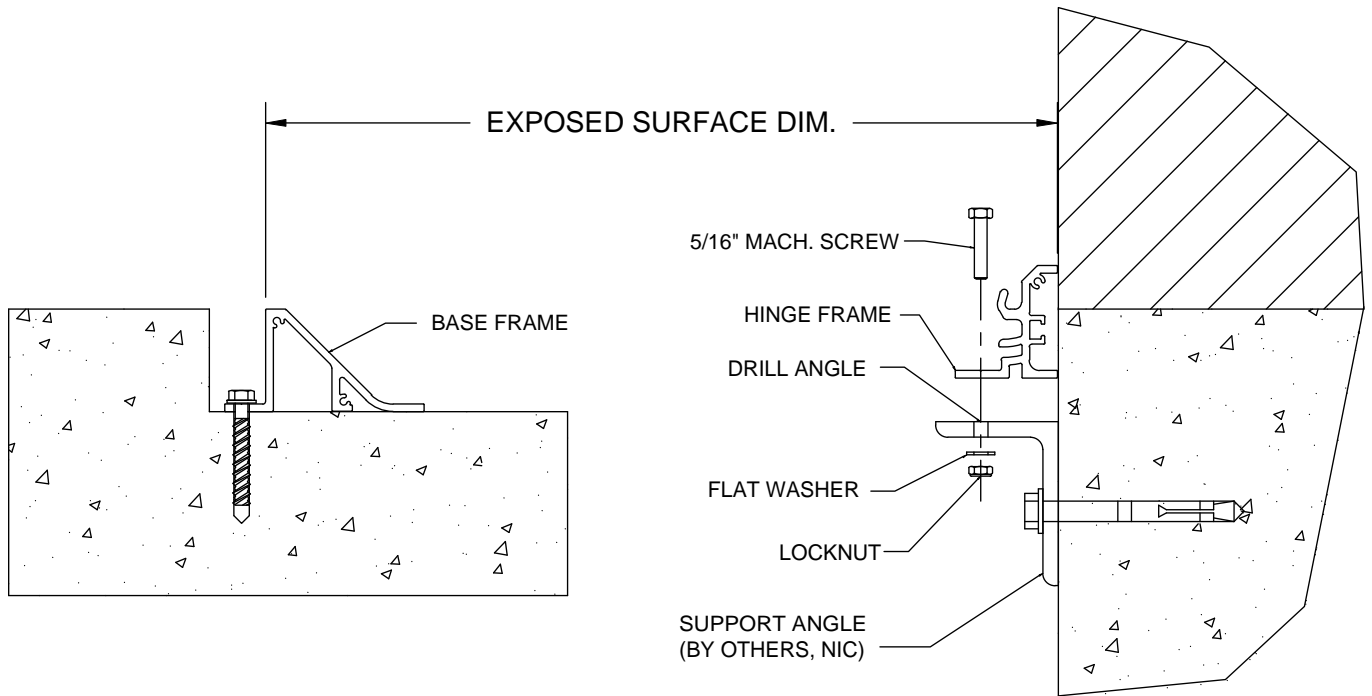
## INSTALL HINGE FRAME



- 3.1) Beginning again near the center of the run and working towards each end, position the first length of Hinge Frame against the face of the wall. Note: The top edge must be level with the top edge of the Base Frame and must be level and plumb along its length.
- 3.2) Using the Hinge Frame as a template, mark and drill the holes in the wall for the C/S supplied anchors as indicated on the C/S shop drawings.
- 3.3) Reposition the Hinge Frame and anchor to the wall.
- 3.4) Insert alignment pins into the next length of Frame and position drill and anchor as instructed above.
- 3.5) Repeat and install the remaining Frames for the entire length of the run.

# STEP 3A

## ALTERNATE HINGE FRAME INSTALLATION

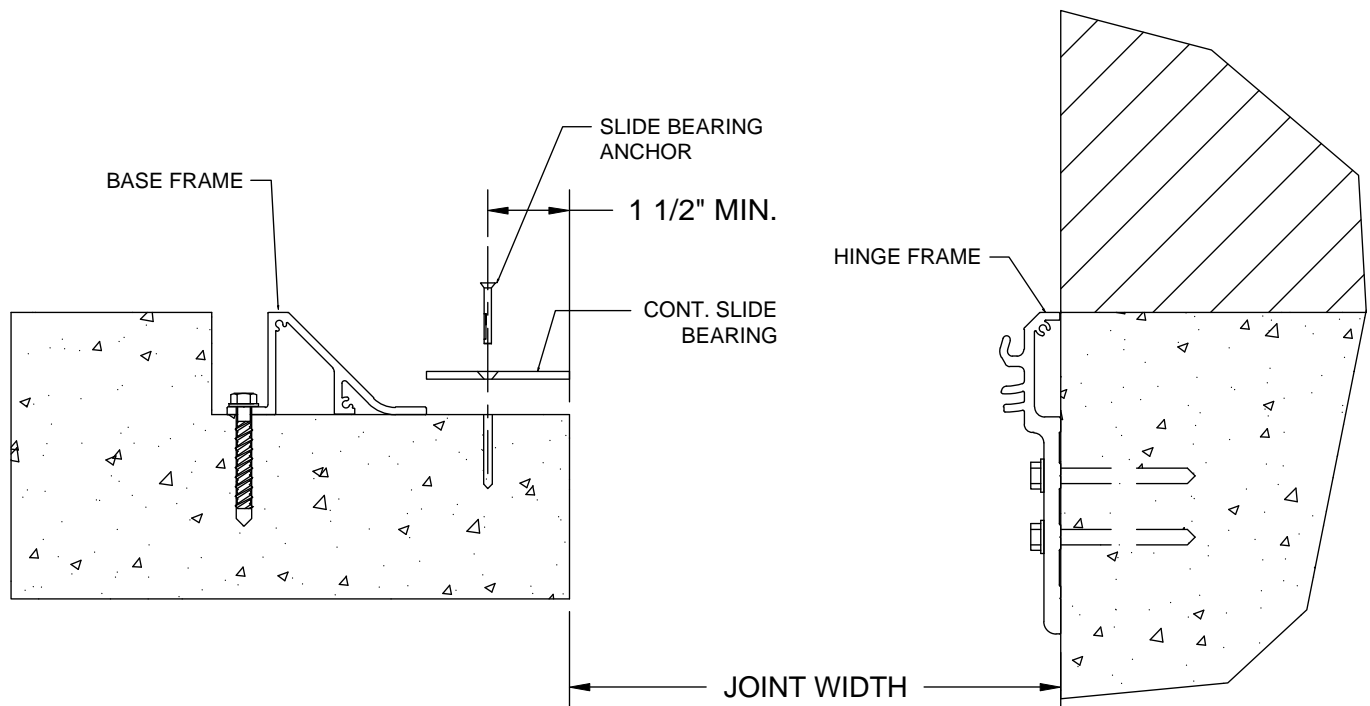


### ALTERNATE INSTALLATION

- 3.1) Beginning again near the center of the run and working towards each end, position the first length of Hinge Frame on the support angle.
- 3.2) Using the Frame as a template, drill the holes in the support angle for the C/S supplied hardware.
- 3.3) Anchor the Frame to the support angle blockout with the C/S supplied hardware.
- 3.4) Insert alignment pins into the next length of Frame and position it onto the support angle.
- 3.5) Drill the support angle and anchor the Hinge Frame according to the previous instructions.
- 3.6) Repeat and install the remaining Frames for the entire length of the run.

# STEP 4

## INSTALLING SLIDE BEARINGS

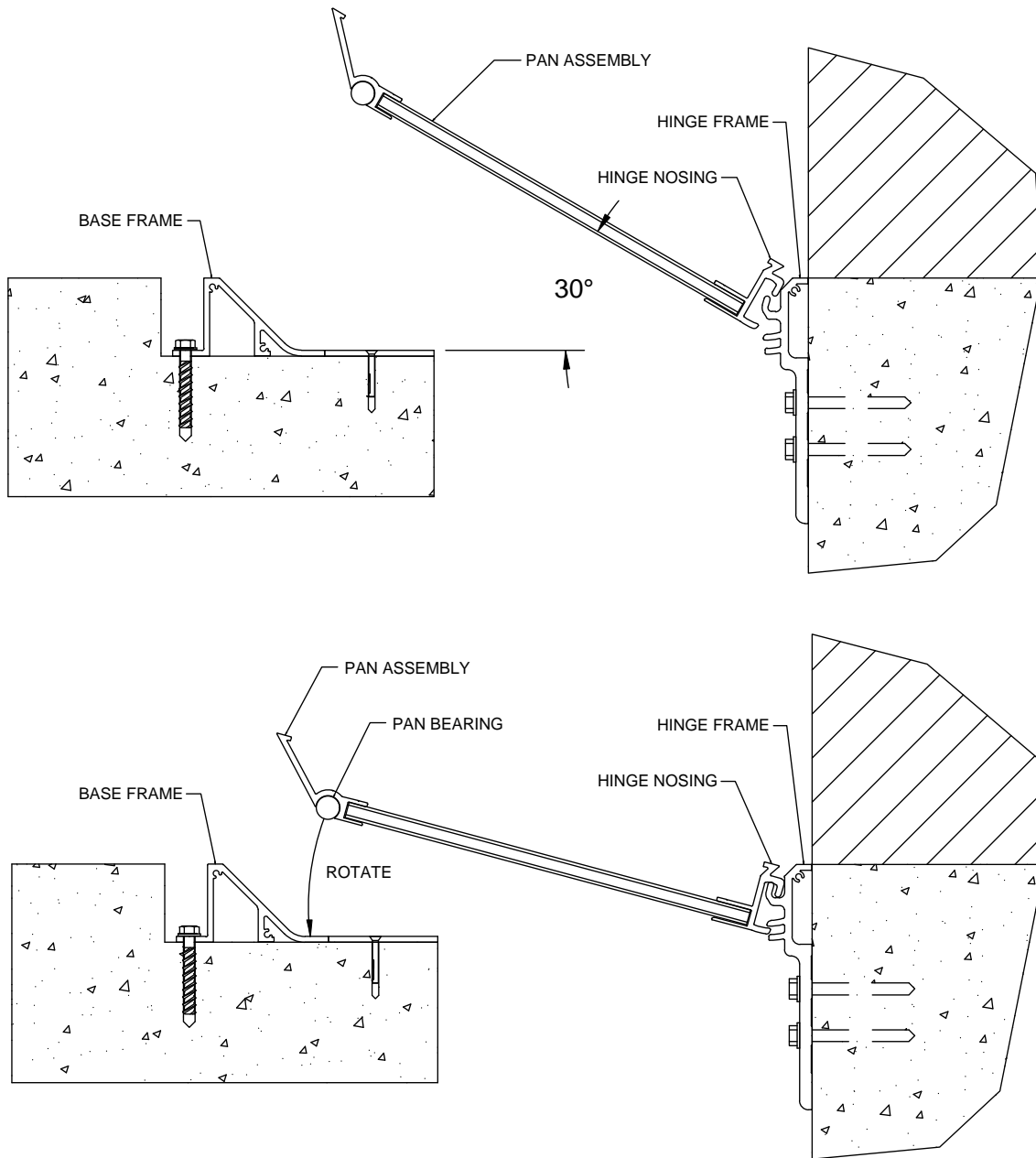


**Note:** The continuous slide bearings are used to provide a sliding surface for the Pan during seismic movement and prevent the pan bearings from dropping below the level of the Base Frame and causing damage.

- 4.1) Position the first length of continuous slide bearing so that it butts against the lower leg of the Base Frame.
- 4.2) Using the slide bearing as a template, mark the hole locations for the bearing anchors, then remove the slide bearing.
- 4.3) Drill the holes for the appropriate C/S supplied anchors. (Drill the holes per the anchor manufacture's instructions.)
- 4.4) Clean the holes and the surface of the blockout and place the slide bearing back into position.
- 4.5) Anchor the bearing to the slab with the proper anchors.
- 4.5) Repeat for the remaining slide bearing lengths that are required for the full run.

# STEP 5

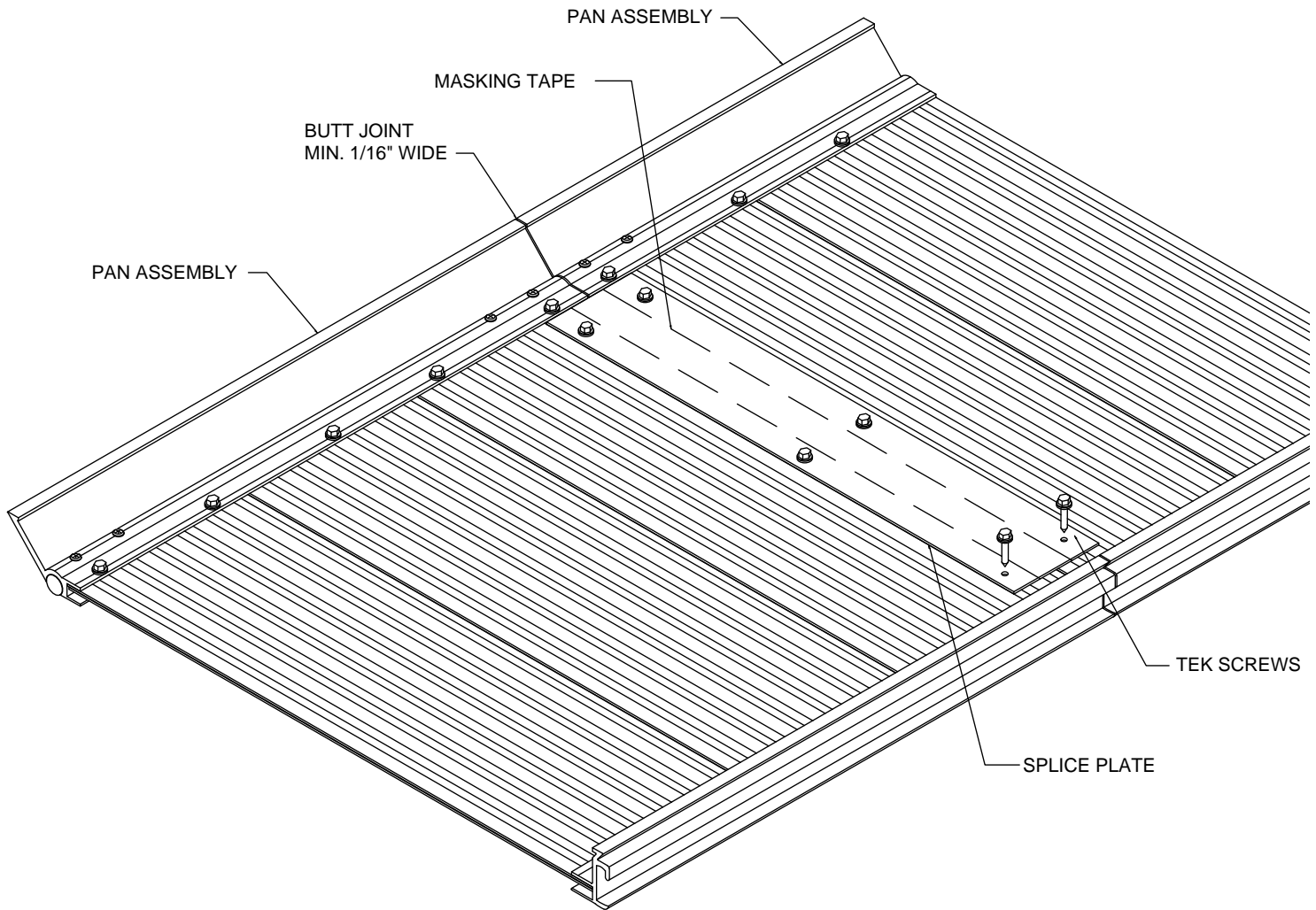
## CENTER PAN INSTALLATION



- 5.1) Beginning near the center of the run, hold the first Pan Assembly with the hinge nosing towards the Hinge Frame.
- 5.2) While the Pan at approximately a 30° angle position the leg of the hinge nosing against the upper portion of the Hinge Frame slot.
- 5.3) Begin to rotate the Pan downward and engage the hinge nosing into the Hinge Frame.
- 5.4) Continue to rotate the Pan down until the pan bearing is resting on the Base Frame.

# STEP 6

## PAN SPLICING



### DETAIL DESCRIPTION

**Note:** Center Pan Assemblies are supplied in typical 10'-0" lengths. Each Pan is to be field spliced to the adjacent Pans to maintain alignment. A minimum 1/16" gap must be maintained between Pan Assemblies to allow for thermal expansion.

6.1) Place the next Pan Assembly onto the Frames as instructed in Step 5.

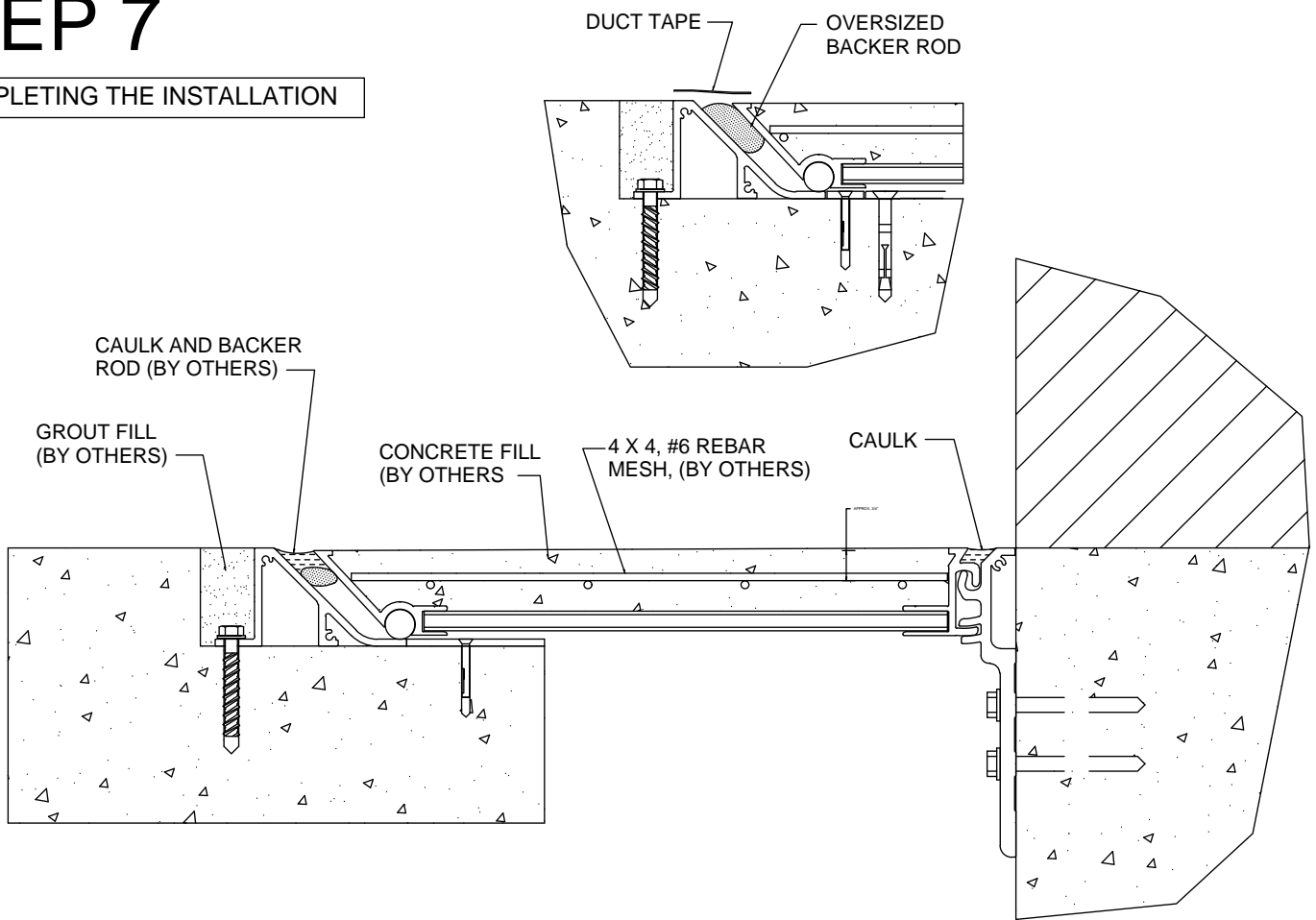
6.2) Slide the Pan along the Frames until the ends of the Pans butt together. Separate slightly to maintain a minimum 1/16" gap.

6.3) Place a strip of masking tape or duct tape on top of the Pans, over the butt joint, for the full width of the Pan.

6.4) Center one of the C/S supplied splice plates over the butt joint and attach to the pan using the supplied self-drilling tek screws. **Note:** Maintain the minimum 1/16" gap at the butt joint.

# STEP 7

## COMPLETING THE INSTALLATION



**Note:** With the joint cover assemblies installed for the full length of the run, the following steps will complete the installation. The steps do not necessarily have to be completed in the order shown.

7.1) Place the C/S supplied oversized backer rod into the slot between the Base Frame and Pan, for the full length of the run. The backer rod should be positioned just below the exposed edges of the Base Frame and Pan. **Note:** The backer rod is used to prevent dirt and debris from gathering in the slot between the Frame and Pan that could hinder movement or the resting position of the Pan.

7.2) Place duct tape along the top surface of both the Base Frame and Pan Frame so that it spans over the oversized backer rod. Also place tape over the space between the Hinge Frame and Pan. **Note:** The tape will protect the exposed surfaces while the grout and concrete fill are placed.

7.3) Fill the remaining blockout area, above the Base Frame anchors, with a quality non-shrink grout (by others).

7.4) In the Pan, place 4" x 4", #6 rebar mesh (by others) along the full length of the run. The rebar mesh should span nearly the full width of the Pan, and should be positioned approximately 3/4" below the top surface of the Pan.

**IMPORTANT Note:** Select the proper concrete mix: Discuss with your local Concrete supplier Engineer to recommend a concrete for this special application in effort to prevent excessive shrinking, curling, and fracturing of the concrete from occurring. Recommendations include: Low water to cement ratio, #8 coarse aggregate, and/or a 60/40 cement to ash combination, greater full cure time (60 day minimum recommended), and a recommended shrinkage admixture. If concrete is being applied outside, canopys or burlap should be used to minimize excessive differential curing from occurring. Concrete should not be installed if there is the possibilities the temperatures could drop below recommended curing temperatures during the curing cycle.

7.5) Fill the Pan with the selected concrete (concrete by others) Float the concrete level with the exposed edges of the Pan. Smooth and finish as required. Apply misters for moist curing (see Important Note:)

**IMPORTANT Note:** Measures must be taken to prevent excess shrinking and curling from occurring. Construction Specialties recommends the installer moist cure the concrete for a minimum of 12 days. During the final 5 days reduce duration of moist curing incrementally. These efforts will aid in the reduction of differential curing from occurring causing warping of the concrete and possibly damaging the aluminum pans.

# STEP 7 Continued

## COMPLETING THE INSTALLATION

Included below are links to articles and documentation for additional resources to aid in the reduction of shrinking and warping caused by improperly specified or curing of the concrete.

[http://www.cement.org/tech/cct\\_floors\\_shrinkage.asp](http://www.cement.org/tech/cct_floors_shrinkage.asp)

[http://irc.nrc-cnrc.gc.ca/pubs/ctus/44\\_e.html](http://irc.nrc-cnrc.gc.ca/pubs/ctus/44_e.html)

**IMPORTANT Note:**After all misting and troweling has been completed, apply the recommended water based concrete curing compound (not a cure and seal) (by others) to the entire surface of the concrete.

7.6) When the concrete has set or after any other floor finish work is complete, remove the duct tape from along the exposed surface of the Pan and Base Frames. Before removing the oversized backer rod, vacuum off the top surface to remove all loose grout, concrete, dirt and debris that might fall into the slot as the backer rods are removed. Then remove the backer rods.

7.7) Place new backer rods (by others) and caulking (by others) along the full length of the slots between the Pan and Base Frames. The caulk should be smooth and level with the exposed surfaces of the Frame and Pan.Note: To provide the proper thermal expansion and compression capability, select a caulking that will provide +/-50% movement capability per nominal width. We recommend using **Sika®2C SL** where available. The caulking should be applied per the manufactures recommendations and width to depth ratio.

THE INSTALLATION SHOULD NOW BE COMPLETE. PROTECT THE INSTALLATION UNTIL FINAL ARCHITECTURAL INSPECTION.

