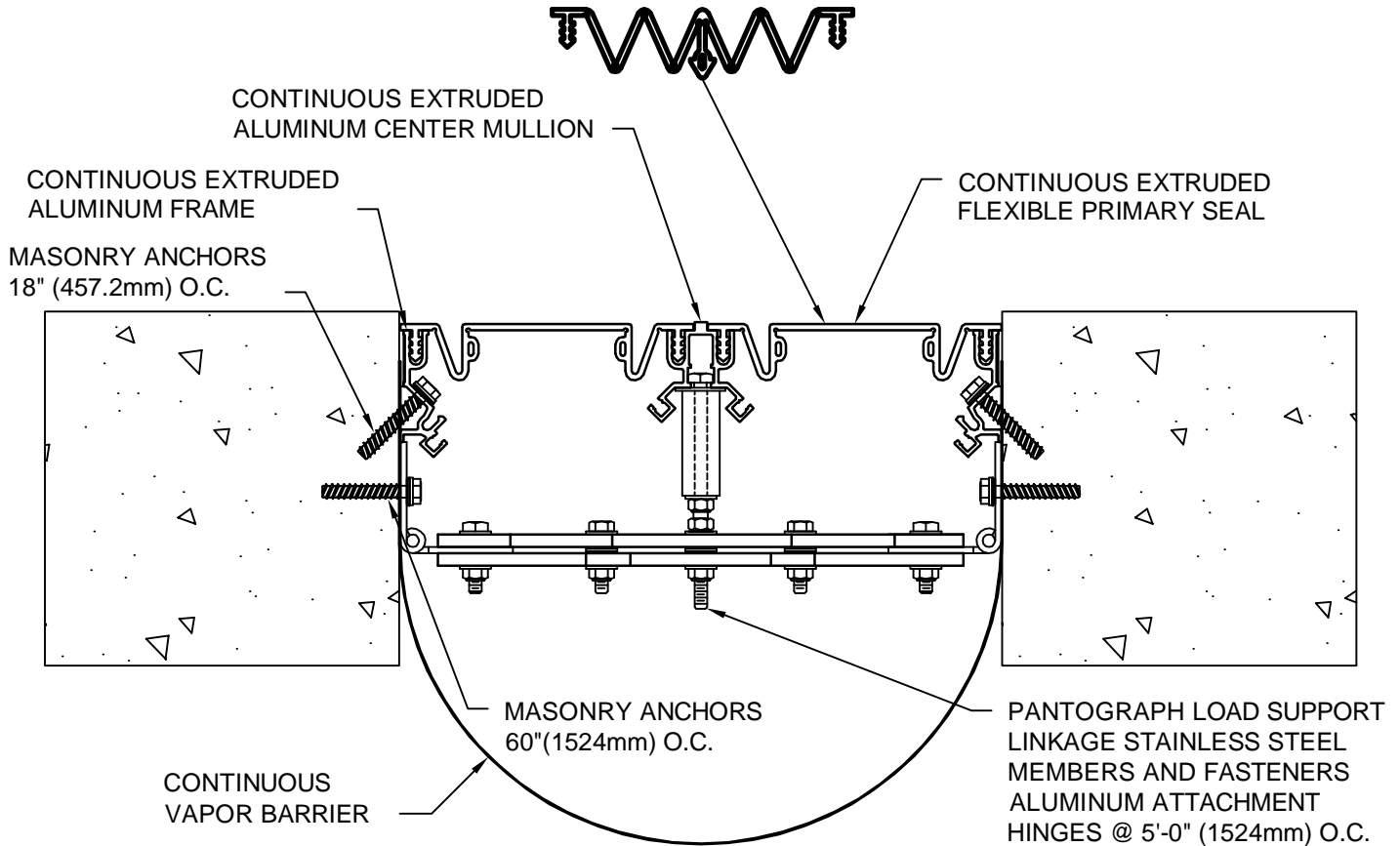


# MODEL SF/SC-1200 THRU 2400 INSTALLATION INSTRUCTIONS

CONTINUOUS EXTRUDED FLEXIBLE  
PRIMARY SEAL USED FOR MODEL SC



## IMPORTANT INFORMATION

Prior to the commencement of Installation, all materials **MUST** be inspected for Damage. Any damage must be reported to **CONSTRUCTION SPECIALTIES, INC.**, as soon as possible, so that replacement materials may be furnished without delay.

All work must be completed as per Architect's Approved "Shop Drawings", and in accordance with these Installation Instructions. When installation is complete, all materials must be protected from damage until the Architect's **FINAL INSPECTION**.

All materials should be arranged in the order that they are to be installed. All hardware required for each portion of the work should be placed with the appropriate materials.

Please review all Approved Shop Drawings and this Document to familiarize yourself with all the details and components of this assembly.

**IMPORTANT:**  
**READ THROUGH ALL INSTRUCTIONS PRIOR TO STARTING INSTALLATION**

€5/€9/11



**Construction Specialties™**

6696 Route 405 Highway, Muncy PA 17756  
(800) 233-8493 Fax (570) 546-5169 www.c-sgroup.com

This document is the property of Construction Specialties, Inc. and contains **CONFIDENTIAL PROPRIETARY INFORMATION** that is not to be disclosed to third parties and is not to be used without approval in writing from Construction Specialties, Inc.

Notes:

Before beginning installation, review the architectural drawings and approved Construction Specialties Inc. shop drawings to familiarize yourself with the joint cover models and locations.

Check all of the joint cover components to confirm that the correct joint cover model and size have been received. Also, check for materials that may have been damaged during shipping. Report all incorrect and/or damaged components to C/S at 800-233-8493.

Read through all the steps of these instructions prior to beginning work.

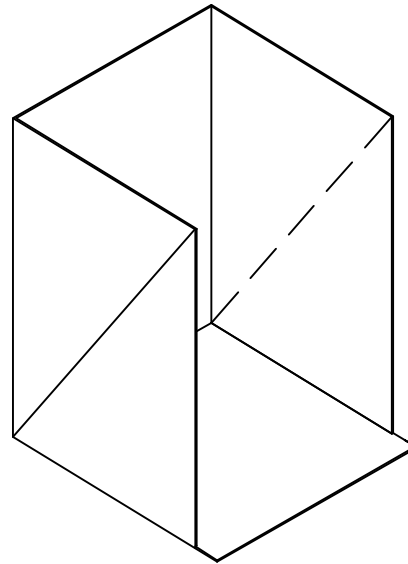
# STEP 1

## BASE CLOSURE INSTALLATION

Base Closures are installed at the bottom of a run of Exterior Wall Cover or a transition between joint widths in a single run of exterior expansion joint cover (See approved C/S Shop Drawings for locations). The size of the base closure is determined by the joint width.

IMPORTANT NOTE:

Actual field conditions may differ from shown.



Step 1:

- 1.1 Locate the center in the width of the sheet. Fold and crease. (See diagram 1:1)
- 1.2 Fold the length of the sheet into 3 equal sections. (Fold and crease - See diagram 1:2)
- 1.3 Create a 1" center tab by trimming off 1" from each end section. (See diagram 1:3 to create diagram 1:4)
- 1.4 Fold width of sheet in half and fold the top outside corners down. (Fold and crease - see diagram 1:5 & 1:6)
- 1.5 Open sheet (See diagram 1:7) Fold outside center points of A & B together and C & D together, creating two flaps. (See diagram 1:8)
- 1.6 Remove the paper backing from one side of joint tape. Apply strips of joint tape along A to B line, along C to D line and along the outside edge of each. (See diagram 1:9) For joint sizes 6" or larger apply 2 strips.
- 1.7 Remove the paper backing from the other side of the joint tape and fold point A to B & C to D. Press firmly into place creating a folded flap. (See diagram 1:10)
- 1.8 Remove the paper backing from one side of joint tape, apply a strip of joint tape along tape edges (top and along diagonal edge) of folded flap. (See diagram 1:10)
- 1.9 Remove paper backing from the other side of joint tape and fold flap to side of base closure. Press firmly into place. (See diagram 1:11 A & B)
- 1.10 Apply a continuous bead of C/S supplied polyurethane caulk along each inside seam of the base closure. Be sure to apply enough caulk along the seams and in the corners to create a water tight seal.

# STEP 1 CON'T

## BASE CLOSURE INSTALLATION

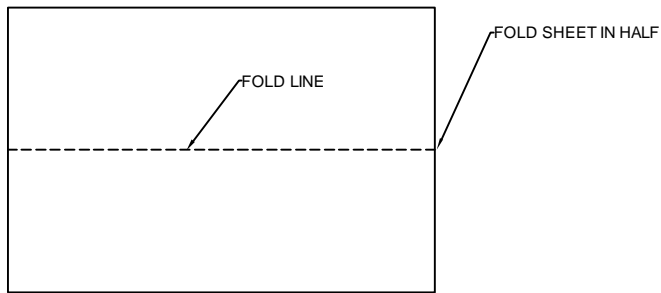


DIAGRAM 1:1

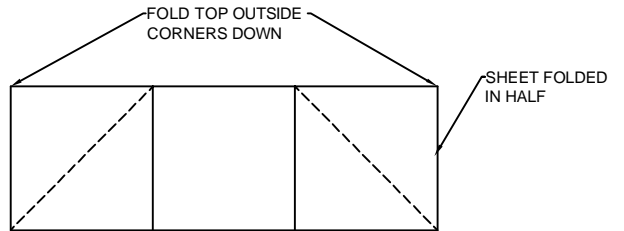


DIAGRAM 1:5

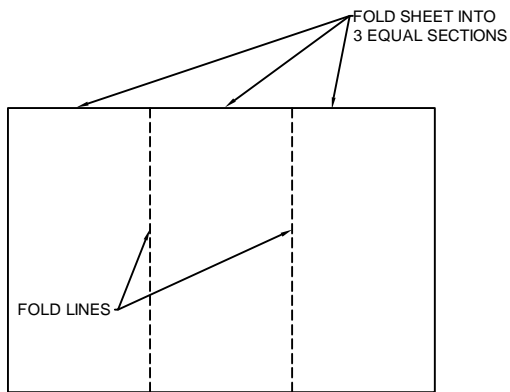


DIAGRAM 1:2

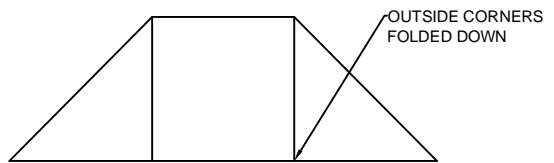


DIAGRAM 1:6

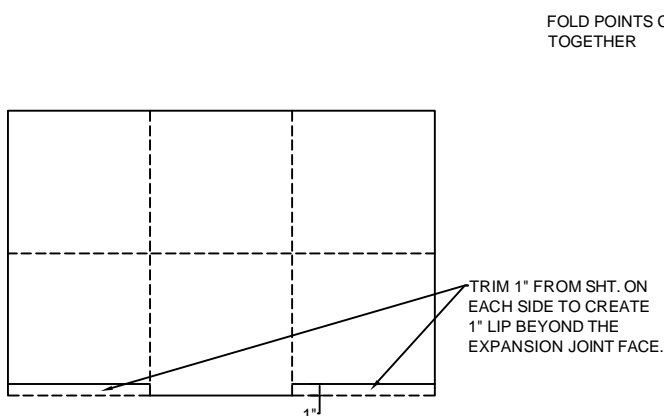


DIAGRAM 1:3

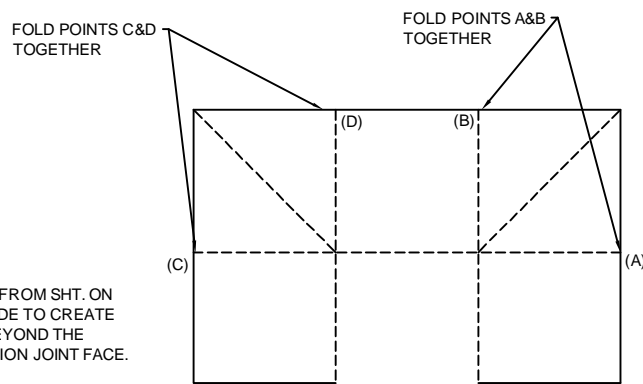


DIAGRAM 1:7

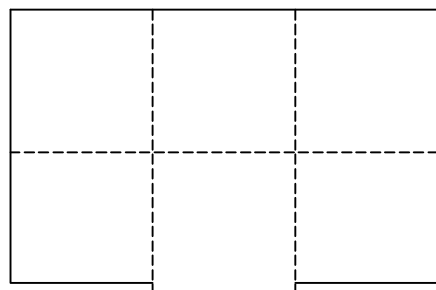


DIAGRAM 1:4

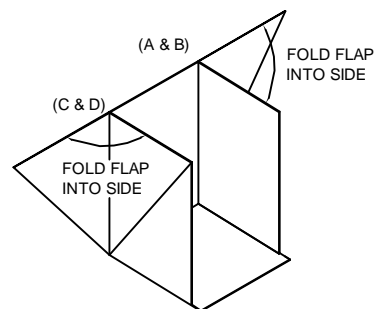
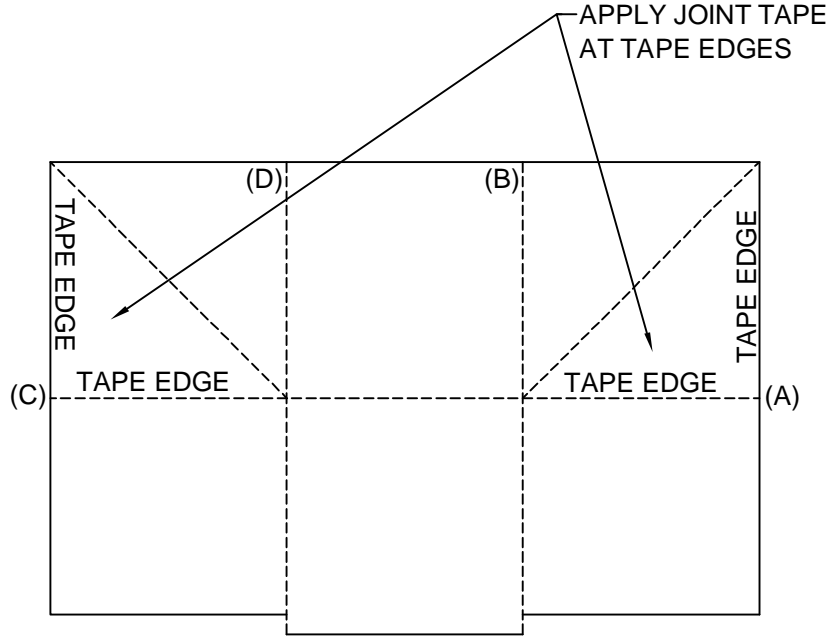


DIAGRAM 1:8

# STEP 1 CON'T

## BASE CLOSURE INSTALLATION



JOINT TAPE LOCATIONS IN PLAN VIEW  
DIAGRAM 1:9

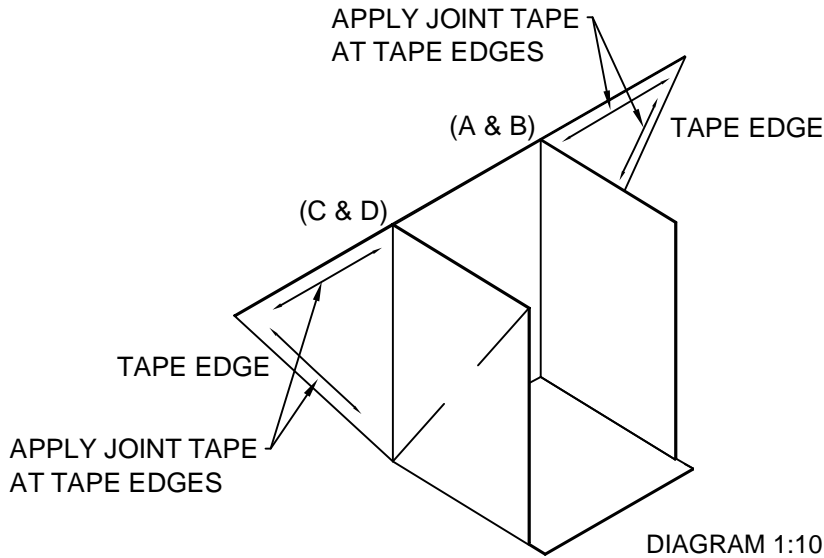


DIAGRAM 1:10

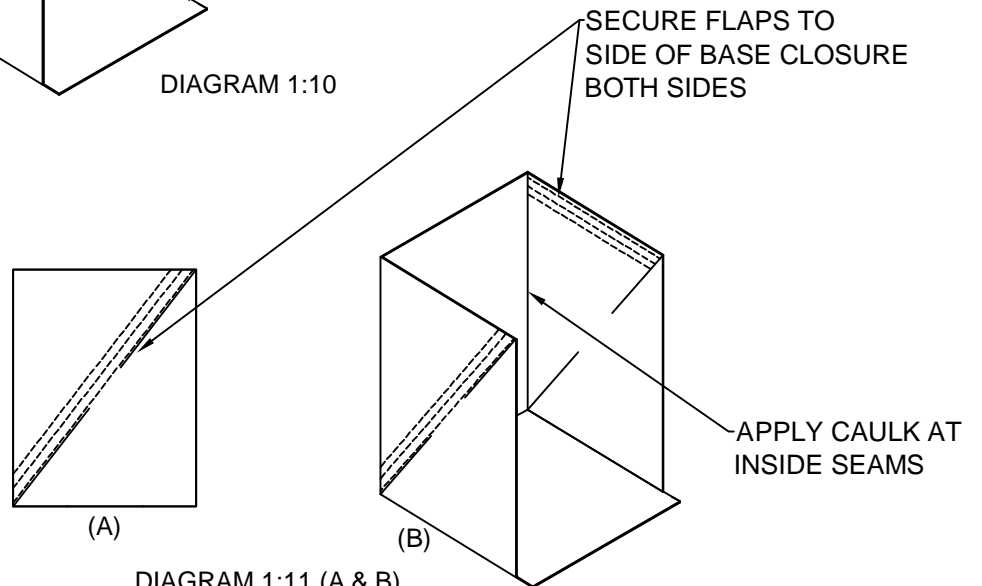


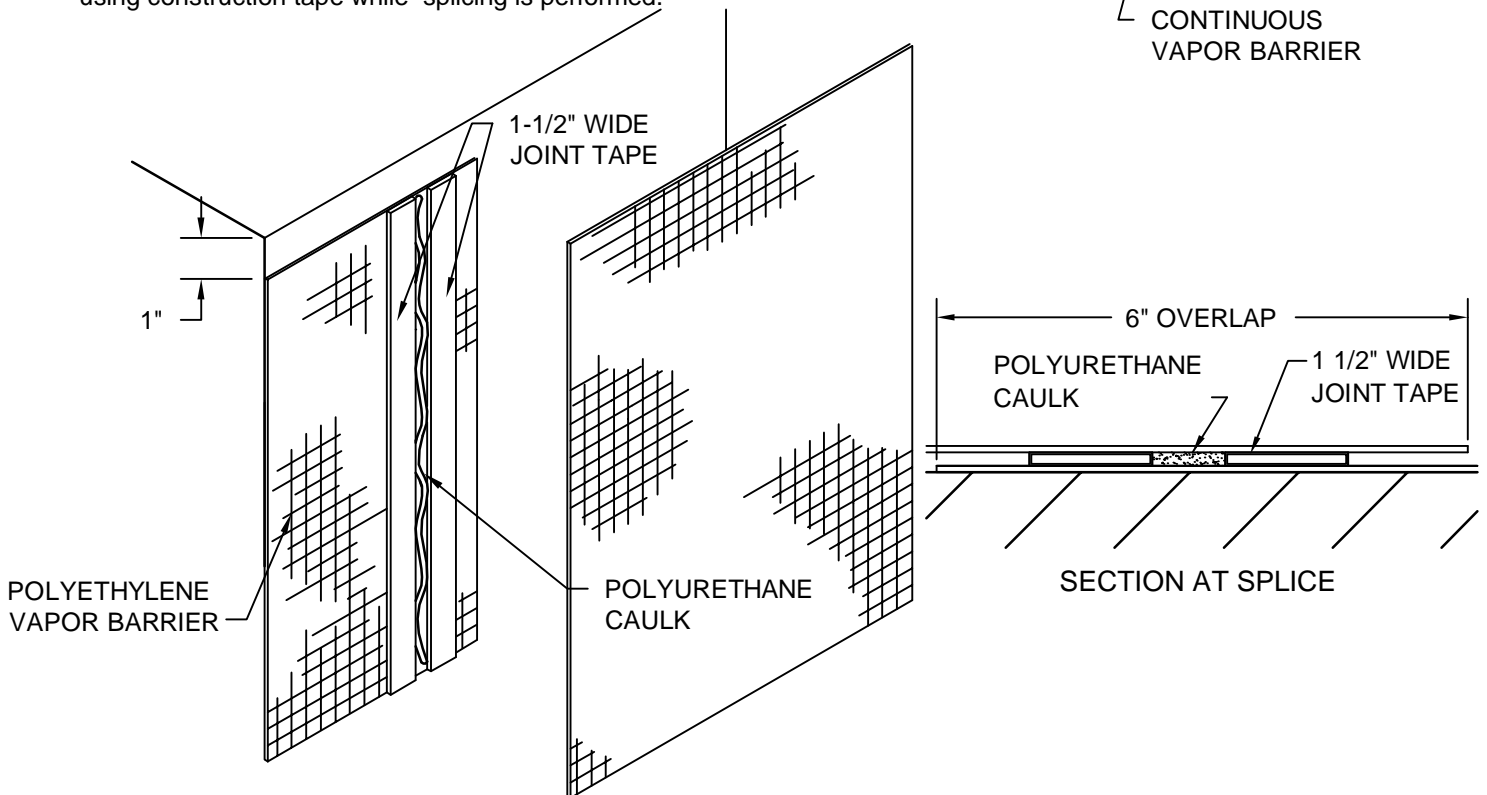
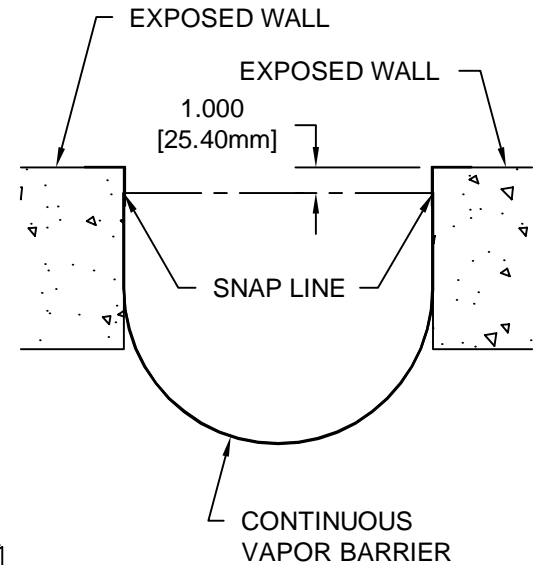
DIAGRAM 1:11 (A & B)

# STEP 2

## VAPOR BARRIER INSTALLATION

### Step 2:

1. Vapor Barrier must be installed in conjunction with Expansion Joint Cover Framework.
2. Prior to starting installation prepare the face of the slabs by removing any loose debris, oil, or grease.
3. Before beginning installation extra Vapor Barrier material should be allowed for transitioning from one run to another, where required.
4. The Vapor Barrier should be recessed 1" from the surface of the Exposed Walls. A line should be snapped on each side for reference.
5. During the installation the Vapor Barrier material can be held in place using construction tape while splicing is performed.



### Splicing Instructions:

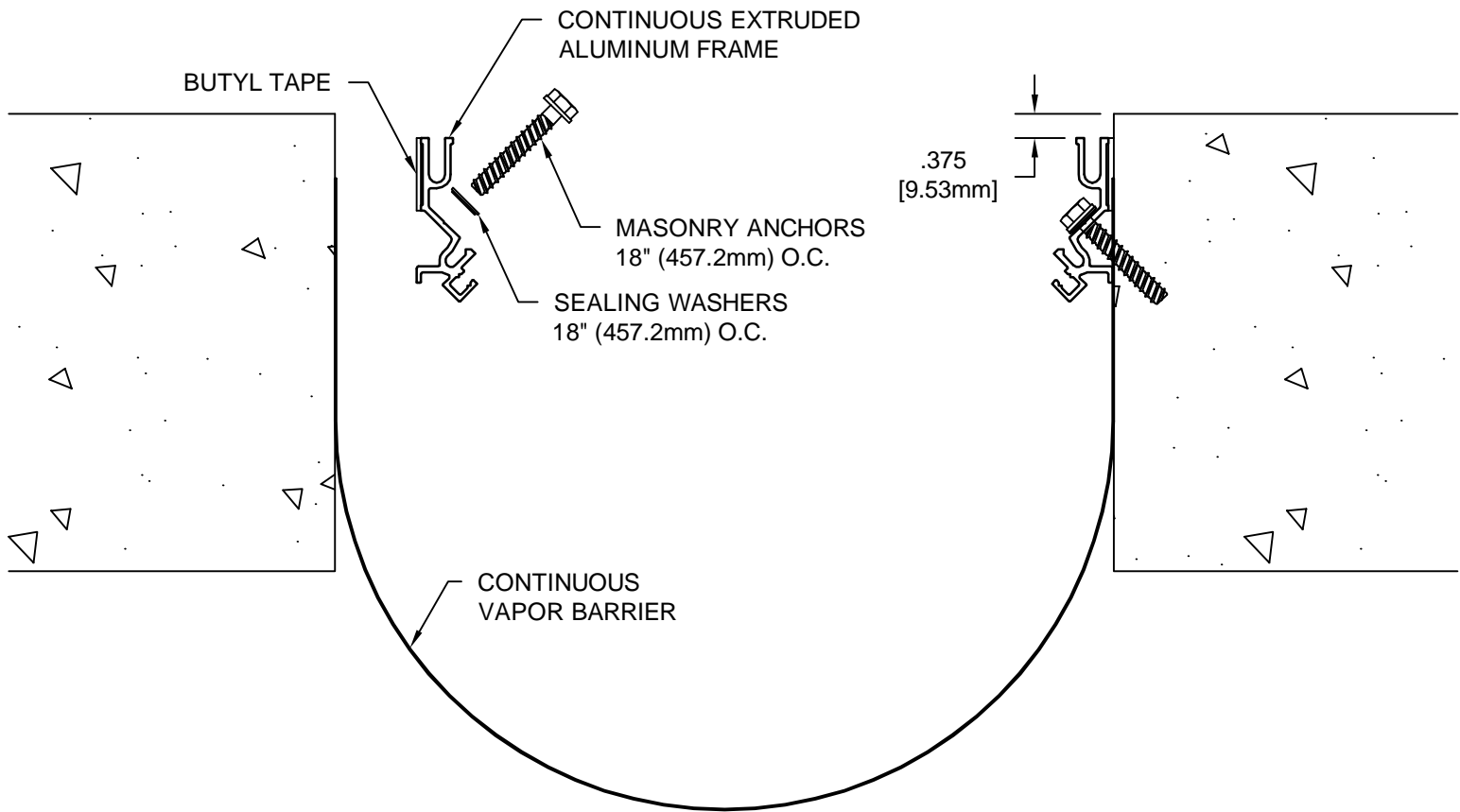
1. Mount one side of the Vapor Barrier allowing the proper amount of material for the installation conditions associated with the cover type.
2. Clean dust and debris from the surface of the water stops to be adhered.
3. Cut (2) lengths of C/S supplied 1 1/2" Wide Joint Tape, equal to the width of the Vapor Barrier drape leaving the area clear that is to be under any framework.
4. Apply the first piece of joint tape 1 1/2" from the edge of the end of the Vapor Barrier to be spliced. Apply the second piece 1/2" to 3/4" apart and parallel to the first. **DO NOT REMOVE THE PAPER BACKING.**
5. Position the next section of Vapor Barrier to overlap the previous section by 6".
6. Apply a 1/4" continuous bead of the C/S supplied polyurethane caulk between the tape strips.
7. Remove the paper backing from the joint tape and press the adjoining section of the Vapor Barrier onto the tape and caulk creating a watertight seal.
8. Splice joint is complete, continue installation.

### IMPORTANT NOTE:

Joint tape adheres instantly to the Vapor Barrier and is very difficult to remove. Use caution when placing joint tape and aligning Vapor Barrier splice.

# STEP 3

## FRAME INSTALLATION



### STEP 3:

1. Begin installation of Frames by placing a length of the Frame next to the joint. Cut Frame to length as needed.
2. Apply the C/S supplied Butyl Tape to the back side of the Frames (see detail above).
3. Beginning at one end of the run, peel the paper backing off the Butyl Tape and seat the Frame at the appropriate location in the joint (see detail above). Note: Butyl Tape should overlap the lead edge of the Vapor Barrier to create a seal.
4. Using the Frame as a template, drill holes for the C/S supplied Anchor Bolts. The holes are to be drilled with the appropriate size and type of drill bit as indicated by the manufacturer of the Anchor Bolts, as supplied by C/S.
5. Anchor the Frames with the C/S supplied Anchor Bolts following the manufacturer's guidelines.
6. Repeat the installation procedures for the opposite side of the joint and for any additional lengths of Frame.
7. Each Aluminum Frame is double punched to accept either a masonry anchor or a TEK screw depending on the field condition. All holes that do not receive a fastener, all frame butt joints, and all center mullion butt joints should be caulked with the C/S supplied Sikaflex 1A.

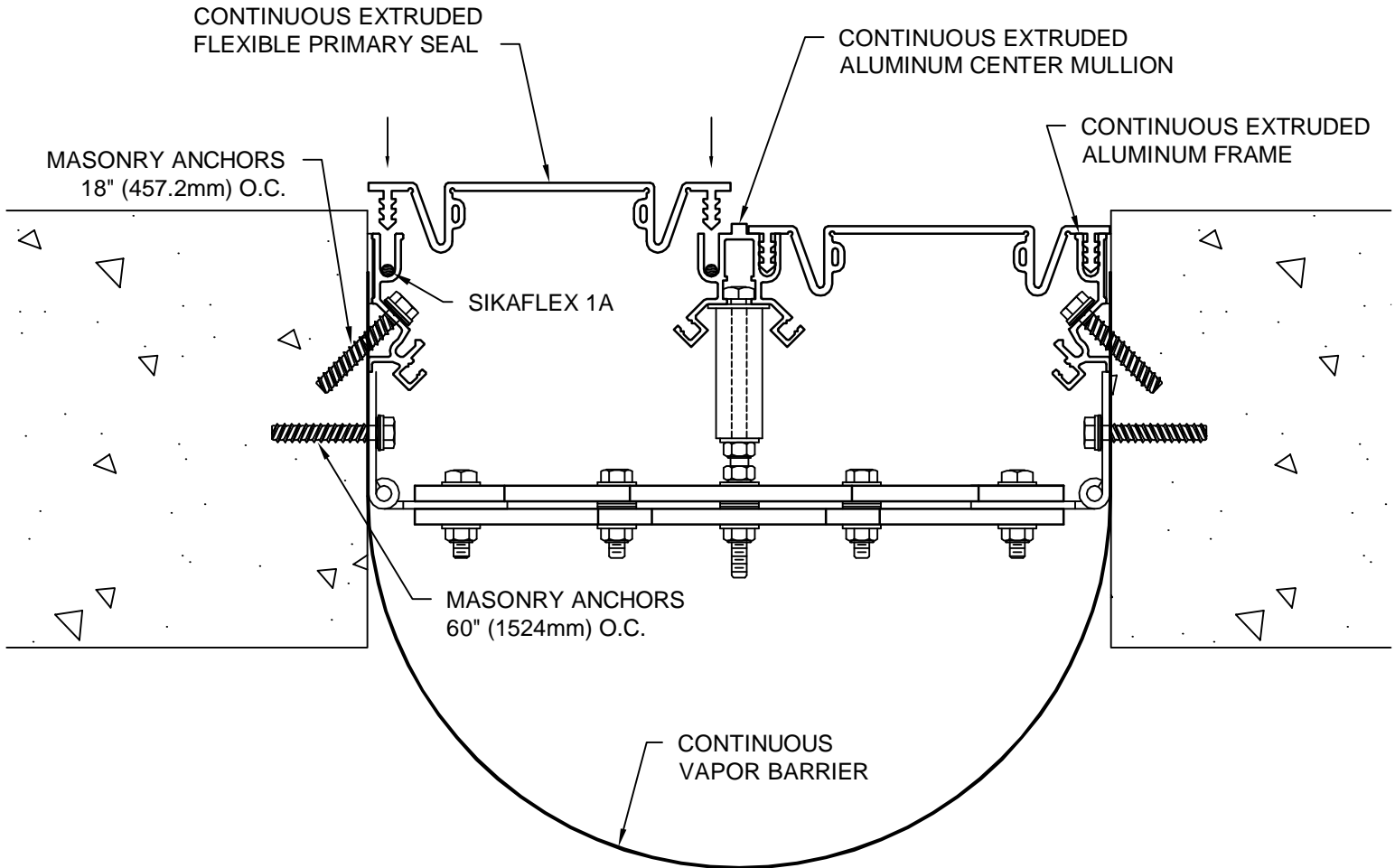


# STEP 5

## PRIMARY SEAL INSTALLATION



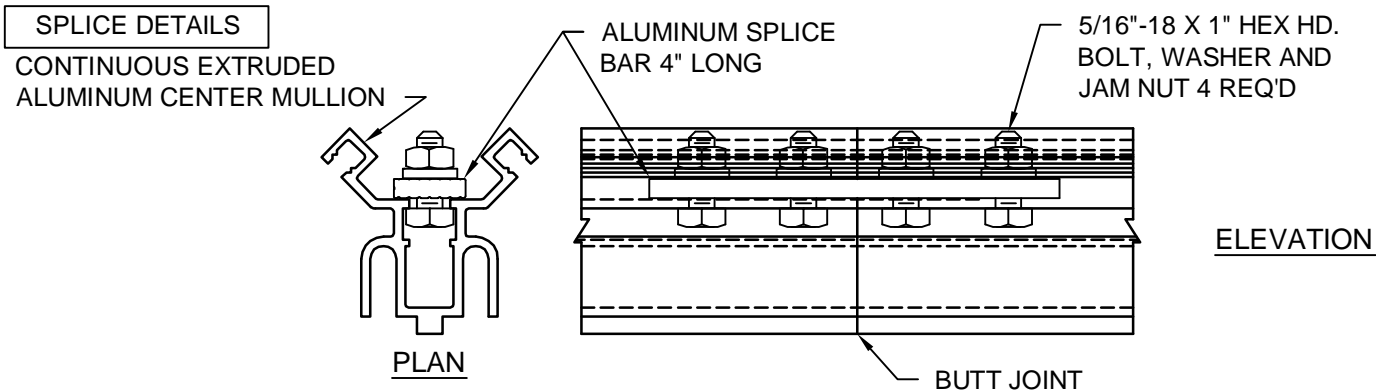
CONTINUOUS EXTRUDED FLEXIBLE  
PRIMARY SEAL USED FOR MODEL SC



### STEP 5:

1. Begin installation of Primary Seal by placing a length of the Seal next to the joint. Cut Seal to length as needed.
2. Place a 1/8" to 3/16" bead of C/S supplied Sikaflex 1A Urethane Sealant into the Primary Seal receiver slot prior to installation. Application of the Sealant will aid in the installation of the Seal as well as the weather resistance of the joint.
3. Starting at the top of the run, install the Primary Seal into the Center Mullion and then into the side Frames by pushing the Seal tabs into the receiver slots (see detail above). A rubber mallet and wood block may be used to seat the Primary Seal.
4. Repeat the Primary Seal installation procedures on the opposite side of the joint and for any additional lengths of Seal. (See Step 5 for splicing instructions.)

# STEP 6

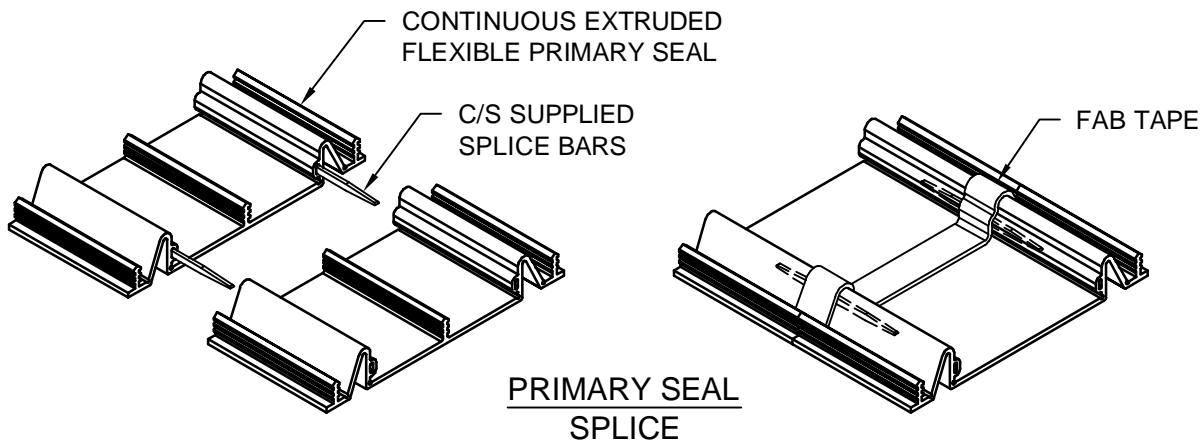


## Step 6:

### Center Mullion Splice:

### CENTER MULLION SPLICE

1. Place (4) 5/16"-18 x 1" Hex Bolts through the 4" long Splice Bar. Loosely place a 1" Flat Washer and Jam Nut onto each Bolt.
2. Insert the heads of two Bolts into the top end of one Center Mullion and the other two Bolts into the bottom of the adjacent Center Mullion.
3. Butt the ends of the Center Mullions together and tighten the Nuts.



### Cutting the Seal:

4. Determine the length of Seal required for the applicable area and measure and mark the Seal.
5. Place the Seal with the location to be cut into a miter box and flood the area to be cut with water to lubricate the saw blade.
6. Using a hacksaw and the C/S supplied serrated saw blade, make the cut using long strokes while applying downward force on the hacksaw frame. The cut should be made with as few strokes as possible in order to prevent a ragged edge on the Seal.

### Splicing:

7. Wipe the surface of the Splice Bars and the ends of the Seals to be bonded with alcohol (or similar) to remove all dirt, moisture, and oils that might affect the bond.
8. When appropriate, apply the 3M CA-40 Adhesive to half of each Splice Bar. Insert only the portion of the Splice Bar with Adhesive into the Splice Bar slot of one of the Seals. **Important:** Please observe the safety precautions on the Adhesive container!
9. Apply the CA-40 Adhesive to the entire cut surface of the Seal and the remaining portion of the Splice Bar.
10. Align the two ends of each Seal, insert the Splice Bar into the opposite Seal and bring the ends of the Seal together. Apply pressure against the ends of the Seals until the Adhesive has set.
11. Once the Adhesive has cured, cut a piece of the Fab Tape that is wide enough to span across the entire width of the backside of the Seal splice. Place the Tape so that it is centered over the butt joint and press the Tape firmly against the back of the Seal to work the Tape into all voids to create a watertight seal.