



# Expansion Joint Covers

## SJP-M Series

### Technical Data:

#### Aluminum

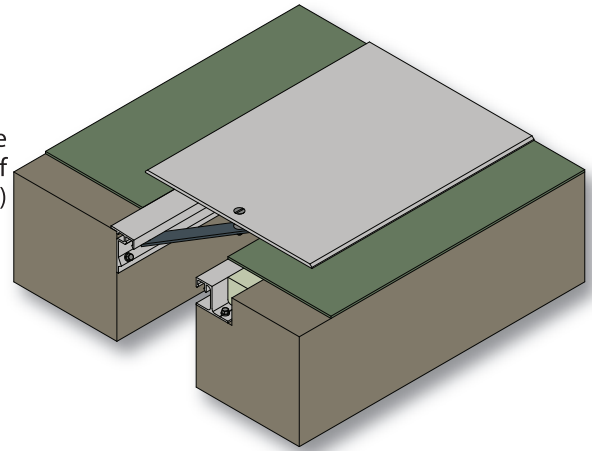
- Extrusion – C/S uses multiple alloys & tempers which are established to be the most appropriate for the given use of individual parts. Will be one of the following:(6063-T5, T6, T52) (6061-T5, T6, T51) (6105-T5, T6) (6005-T5) (6005A-T5, T61)
- Sheet – 6061-T6, 3003-H14, 5005-H34, ASTM B209

#### Turnbar

- Material – C1075 Blue Temper Spring Steel
- Hardness - RC 44-47
- Finish - "A" Coating (Corrosion Protection)

#### Standard Loading

- 500 lbs.



### Product Description:

This surface mounted metal floor cover is designed for new to existing interior or exterior applications. The joint can be designed for up to 100% movement.

### Use This Cover For:

- Interior or exterior seismic applications.
- Applications requiring movements up to 100% of joint width.
- Larger sizes available (contact factory).
- Optional waterstop available for wet areas.
- New to Existing conditions.

### Performance Characteristics:

Self-centering aluminum center plate allows for thermal movement and seismic movement.

### Standard Finishes:

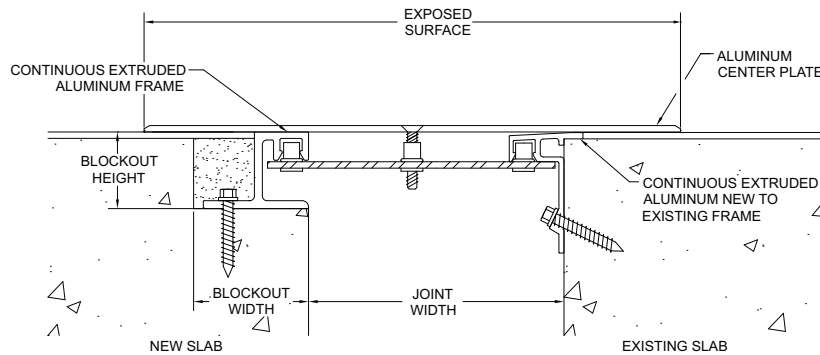
Mill finish. Aluminum surfaces in contact with concrete will be protected with a minimum 2 mil coating of a heavy metal free high solids primer.

### Installation Guidelines:

The blockouts must be prepared to receive the joint cover. It is recommended that the blockout be formed a minimum of 1/8" deeper to allow the base to be leveled prior to installation of the joint cover. Apply a high-strength leveling grout to the base of the blockouts to provide a continuous, solid, flat and level base for the joint cover. (Note: The blockouts must be level across the joint opening.) Install base frames with C/S supplied fasteners. Fasten cover plate to frames with turnbar. For complete installation instructions, please visit [www.c-sgroup.com](http://www.c-sgroup.com).

MODEL	JOINT WIDTH	MINIMUM OPENING	MAXIMUM OPENING	EXPOSED SURFACE	BLOCKOUT WIDTH	BLOCKOUT HEIGHT
SJP-100M	1.00" (25mm)	0.50" (13mm)	4.25" (108mm)	4.50" (114mm)	3.25" (83mm)	1.50" (38mm)
SJP-200M	2.00" (51mm)	1.00" (25mm)	4.75" (121mm)	4.50" (114mm)	2.75" (70mm)	1.50" (38mm)
SJP-300M	3.00" (76mm)	1.50" (38mm)	5.38" (137mm)	6.50" (165mm)	2.25" (57mm)	1.50" (38mm)
SJP-400M	4.00" (102mm)	1.50" (38mm)	8.50" (216mm)	7.50" (191mm)	2.25" (57mm)	1.50" (38mm)
SJP-500M	5.00" (127mm)	1.50" (38mm)	8.50" (216mm)	10.50" (267mm)	2.25" (57mm)	1.50" (38mm)
SJP-600M	6.00" (152mm)	1.50" (38mm)	12.00" (305mm)	11.88" (302mm)	2.25" (57mm)	1.50" (38mm)
SJP-700M	7.00" (178mm)	1.50" (38mm)	13.38" (340mm)	13.50" (343mm)	2.25" (57mm)	1.50" (38mm)
SJP-800M	8.00" (203mm)	1.50" (38mm)	13.38" (340mm)	15.00" (381mm)	2.25" (57mm)	1.50" (38mm)
SJP-900M	9.00" (229mm)	1.50" (38mm)	17.38" (441mm)	16.50" (419mm)	2.25" (57mm)	1.50" (38mm)
SJP-1000M	10.00" (254mm)	1.50" (38mm)	17.63" (448mm)	17.94" (456mm)	2.25" (57mm)	1.50" (38mm)
SJP-1100M	11.00" (279mm)	1.50" (38mm)	17.63" (448mm)	19.50" (495mm)	2.25" (57mm)	1.50" (38mm)
SJP-1200M	12.00" (305mm)	1.50" (38mm)	21.88" (556mm)	21.00" (533mm)	2.25" (57mm)	1.50" (38mm)
SJP-1300M	13.00" (330mm)	1.50" (38mm)	22.00" (559mm)	22.50" (572mm)	2.25" (57mm)	1.50" (38mm)
SJP-1400M	14.00" (356mm)	1.50" (38mm)	24.38" (619mm)	23.88" (606mm)	2.25" (57mm)	1.50" (38mm)
SJP-1500M	15.00" (381mm)	1.50" (38mm)	25.13" (638mm)	25.50" (648mm)	2.25" (57mm)	1.50" (38mm)
SJP-1600M	16.00" (406mm)	1.50" (38mm)	25.13" (638mm)	27.00" (686mm)	2.25" (57mm)	1.50" (38mm)

Contact factory for larger sizes.



SJP-M (TYP.)