



Expansion Joint Covers

SF 200/500 Series

Technical Data:

Aluminum

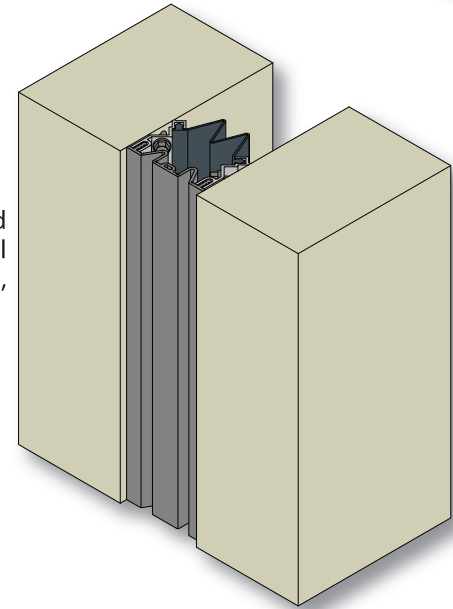
- Extrusion – C/S uses multiple alloys & tempers which are established to be the most appropriate for the given use of individual parts. Will be one of the following: (6063-T5, T6, T52) (6061-T5, T6, T51) (6105-T5, T6) (6005-T5) (6005A-T5, T61)

Santoprene™ Primary Seal

- Single Durometer: 70 Shore A, ASTM D2000
- Color: 4 standard
- Brittle Point: -76°F
- Ozone Resistance: No Cracks, ASTM D1149
- UV Resistance: Very Good

Secondary Seal

- Material – PVC, ASTM D2000
- Durometer – 65 Shore A



Product Description:

SF is a gasketed exterior wall cover comprised of extruded aluminum frames, a Santoprene™ primary seal and a PVC secondary seal. This seal is designed to accommodate 50% movement.

Use This Cover For:

- Exterior vertical applications where weather protection is critical.
- Frames designed to attach to most exterior finishes.
- 2" to 5" joint sizes with multi-directional movement.
- Factory welded transitions available.
- Four standard gasket colors.

Performance Characteristics:

Flush profile, colorable seals for exterior applications, expand and compress during movement, while providing a weather tight seal.

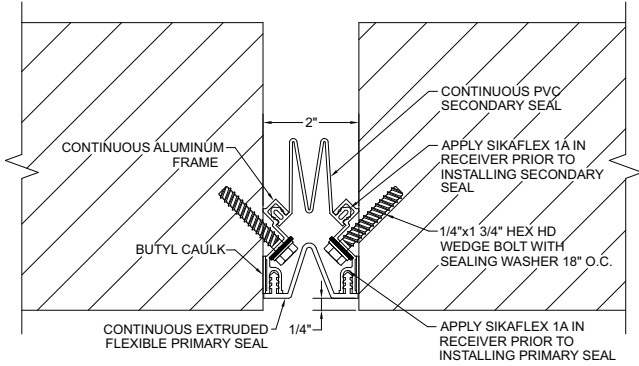
Standard Finishes:

Gasket is available in Black, White, Gray and Greige. Custom colors available.

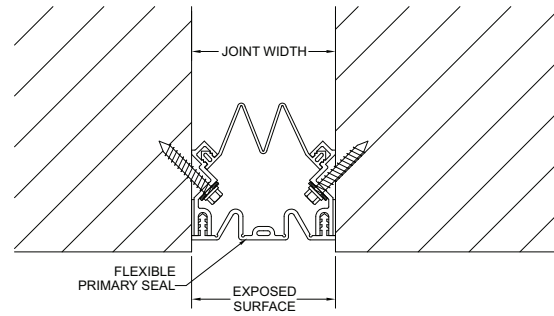
Installation Guidelines:

No blockouts required. The joint width should be consistent and smooth, respective to its nominal size. Apply butyl tape to aluminum frame and attach inside joint opening with C/S supplied fasteners. Apply sealant to aluminum frames and insert secondary seal and primary seal. For the complete installation instructions, please visit www.c-sgroup.com.

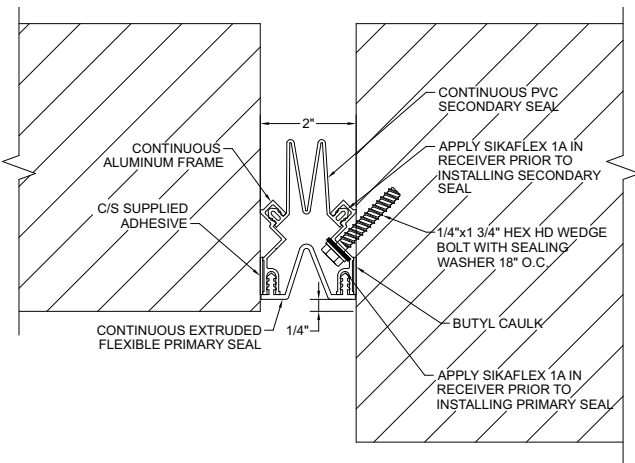
MODEL	JOINT WIDTH	MINIMUM OPENING	MAXIMUM OPENING	EXPOSED SURFACE	BLOCKOUT WIDTH	BLOCKOUT HEIGHT
SF-200	2.00" (51mm)	1.25" (32mm)	3.00" (76mm)	2.00" (51mm)	N/A	N/A
SF-300	3.00" (76mm)	1.25" (32mm)	4.50" (114mm)	3.00" (76mm)	N/A	N/A
SF-400	4.00" (102mm)	1.25" (32mm)	6.00" (152mm)	4.00" (102mm)	N/A	N/A
SF-500	5.00" (127mm)	1.25" (32mm)	7.50" (191mm)	5.00" (127mm)	N/A	N/A



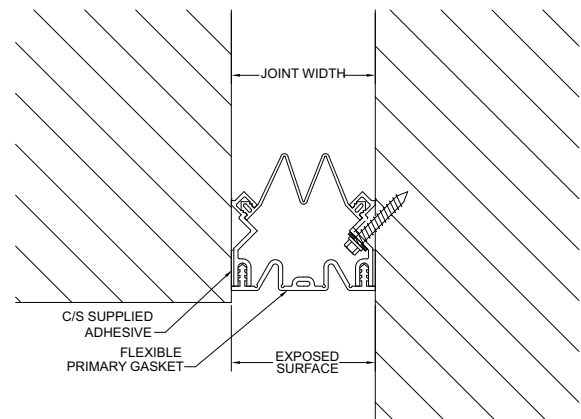
SF-200



SF-300/500



SF-200 (Corner)



SF-300/500 (Corner)