



Expansion Joint Covers

SF 1100/1600 Series

Technical Data:

Aluminum

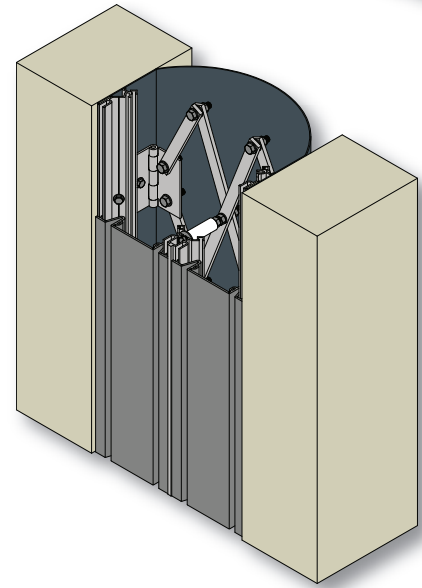
- Extrusion – C/S uses multiple alloys & tempers which are established to be the most appropriate for the given use of individual parts. Will be one of the following: (6063-T5, T6, T52) (6061-T5, T6, T51) (6105-T5, T6) (6005-T5) (6005A-T5, T61)

Santoprene™ Primary Seal

- Single Durometer: 70 Shore A, ASTM D2000
- Color: 4 standard
- Brittle Point: -76°F
- Ozone Resistance: No Cracks, ASTM D1149
- UV Resistance: Very Good

Vapor Barrier

- Material – Polyethylene, ASTM E-1745-97
- Color – Black
- 3" Tensile Strength – 275 lbs., ASTM-882
- Puncture Strength – 72 lbs., ASTM-4833
- PPT Resistance – 45 lbs., ASTM-2582



Product Description:

SF is a gasketed exterior wall cover comprised of extruded aluminum frames, a Santoprene™ primary seal and polyethylene vapor barrier. Multiple seals are used in combination to accommodate 50% movement. Seals are supported with pantograph support assemblies.

Use This Cover For:

- Exterior vertical applications where weather protection is critical.
- Frames designed to attach to most exterior finishes.
- 11" to 16" joint sizes with multi-directional movement.
(Contact factory for larger sizes)
- Factory welded transitions available.
- Four standard gasket colors.

Performance Characteristics:

Flush profile, colorable seals for exterior applications, expand and compress during movement, while providing a weather tight seal.

Standard Finishes:

Gasket is available in Black, White, Gray and Greige. Custom colors available.

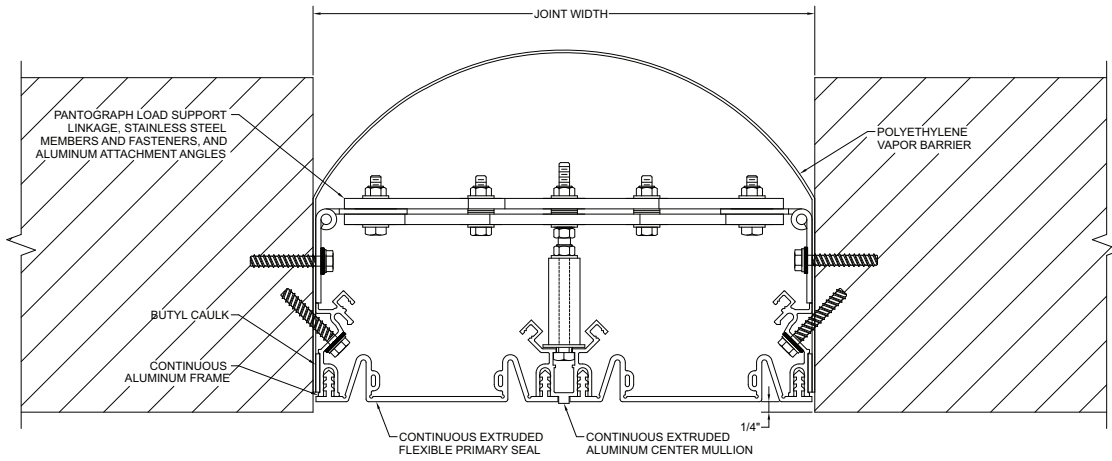
Installation Guidelines:

No blockouts required. The joint width should be consistent and smooth, respective to its nominal size. Apply butyl tape to aluminum frame and attach inside joint opening with C/S supplied fasteners. Install pantograph support system behind frames. Apply sealant to aluminum frames and insert secondary seal and primary seal. For the complete installation instructions, please visit www.c-sgroup.com.

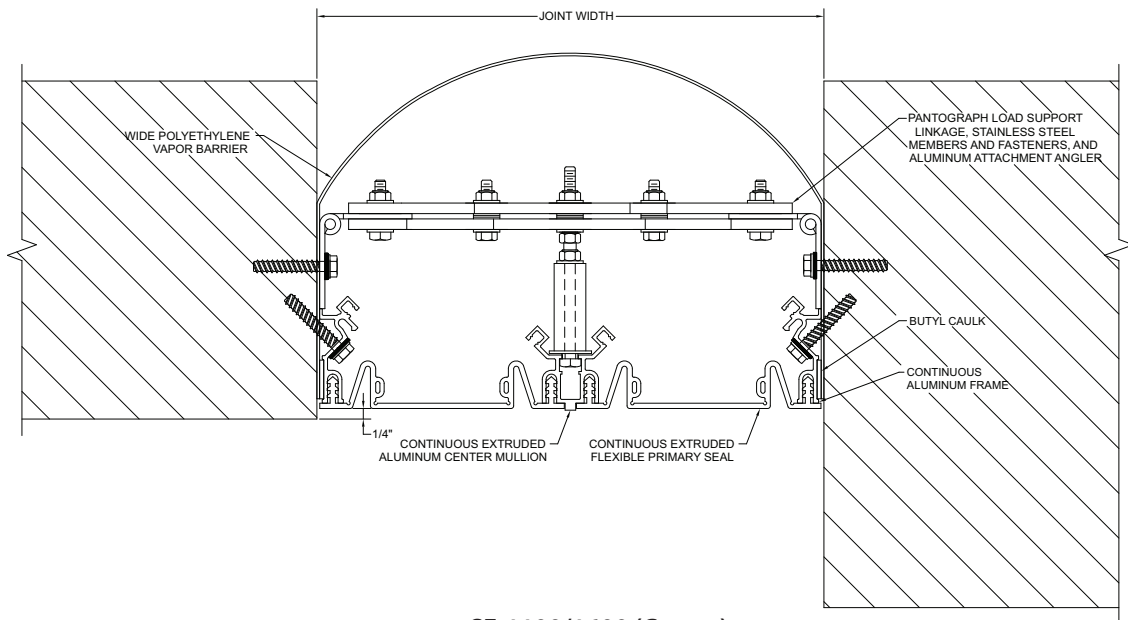
To download detail, specs & photos visit www.c-sgroup.com
For technical and design assistance call 800-233-8493.

MODEL	JOINT WIDTH	MINIMUM OPENING	MAXIMUM OPENING	EXPOSED SURFACE	BLOCKOUT WIDTH	BLOCKOUT HEIGHT
SF-1100	11.00" (279mm)	6.00" (152mm)	16.50" (419mm)	11.00" (279mm)	N/A	N/A
SF-1200	12.00" (305mm)	6.00" (152mm)	18.00" (457mm)	12.00" (305mm)	N/A	N/A
SF-1300	13.00" (330mm)	6.00" (152mm)	19.50" (495mm)	13.00" (330mm)	N/A	N/A
SF-1400	14.00" (356mm)	6.00" (152mm)	21.00" (533mm)	14.00" (356mm)	N/A	N/A
SF-1500	15.00" (381mm)	6.00" (152mm)	22.50" (572mm)	15.00" (381mm)	N/A	N/A
SF-1600	16.00" (406mm)	6.00" (152mm)	24.00" (610mm)	16.00" (406mm)	N/A	N/A

Contact factory for larger sizes.



SF-1100/1600



SF-1100/1600 (Corner)