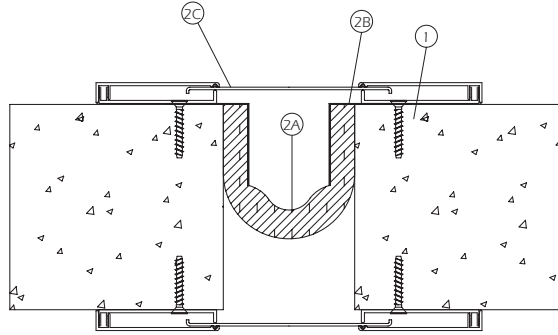


Multiflex[®] 3"-6" Wall



UL[®] Classification
2-Hour Rated

UL SYSTEM NO. WW-D-1057



1. **Wall Assembly** — Min 4-1/2 in. thick reinforced lightweight or normal weight (100-150 pcf) structural concrete. Wall may also be constructed of any UL Classified **Concrete Blocks***.

See Concrete Blocks (CAZT) category in the Fire Resistance Directory for names of manufacturers.

2. **Joint System Max** — **width of joint (at time of installation of joint system) is 3, 4, 5 or 6 in. The joint system is designed to accommodate a max 50 percent compression, extension or vertical shear from its installed width.** The joint system consists of the following:

A. **Mechanical Joint Assembly** — Fire barrier material encased in corrugated metal and provided with metal flanges. Assembly to be installed on either side of wall in accordance with the installation instructions provide with the product. The following assemblies are to be used with the different joint sizes:

Nom Joint Width In.	Mechanical Joint Designation
3	MFX-3W
4	MFX-4W
5	MFX-5W
6	MFX-6W

CONSTRUCTION SPECIALTIES INC

B. **Retaining Angles** — Min 2-1/2 by 2-1/2 in. 20 gauge (or heavier) galvanized steel angles installed over steel flanges of joint. Angles to extend entire length of joint and are to be attached to wall assembly with min 1/4 in. diam by 1-1/2 in. long masonry anchors spaced a max of 18 in. on center.

C. **Joint Cover** — Min 0.034 in. thick metallic cover plates secured to each side of wall, continuous over full height of joint. Cover plates attached to wall on one side of opening only with min 1/4 in. diam by 1-1/2 in. long masonry anchors spaced a max of 18 in. on center.

*Bearing the UL Classification Mark

UL Label †



†APPLIED TO FIRE BARRIER MATERIAL

*=NOM JOINT WIDTH