



# Expansion Joint Covers

## GTW & GTWC Series

### Technical Data:

#### Aluminum

- Extrusion – C/S uses multiple alloys & tempers which are established to be the most appropriate for the given use of individual parts. Will be one of the following:(6063-T5, T6, T52) (6061-T5, T6, T51) (6105-T5, T6) (6005-T5) (6005A-T5, T61)

#### Primary Seal

- Dual Durometer 65 Shore A, 90 Shore A, ASTM D2000
- Available in 4 colors.

#### Turnbar

- Injection Molded, Glass-Reinforced Plastic

### Product Description:

This dual gasket, flush wall cover is ideal for areas with larger thermal movement requirements. This model is also designed to match flush Twinline covers used in the floor.

### Use This Cover For:

- Wall and ceiling applications to match flush Twinline covers used in the floor.
- Suitable for most wall and ceiling finishes.
- Where hygiene is important.

### Performance Characteristics:

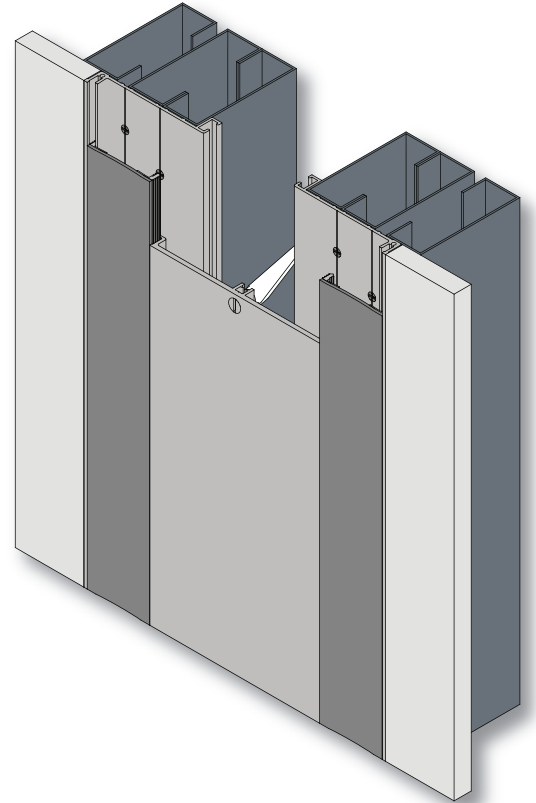
The dual durometer thermoplastic gasket has rigid edges designed to lock into the aluminum retainers. This prevents hairline gaps from opening between the gasket and retainer ensuring a hygienic seal. The softer center section of the gasket allows full movement without the need for grooves in the face surface which collect dirt. Dual gaskets allow for greater expansion and compression during movement. Durable self-centering aluminum plate spans joint opening.

### Standard Finishes:

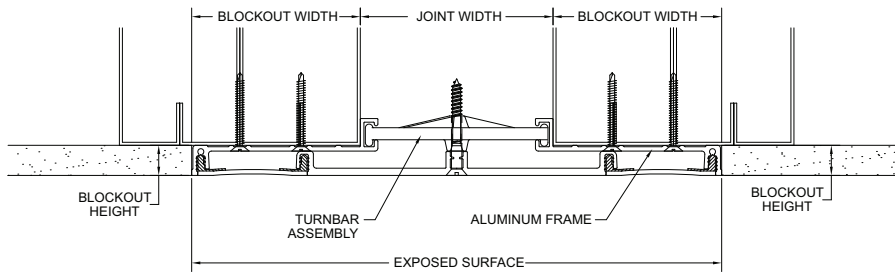
Clear anodize on any exposed aluminum. Aluminum center plate can be painted to match adjacent wall finishes. Gasket is available in Black, White, Gray, & Greige.

### Installation Guidelines:

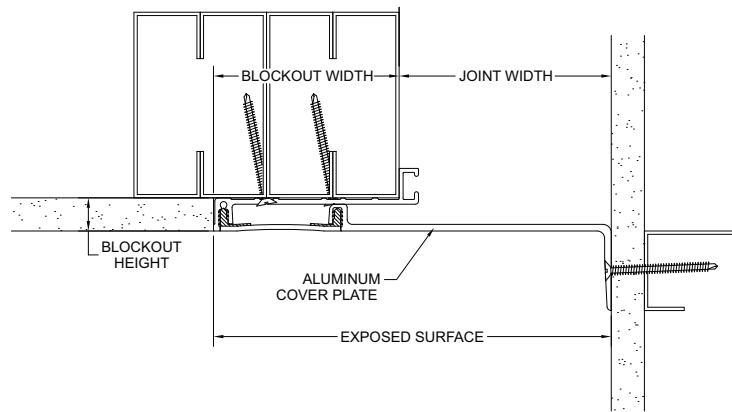
The blockouts must be prepared to receive the expansion joint cover. Attach the aluminum retainers to wall using mechanical fasteners. This model also uses a turnbar assembly. For the complete installation instructions, please visit [www.c-sgroup.com](http://www.c-sgroup.com).



MODEL	JOINT WIDTH	MINIMUM OPENING	MAXIMUM OPENING	EXPOSED SURFACE	BLOCKOUT WIDTH	BLOCKOUT HEIGHT
GTW-200	2.00" (51mm)	1.25" (32mm)	3.75" (95mm)	6.50" (165mm)	2.25" (57mm)	0.63" (16mm)
GTW-300	3.00" (76mm)	1.25" (32mm)	6.00" (152mm)	10.00" (254mm)	3.50" (89mm)	0.63" (16mm)
GTW-400	4.00" (102mm)	1.25" (32mm)	6.25" (159mm)	11.00" (279mm)	3.50" (89mm)	0.63" (16mm)
GTWC-200	2.00" (51mm)	1.00" (25mm)	3.00" (76mm)	4.25" (108mm)	2.25" (57mm)	0.63" (16mm)
GTWC-300	3.00" (76mm)	1.50" (38mm)	4.50" (114mm)	6.50" (165mm)	3.50" (89mm)	0.63" (16mm)
GTWC-400	4.00" (102mm)	2.50" (64mm)	5.50" (140mm)	7.50" (191mm)	3.50" (89mm)	0.63" (16mm)



GTW (TYP.)



GTWC (TYP.)