



Expansion Joint Covers

CSAB Series

Technical Data:

Wing Seal

- Material – Santoprene™ 591-73
- Durometer – 73 Shore A
- Color – Black.

Anchor Blocks

- Material – Neoprene
- Durometer – 60 Shore A Min
- Internal Reinforcing – A36 Steel

Product Description:

C/S model CSAB is a heavy-duty elastomeric expansion joint system designed for use in parking structures, loading docks, and other areas requiring vehicular or forklift traffic. The system is composed of a Santoprene wing seal and heavy-duty neoprene anchor blocks with integrally-molded steel reinforcement plate, mechanically secured to the structure. Anchor blocks are supplied in 4'-0" lengths, molded with interlocking ends. Seal supplied in 50'-0" lengths. Seal splices to be heat-welded in the field.

Use This Cover For:

- Seismic applications in parking and other areas with vehicular access.

Performance Characteristics:

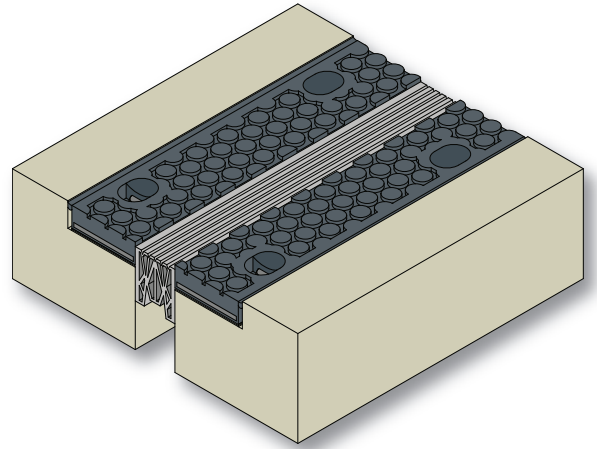
Parking structure seal system featuring bolt down heavy-duty anchor blocks. ADA compliant.

Standard Finishes:

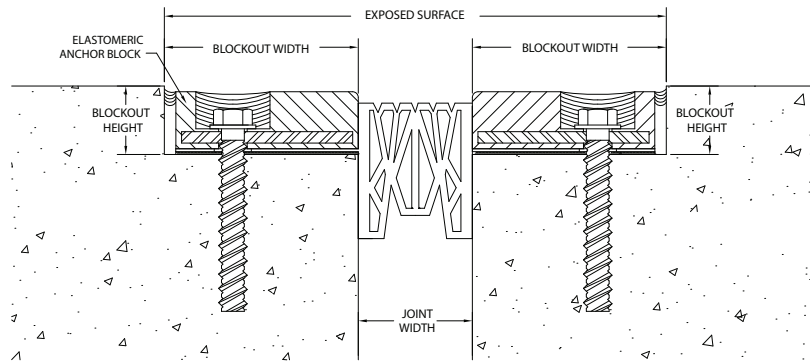
Material – UV-resistant, black (all components).

Installation Guidelines:

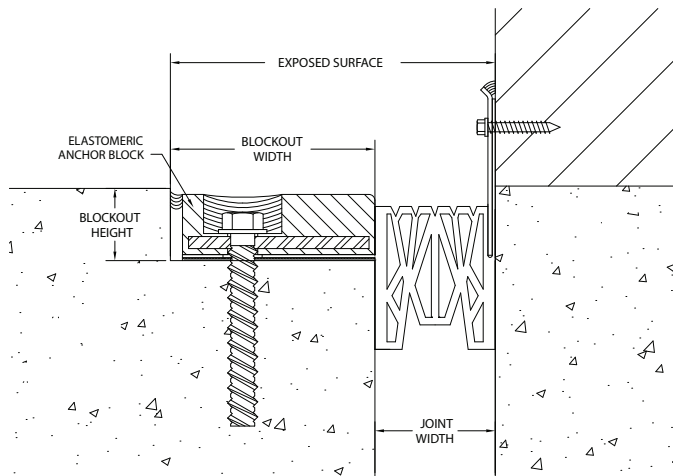
Blockouts are required by this model and should be straight and parallel. Sandblast the joint to clean it. Compress seal and insert into the joint until the wings are flush with the bottom of the blockout. Roll back wing and apply C/S supplied tack coat. Reposition wings and anchor blocks into blockout and anchor with C/S supplied fasteners. Please refer to the complete C/S installation instructions at www.c-sgroup.com.



MODEL	JOINT WIDTH	MINIMUM OPENING	MAXIMUM OPENING	EXPOSED SURFACE	BLOCKOUT WIDTH	BLOCKOUT HEIGHT
CSAB-225	1.50" (38mm)	0.75" (19mm)	2.00" (51mm)	9.50" (241mm)	4.25" (108mm)	1.50" (38mm)
CSAB-300	2.13" (54mm)	1.25" (32mm)	2.75" (70mm)	10.13" (257mm)	4.25" (108mm)	1.50" (38mm)
CSAB-400	2.88" (73mm)	1.25" (32mm)	3.75" (95mm)	10.88" (276mm)	4.25" (108mm)	1.50" (38mm)
CSAB-600	3.50" (89mm)	2.00" (51mm)	5.75" (146mm)	11.50" (292mm)	4.25" (108mm)	1.50" (38mm)
CSABW-225	1.50" (38mm)	0.75" (19mm)	2.00" (51mm)	5.25" (133mm)	4.25" (108mm)	1.50" (38mm)
CSABW-300	2.13" (54mm)	1.25" (32mm)	2.75" (70mm)	5.88" (149mm)	4.25" (108mm)	1.50" (38mm)
CSABW-400	2.88" (73mm)	1.25" (32mm)	3.75" (95mm)	6.63" (168mm)	4.25" (108mm)	1.50" (38mm)
CSABW-600	3.50" (89mm)	2.00" (51mm)	5.75" (1406mm)	7.25" (184mm)	4.25" (108mm)	1.50" (38mm)



CSAB (TYP.)



CSABW (TYP.)