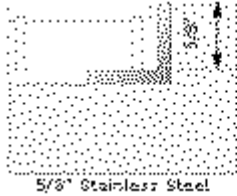
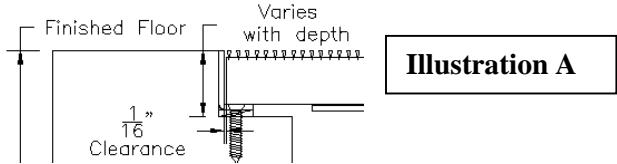


# Installation Instructions Gridline G6 W/ DP and NP Frame 5/8" or 1-1/8"



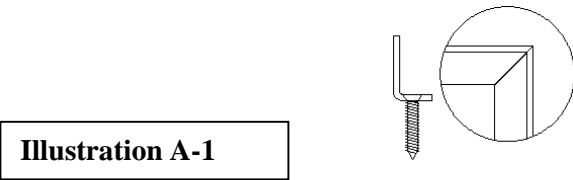
## 1). Site Prep

- Use wood forms to prepare a recess in the concrete. Recess depth can range, depending on actual size required by architect or engineer.
- Recess should be made to overall size of unit
- Be sure to pour a ledge for the perimeter frame at a minimum of 1-1/2" wide. (See Illustration A)
- After concrete has cured, remove the wood forms.
- Recess must be level



## 2). Assemble Perimeter Frame

- Assemble the perimeter frame. The ends of the frame pieces have been mitered, pre-drilled and countersunk to allow for quick assembly. (See Illustration A-1)



## 3). Set Perimeter Frame

- Set the frame assembly around the perimeter of the formed recess. (Illustration C Next Page)
- Shim the frame as required 24" o.c. to elevate the frame assembly to finished floor height.
- Before fastening, double check the finished floors surface height, and ensure that frame assembly is both plumb and square.
- Drill a hole using the 5/32" masonry bit into concrete using the pre-countersunk holes in the frame.
- Install 3/16" masonry anchor. (anchors and bit included in hardware package)

## 4). Assembling Supports and Support Legs

- Assemble all supports by installing support legs 24" on center to continuous supports with hardware provided.
- For depths greater than 3" adjust height of the supports and support legs by using the angles and 1/4" aluminum bar provided to achieve the height required. (See Illustration B-1)
- For depths less than 3" adjust height of supports and support legs (No aluminum bar required) by using the angles provided to achieve the height required. (See Illustration B-2)

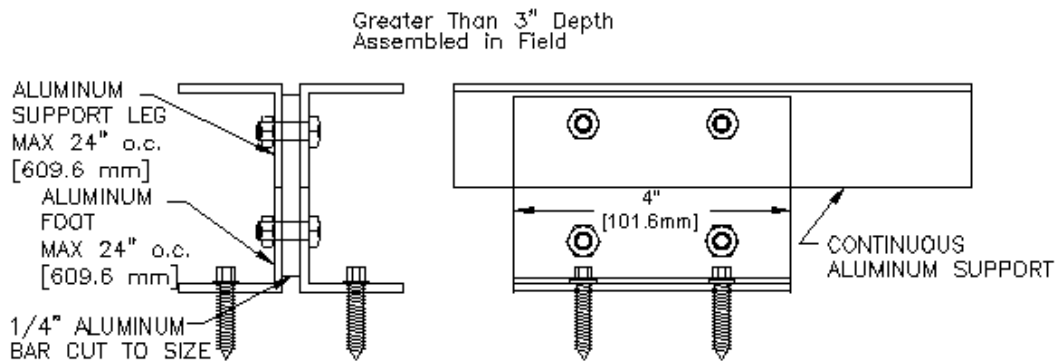


Illustration B-1

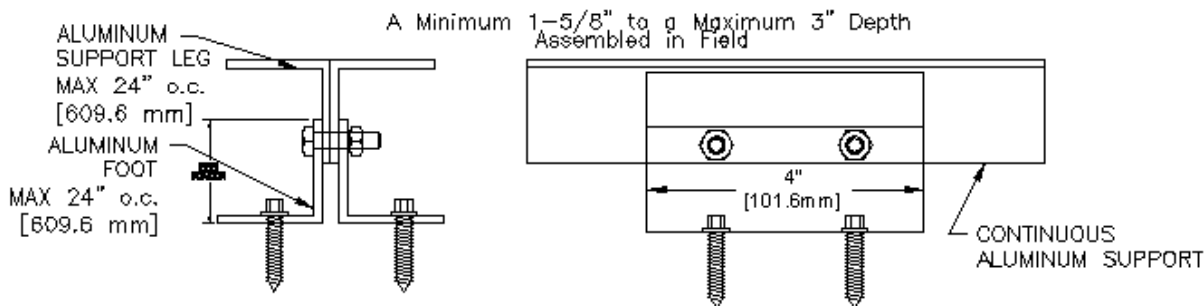
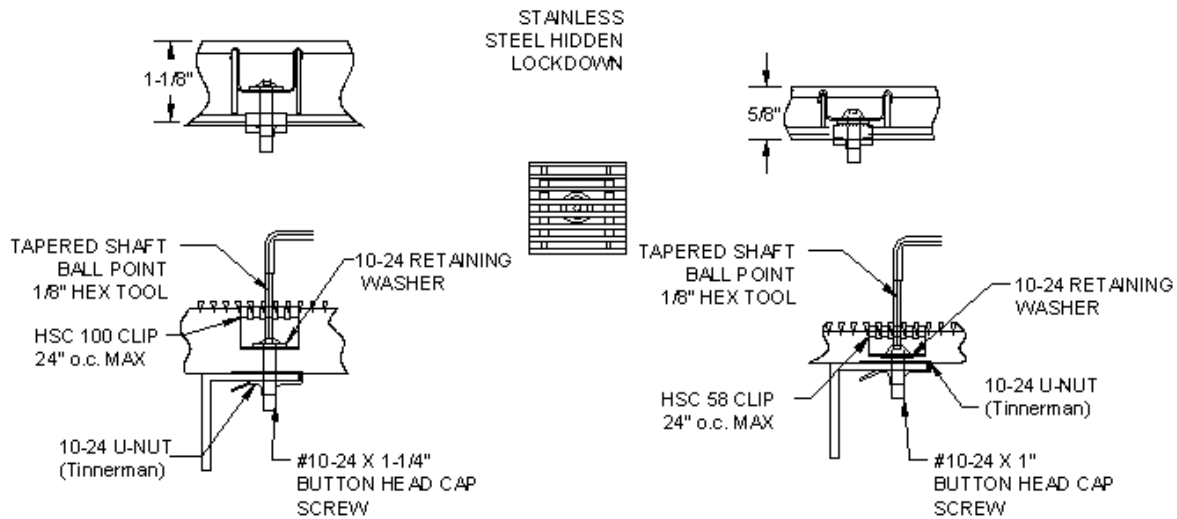


Illustration B-2

## 5). Setting the supports

- For drain pan applications grout only to height of shims. Installed frames will allow a void between interior frame legs. Apply aluminum sheets as laid out on shop fabrication drawings into remaining void.
- All sheets must be adhered to substrate with a silicon caulk. Apply sufficient bead of caulk at joints to provide a moisture seal
- Locate drainpipe in recess and cut a hole in the pan to install the two-inch drain.  
(See illustration C)
- Install continuous support 24" on center parallel to surface wires.
- Continuous supports must be located at all module splits.





## 7.) Completion

It is necessary to cover the installation with  $\frac{3}{4}$ " plywood until all additional project work is completed. This will protect the Gridline from potential abuse during the construction phase. Damage occurring from inadequate protection during this phase may void the manufacturer's warranty.

## 8.) Care and Maintenance Instructions

- Manufacturer's suggested safe rolling load for the Gridline G6 is 300# per wheel for deep pit application. Heavy loads beyond this weight may damage the units, contributing to their premature failure or creating a tripping hazard.
- Clean the recess as frequently as necessary. This will prevent an excess buildup of dirt under the grids.
- Clean the grids, when cleaning the recess, using a power sprayer to wash and clean each module. Remove all clogged or caked materials from within all aperture openings.
- Replacement of the gridline modules, Replace each module to original position and engage all fasteners prior to final tightening of each fastener. Cleaning enables Gridline to function as intended. Call us at (800) 233-8493 (Muncy) or (888) 895-8955 (Canada) and our sales group will assist you with special needs or conditions, loading considerations and installation related issues.



**Construction Specialties™**

[www.c-sgroup.com](http://www.c-sgroup.com)

U.S.A. 800-233-8493  
Canada 888-895-8955