

HELIX MODEL Z2 WITH THRESHOLD FRAME

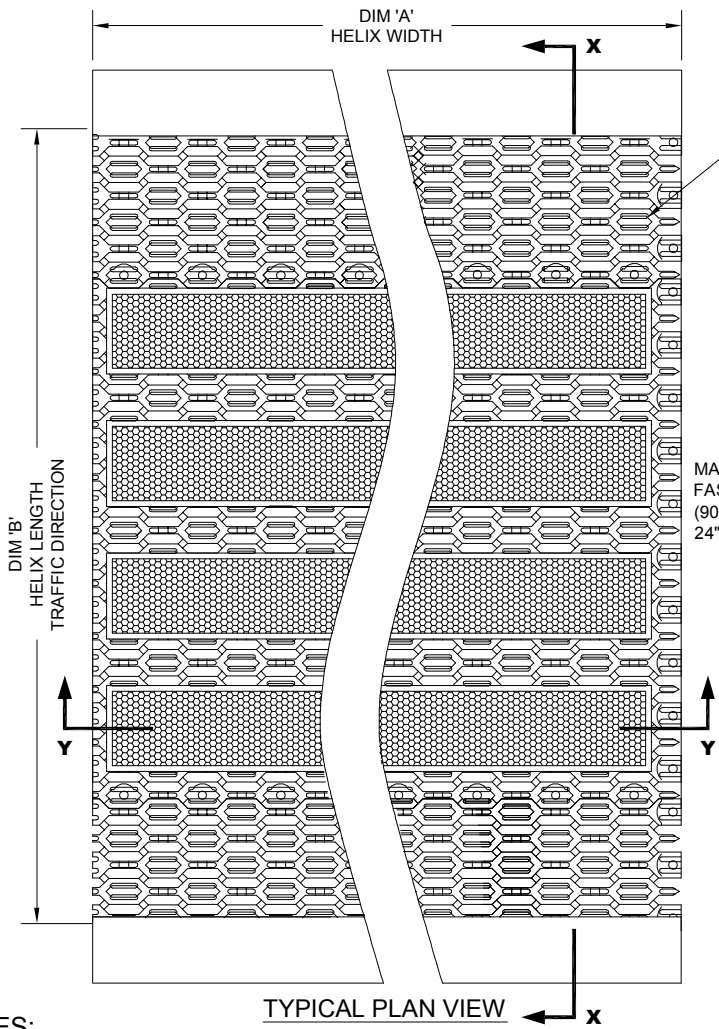
INSERT STYLE: Z2

INSERT COLOR:

CATALOG NUMBER: HZ2

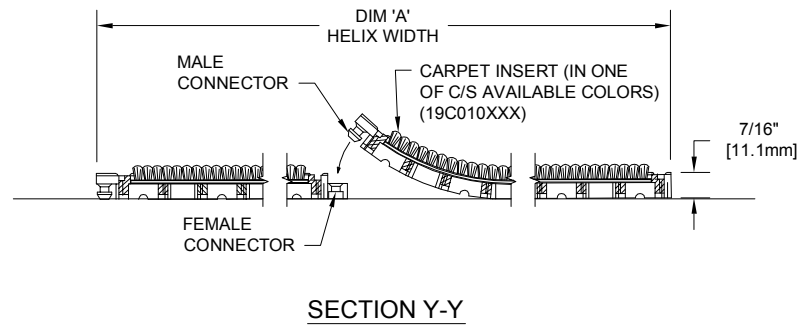
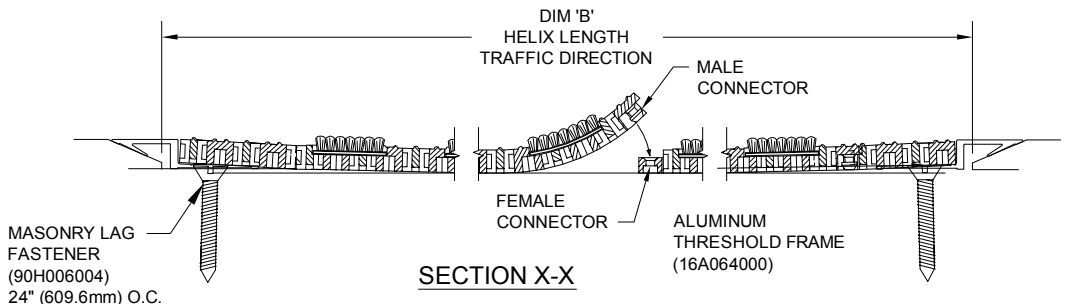
PART NUMBER: 181004XXX

NO.	REVISION	DATE	BY
NO.	F&F RELEASE	DATE	BY



HELIX Z1 TILE AROUND PERIMETER FOR ANY TRIMMING.

FIELD NOTE: DIM 'B' TO BE TAKEN FROM EDGE OF DOOR THRESHOLD TO EDGE OF DOOR THRESHOLD.



NOTES:

*SUPPLIED IN 3' X 3' OR 4' X 3' MODULES TO SPEED FIELD ASSEMBLY. OPTIONAL SINGLE TILE BOXES (60 TILES) ARE AVAILABLE.

*INDIVIDUAL 12" X 9" TILE MODULES CAN EASILY BE REPLACED DUE TO ABNORMAL ABUSE OR WEAR FROM USE IN APPLICATION.

*ADDITIONAL SPECIFICATIONS ARE CONTAINED IN THE LATEST C/S CATALOG OR AT C-SGROUP.COM AND ARE CONSIDERED PART OF THIS TRANSMITTAL.

*HELIX Z2 IS ABLE TO SUPPORT A 600 LB ROLLING LOAD.

CS Construction Specialties™
 6608 Route 408 Highway, Manay PA 17786
 (800) 233-8493 · Fax: (570) 546-4692 · www.c-sgroup.com

PLEASE VERIFY ALL	QTY	MARK #	LOCATION	MODEL	DIM 'A' WIDTH	DIM 'B' LENGTH	MAT COLOR (BLACK, GRAY, OR BROWN)	FRAME FINISH

PROJECT:		
LOCATION:		
CONTRACTOR:		
AGENT:		SHT:
DRG. BY:	DATE:	JOB NO.: