

HELIX MODEL Z2 WITH PEDITRED PIPESTEM FRAME

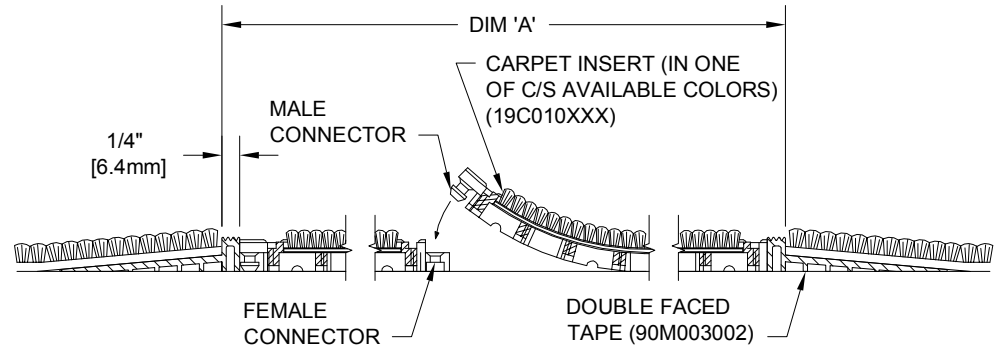
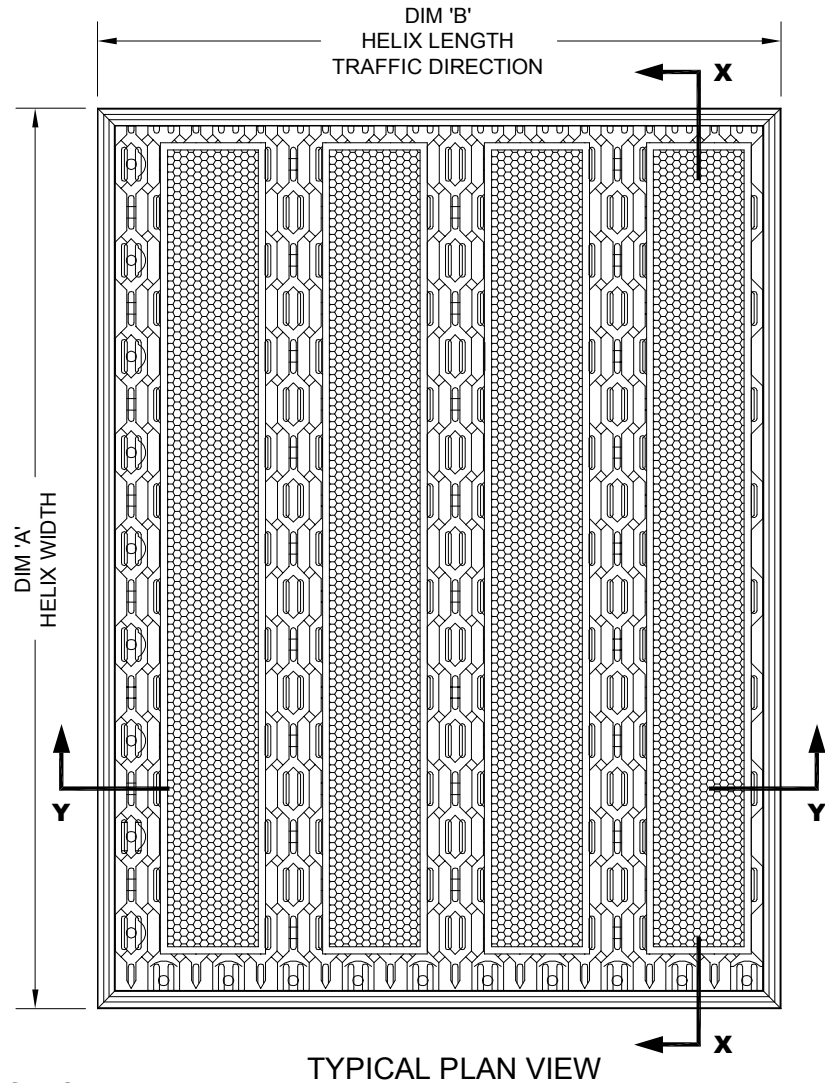
INSERT STYLE: Z2

INSERT COLOR:

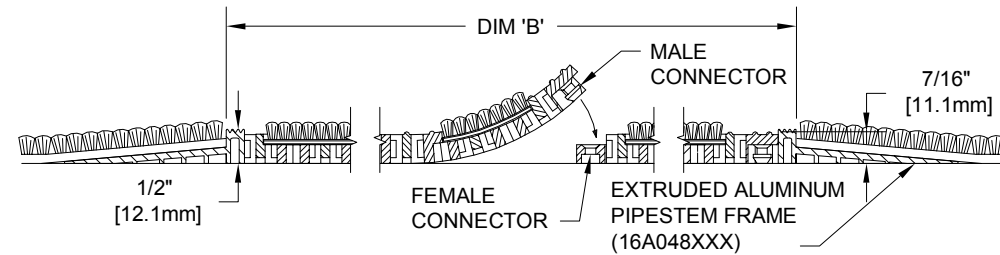
CATALOG NUMBER: HZ2

PART NUMBER: 18I004XXX

NO.	REVISION	DATE	BY
NO.	F&F RELEASE	DATE	BY



SECTION X-X



SECTION Y-Y

NOTES:

\*SUPPLIED IN 3' X 3' OR 4' X 3' MODULES TO SPEED FIELD ASSEMBLY. OPTIONAL SINGLE TILE BOXES (60 TILES) ARE AVAILABLE.

\*ADDITIONAL SPECIFICATIONS ARE CONTAINED IN THE LATEST C/S CATALOG OR AT C-SGROUP.COM AND ARE CONSIDERED PART OF THIS TRANSMITTAL.

\*HELIX Z2 IS ABLE TO SUPPORT A 600 LB ROLLING LOAD.

\*INDIVIDUAL TILES MEASURE 12" WIDE BY 9" IN LENGTH.

**CS Construction Specialties™**  
 6898 Route 405 Highway, Muncy PA 17786  
 (800) 233-6488 · Fax: (570) 546-4662 · www.csgroup.com

PLEASE VERIFY ALL	QTY	MARK #	LOCATION	MODEL	DIM 'A' WIDTH	DIM 'B' LENGTH	MAT COLOR (BLACK, GRAY, OR BROWN)	FRAME FINISH

PROJECT:		
LOCATION:		
CONTRACTOR:		
AGENT:		SHT:
DRG. BY:	DATE:	JOB NO.: