

**HELIX MODEL Z1 WITH THRESHOLD FRAME**

INSERT STYLE: Z1

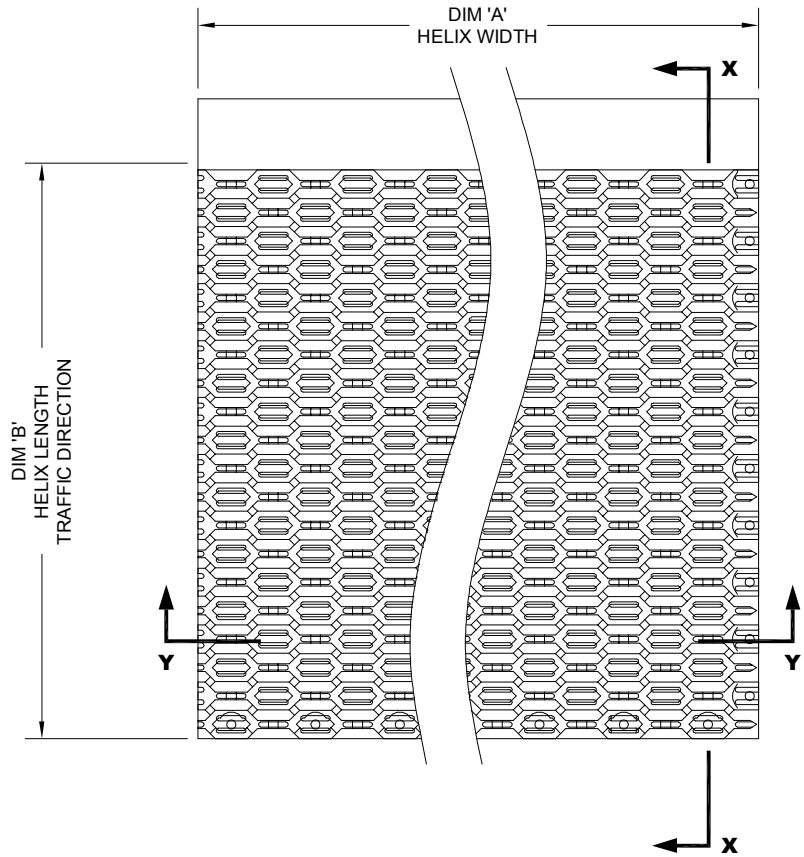
INSERT COLOR: NA

CATALOG NUMBER: HZ1

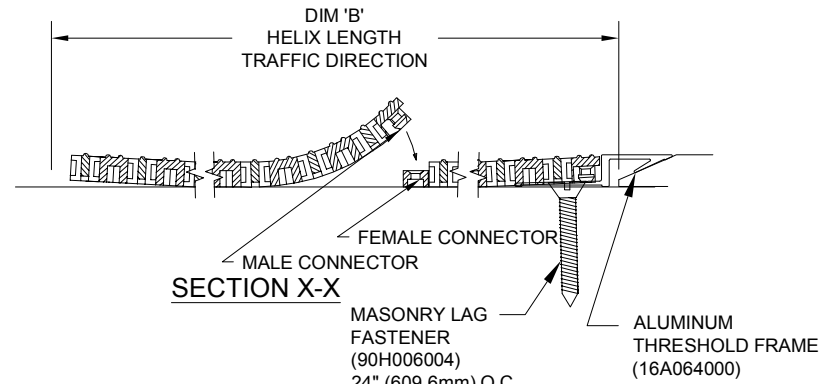
PART NUMBER: 181001XXX

NO.	REVISION	DATE	BY
NO.	F&F RELEASE	DATE	BY

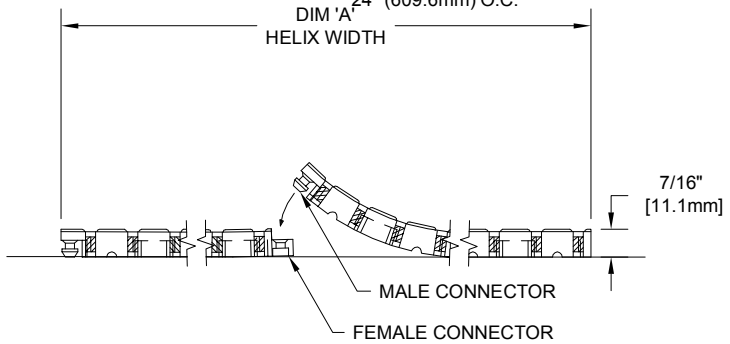
FIELD NOTE: DIM 'B' TO BE TAKEN FROM FACE OF DOOR THRESHOLD TO DOOR THRESHOLD.



**TYPICAL PLAN VIEW**



**SECTION X-X**



**SECTION Y-Y**

**NOTES:**

\*SUPPLIED IN 3' X 3' OR 4' X 3' MODULES TO SPEED FIELD ASSEMBLY. OPTIONAL SINGLE TILE BOXES (60 TILES) ARE AVAILABLE.

\*ADDITIONAL SPECIFICATIONS ARE CONTAINED IN THE LATEST C/S CATALOG OR AT C-SGROUP.COM AND ARE CONSIDERED PART OF THIS TRANSMITTAL.

\*INDIVIDUAL 12" X 9" TILE MODULES CAN EASILY BE REPLACED DUE TO ABNORMAL ABUSE OR WEAR FROM USE IN APPLICATION.

\*HELIX Z1 IS ABLE TO SUPPORT A 600 LB ROLLING LOAD.


**Construction Specialties™**  
6806 Route 408 Highway, Muncy PA 17788  
 (800) 233-8495 · Fax: (570) 546-4622 · www.c-sgroup.com

PLEASE VERIFY ALL	QTY	MARK #	LOCATION	MODEL	DIM 'A' WIDTH	DIM 'B' LENGTH	MAT COLOR (BLACK, GRAY, OR BROWN)	FRAME FINISH

PROJECT:		
LOCATION:		
CONTRACTOR:		
AGENT:		SHT:
DRG. BY:	DATE:	JOB NO.: