

1 1/8" GRIDLINE WITH DEEP PIT NO PAN FRAME AND HIDDEN LOCK DOWNS

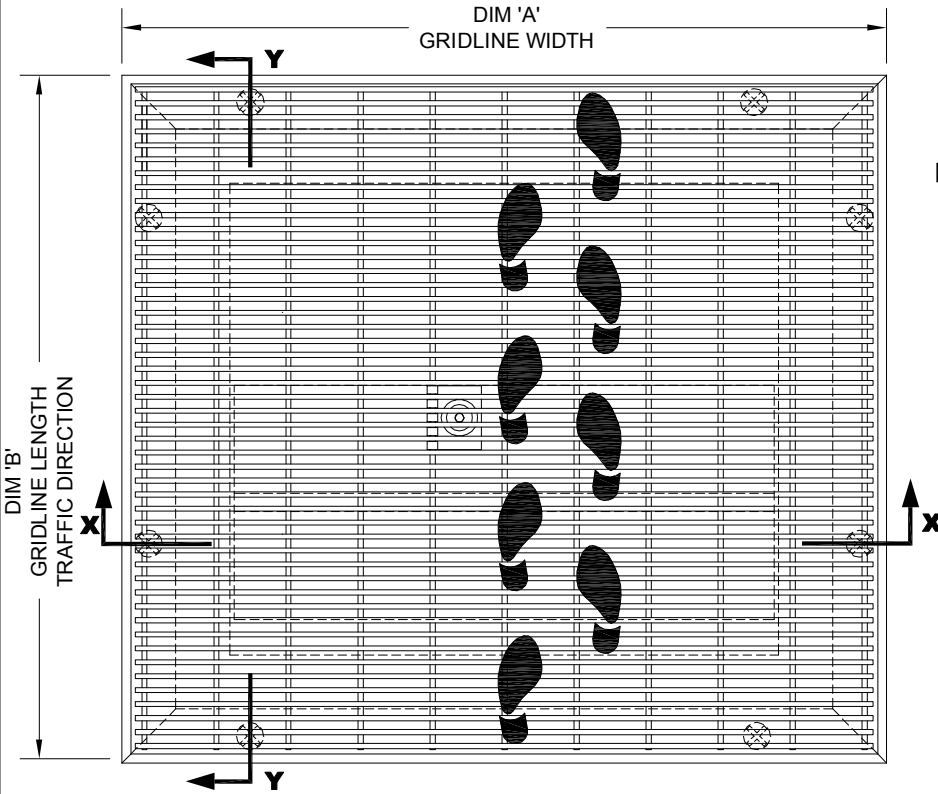
INSERT STYLE: N/A

INSERT COLOR: N/A

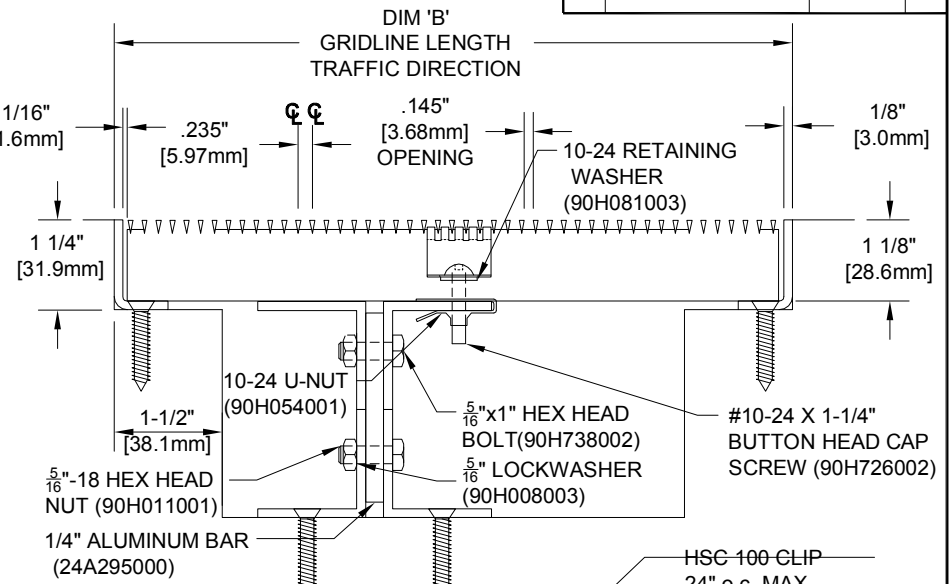
CATALOG NUMBER: G6

PART NUMBER:

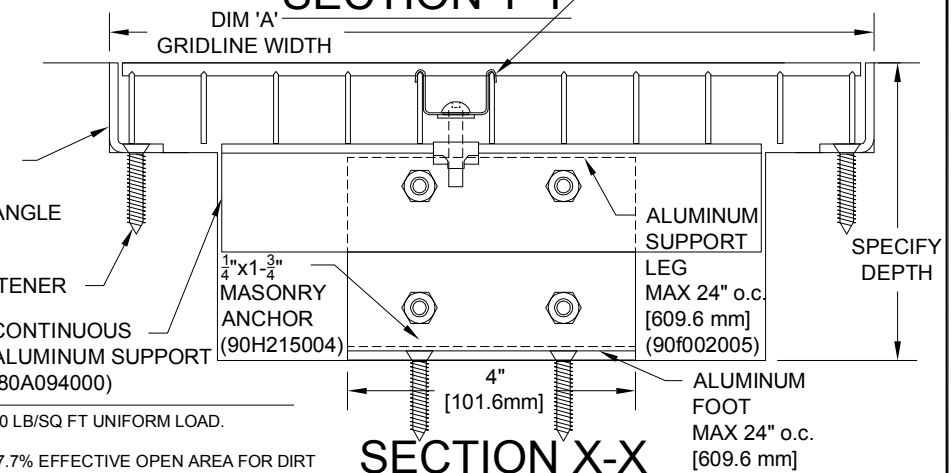
NO.	REVISION	DATE	BY
NO.	F&F RELEASE	DATE	BY



TYPICAL PLAN VIEW



SECTION Y-Y



SECTION X-X

DEEP PIT FRAME
1 1/4" X 3/4" X 1/8"
STAINLESS STEEL ANGLE
(16S001000)

MASONRY LAG FASTENER
(90H066004)
24" (609.6mm) O.C.

CONTINUOUS
ALUMINUM SUPPORT
(80A094000)

1/4" X 1 3/4"
MASONRY
ANCHOR
(90H215004)

ALUMINUM
SUPPORT
LEG
MAX 24" o.c.
[609.6 mm]
(90F002005)

ALUMINUM
FOOT
MAX 24" o.c.
[609.6 mm]

NOTES:

*MAX. SINGLE GRID SIZE NOT TO EXCEED 8'-0" [2.438M] IN WIDTH (DIM 'A') OR 4'-0" [1.22M] IN LENGTH (DIM 'B')

*ALL SURFACE WIRES AND SUPPORT BARS ARE ELECTRONICALLY RESISTANCE WELDED TO ENSURE CORRECT WEIGHT BEARING PROPERTIES.

*GRIDS SHALL BE ABLE TO SUPPORT A 300 LB/SQ FT UNIFORM LOAD.

* SURFACE WIRE SPACING PROVIDES A 57.7% EFFECTIVE OPEN AREA FOR DIRT AND MOISTURE REMOVAL.

**ADDITIONAL SPECIFICATIONS ARE CONTAINED IN THE LATEST C/S CATALOG OR AT C-SGROUP.COM AND ARE CONSIDERED PART OF THIS TRANSMITTAL.

CS Construction Specialties
8808 Route 405 Highway, Muncy PA 17798
(800) 233-8493 · Fax: (570) 546-4692 · www.c-sgroup.com

QTY	MARK #	LOCATION	MODEL	DIM 'A' WIDTH	DIM 'B' LENGTH	FRAME FINISH	REMARKS

PROJECT:		
LOCATION:		
CONTRACTOR:		
AGENT:		SHT:
DRG. BY:	DATE:	JOB NO.:

PLEASE VERIFY ALL