

**PEDITRED LP WITH TAPERED ALUMINUM ANGLE FRAME**

INSERT STYLE:

INSERT COLOR:

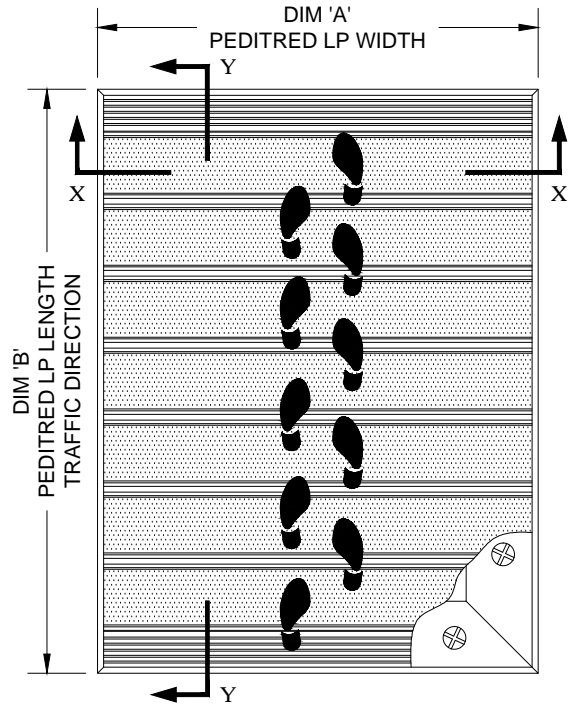
CATALOG NUMBER: G3

PART NUMBER:

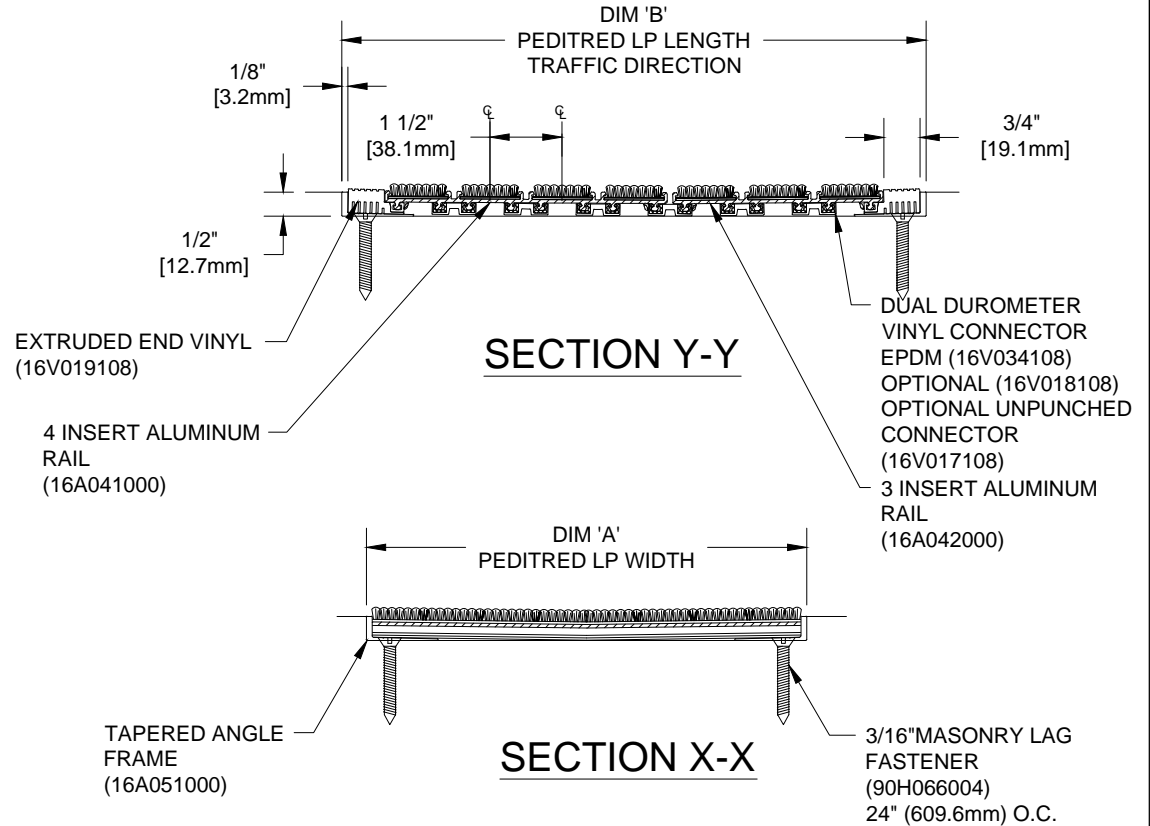
NO.	REVISION	DATE	BY
NO.	F&F RELEASE	DATE	BY

					
RECYCLED RUBBER	EXTERIOR CARPET	HEAVY-DUTY CARPET	VINYL	VINYL-ABRASIVE	POURED ABRASIVE INSERT
G3RR	G3EC	G3HC	G3V	G3VA	G3PA
19R001XXX	19C018XXX	19C010XXX	19V002XXX	19M001XXX	19A005XXX

**PEDITRED INSERT STYLES**



**TYPICAL PLAN VIEW**



**SECTION Y-Y**

**SECTION X-X**

EXTRUDED END VINYL (16V019108)  
4 INSERT ALUMINUM RAIL (16A041000)

DUAL DUROMETER VINYL CONNECTOR EPDM (16V034108)  
OPTIONAL (16V018108)  
OPTIONAL UNPUNCHED CONNECTOR (16V017108)  
3 INSERT ALUMINUM RAIL (16A042000)

TAPERED ANGLE FRAME (16A051000)

3/16" MASONRY LAG FASTENER (90H066004)  
24" (609.6mm) O.C.

**NOTES:**

\*ALL SURFACES IN CONTACT WITH MASONRY ARE TO RECEIVE A COAT OF ZINC CHROMATE PRIMER  
\*PLEASE VERIFY TRAFFIC DIRECTION  
\*PEDITRED LP SHALL BE ABLE TO SUPPORT A 750 LB. ROLLING LOAD.

\*MAX. SINGLE GRID SIZE NOT TO EXCEED 12'-0" (3.66M) IN WIDTH (DIM "A") OR 100 SQUARE FEET  
\*ADDITIONAL SPECIFICATIONS ARE CONTAINED IN THE LATEST C/S CATALOG OR AT C-SGROUP.COM AND ARE CONSIDERED PART OF THIS TRANSMITTAL.

\*SUPPLIED IN STANDARD MILL FINISH. (OPTIONAL FINISHES AVAILABLE AT ADDITIONAL COST)

**CS Construction Specialties**  
6896 Route 405 Highway, Muncy PA 17756  
(800) 233-8493 • Fax (570) 546-8992 • www.c-sgroup.com

PLEASE VERIFY ALL	QTY	MARK #	LOCATION	MODEL	DIM 'A' WIDTH	DIM 'B' LENGTH	FINISH	NOTES

PROJECT:		
LOCATION:		
CONTRACTOR:		
AGENT:		SHT:
DRG. BY:	DATE:	JOB NO.: