

PEDITRED LP WITH ALUMINUM PIPESTEM FRAME

INSERT STYLE:

INSERT COLOR:

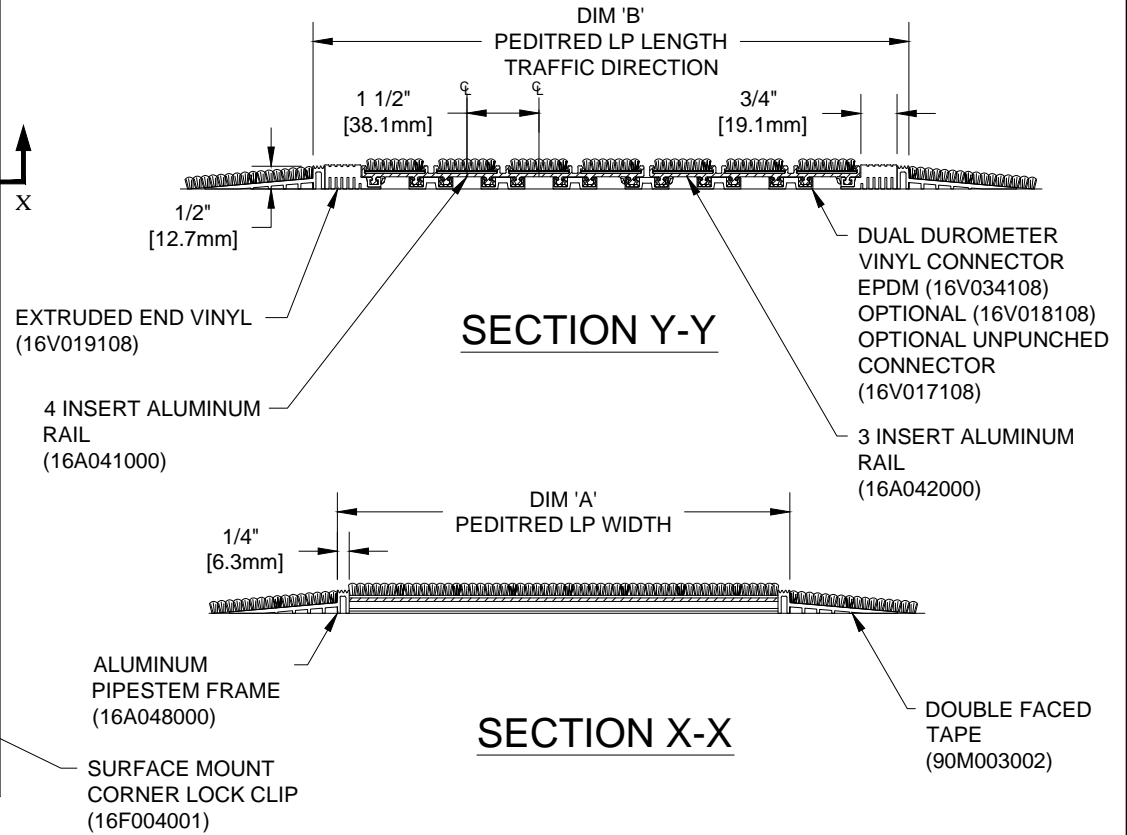
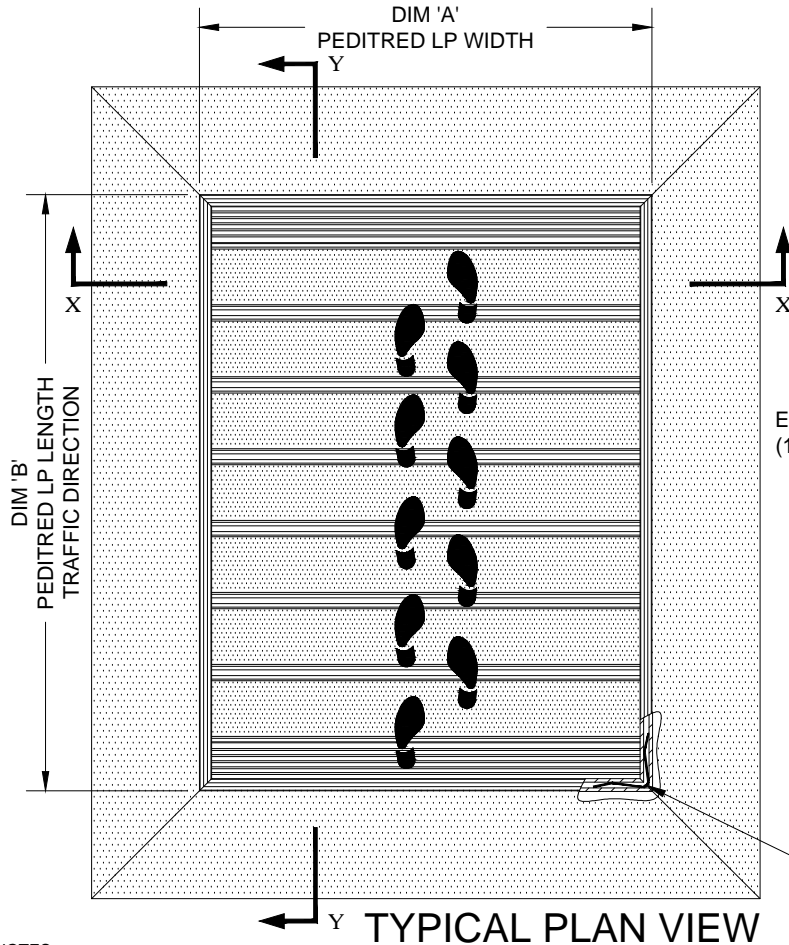
CATALOG NUMBER: G3

PART NUMBER:

NO.	REVISION	DATE	BY
NO.	F&F RELEASE	DATE	BY

					
RECYCLED RUBBER	EXTERIOR CARPET	HEAVY-DUTY CARPET	VINYL	VINYL-ABRASIVE	POURED ABRASIVE INSERT
G3RR	G3EC	G3HC	G3V	G3VA	G3PA
19R001XXX	19C018XXX	19C010XXX	19V002XXX	19M001XXX	19A005XXX

PEDITRED INSERT STYLES



NOTES:

*ALL SURFACES IN CONTACT WITH MASONRY ARE TO RECEIVE A COAT OF ZINC CHROMATE PRIMER

*PLEASE VERIFY TRAFFIC DIRECTION


*PEDITRED LP SHALL BE ABLE TO SUPPORT A 750 LB. ROLLING LOAD.

*MAX. SINGLE GRID SIZE NOT TO EXCEED 12'-0" (3.66M) IN WIDTH (DIM "A") OR 100 SQUARE FEET

*ADDITIONAL SPECIFICATIONS ARE CONTAINED IN THE LATEST C/S CATALOG OR AT C-SGROUP.COM AND ARE CONSIDERED PART OF THIS TRANSMITTAL.

*SUPPLIED IN STANDARD MILL FINISH. (OPTIONAL FINISHES AVAILABLE AT ADDITIONAL COST)

PLEASE VERIFY ALL	QTY	MARK #	LOCATION	MODEL	DIM 'A' WIDTH	DIM 'B' LENGTH	FINISH	NOTES



6896 Route 405 Highway, Muncy PA 17756
(800) 233-8493 *Fax (570) 546-8892 www.c-sgroup.com

PROJECT: _____
LOCATION: _____
CONTRACTOR: _____
AGENT: _____ **SHT:** _____
DRG. BY: _____ **DATE:** _____ **JOB NO.:** _____