

PEDITRED LP WITH LEVEL BASE FRAME AND BURKMURCER







INSERT STYLE:

INSERT COLOR:

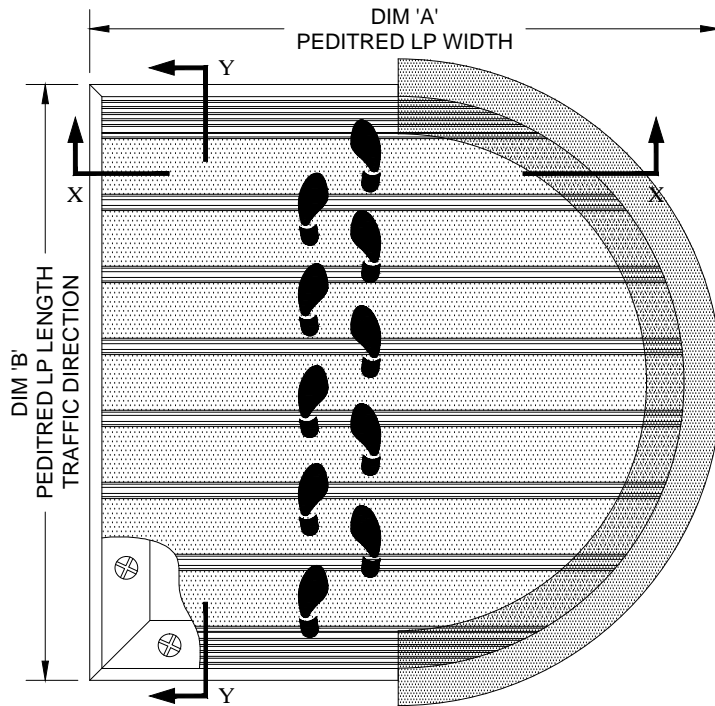
CATALOG NUMBER: G3

PART NUMBER:

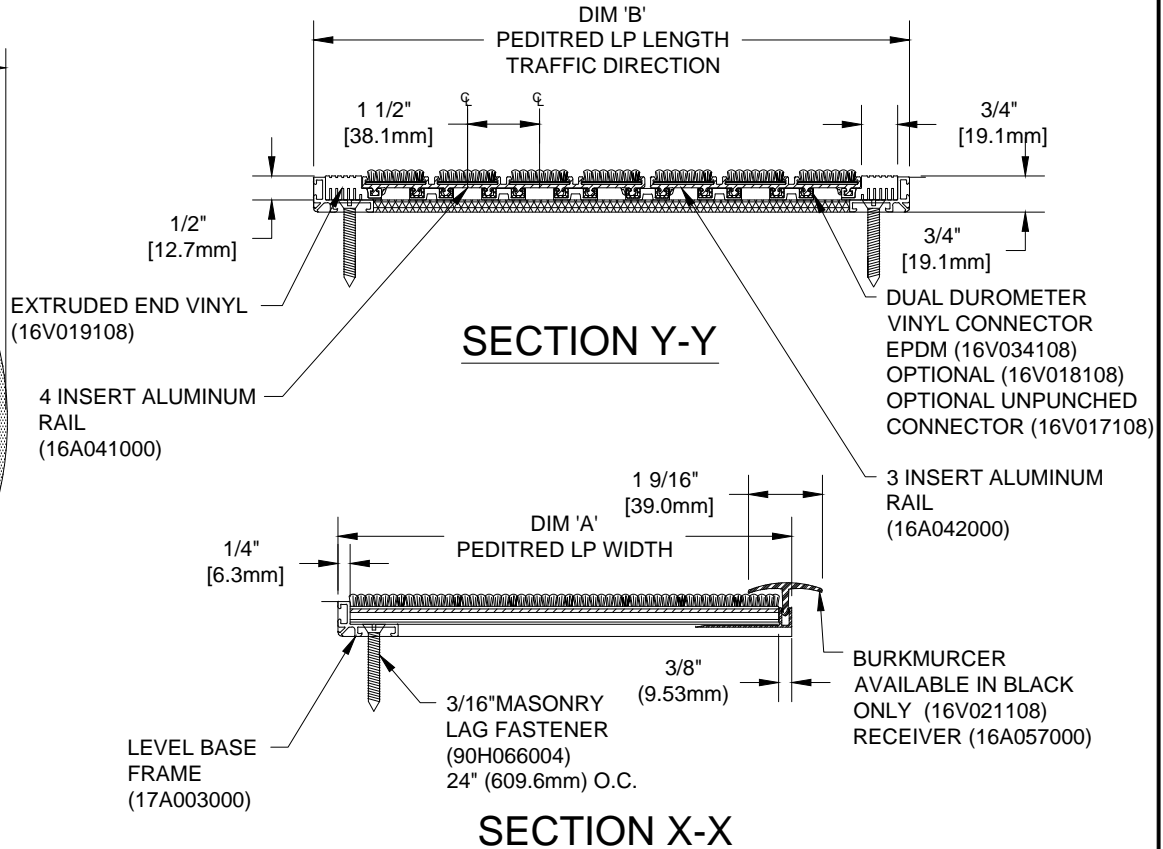
NO.	REVISION	DATE	BY
NO.	F&F RELEASE	DATE	BY

					
RECYCLED RUBBER	EXTERIOR CARPET	HEAVY-DUTY CARPET	VINYL	VINYL-ABRASIVE	POURED ABRASIVE INSERT
G3RR 19R001XXX	G3EC 19C018XXX	G3HC 19C010XXX	G3V 19V002XXX	G3VA 19M001XXX	G3PA 19A005XXX

PEDITRED INSERT STYLES



TYPICAL PLAN VIEW



SECTION Y-Y

SECTION X-X

NOTES:

*ALL SURFACES IN CONTACT WITH MASONRY ARE TO RECEIVE A COAT OF ZINC CHROMATE PRIMER
 *PLEASE VERIFY TRAFFIC DIRECTION
 *PEDITRED LP SHALL BE ABLE TO SUPPORT A 750 LB. ROLLING LOAD.

*MAX. SINGLE GRID SIZE NOT TO EXCEED 12'-0" (3.66M) IN WIDTH (DIM 'A') OR 100 SQUARE FEET
 *ADDITIONAL SPECIFICATIONS ARE CONTAINED IN THE LATEST C/S CATALOG OR AT C-SGROUP.COM AND ARE CONSIDERED PART OF THIS TRANSMITTAL.

*SUPPLIED IN STANDARD MILL FINISH. (OPTIONAL FINISHES AVAILABLE AT ADDITIONAL COST)

CS Construction Specialties
 6696 Route 405 Highway, Muncy PA 17756
 (800) 233-8463 Fax (570) 546-8992 www.c-sgroup.com

PLEASE VERIFY ALL	QTY	MARK #	LOCATION	MODEL	DIM 'A' WIDTH	DIM 'B' LENGTH	FINISH	NOTES

PROJECT:		
LOCATION:		
CONTRACTOR:		
AGENT:		SHT:
DRG. BY:	DATE:	JOB NO.: