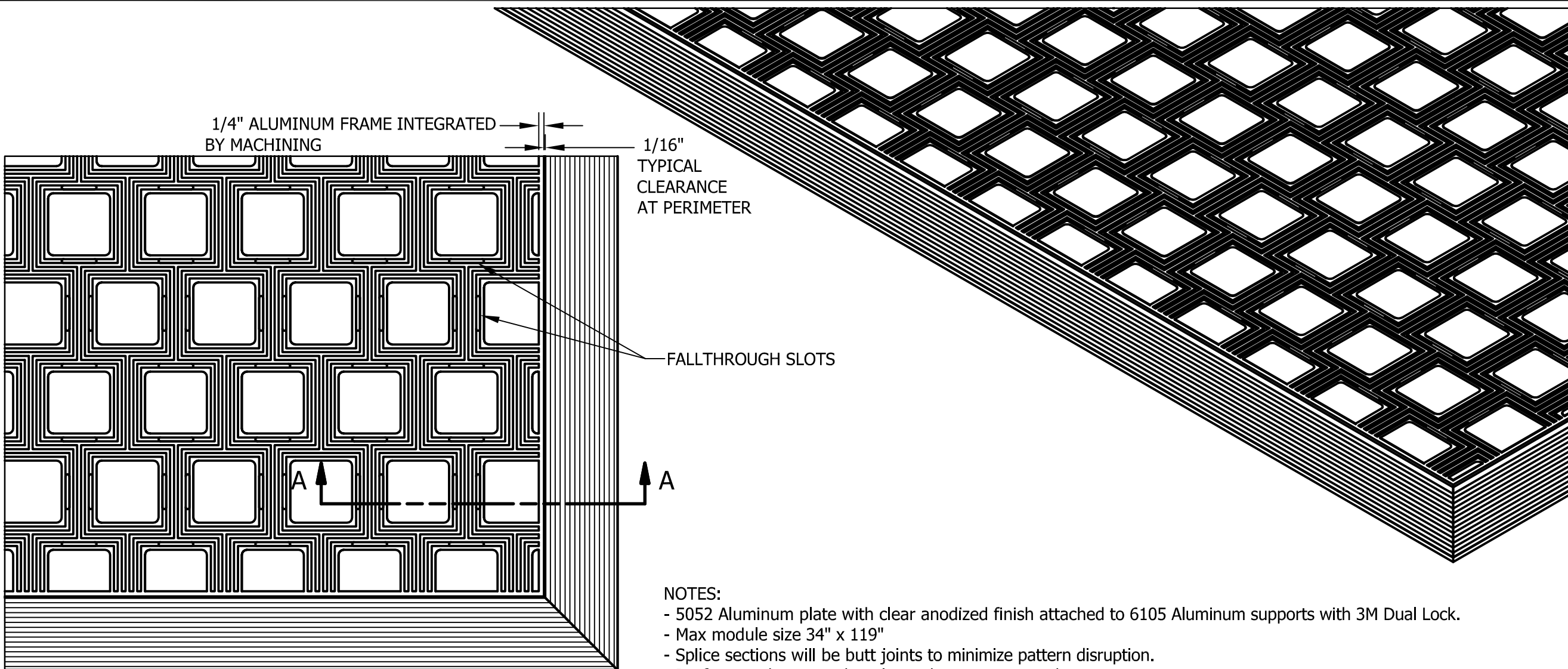


FLOORMOUNTS 3/4" SURFACE MOUNT

NO.	REVISION	DATE	BY
NO.	F&F RELEASE	DATE	BY

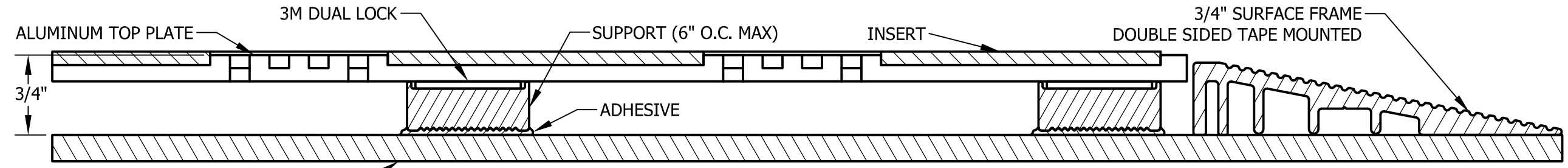
PATTERN: KINETIC INSERT COLOR: CATALOG NUMBER: PART NUMBER:



- NOTES:
- 5052 Aluminum plate with clear anodized finish attached to 6105 Aluminum supports with 3M Dual Lock.
 - Max module size 34" x 119"
 - Splice sections will be butt joints to minimize pattern disruption.
 - Drafting to determine best layout/sections required.
 - Static Coefficient of Friction .5 per ASTM D-2047
 - 300 lb. per wheel rolling load
 - Max deflection of .022" under 300 PSI load.

PLAN VIEW
SCALE 1:5

SECTION A-A
SCALE 1:1



CS Construction Specialties™
 6696 Route 405 Highway, Muncy PA 17756
 (800) 233-8493 • Fax (570) 546-4692 • www.csgroup.com

PLEASE VERIFY ALL	QTY	MARK #	LOCATION	MODEL	DIM 'A' WIDTH	DIM 'B' LENGTH	FINISH	REMARKS

PROJECT:		
LOCATION:		
CONTRACTOR:		
AGENT:		SHT:
DRG. BY:	DATE:	JOB NO.: