

# ACROVYN<sup>®</sup> INTERIORS

## Renaissance Wood Wall Panel Adhesive Mount

# INSTALLATION INSTRUCTIONS

**ALLOW MATERIAL TO ADJUST TO ROOM TEMPERATURE (MIN. 24 HOURS) PRIOR TO BEGINNING THE INSTALLATION**

Refer to MSDS for disposal of extra adhesive.

If there are any doubts or concerns about the installation, perform a trial installation prior to beginning the project.

Should you have any questions regarding the installation, in the USA please call the factory at (800) 233-8493, and in Canada (888) 895-8955.

## DO's & DON'Ts

**DO read all instructions for adhesives and installation procedures, prior to beginning installation.**

**DO make sure materials are kept flat, clean and in a dry area before acclimating them.**

**DO make sure materials are acclimated in an environment of 65°F - 75°F (18°C - 24°C) for at least 24 hours prior to beginning the installation.**

**DO maintain panel orientation throughout the entire installation.**

**DO wipe the back of the wall panel with a clean, damp cloth before installation, to remove any dust and dirt.**

**DO wipe the wall to remove any dust or dirt.**

**DON'T install Renaissance Wall Panels when room temperature is below 65°F (18°C) or above 75°F (24°C).**

**DON'T use Methyl Ethyl Ketone (MEK) or any similar solvents to clean Renaissance Wall Panel surfaces.**

**DON'T use Scotch-Brite pads, steel wool or similar cleaning pads on Renaissance Wall Panels.**

**DON'T store or stand panels on end.**

## REQUIRED TOOLS AND EQUIPMENT

### BY CONTRACTOR

- 4'-0" or 6'-0" Level
- Tape Measure
- Table Saw Whenever Available
- Circular Saw (w/ carbide tooth blade)
- Straight Edge or Guide for use with Circular Saw
- Jigsaw (w/ carbide tooth blade)
- Power Miter Saw\* (w/ carbide tooth blade)
- \*For use when installing wainscot molding*
- 29 oz. Caulking Gun

### BY C/S GROUP

- Renaissance Wall Panels
- M-1 Structural Adhesive/Sealant
- Color matched Stain and Fil-Stik

## I. INSPECTION, STORAGE AND HANDLING OF SHIPMENT

Inspect all materials for damage or missing parts. If you discover damaged or missing materials, in the USA please notify the factory at (800) 233-8493, and in Canada (888) 895-8955.

**Important!** All wall panels must be stored flat in a dry area.

Acclimate the wall panels for at least 24 hours prior to installation by allowing materials to adjust to room temperature and relative humidity.

## II. WALL PREPARATION

If the existing wall finish is wallpaper, heavy gauge sheet, linoleum or a similar material, it should be inspected for loose areas. If loose areas are discovered they should be removed, nailed or stapled securely to maintain proper adhesion.

All new or existing wall substrates should be examined, clean, smooth, dry, and free of oils, loose paint and/or joint compound dust prior to installation.



## III. PANEL SIZING

All wall panel orders are shipped in stock sizes unless custom panels have been specified.<sup>1</sup> The wall panels should be cut using either a table saw or circular saw with a carbide tooth blade. Always use a straight edge or guide to insure straight cuts when using a circular saw. A jigsaw should be used when making cutouts such as electrical outlets, fire extinguisher cabinets, etc. Always cut so that the blade rotates into the finished side of the panel or backside up.

Measurements should be taken from doorframe to doorframe, door frame to inside corner, inside corner to inside corner, etc. Refer to the back page for deduction allowances

Whenever possible use cut edges at the beginning or end of a run unless butting against a prefabricated outside corner.<sup>2</sup> Refrain from using cut edges at a joint between panels as much as possible.

It is recommended that multi-panel runs have equal end pieces. Verify panel locations on the project drawings if available.

<sup>1</sup> If the project calls for custom panels, accurate field dimensions are required in order to produce the panels correctly. Unless other arrangements are made it will be the responsibility of the contractor to provide the dimensions.

<sup>2</sup> When butting against a factory manufactured outside corner it is suggested that you start with a full panel that has a factory edge and continue with full width panels for the entire run. The last panel should be cut to size as required. If that is not acceptable be certain that the field edge is cut straight using a table saw or circular saw with a guide and finish the cut edge with color matched stain.

## IV. INSTALLATION

### STARTING PROCEDURE

If the installation is full height, establish a plumb line at the edge of the first panel.<sup>3</sup> This will serve as a starting point for material to be installed on that wall and ensure that all remaining panels will be plumb. A plumb line should be established at the beginning of each new run of material.

<sup>3</sup> Determining where the first plumb line is located will be the responsibility of the installer. Project drawings, if available, should be reviewed in case joint locations have already been predetermined.

Otherwise it is suggested that the center of the wall be the starting point for panel installation. Panels can then be installed from the center, working outward providing for end panels that are of an equal dimension.

If a wall has a prefabricated outside corner, the corner should be installed plumb and the remaining panels should be installed starting with the corner.



## PANEL PREPARATION

Starting at the end of a run, cut the first panel to size and make any necessary cutouts. Dry fit the panel prior to applying the adhesive. Place the panel face down on a worktable, while protecting the finished surface, and wipe the back with a clean damp cloth to remove any dust and dirt.

## ADHESIVE APPLICATION

Apply a ¼" bead of construction adhesive to the panel. Apply the adhesive on 18" [458 mm] to 20" [508 mm] centers and around the entire perimeter maintaining a maximum 1" space from the edge. One 28-oz. tube will cover 80-ft<sup>2</sup> [7.4 M<sup>2</sup>] of panel. The bead size should be increased on uneven substrates to insure adhesion.

**NOTE:** Install the panel immediately to prevent the adhesive from "skinning over." You must follow the instructions to get full adhesion.



## PANEL INSTALLATION

Align the panel with the level or plumb line established earlier. Once positioned, install the panel to substrate by pushing it against the wall with even pressure, ensuring full adhesive transfer.

**IMMEDIATELY PEEL BACK THE PANEL TO "GAS-OFF" THE ADHESIVE IN ORDER TO IMPROVE ADHESION**, then reposition the panel right away. This quickens the adhesive cure time and serves as a check to see if the adhesive has transferred to the wall substrate.

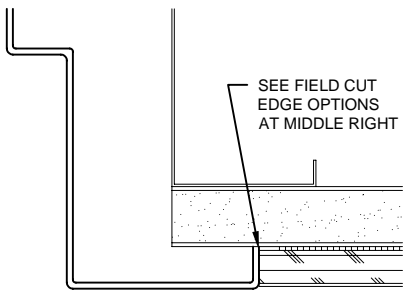
Immediately remove any adhesive from the panel that may have accidentally gotten on the Acrovyn using isopropyl alcohol, mineral spirits or diluted acetone.

Trim screws or finishing nails may be used to secure the panel in place but must be concealed using a color matched Fil-Stik.

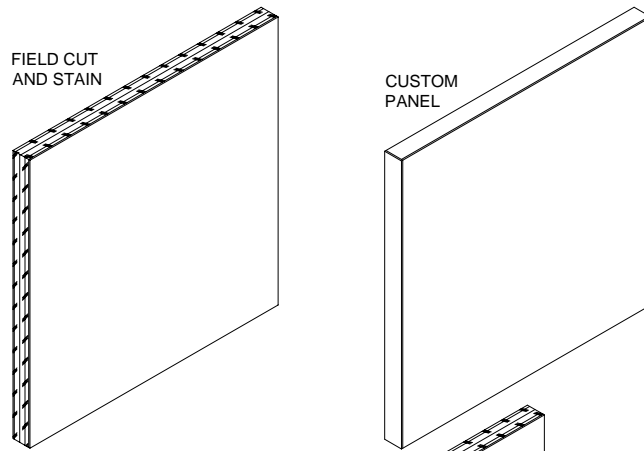
## CLEAN UP

Examine all joints and cutouts to ensure that all excess adhesive has been removed. Alcohol, mineral spirits, acetone or turpentine can be used to remove excess adhesive.

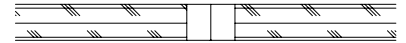




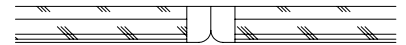
FIELD CUT EDGE CONDITION



STANDARD VENEER EDGE



OPTIONAL SQUARE LUMBER EDGE



OPTIONAL RADIUS LUMBER EDGE

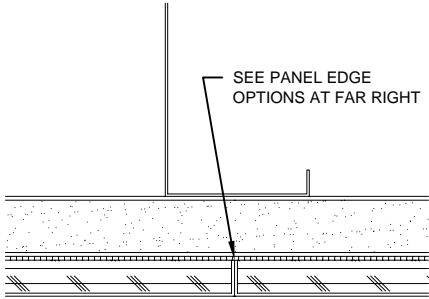


OPTIONAL BEVELED LUMBER EDGE

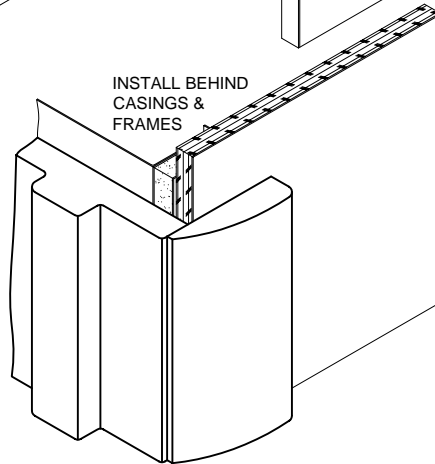


OPTIONAL SURFACE MOUNT VERTICAL TRIM

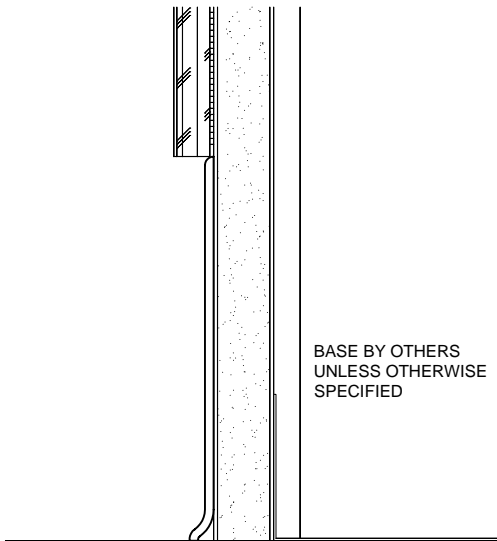
STD. & OPTIONAL PANEL EDGES



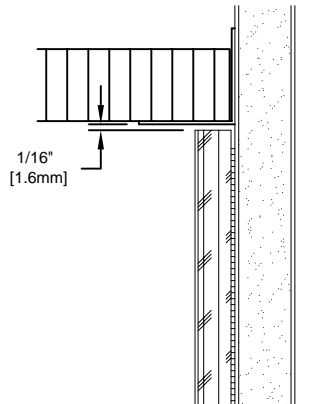
TYPICAL BUTT JOINT CONDITION



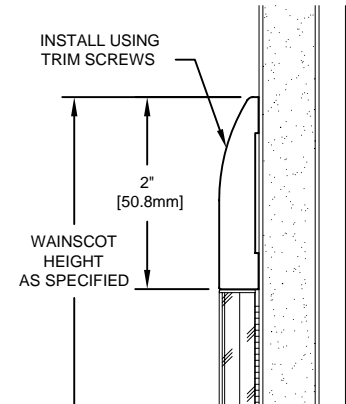
FIELD CUT EDGE OPTIONS



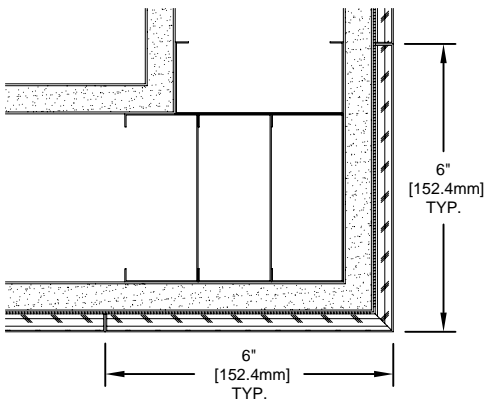
TYP. BASE CONDITION



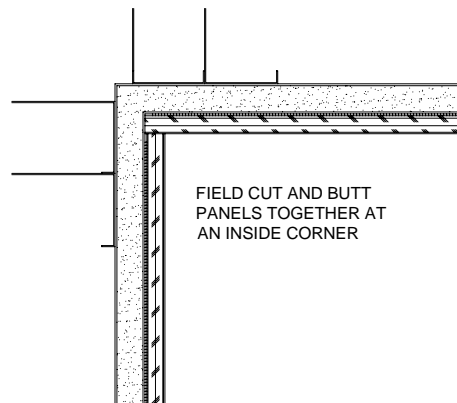
TYP. CEILING CONDITION



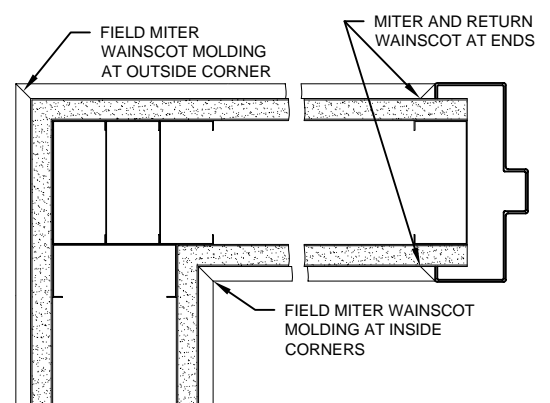
TYP. WAINSCOT CONDITION



TYP. OUTSIDE CORNER CONDITION



TYP. INSIDE CORNER CONDITION



TYP. WAINSCOT MOLDING AT I.S., O.S CORNERS AND ENDS  
1/16/08

CONSTRUCTION SPECIALTIES INC  
DECOGARD PRODUCTS

MUNCY, PENNSYLVANIA 17756  
MISSISSAUGA ONTARIO L5E 2C2

A Member of the  
**CSGROUP**  
of Companies

This document is the property of Construction Specialties, Inc. and contains CONFIDENTIAL PROPRIETARY INFORMATION that is not to be disclosed to third parties and is not to be used without approval in writing from Construction Specialties, Inc.

FOR FURTHER ASSISTANCE CALL (800) 233-8493 OR FAX (570) 546-5169 OR IN CANADA CALL (888) 895-8955 OR FAX (905) 274-6241