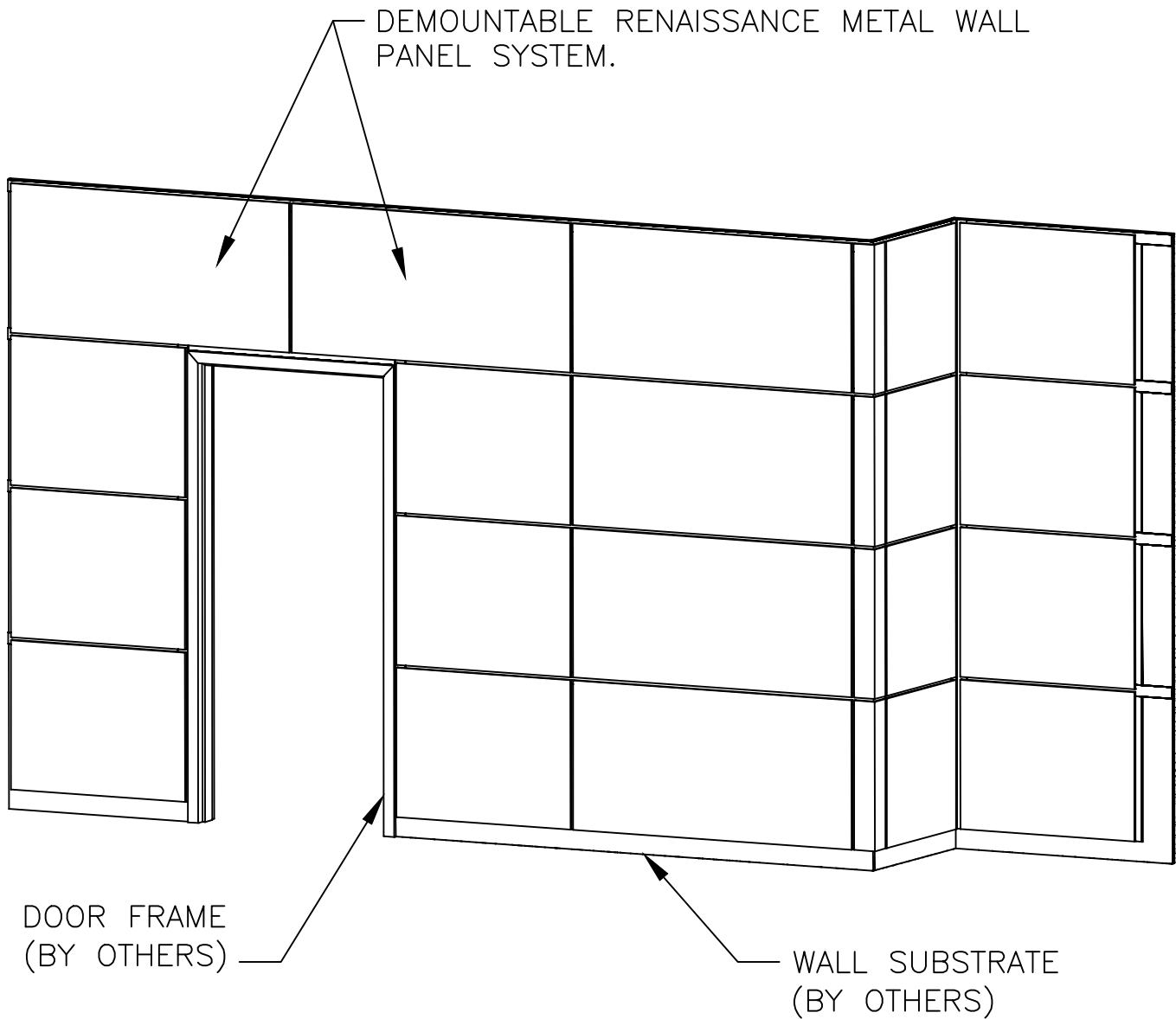


*Model: DEMOUNTABLE Z-CLIP
METAL WALL PANEL SYSTEM*



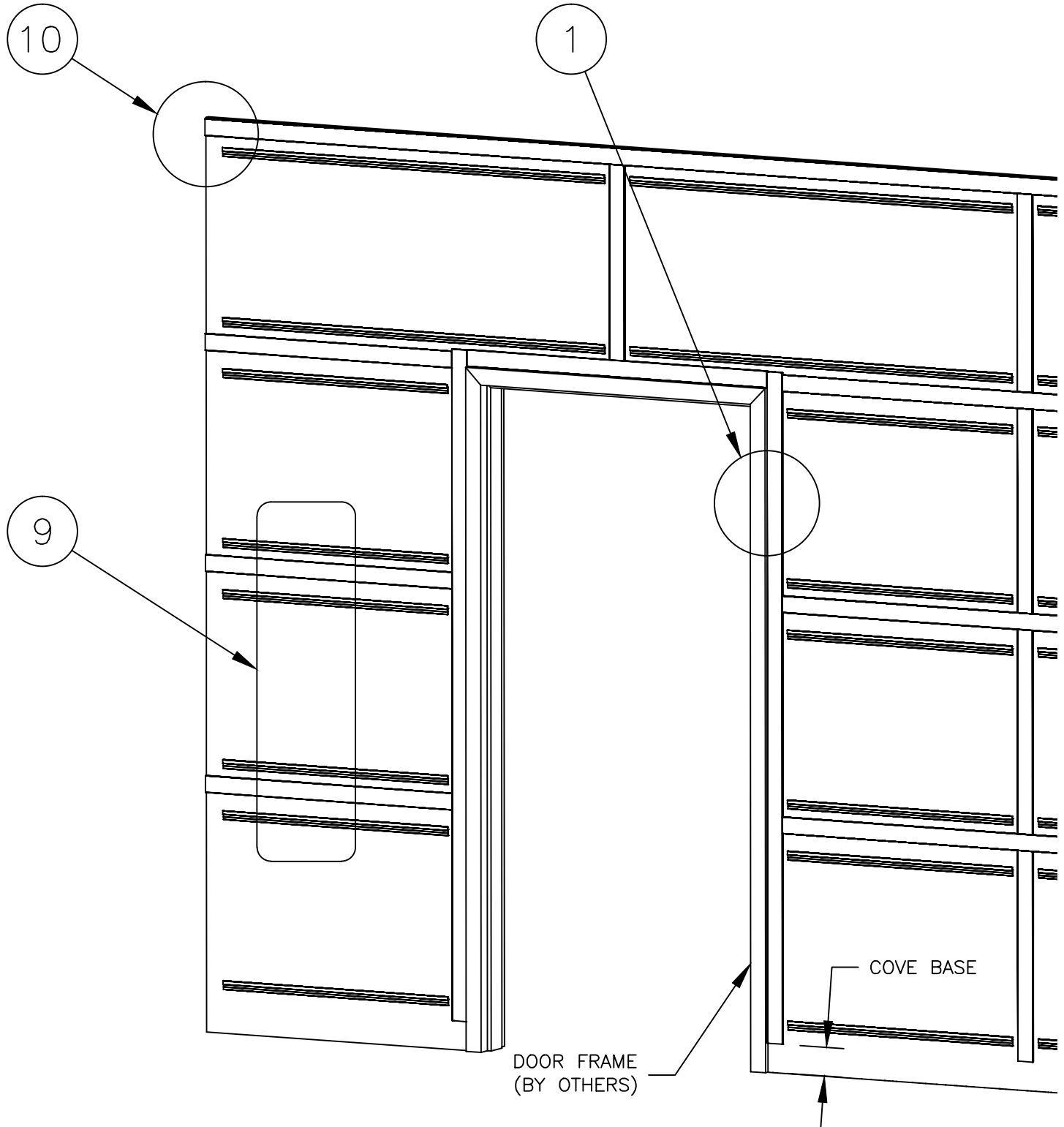
NOTES:

1. MATERIALS MUST REACH 65°F (18°C) MIN TO 75°F (24°C) MAX 24 HOURS PRIOR TO INSTALLATION. THIS IS ESSENTIAL TO MINIMIZE EXPANSION AND CONTRACTION OF MATERIAL.
2. FOR DRYWALL/PLASTER WALL CONSTRUCTION, IT IS RECOMMENDED FOR FASTENERS TO BE ENGAGED INTO METAL/WOOD STUDS TO MAINTAIN MAXIMUM PULL-OUT STRENGTH.

WALL CONDITION	SPECIFIED FASTENER	DRILL DIAMETERS		C/S PART NUMBER
		WALL	RETAINER	
STEEL STUD/GYPSUM WALL	#6 X 1 5/8" BUGLE HEAD SHEET METAL SCREW	N/A	3/16"	90H079002
CONCRETE/CONC. BLOCK	#10 X 1 1/2" PHILLIPS PAN HEAD SMS AF-6 PLASTIC ANCHORS	1/4"	9/32"	90H189002 90H039004
WOOD STUD/GYPSUM WALL	#6 X 1 5/8" BUGLE HEAD SHEET METAL SCREWS	N/A	3/16"	90H079002

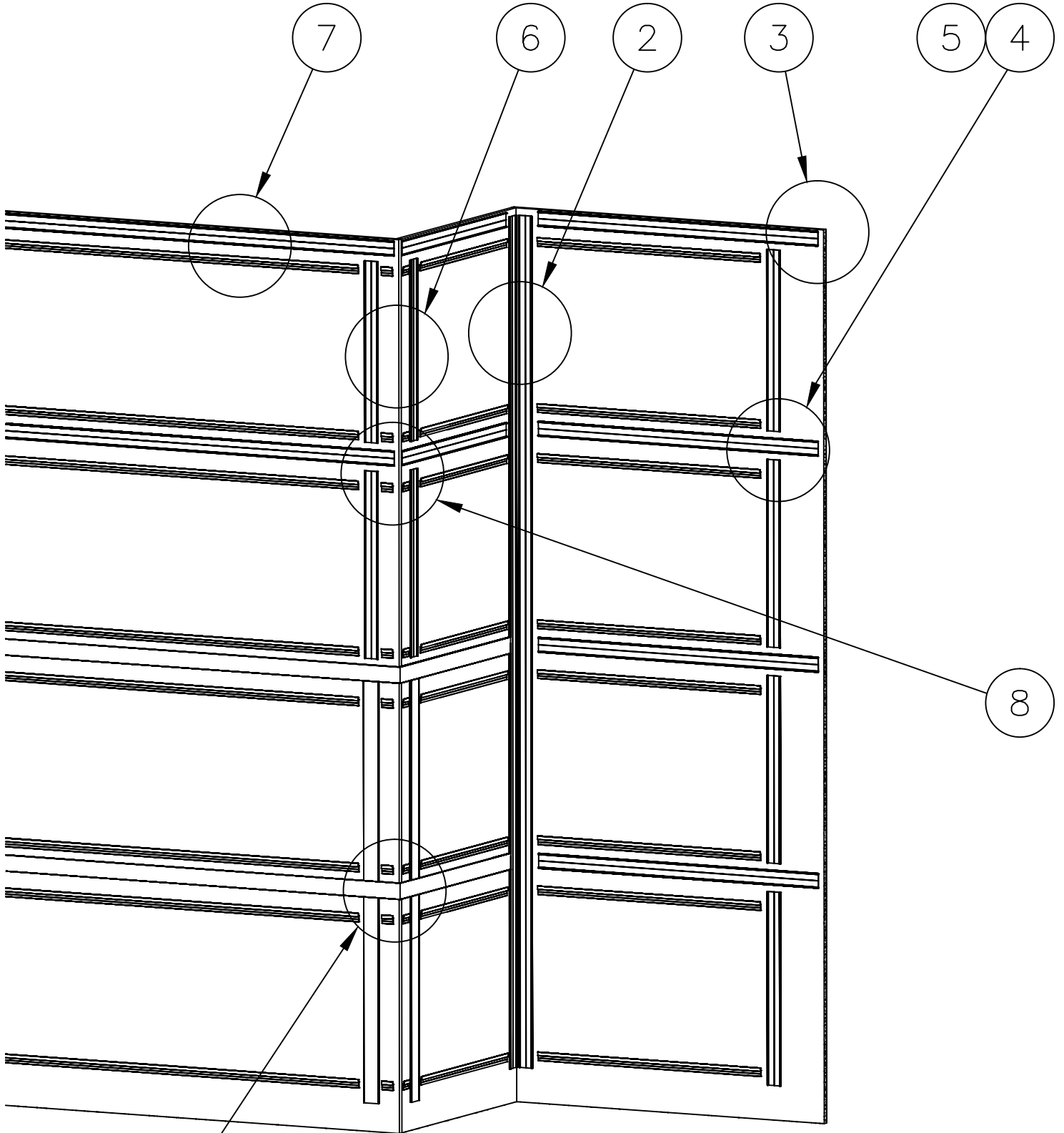
INSTALLATION INSTRUCTIONS

DEMOUNTABLE Z-CLIP METAL WALL PANEL SYSTEM



STEP 1:
MEASURE WALLS TO DETERMINE LAYOUT AND PLACEMENT OF WALL PANELS. THIS SYSTEM IS DESIGNED TO USE CUSTOM SIZE MANUFACTURED PANELS AT ALL DOORS, CORNERS, ETC.

REFER TO DRAFTING DETAILS FOR SPECIFIED REVEAL WIDTH AND WALL MOUNTING CLIP LOCATION.



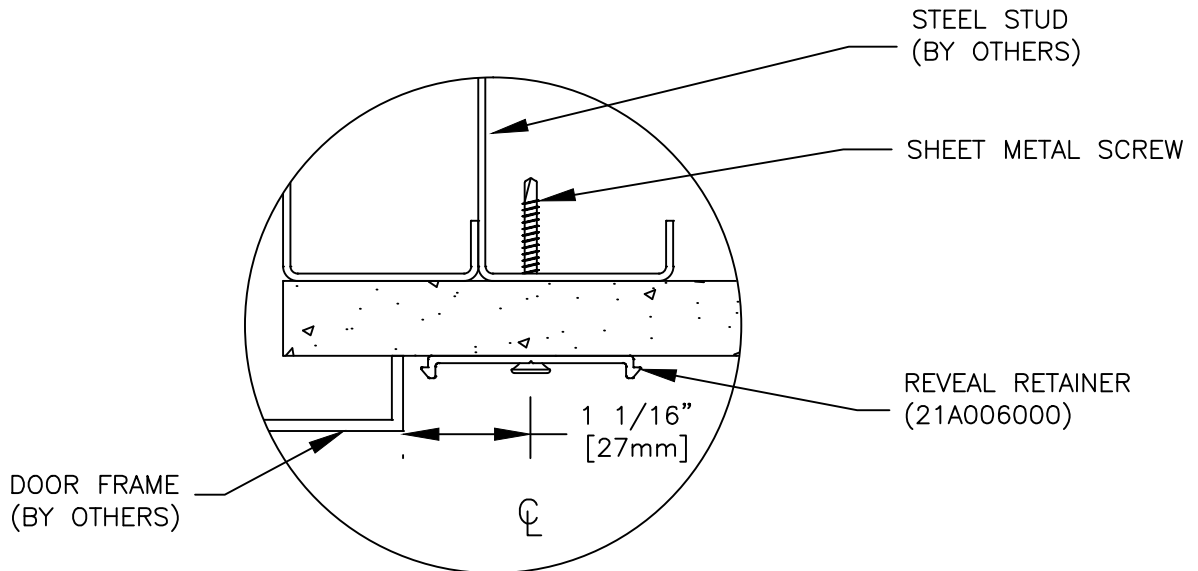
TYPICAL WALL INSTALLATION.

NOTE: NUMBERS POINTING TO AREAS OF THE DRAWING REFER TO DETAILS USED THROUGHOUT THE INSTRUCTIONS.

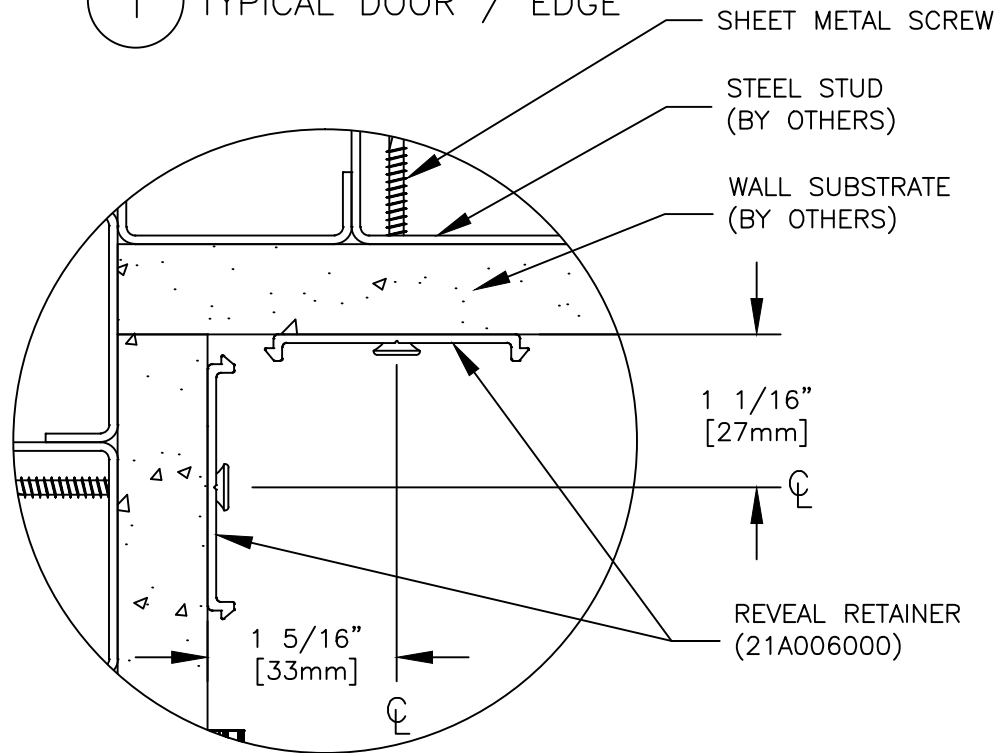
11

INSTALLATION INSTRUCTIONS

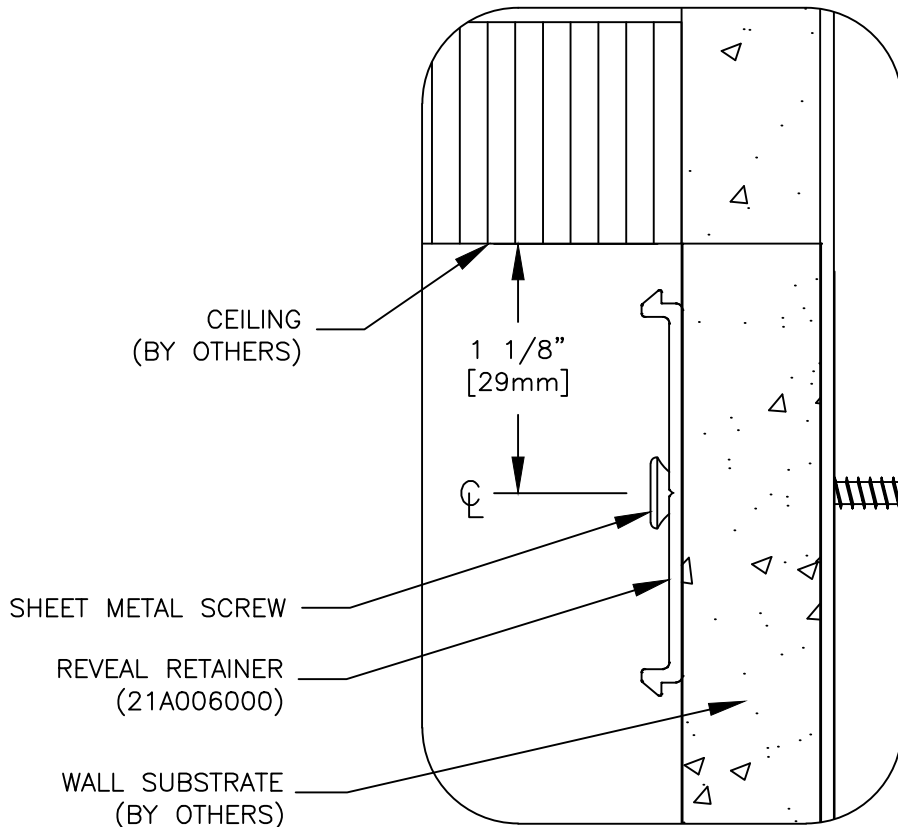
DEMOUNTABLE Z-CLIP METAL WALL PANEL SYSTEM



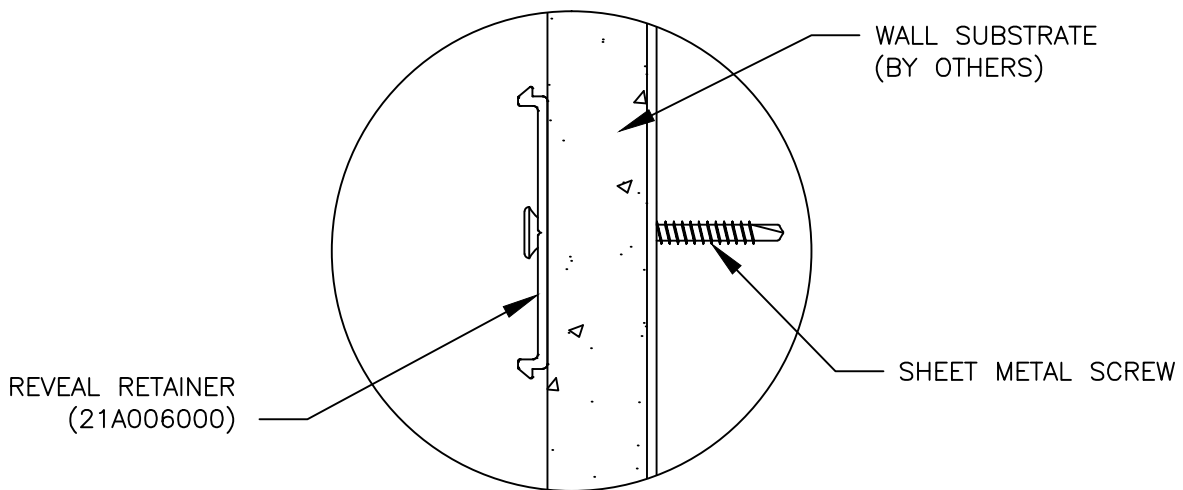
1 TYPICAL DOOR / EDGE



2 TYPICAL INSIDE CORNER



3 TYPICAL REVEAL RETAINER AT CEILING

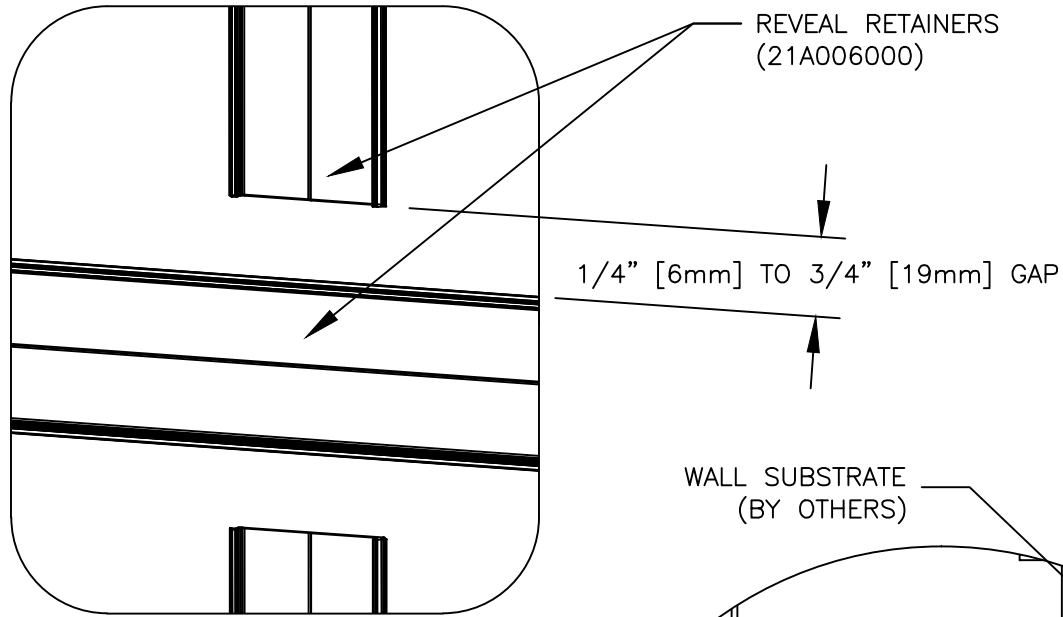


4 TYPICAL HORIZONTAL REVEAL RETAINER

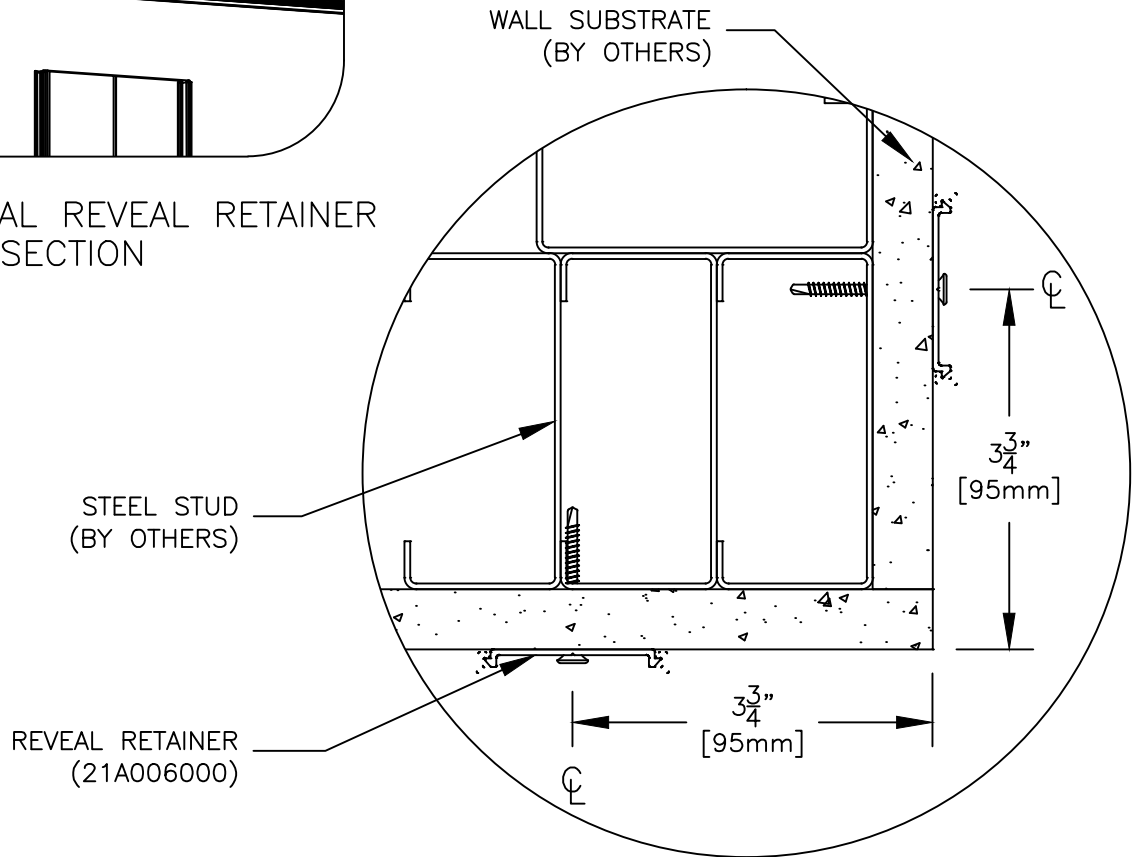
STEP 3:
 CUT TO SIZE AND INSTALL ALL HORIZONTAL ALUMINUM REVEAL RETAINERS. SEE DETAILS 3 AND 4. WARNING: BE SURE ALL PIECES ARE INSTALLED LEVEL. ALL ALUMINUM EXTRUSIONS HAVE A SMALL "V" GROOVE FOR LOCATING FASTENERS. NOTE: THE SPACING BETWEEN THE WALL PANELS AND REVEAL RETAINER LOCATION IS BASED ON A SPECIFIED REVEAL WIDTH SHOWN IN THE DRAFTING DETAILS. STANDARD WIDTHS ARE 3/8", 1/2", 5/8", 3/4" OR 1" (10mm, 13mm, 16mm, 19mm or 25mm).

INSTALLATION INSTRUCTIONS

DEMOUNTABLE Z-CLIP METAL WALL PANEL SYSTEM



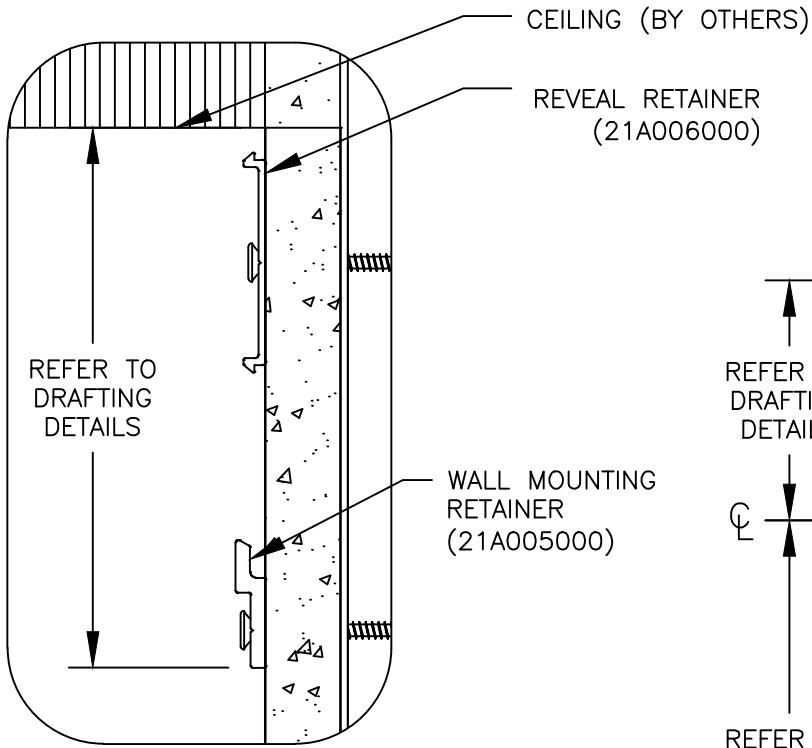
5 TYPICAL REVEAL RETAINER INTERSECTION



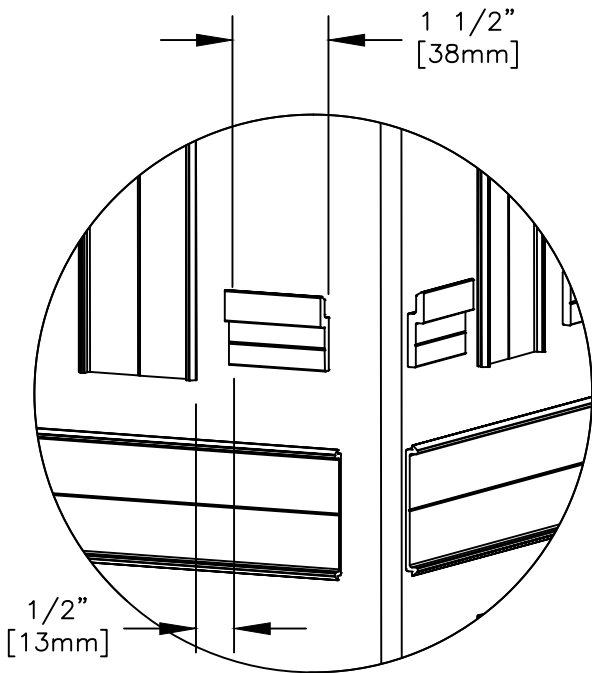
6 TYPICAL OUTSIDE CORNER

STEP 4:

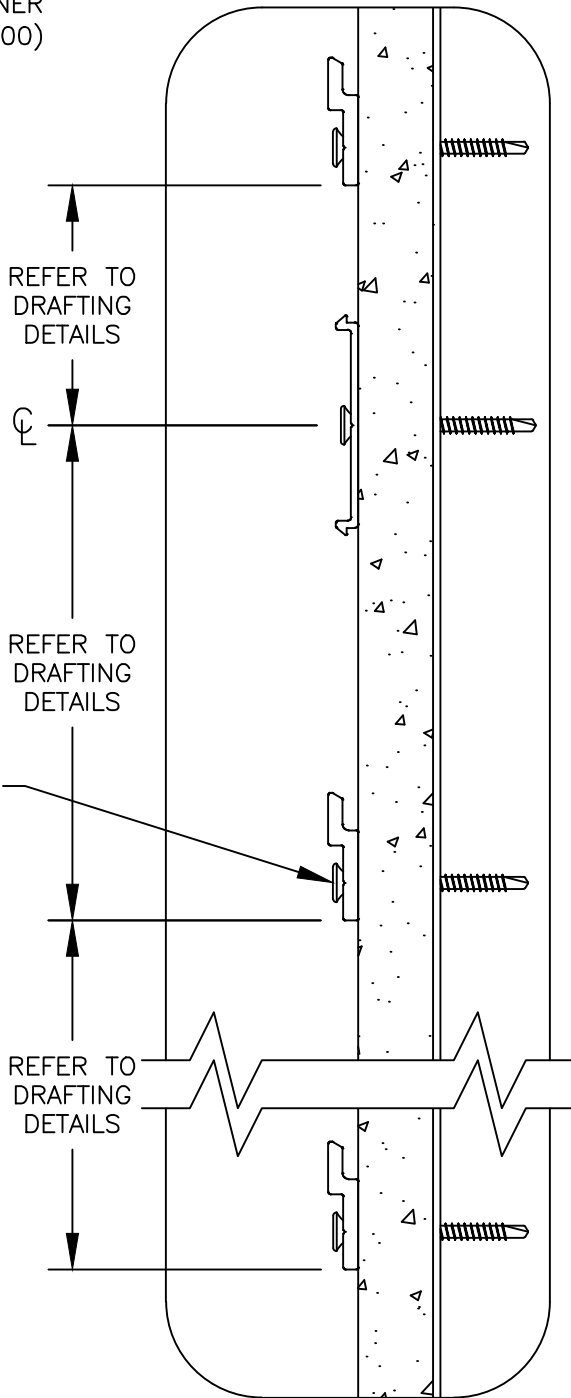
ONCE ALL HORIZONTAL REVEAL RETAINERS ARE IN PLACE, CUT TO SIZE AND INSTALL ALL VERTICAL ALUMINUM REVEAL RETAINERS. ALLOW A 1/4" (6mm) TO 3/4" (19mm) GAP BETWEEN ADJACENT ALUMINUM RETAINERS. SEE DETAILS 5 AND 6. WARNING: BE SURE ALL PIECES ARE INSTALLED PLUMB. ALL ALUMINUM EXTRUSIONS HAVE A SMALL "V" GROOVE FOR LOCATING FASTENERS.



7 REVEAL RETAINER AND WALL MOUNTING CLIP AT CEILING



8 REVEAL RETAINER AND WALL MOUNTING CLIP AT OUTSIDE CORNER



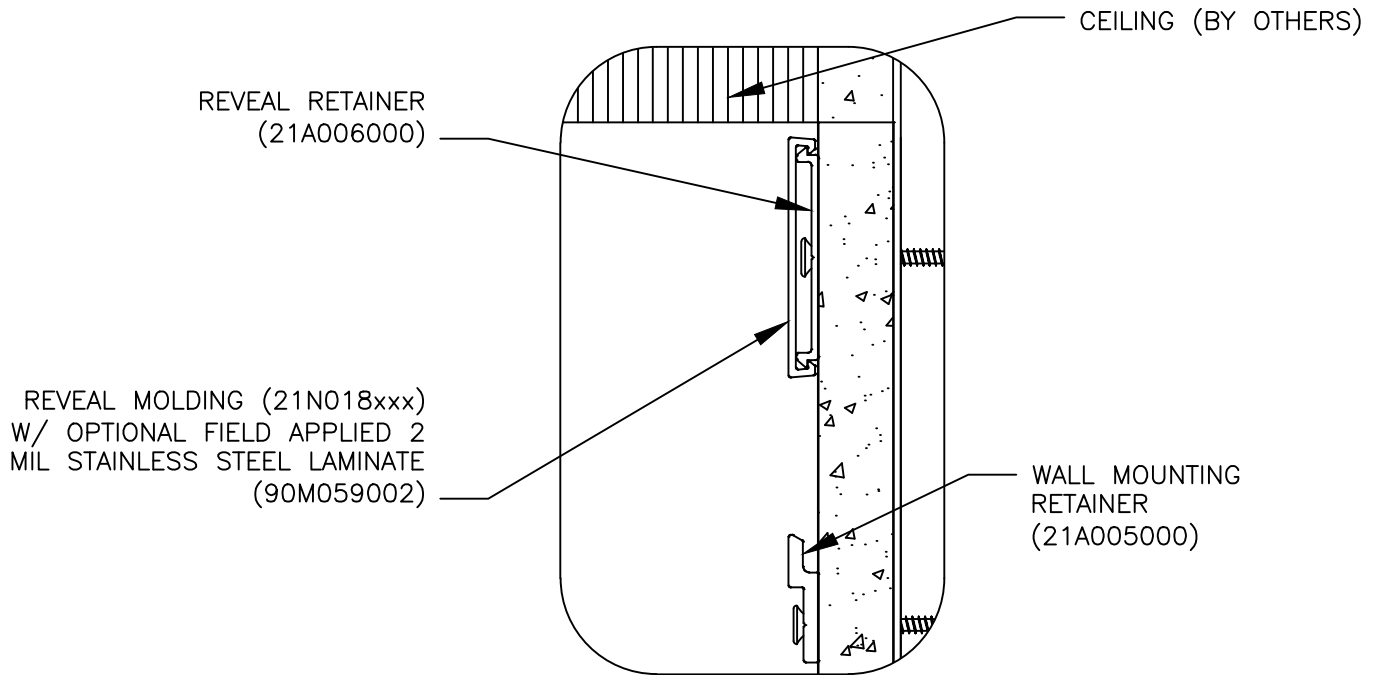
9 ALUMINUM WALL MOUNTING CLIPS AT FLOOR / BASE CONDITION

STEP 5:

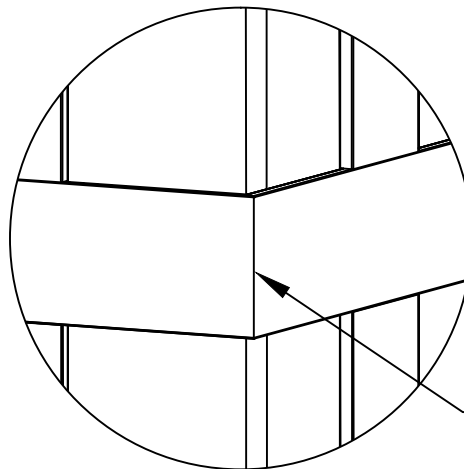
CUT TO SIZE AND INSTALL ALL WALL MOUNTING RETAINERS. SEE DETAILS 7, 8, AND 9. BE SURE ALL WALL MOUNTING RETAINERS ARE LEVEL. WARNING: THE LOCATION OF WALL MOUNTING RETAINERS IS CRITICAL TO A PROPERLY SPACED REVEAL WIDTH. BE SURE THESE RETAINERS ARE ATTACHED TO A STUD, BECAUSE THEY SUPPORT THE FULL WEIGHT OF THE WALL PANELS. ALL ALUMINUM EXTRUSIONS HAVE A SMALL "V" GROOVE FOR LOCATING FASTENERS.

INSTALLATION INSTRUCTIONS

DEMOUNTABLE Z-CLIP METAL WALL PANEL SYSTEM



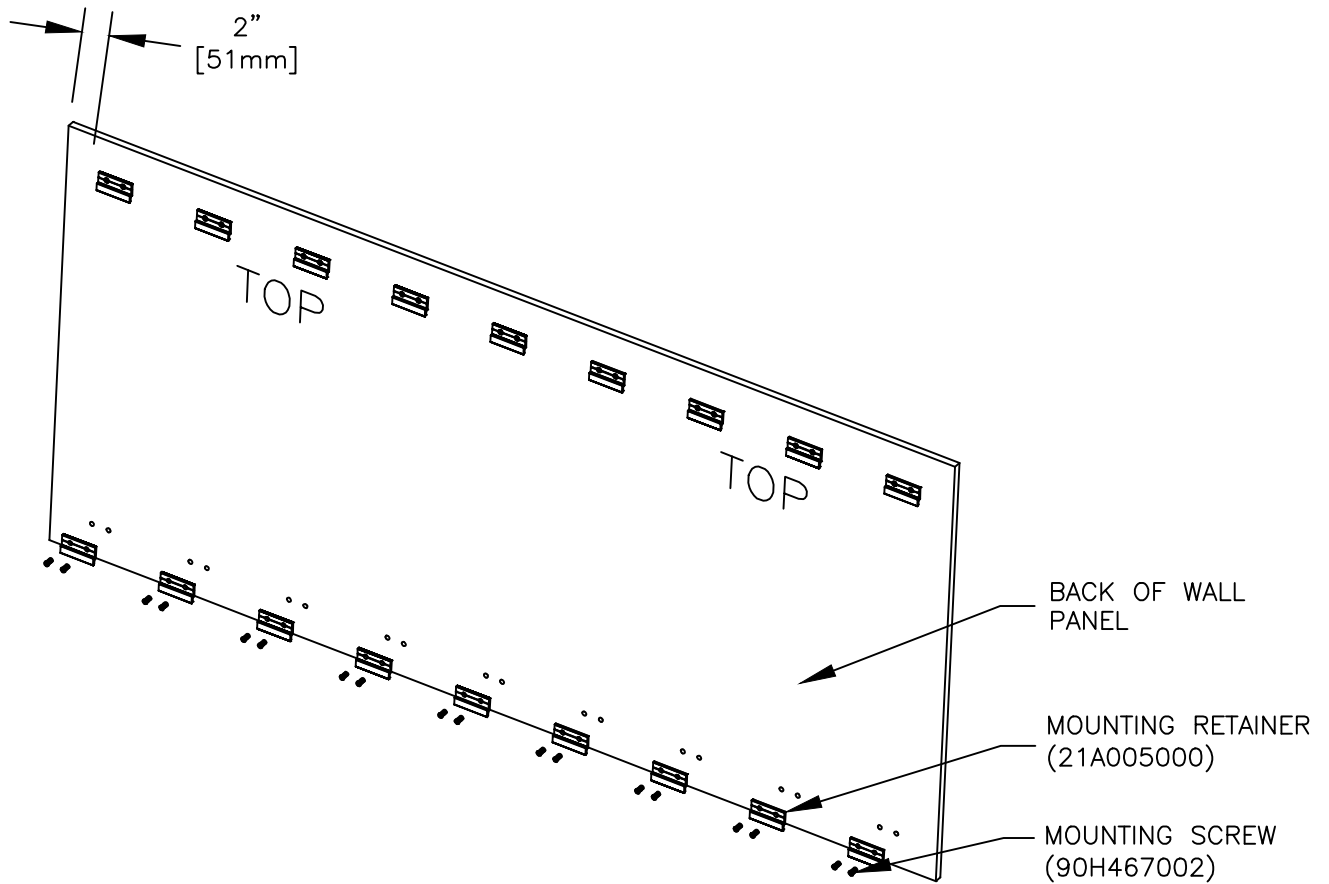
10 REVEAL RETAINER AND REVEAL MOLDING



11 MITERED REVEAL RETAINER AT CORNER

STEP 6:
CUT TO SIZE AND SNAP FIT REVEAL MOLDING ON ALL ALUMINUM RETAINERS AT EDGES AND INSIDE CORNERS.

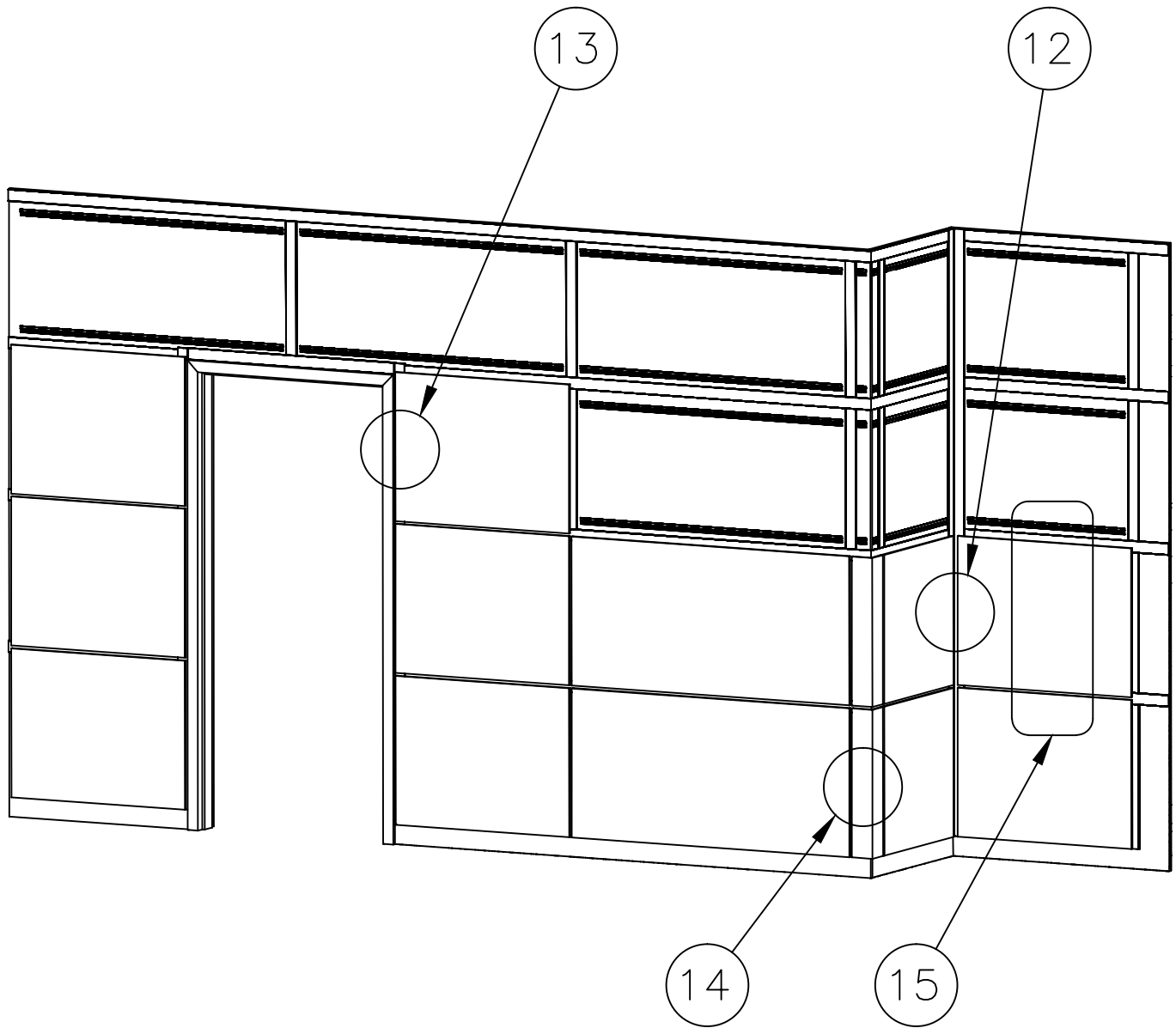
STEP 7:
CUT TO SIZE AND SNAP FIT ALL HORIZONTAL REVEAL MOLDINGS. ONCE ALL HORIZONTAL REVEAL MOLDINGS ARE INSTALLED THEN CUT TO SIZE AND SNAP FIT ALL VERTICAL MOLDINGS. SEE DETAILS 10 AND 11. NOTE: ALL REVEALS TO BE TIGHT AND SQUARE WHEN ENDING ADJACENT OTHER REVEAL MOLDING. IF THE OPTIONAL 2 MIL. STAINLESS STEEL LAMINATE IS REQUIRED, IT SHOULD BE INSTALLED AT THIS POINT BY REMOVING THE PROTECTIVE BACKING AND APPLYING IT TO THE REVEALS.



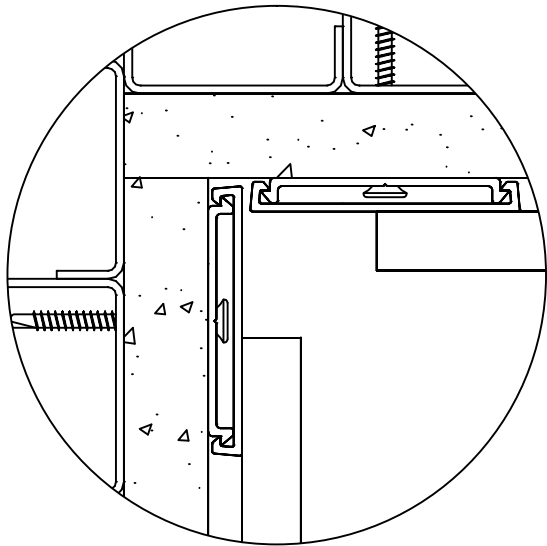
STEP 8:
ATTACH MOUNTING RETAINERS (21A005000) TO THE BACK OF EACH WALL PANEL USING C/S SUPPLIED MOUNTING SCREWS (90H467002). MOUNTING CLIPS SHOULD BE INSTALLED AT THE PREDRILLED LOCATIONS WHICH ARE TYPICALLY 6" O.C. BE SURE MOUNTING CLIPS ARE ORIENTED CORRECTLY BASED ON DRAFTING DETAILS.

INSTALLATION INSTRUCTIONS

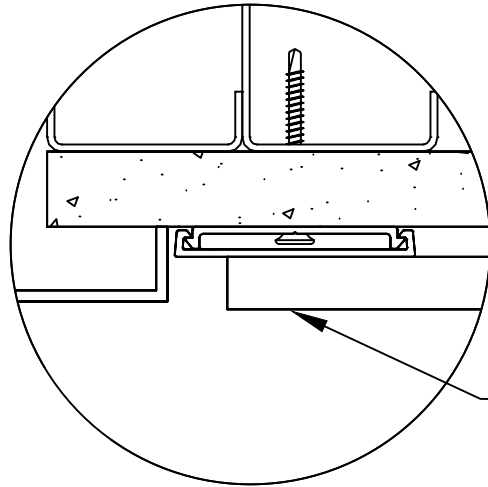
DEMOUNTABLE Z-CLIP METAL WALL PANEL SYSTEM



STEP 9:
INSTALL PANELS MAINTAINING THE SPECIFIED REVEAL WIDTH BETWEEN PANELS AND AT ALL END CONDITIONS AND INSIDE AND OUTSIDE CORNERS. SEE DETAILS 12, 13, 14 AND 15 (DETAIL 15 IS ON BACK COVER). ALL CUSTOM PANELS SHOULD BE NUMBERED REFLECTING THE PROPER LOCATION ON THE JOBSITE.

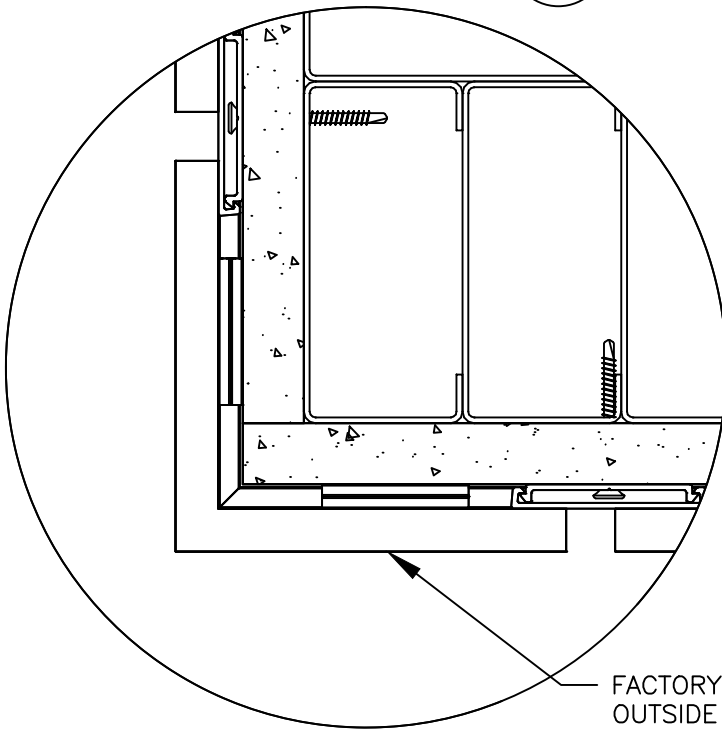


12 TYPICAL INSIDE CORNER CONDITION



CUSTOM SIZE PANEL

13 TYPICAL PANEL EDGE AT DOOR OR END CONDITION



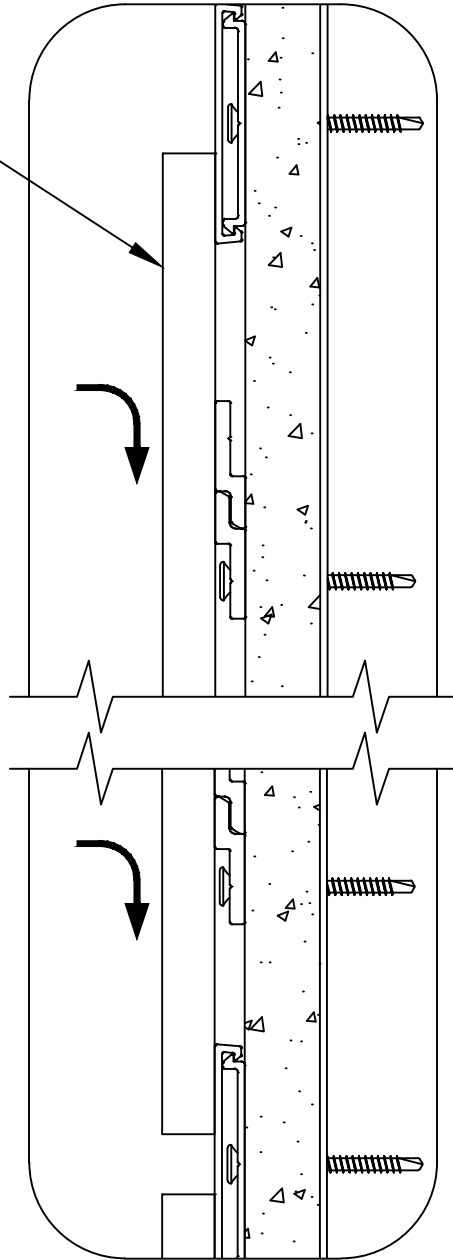
FACTORY ASSEMBLED
OUTSIDE CORNER,
INSTALLATION SIMILAR
TO PANELS

14 TYPICAL OUTSIDE CORNER

INSTALLATION INSTRUCTIONS

DEMOUNTABLE Z-CLIP METAL WALL PANEL SYSTEM

STAINLESS STEEL WALL PANEL
USING FACTORY SUPPLIED
PANEL MOUNTING CLIPS



15 MOUNTING OF
WALL PANEL

10/20/11