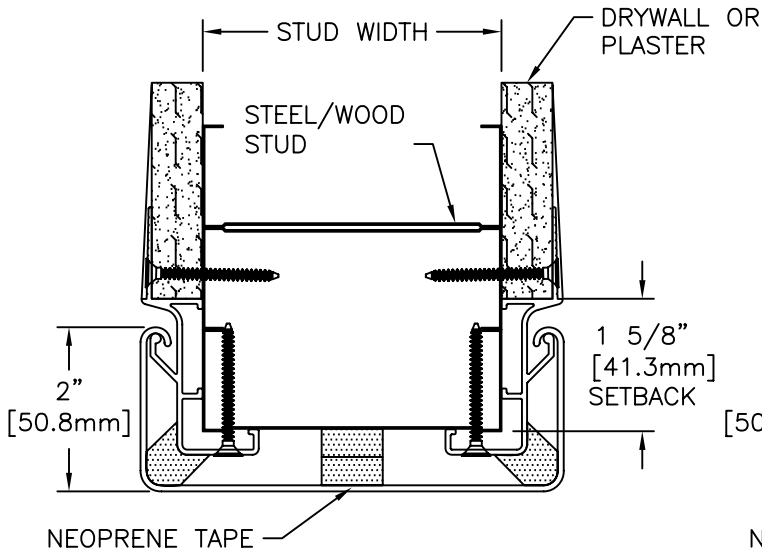
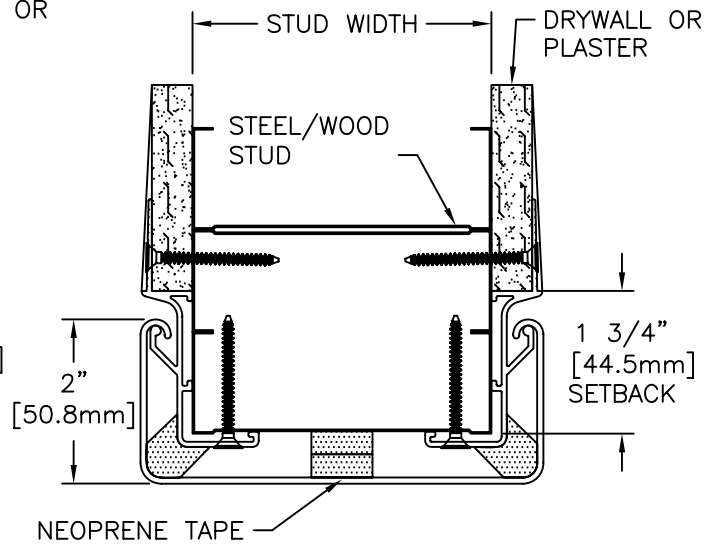


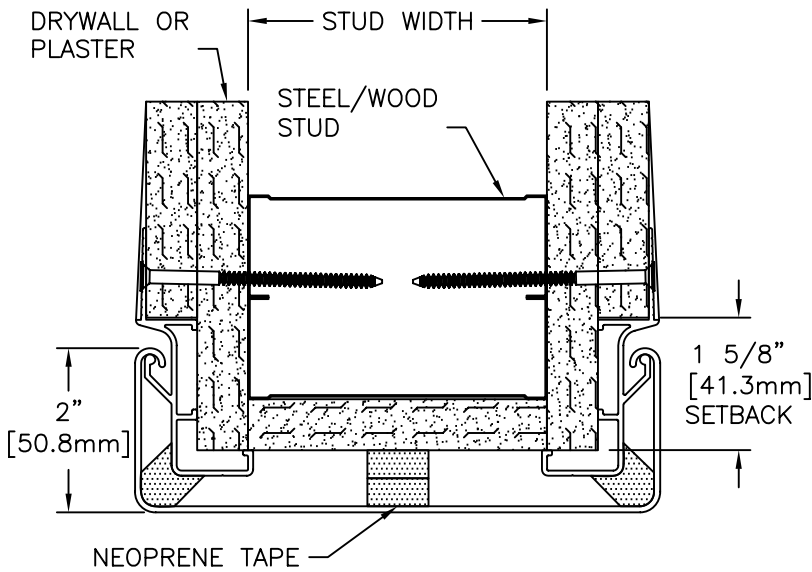
NOTE: MATERIAL MUST REACH 65°F MIN TO 75°F MAX 24 HOURS PRIOR TO INSTALLATION. THIS IS ESSENTIAL TO MINIMIZE EXPANSION AND CONTRACTION OF THE MATERIAL.



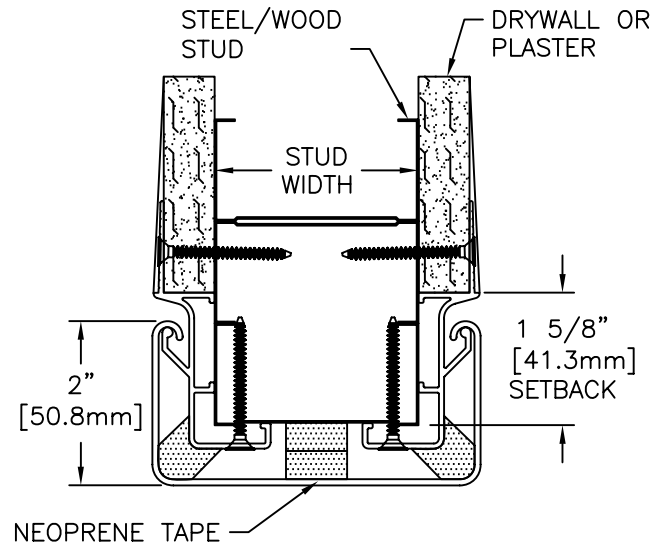
*FSC-25 (5/8" DRYWALL)*



*FSC-25 (1/2" DRYWALL)*



*FSC-25 (2 LAYERS OF 5/8" DRYWALL)*



*FSC-25 (2 1/2" STUD WALL and 5/8" DRYWALL)*

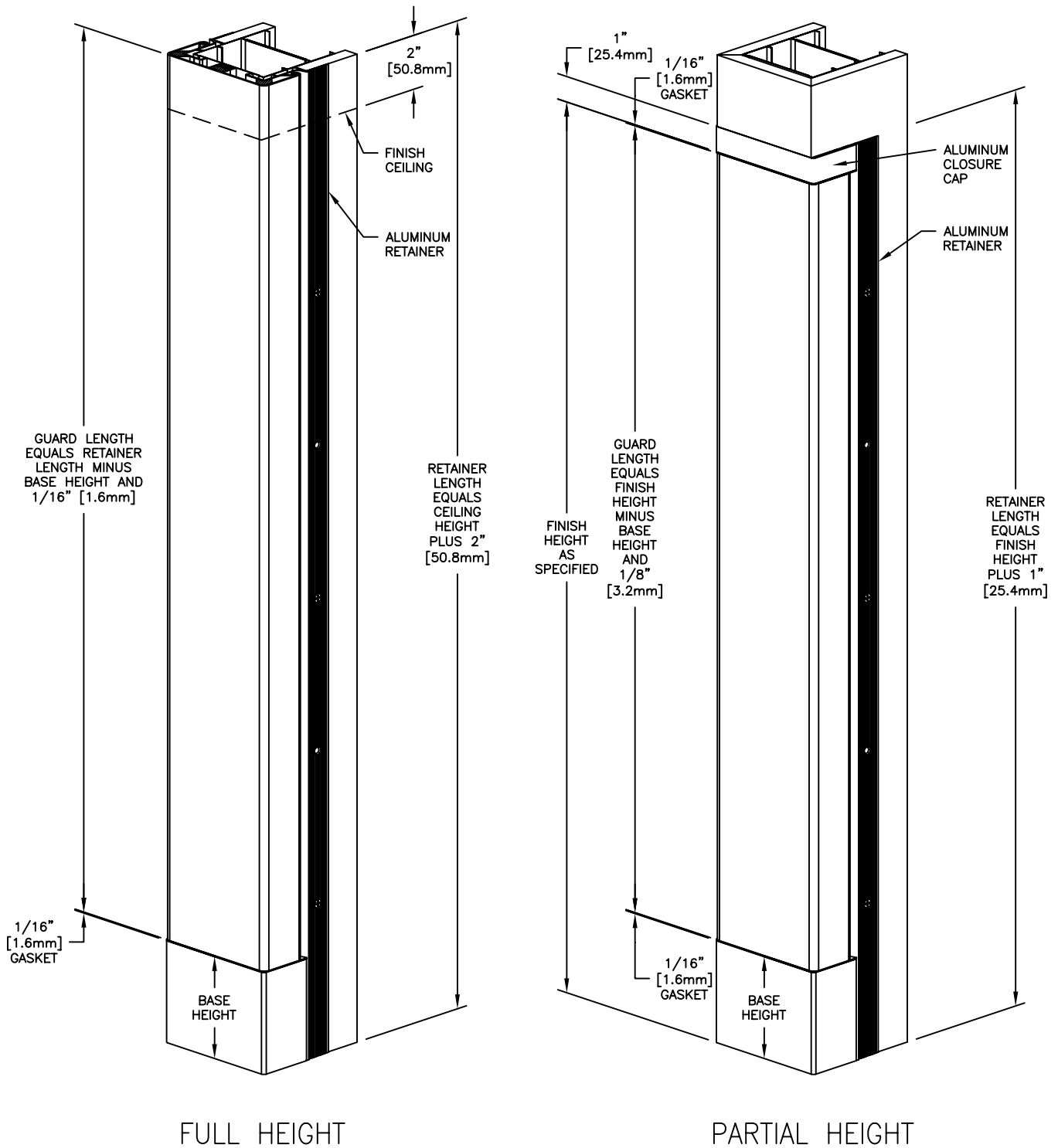
WALL CONDITION	SPECIFIED FASTENER	DRILL DIAMETERS		C/S PART NUMBER
		WALL	RETAINER	
SINGLE LAYER DRYWALL	#6 X 1-5/8" BUGLE HEAD SHEET METAL SCREW	N/A	N/A	90H079002
DOUBLE LAYER DRYWALL	#8 X 3" BUGLE HEAD SHEET METAL SCREW	N/A	N/A	90H090002

# INSTALLATION INSTRUCTIONS

FSC-25

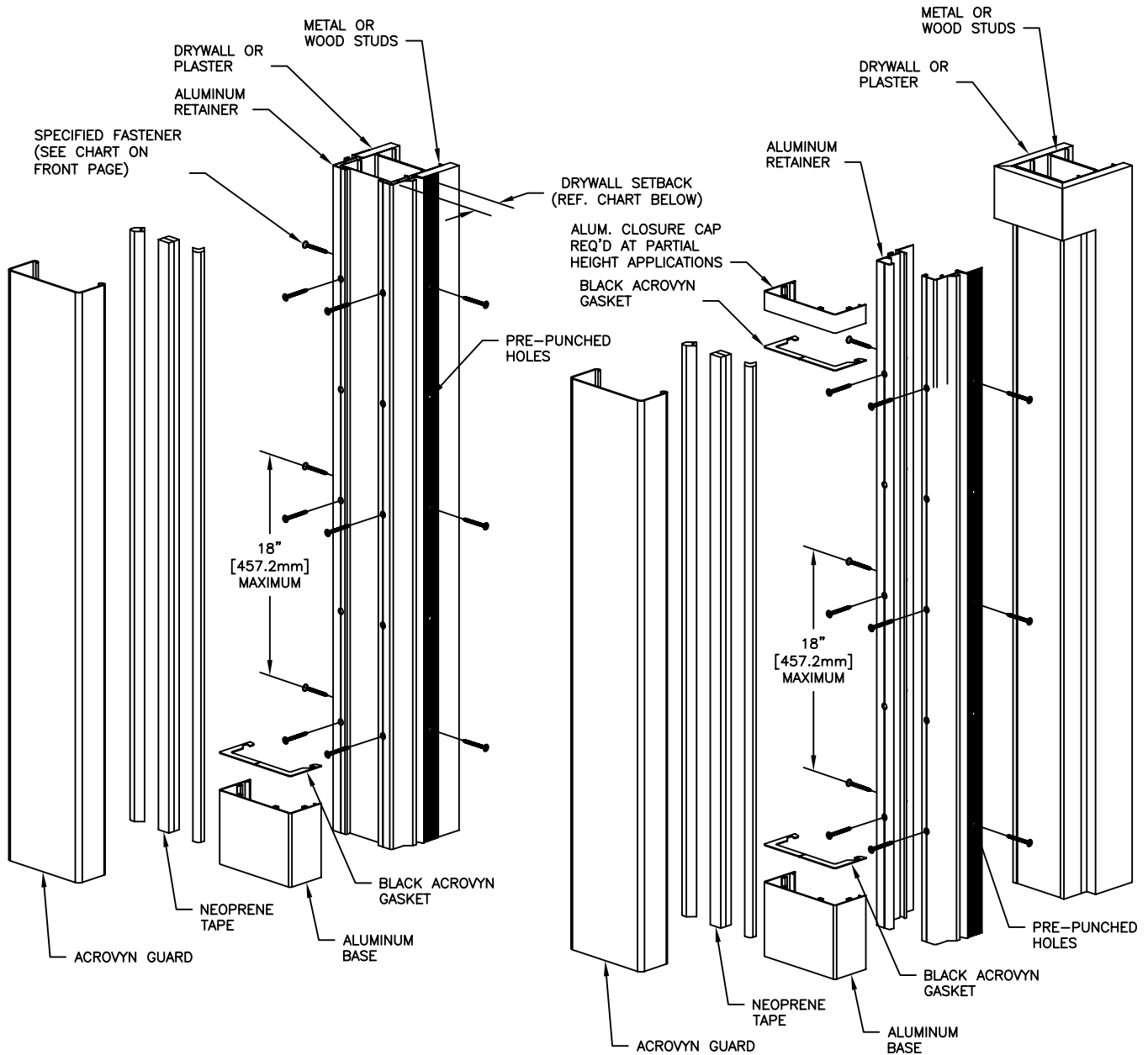
24X

## STANDARD DEDUCTIONS



# INSTALLATION INSTRUCTIONS

## FSC-25



FULL HEIGHT

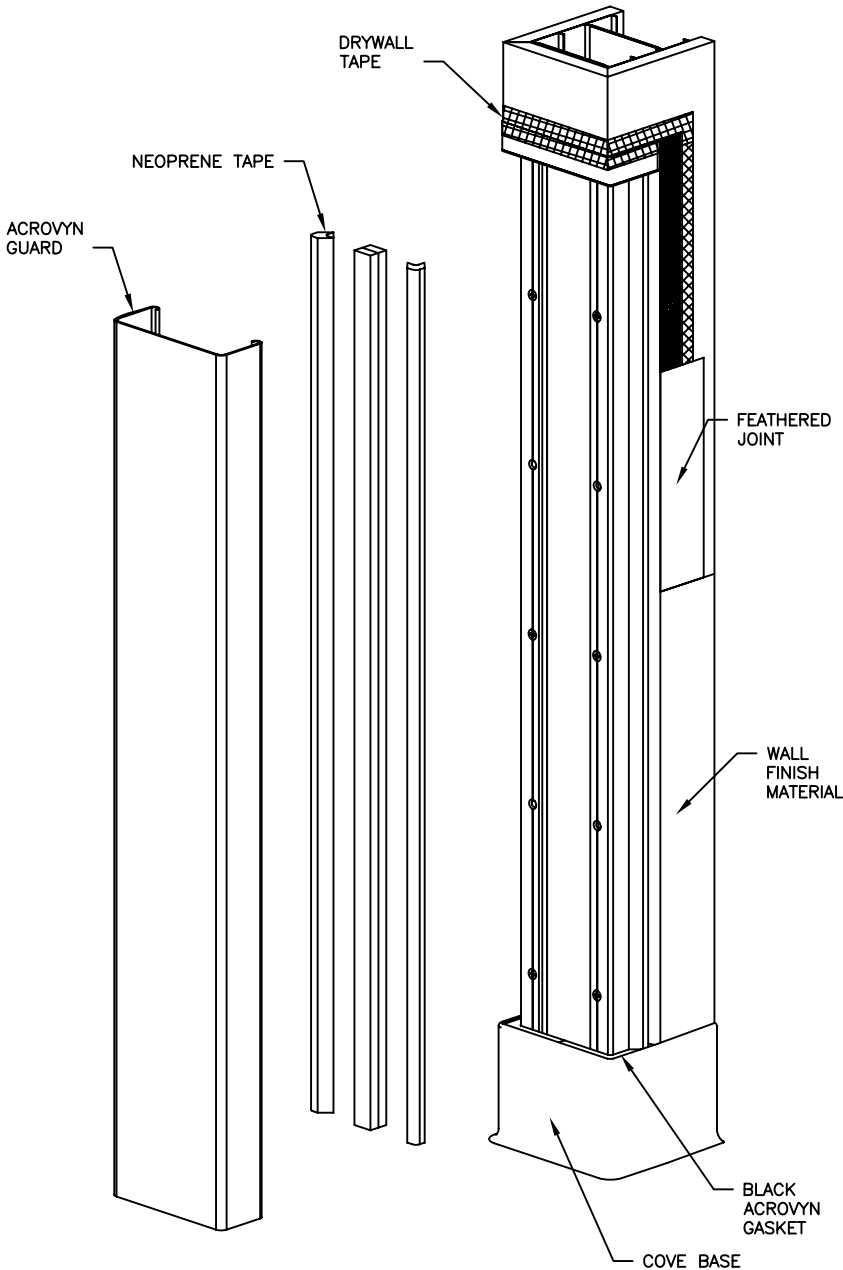
PARTIAL HEIGHT

PART NUMBERS BY MODEL									
THK.	STUD	MODEL	RETAINER	GUARD	4" BASE	6" BASE	1" TOP	GASKET	DRYWALL SETBACK
1/2"	3 5/8"	FSC-25	24A285000	24U012xxx	24F013000	24F148000	24F095000	24M013xxx	1 3/4" [44.5mm]
5/8"	3 5/8"	FSC-25	24A284000	24U012xxx	24F013000	24F148000	24F095000	24M013xxx	1 5/8" [41.3mm]
5/8"(2)	3 5/8"	FSC-25	24A284000	24U012xxx	24F013000	24F148000	24F095000	24M013xxx	1 5/8" [41.3mm]
5/8"	2 1/2"	FSC-25	24A284000	24U012xxx	24F013000	24F148000	24F095000	24M013xxx	1 5/8" [41.3mm]

# INSTALLATION INSTRUCTIONS

24X

FSC-25



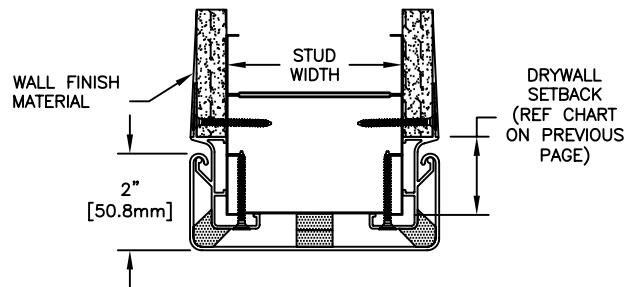
1. ALL FLUSH MOUNTED CORNER GUARDS ARE SHIPPED WITH CUT-TO-LENGTH ALUMINUM RETAINERS (WITH FACTORY DRILLED HOLES) AND ACROVYN COVERS.
2. INSTALL THE GYPSUM WALL BOARD OR PLASTER. HOLD THE GYPSUM WALL BOARD OR PLASTER BACK FROM THE CORNER THE CORRECT SETBACK DISTANCE TO PROVIDE A SNUG FIT WHEN THE RETAINER IS INSTALLED.
3. ALIGN EACH RETAINER WITH THE CORNER AND SECURE EACH LEG TO THE METAL/WOOD STUDS. BE SURE THE RETAINER REMAINS PLUMB WITH THE FINISH FLOOR.

**NOTE:** FOR SINGLE LAYER DRYWALL UNITS WITH STUDS WIDER THAN 3 5/8" OR DOUBLE GWB APPLICATIONS, THE BASE, TOP CAP AND ASSOCIATE PARTS HAVE BEEN FACTORY SPLIT. THE SNAP-ON BASE AND TOP CAP HAVE BEEN WELDED TO ACCOMMODATE THE EXTRA WIDTH. THE ACROVYN GASKET IS SHIPPED IN PARTS, WITH EXTRA PIECES INCLUDED, SO THE INSTALLER CAN FABRICATE A WORKABLE GASKET.

4. INSERT ALUMINUM BASE CLOSURE AT THE BASE OF THE RETAINER AND SET THE ACROVYN GASKET ON TOP. ALIGN GASKET WITH OUTSIDE EDGE.
5. WHEN LESS THAN FULL OR WAINSCOT HEIGHT INSTALLATIONS ARE REQUIRED, REPEAT THE ABOVE PROCEDURE AT THE TOP OF THE RETAINER USING A 1" [25.4mm] 'CLOSURE CAP'.
6. APPLY 2" [50.8mm] JOINT TAPE ALONG THE EDGE OF THE DRYWALL AND THE ALUMINUM RETAINER. FINISH THE INSTALLATION BY APPLYING THE FIRST COAT OF JOINT COMPOUND IN A UNIFORM THICKNESS TO PROVIDE A FEATHERED SURFACE. ALLOW TO DRY AND SAND AS NEEDED. APPLY ADDITIONAL COATS, AS REQUIRED, TO PROVIDE A UNIFORM FINISH. (APPLY THIS PROCEDURE TO ANY 'CLOSURE CAPS', USED ON PARTIAL HEIGHT INSTALLATIONS.)
7. FINISH WALL SURFACE AS SPECIFIED. BE SURE THAT THE SELECTED FINISH IS APPLIED TO THE INSIDE SURFACE OF THE REAR "CONTOURED" PORTION OF THE ALUMINUM RETAINER.
8. APPLY FOAM CUSHION TAPE ONTO BOTH CORNERS AND ALONG CENTER OF ALUMINUM RETAINER.

**NOTE:** IF THE RETAINER HAS BEEN SPLIT, APPLY THE CENTER TAPE ALONG ONE EDGE OF THE SPLIT.

9. FINISH INSTALLATION BY SNAPPING THE ACROVYN COVER ONTO THE RETAINER.



9/4/07

CONSTRUCTION SPECIALTIES INC  
DECOGARD PRODUCTS

MUNCY, PENNSYLVANIA 17756  
MISSISSAUGA ONTARIO L5E 2C2

A Member of the  
**CS GROUP**  
of Companies

This document is the property of Construction Specialties, Inc. and contains CONFIDENTIAL PROPRIETARY INFORMATION that is not to be disclosed to third parties and is not to be used without approval in writing from Construction Specialties, Inc.

FOR FURTHER ASSISTANCE CALL (800) 233-8493 OR FAX (570) 546-5169 OR IN CANADA CALL (888) 895-8955 OR FAX (905) 274-6241