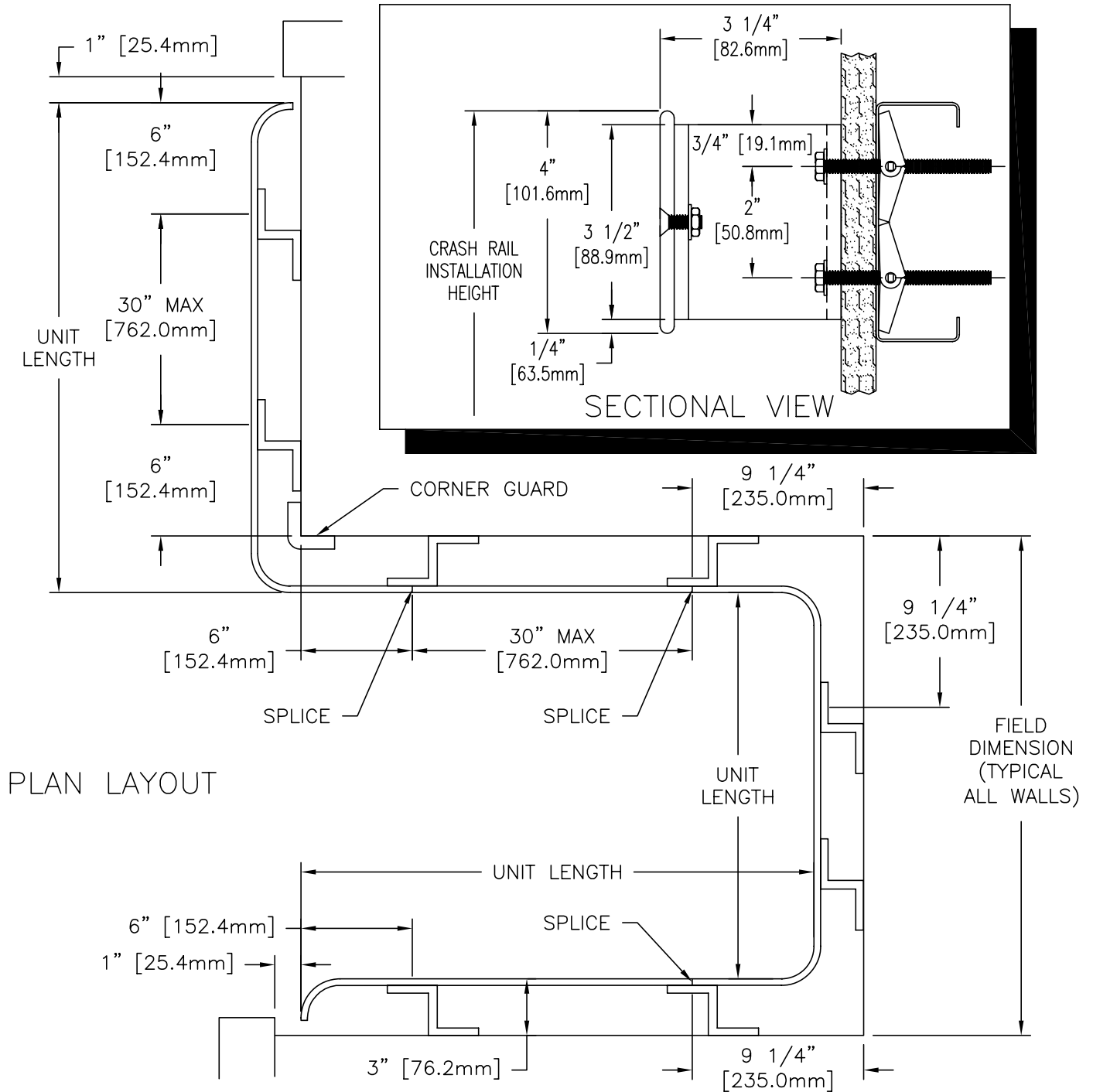


NOTE: MATERIAL MUST REACH 65°F MIN TO 75°F MAX 24 HOURS PRIOR TO INSTALLATION. THIS IS ESSENTIAL TO MINIMIZE EXPANSION AND CONTRACTION OF THE MATERIAL.

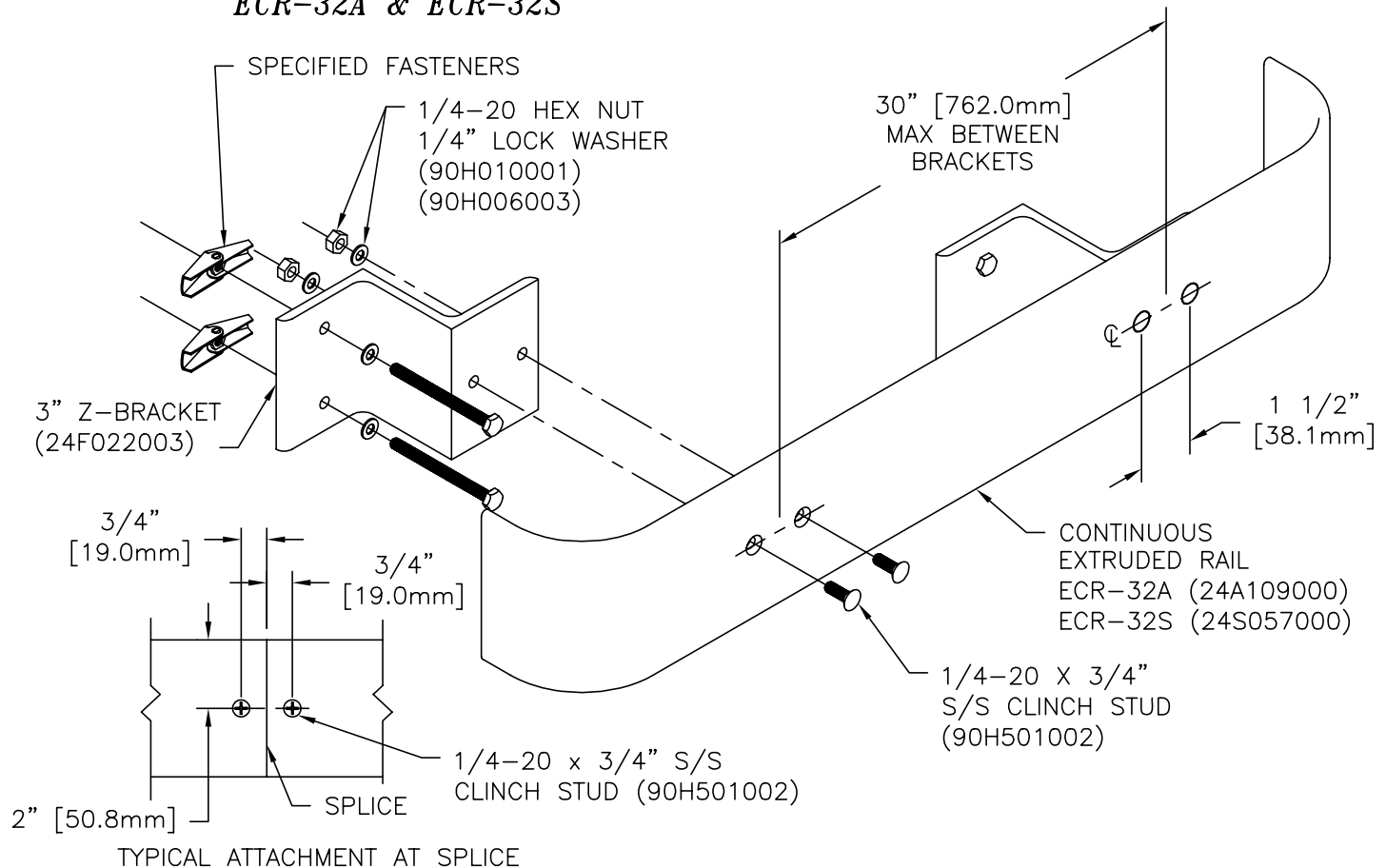


WALL CONDITION	SPECIFIED FASTENER	DRILL DIAMETERS		C/S PART NUMBER
		WALL	RETAINER	
STEEL STUD/GYPSUM WALL	1/4-20 X 3" SST HEX HD BOLT W/ TOGGLE	3/4"	N/A	90H280002 90H019004
CONCRETE/CONC. BLOCK	1/4-20 X 1-1/2" SST HEX HD BOLT AND MASONRY ANCHOR	1/2"	N/A	90H096002 90H016004
WOOD STUD/GYPSUM WALL	1/4" X 3" SST LAG HEX HD SCREW	3/16"	N/A	90H088002

# INSTALLATION INSTRUCTIONS

24AE

## ECR-32A & ECR-32S



1. DISTRIBUTE MATERIAL. MATCH THE NUMBER ON THE BACK OF THE RAIL TO THE MARK NUMBER ON THE DRAWING. SOME LARGE RUNS REQUIRE MORE THAN ONE PIECE OF CRASH RAIL. THESE ARE NOTED WITH A MARK NUMBER AND A LETTER, I.E. 2001A 2001B.
2. ESTABLISH CRASH RAIL HEIGHT ABOVE THE FINISHED FLOOR. MEASURE FROM THE FLOOR TO REQUIRED RAIL HEIGHT AND DEDUCT 1/4" [6.35mm] TO LOCATE TOP EDGE OF BRACKET. SNAP A CHALK LINE AT THIS HEIGHT.
3. ATTACH BRACKETS TO RAIL WITH SPECIFIED FASTENERS. FASTENERS SHOULD BE TORQUED TO A MAXIMUM OF 85 INCH POUNDS. NOTE: OVER TORQUING MAY CAUSE DAMAGE TO SYSTEM.
4. USE RAIL WITH ATTACHED BRACKETS AS A TEMPLATE TO MARK BRACKET LOCATIONS ON THE WALL.
5. ONCE BRACKET LOCATIONS ARE ESTABLISHED ON THE WALL, REMOVE BRACKETS FROM THE RAIL.
6. LOOSELY ATTACH BRACKETS TO WALL WITH SPECIFIED FASTENERS.
7. ATTACH RAIL TO BRACKETS.
8. TIGHTEN ALL FASTENERS AND REMOVE PROTECTIVE COATING FROM RAIL TO COMPLETE INSTALLATION.

8/2/02

CONSTRUCTION SPECIALTIES INC  
DECOGARD PRODUCTS

MUNCY, PENNSYLVANIA 17756  
MISSISSAUGA ONTARIO L5E 2C2

A Member of the  
**CS GROUP**  
of Companies

This document is the property of Construction Specialties, Inc. and contains CONFIDENTIAL PROPRIETARY INFORMATION that is not to be disclosed to third parties and is not to be used without approval in writing from Construction Specialties, Inc.

FOR FURTHER ASSISTANCE CALL (800) 233-8493 OR FAX (570) 546-5169 OR IN CANADA CALL (888) 895-8955 OR FAX (905) 274-6241