

**BL-100N/200N BED LOCATOR**

**PLEASE READ**

PLEASE READ THESE INSTRUCTIONS THOROUGHLY PRIOR TO BEGINNING THE BL-100N/200N BED LOCATOR INSTALLATION!

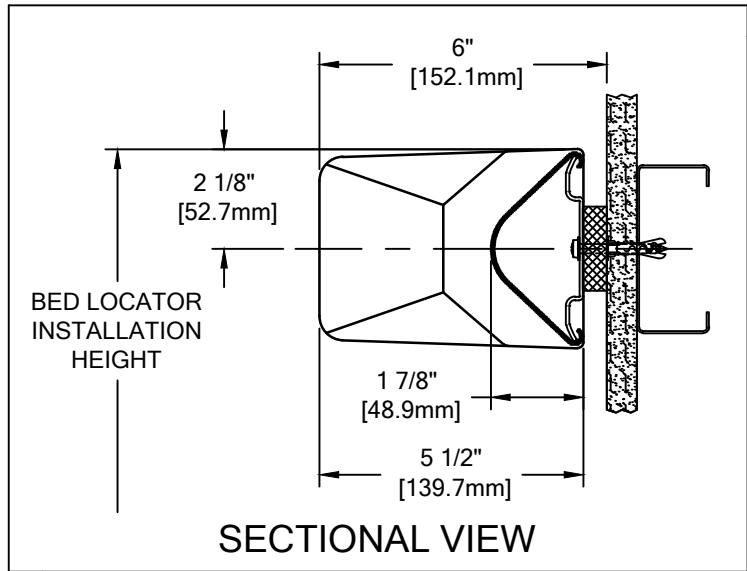
THIS INSTRUCTION SHEET IS INTENDED TO PROVIDE A SPECIFIC GUIDE TO FOLLOW FOR THE INSTALLATION OF BL-100N/200N BED LOCATOR. CONTAINED WITHIN IS THE TECHNICAL INFORMATION AND INSTALLATION TECHNIQUES REQUIRED TO COMPLETE AN EFFICIENT, NEAT AND LONG-LASTING INSTALLATION.

BL-100N/200N BED LOCATOR MUST BE INSTALLED IN ACCORDANCE WITH THESE INSTRUCTIONS! FAILURE TO FOLLOW THESE INSTRUCTIONS MAY VOID ANY PRODUCT WARRANTIES AND RESULT IN AN UNSUCCESSFUL INSTALLATION. FOR SPECIFIC QUESTIONS REGARDING THE INSTALLATION OF BL-100N/200N BED LOCATOR PLEASE CALL THE FACTORY AT (800) 233-8493 OR IN CANADA (888) 895-8955.

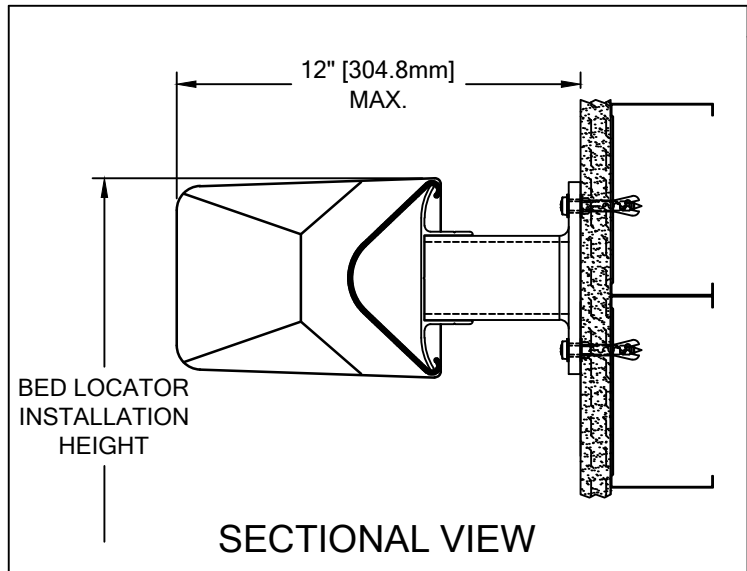
INSPECT ALL MATERIALS FOR DAMAGE OR MISSING PARTS. IF YOU DISCOVER DAMAGED OR MISSING MATERIALS, IN THE USA PLEASE NOTIFY THE FACTORY AT (800) 233-8493, AND IN CANADA (888) 895-8955.

**IMPORTANT NOTES**

1. ALL DIMENSIONS ARE TYPICAL.
2. FOR DRYWALL/PLASTER WALL CONSTRUCTION, IT IS RECOMMENDED FOR FASTENERS TO BE ENGAGED INTO METAL/WOOD STUDS TO MAINTAIN MAXIMUM PULLOUT STRENGTH.
3. MATERIAL MUST REACH 65°F MIN. TO 75°F MAX. 24 HOURS PRIOR TO INSTALLATION. THIS IS ESSENTIAL TO MINIMIZE EXPANSION AND CONTRACTION OF MATERIAL.
4. MODEL BL-100N IS SHIPPED WITH ALL END CAPS ATTACHED.
5. MODEL BL-200N IS SHIPPED PRE-ASSEMBLED WITH END CAPS AND ACROVYN COVER ATTACHED.
6. THIS BED LOCATOR REQUIRES A MINIMUM OF 2 MOUNTING BRACKETS PER UNIT.

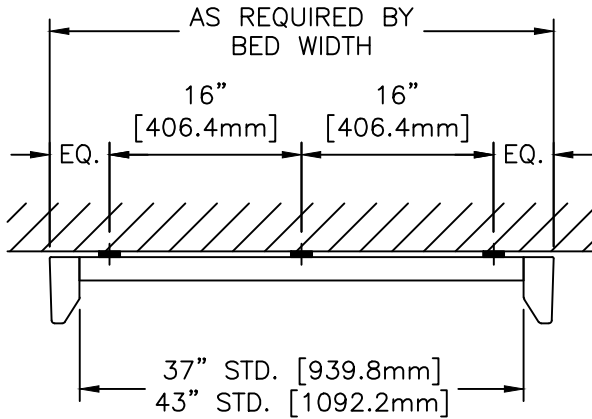


*MODEL: BL-100N*

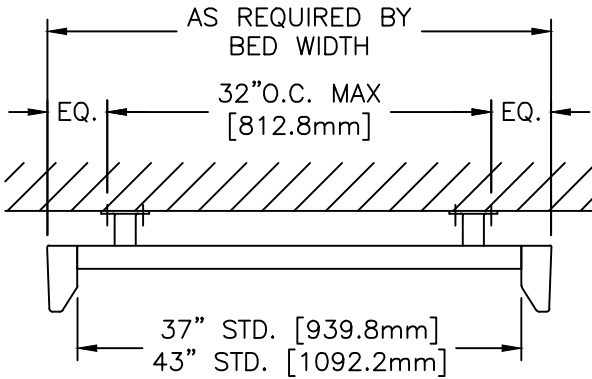


*MODEL: BL-200N*

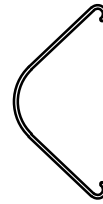
**BL-100N/200N BED LOCATOR**



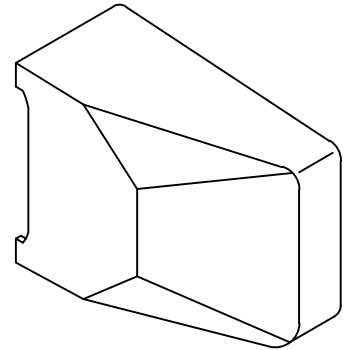
*MODEL: BL-100N*



*MODEL: BL-200N*



ACROVYN COVER  
(24U001xxx)



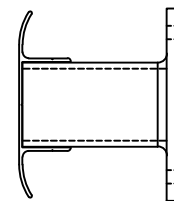
ACROVYN BED LOCATOR  
END CAP  
(24I017xxx)



ALUMINUM RETAINER  
(24A129000)



MOUNTING CUSHION  
(24I066000)

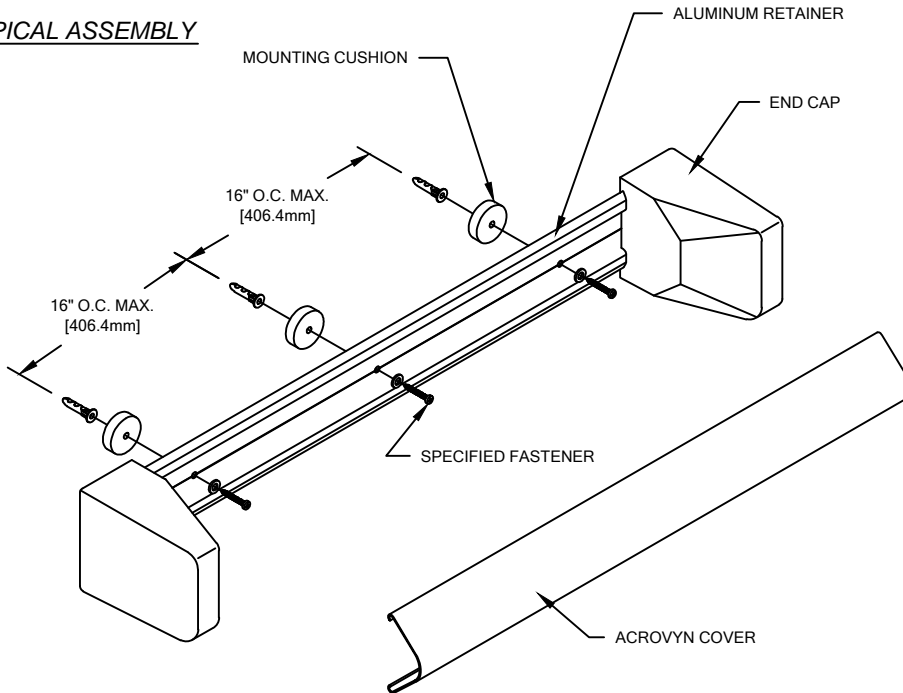


ALUMINUM BRACKET  
ASSEMBLY

WALL CONDITION	SPECIFIED FASTENER	DRILL DIAMETERS		C/S PART NUMBER
		WALL	RETAINER	
STEEL STUD/GYPSUM WALL	AF-6 ALLIGATOR ANCHOR #10 X 2" PHILLIPS PAN HD. SMS 1/4" FLAT WASHER STEEL PLATED SAE	15/64"	9/32"	90H039004 90H191002 90H007003
CONCRETE/CONCRETE BLOCK	AF-6 ALLIGATOR ANCHOR #10 X 2" PHILLIPS PAN HD. SMS 1/4" FLAT WASHER STEEL PLATED SAE	1/4"	9/32"	90H039004 90H191002 90H007003
WOOD STUD/GYPSUM WALL	#9 X 2-1/4" WAFER HD. PH DRYWALL SCREW 1/4" FLAT WASHER STEEL PLATED SAE	N/A	N/A	90H421002 90H007003

**BL-100N/200N BED LOCATOR**

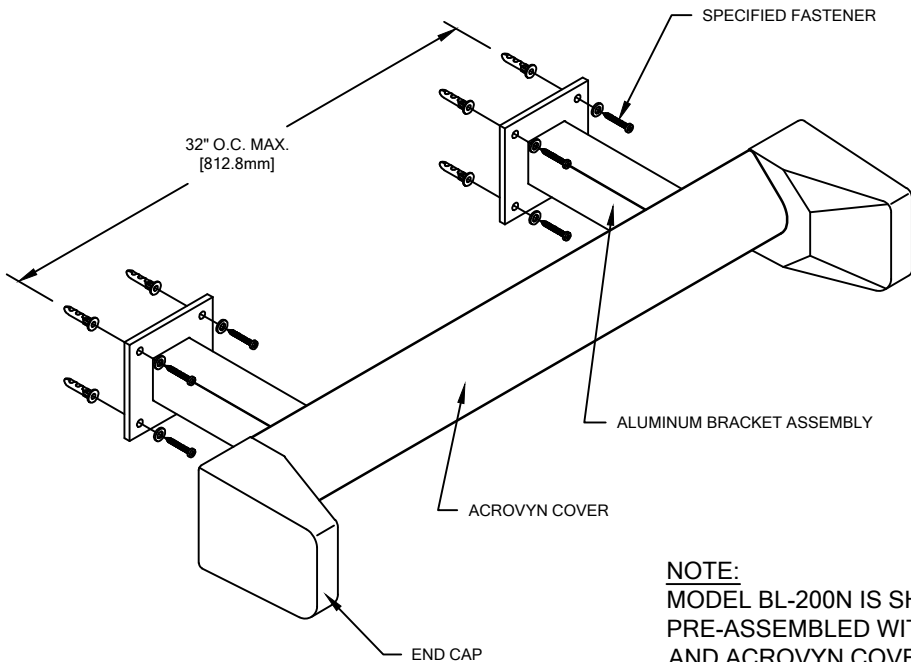
TYPICAL ASSEMBLY



MODEL BL-100N

1. ESTABLISH BED LOCATOR HEIGHT ABOVE FINISH FLOOR. DEDUCT 2-1/8" [53.9mm] AND SNAP A CHALK LINE AT THAT LOCATION. THIS MARKS THE CENTERLINE OF THE BED LOCATOR FASTENERS.
2. USING THE ALUMINUM RETAINER AS A TEMPLATE, MARK THE HOLE LOCATIONS ALONG THE CHALK LINE AND DRILL HOLE DIAMETER, AS REQUIRED, AT THE PROPER LOCATIONS. REFERENCE CHART ON PAGE 2 FOR CORRECT DRILL DIAMETERS.
3. INSTALL EACH BED LOCATOR USING THE APPROPRIATE FASTENERS. USE A LEVEL TO ENSURE THAT RETAINER IS PLUMB.
4. INSTALL THE ACROVYN COVER BY ALIGNING THE TOP OF THE COVER WITH THE TOP OF THE ALUMINUM RETAINER AND SNAP THE BOTTOM PORTION ONTO THE LOWER SECTION OF THE RETAINER.

**NOTE:**  
MODEL BL-100N IS SHIPPED WITH ALL END CAPS ATTACHED.



MODEL BL-200N

1. ESTABLISH BED LOCATOR HEIGHT ABOVE FINISH FLOOR. DEDUCT 5/8" [15.9mm] AND SNAP A CHALK LINE AT THAT LOCATION. THIS MARKS THE LOCATION OF THE TOP PAIR OF FASTENERS REQUIRED FOR THIS UNIT.
2. USING THE BED LOCATOR ASSEMBLY AS A TEMPLATE, MARK THE HOLE LOCATIONS FOR THE MOUNTING HARDWARE AND DRILL HOLE DIAMETER, AS REQUIRED. REFERENCE CHART ON PAGE 2 FOR CORRECT DRILL DIAMETERS.
3. INSTALL BED LOCATOR USING THE APPROPRIATE FASTENERS. USE A LEVEL TO ENSURE THAT BED LOCATOR IS PLUMB.

**NOTE:**  
MODEL BL-200N IS SHIPPED PRE-ASSEMBLED WITH END CAPS AND ACROVYN COVER ATTACHED.