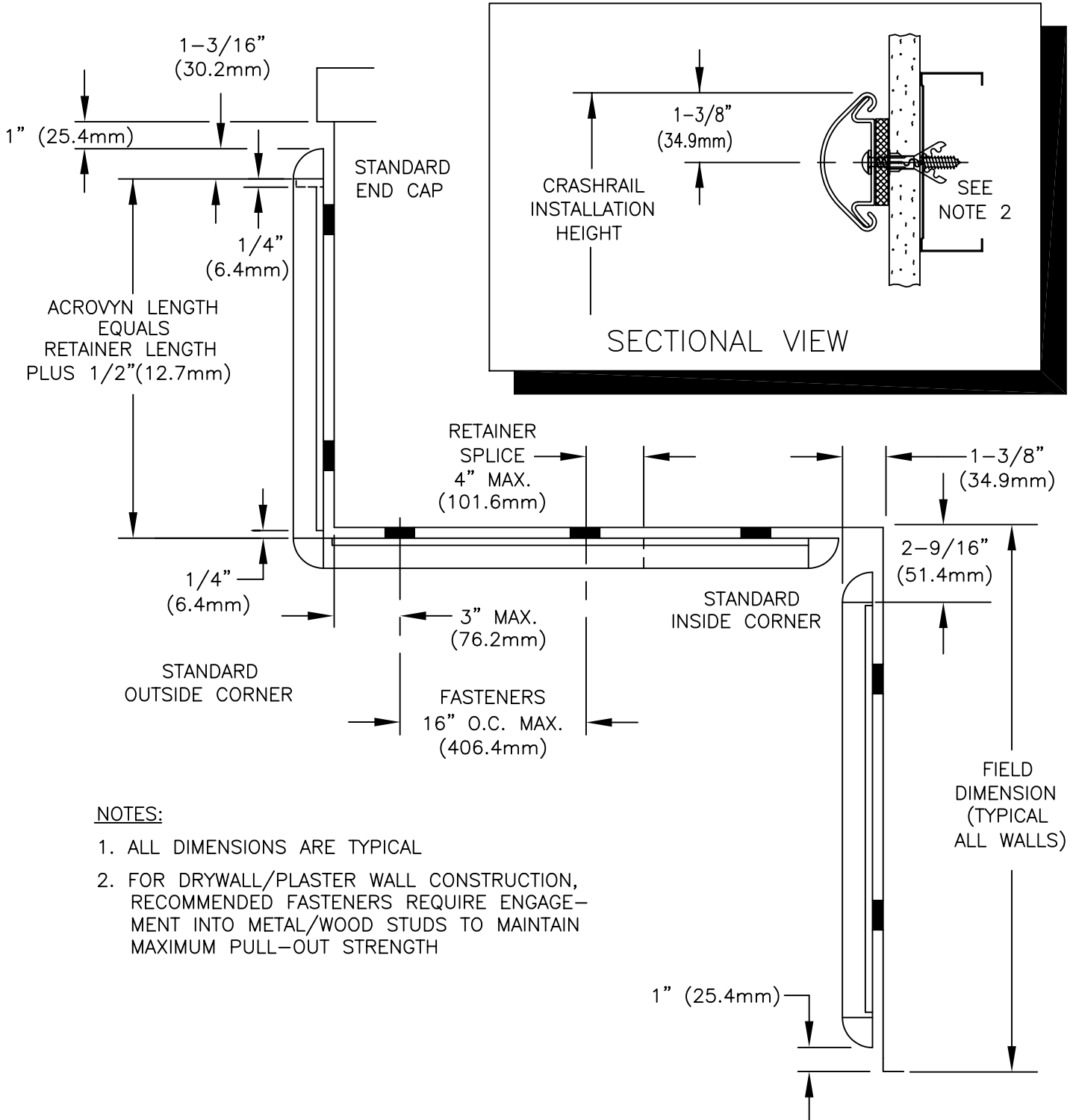


**NOTE:** MATERIAL MUST REACH 65°F MIN TO 75°F MAX 24 HOURS PRIOR TO INSTALLATION. THIS IS ESSENTIAL TO MINIMIZE EXPANSION AND CONTRACTION OF THE MATERIAL.



**NOTES:**

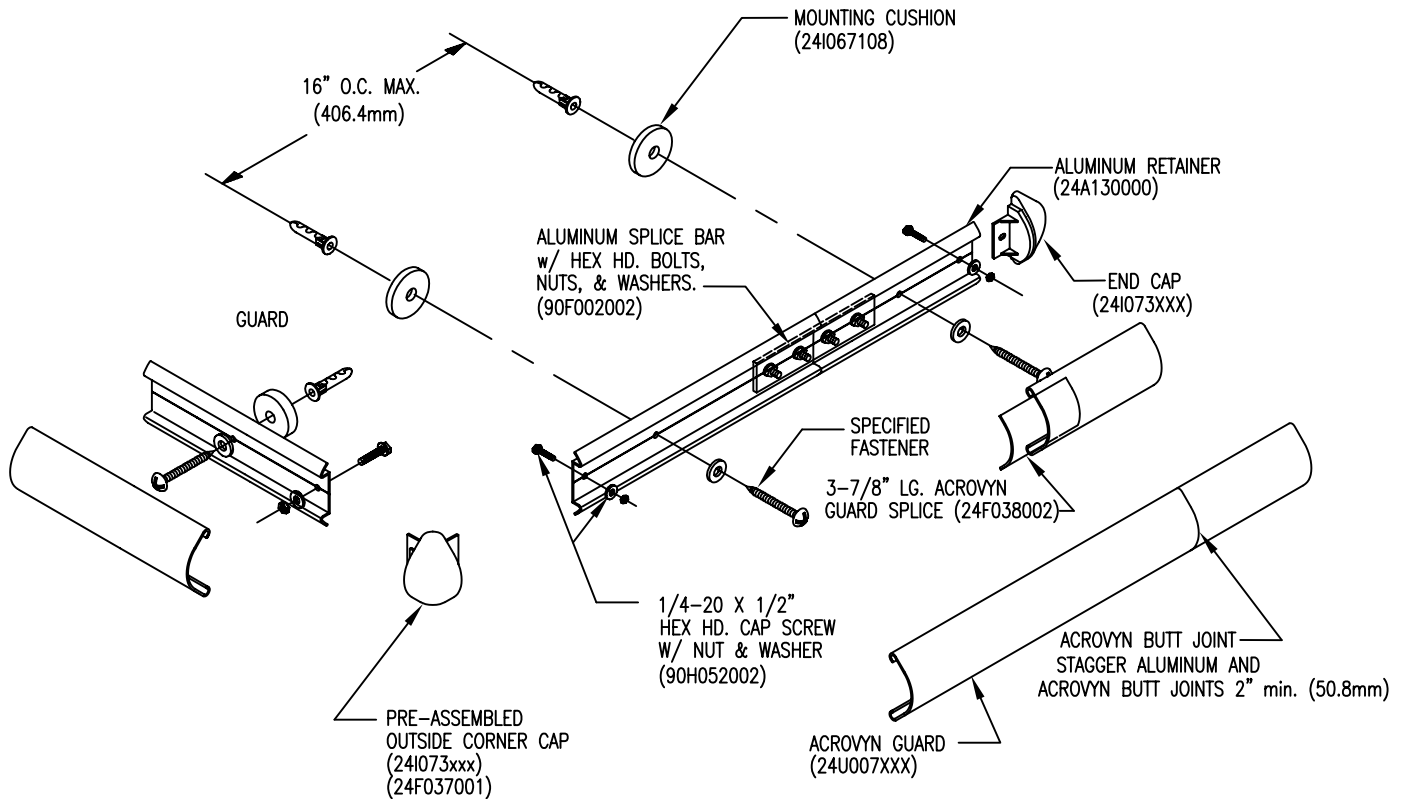
1. ALL DIMENSIONS ARE TYPICAL
2. FOR DRYWALL/PLASTER WALL CONSTRUCTION, RECOMMENDED FASTENERS REQUIRE ENGAGEMENT INTO METAL/WOOD STUDS TO MAINTAIN MAXIMUM PULL-OUT STRENGTH

WALL CONDITION	SPECIFIED FASTENER	DRILL DIAMETERS		C/S PART NUMBER
		WALL	RETAINER	
STEEL STUD/GYPSUM WALL	AF-6 ALLIGATOR ANCHOR #10 X 2" PHILLIPS PAN HD. SMS	15/64"	9/32"	90H039004 90H191002
CONCRETE/CONC. BLOCK	AF-6 ALLIGATOR ANCHOR #10 X 2" PHILLIPS PAN HD. SMS	1/4"	9/32"	90H039004 90H191002
WOOD STUD/GYPSUM WALL	#9 X 2 1/4" WAFER HD PH DRYWALL SCREW	N/A	N/A	90H421002

# INSTALLATION INSTRUCTIONS

24K

BC-30



1. ESTABLISH BUMPER GUARD HEIGHT ABOVE FINISH FLOOR. DEDUCT 1-3/8" AND SNAP A CHALK LINE AT THAT HEIGHT. THIS MARKS THE LOCATION OF THE FASTENERS FOR THE ALUMINUM RETAINER.
2. CUT THE CONTINUOUS ALUMINUM RETAINER, TO LENGTH, USING THE REQUIRED DEDUCTIONS AS NOTED. (SEE REVERSE) AND DRILL CLEARANCE HOLES (FASTENER) 3" FROM EACH END AND 16" O. C., AT THE V-GROOVE, ALONG THE RETAINER LENGTH.
3. ATTACH END CAPS/OUTSIDE CORNERS BY ALIGNING THE END CAP/OUTSIDE CORNER WITH THE END OF THE ALUM. RETAINER AND SECURING INTO POSITION USING ONE 1/4-20 HEX HD. SCREW FASTENER AT EACH END CAP AND TWO (2) AT EACH OUTSIDE CORNER (ONE (1) EA. LEG).

**NOTE:** TO AID IN LOCATING THE END CAPS CORRECTLY, CUT A 4"(101.6mm) SECTION OF GUARD FROM SCRAP AND SNAP IT ON THE RETAINER. LOCATE THE CAP SO IT ALIGNS FLUSH WITH TOP AND BOTTOM OF THE GUARD.

4. USING THE ALUMINUM RETAINER AS A TEMPLATE MARK THE FASTENER LOCATIONS ALONG THE CHALK LINE AND DRILL HOLE DIAMETER (AS REQUIRED) AT THE PROPER LOCATIONS. SEE (NOTE 2) REVERSE.
5. INSTALL EACH SECTION OF ASSEMBLED RETAINER, IN SUCCESSION, USING THE APPROPRIATE FASTENER HARDWARE. USE A LEVEL TO ENSURE RETAINER IS PLUMB.
6. CUT THE ACROVYN COVER TO THE PROPER LENGTH. ALIGN THE TOP OF THE ACROVYN COVER WITH THE TOP OF THE ALUMINUM RETAINER AND SNAP THE GUARD ONTO THE BOTTOM SECTION OF THE RETAINER.

**NOTE:** MANUFACTURER RECOMMENDS ALL PRINTED "PRODUCT IDENTIFICATION" ON THE REAR OF THE ACROVYN PROFILE SHALL BE ORIENTATED IN THE SAME DIRECTION DURING INSTALLATION TO ENSURE PROPER ALIGNMENT AT SPLICE BUTT JOINTS.

7/8/05

CONSTRUCTION SPECIALTIES, INC.  
AND/OR  
DecoGard Products, Inc.

MUNCY, PENNSYLVANIA 17756-9106  
VISTA, CALIFORNIA 92083-9438  
MISSISSAUGA, ONTARIO L5E 2C2

A member of the  
**CS GROUP**  
of companies

This document is the property of Construction Specialties, Inc. and contains CONFIDENTIAL PROPRIETARY INFORMATION that is not to be disclosed to third parties and is not to be used without approval in writing from Construction Specialties, Inc.

FOR FURTHER ASSISTANCE CALL 1-888-834-4455 OR FAX 570-546-5169  
OR IN CANADA CALL 905-274-3611 OR FAX 905-274-6241