

## 2 HOUR FIRE RATED CORNER GUARDS

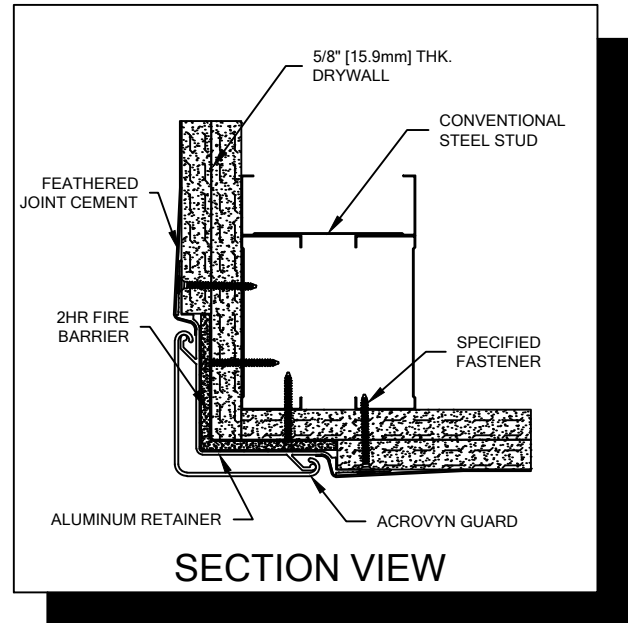
### PLEASE READ

PLEASE READ THESE INSTRUCTIONS THOROUGHLY PRIOR TO BEGINNING THE 2 HR FIRE RATED CORNER GUARD INSTALLATION!

THIS INSTRUCTION SHEET IS INTENDED TO PROVIDE A SPECIFIC GUIDE TO FOLLOW FOR THE INSTALLATION OF THE 2 HR FIRE RATED CORNER GUARDS. CONTAINED WITHIN IS THE TECHNICAL INFORMATION AND INSTALLATION TECHNIQUES REQUIRED TO COMPLETE AN EFFICIENT, NEAT AND LONG-LASTING INSTALLATION.

2 HR FIRE RATED CORNER GUARDS MUST BE INSTALLED IN ACCORDANCE WITH THESE INSTRUCTIONS! FAILURE TO FOLLOW THESE INSTRUCTIONS MAY VOID ANY PRODUCT WARRANTIES AND RESULT IN AN UNSUCCESSFUL INSTALLATION. FOR SPECIFIC QUESTIONS REGARDING THE INSTALLATION OF 2 HR FIRE RATED CORNER GUARDS, PLEASE CALL THE FACTORY AT (800) 233-8493 OR IN CANADA (888) 895-8955.

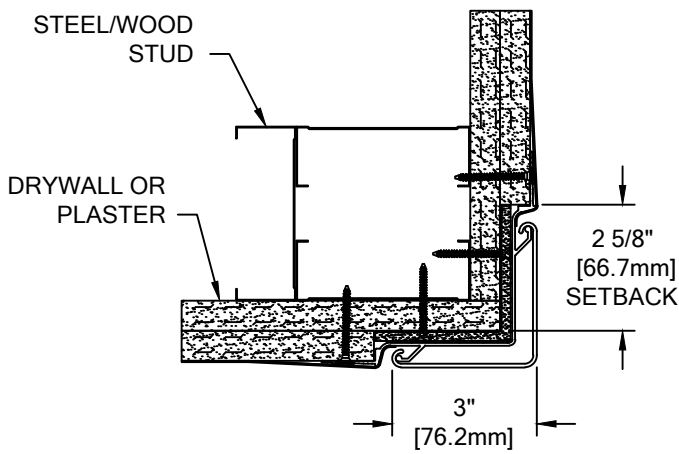
INSPECT ALL MATERIALS FOR DAMAGE OR MISSING PARTS. IF YOU DISCOVER DAMAGED OR MISSING MATERIALS, IN THE USA PLEASE NOTIFY THE FACTORY AT (800) 233-8493, AND IN CANADA (888) 895-8955.



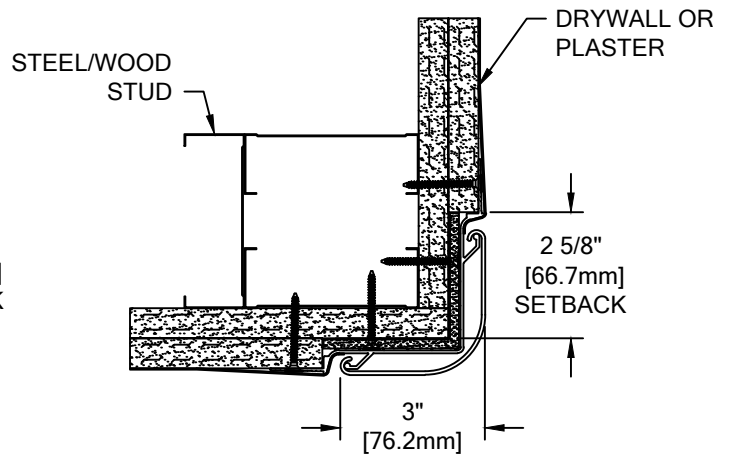
### IMPORTANT NOTES

1. THIS MATERIAL HAS BEEN MANUFACTURED TO CUSTOMER SPECIFIED DIMENSIONS AND CAN NOT BE CUT OR MODIFIED ON SITE. TO DO SO COULD VOID THE WARRANTY.
2. ALL DIMENSIONS ARE TYPICAL.
3. THE SPECIFIED BLOCK-OUT (SEE PAGE 2) DIMENSIONS FOR EACH CORNER GUARD ASSEMBLY MUST BE MAINTAINED, TO ENSURE FIRE-RATED INTEGRITY OF THE SPECIFIED WALL CONSTRUCTION.
4. MATERIAL MUST REACH 65°F MIN. TO 75°F MAX. 24 HOURS PRIOR TO INSTALLATION. THIS IS ESSENTIAL TO MINIMIZE EXPANSION AND CONTRACTION OF MATERIAL.
5. DUE TO 1 1/4" [31.8mm] NOSE RADIUS IT IS NOT RECOMMENDED TO INSTALL SFS-10RN AT PARTIAL HEIGHT.

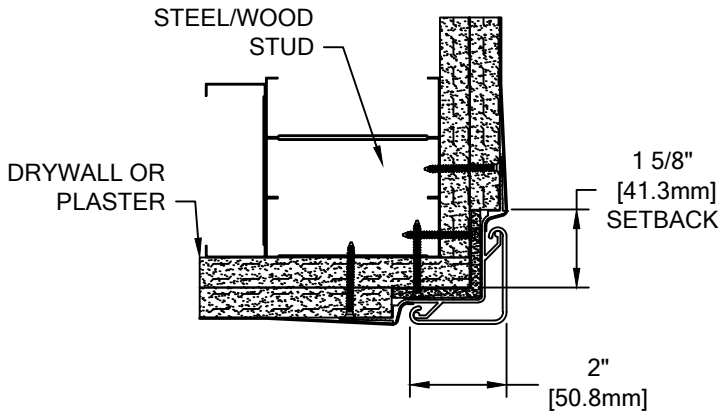
**2 HOUR FIRE RATED  
CORNER GUARDS**



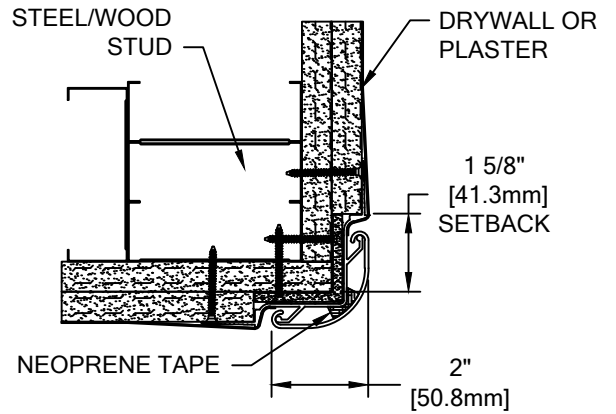
**FS-20RN**



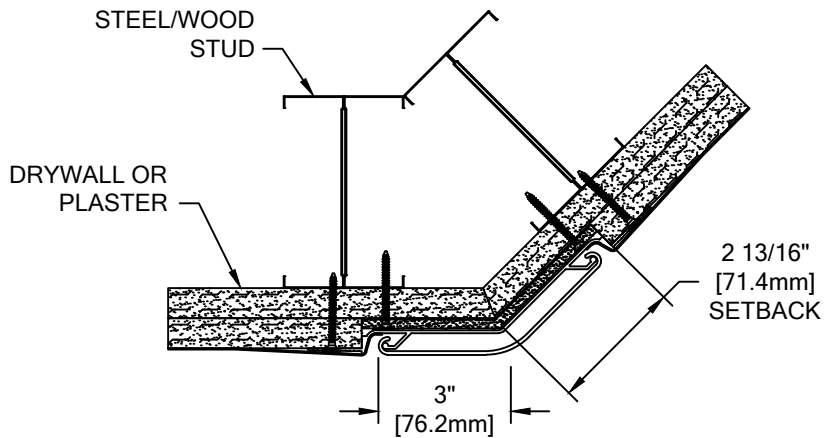
**FS-10RN**



**SFS-20RN**

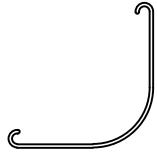


**SFS-10RN**

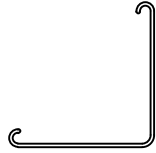


**FS-10MRN**

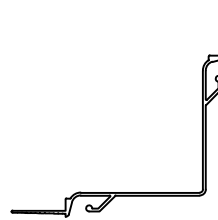
**2 HOUR FIRE RATED  
CORNER GUARDS**



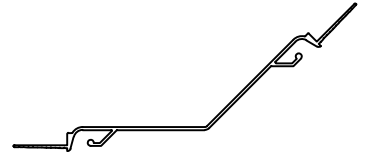
FS-10RN/FS-10MRN  
ACROVYN GUARD  
(24U001xxx)



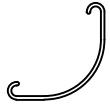
FS-20RN ACROVYN GUARD  
(24U002xxx)



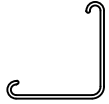
FS-10RN/FS-20RN  
ALUMINUM RETAINER  
(24A155000)



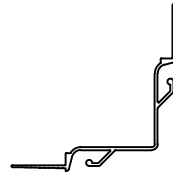
FS-10MRN  
ALUMINUM RETAINER  
(24A158000)



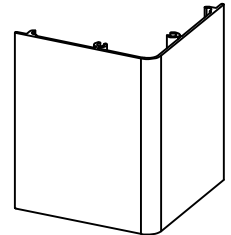
SFS-10RN  
ACROVYN GUARD  
(24U007xxx)



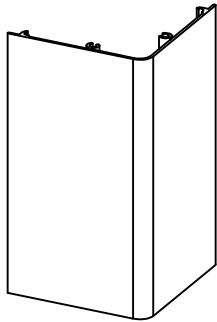
SFS-20RN  
ACROVYN GUARD  
(24U004xxx)



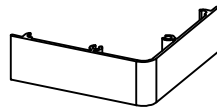
SFS-10RN/SFS-20RN  
ALUMINUM RETAINER  
(24A156000)



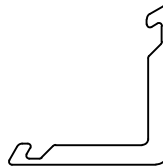
4" ALUMINUM BASE  
(24F008000-FS10RN )  
(24F010000-FS10MRN)  
(24F009000-FS20RN)  
(24F011000-SFS10RN)  
(24F012000-SFS20RN)



6" ALUMINUM BASE  
(24F145000-FS10RN)  
(24F149000-FS10MRN)  
(24F146000-FS20RN)  
(24F147000-SFS10RN)  
(24F144000-SFS20RN)



1" ALUMINUM  
CLOSURE CAP  
(24F094000-FS10RN)  
(24F096000-FS10MRN)  
(24F062000-FS20RN)  
(24F093000-SFS10RN)  
(24F063000-SFS20RN)

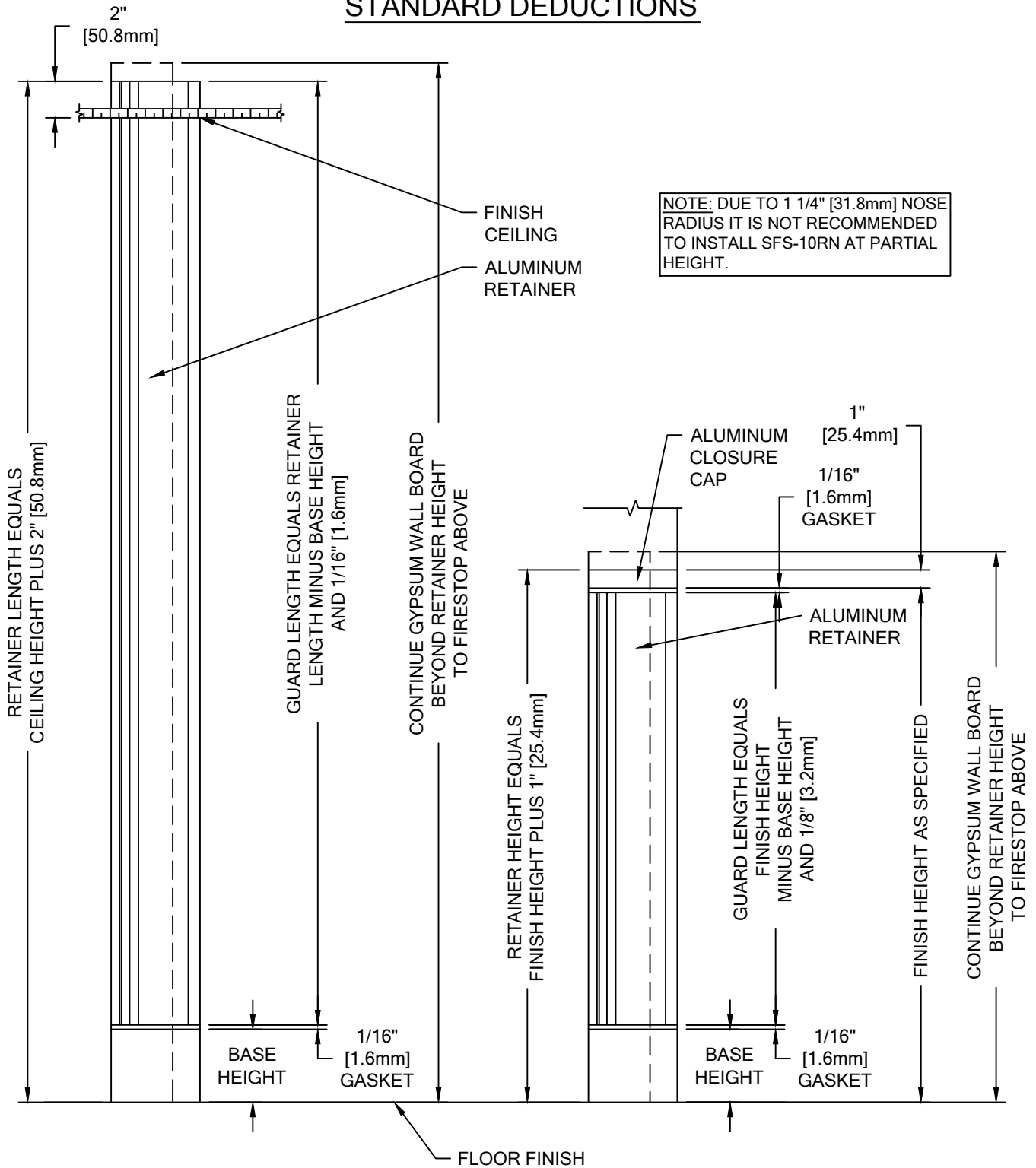


GASKET  
(24M009000-FS10RN)  
(24M018000-FS10MRN)  
(24M010000-FS20RN)  
(24M011000-SFS10RN)  
(24M012000-SFS20RN)

WALL CONDITION	SPECIFIED FASTENER	DRILL DIAMETERS			C/S PART NUMBER
		WALL	RETAINER	F. BARRIER	
STEEL STUD/GYPSUM WALL	#6 X 1 5/8" BUGLE HEAD SMS	N/A	N/A	N/A	90H079002
FIRE BARRIER					

**2 HOUR FIRE RATED  
CORNER GUARDS**

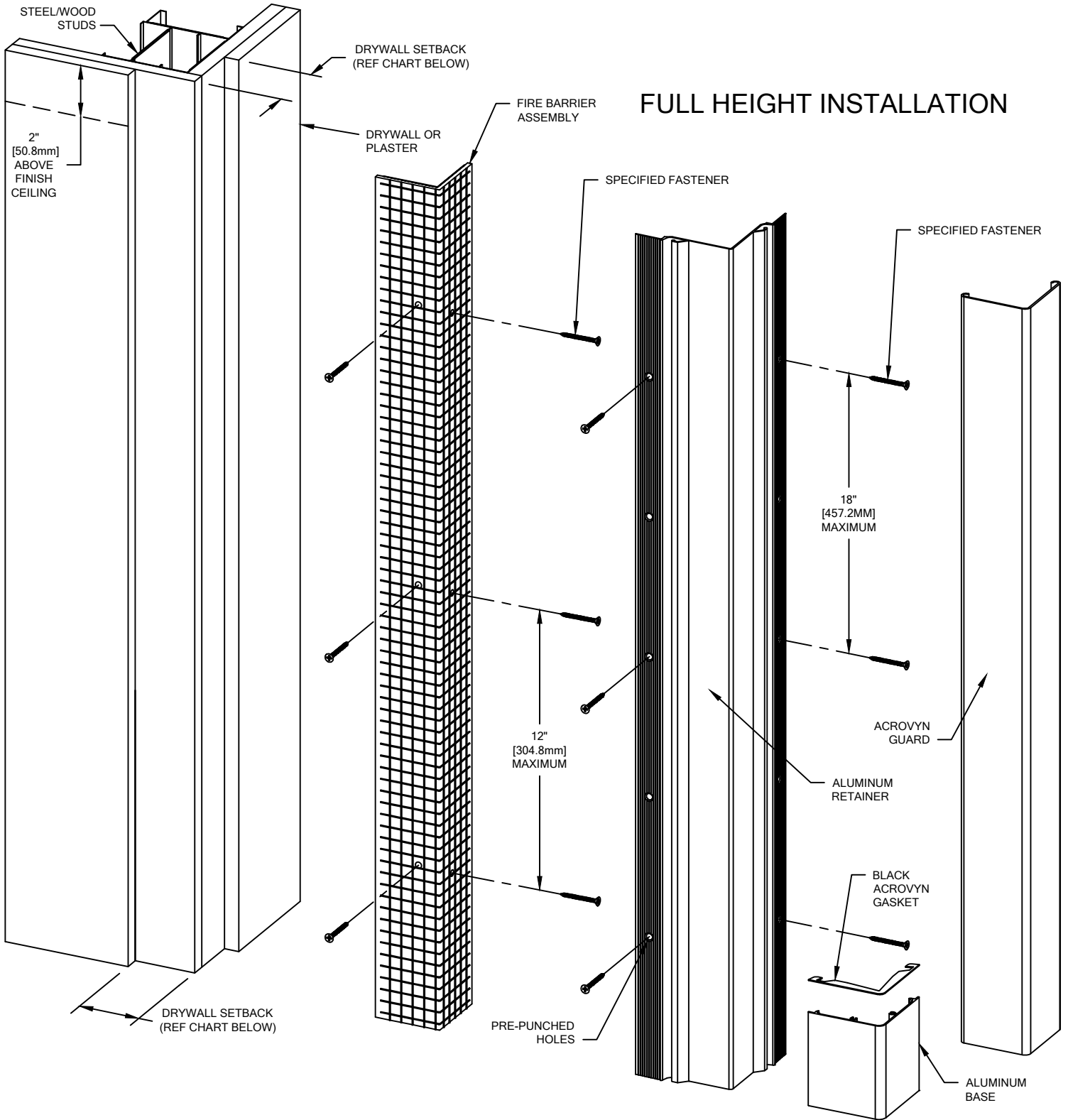
**STANDARD DEDUCTIONS**



**FULL HEIGHT**

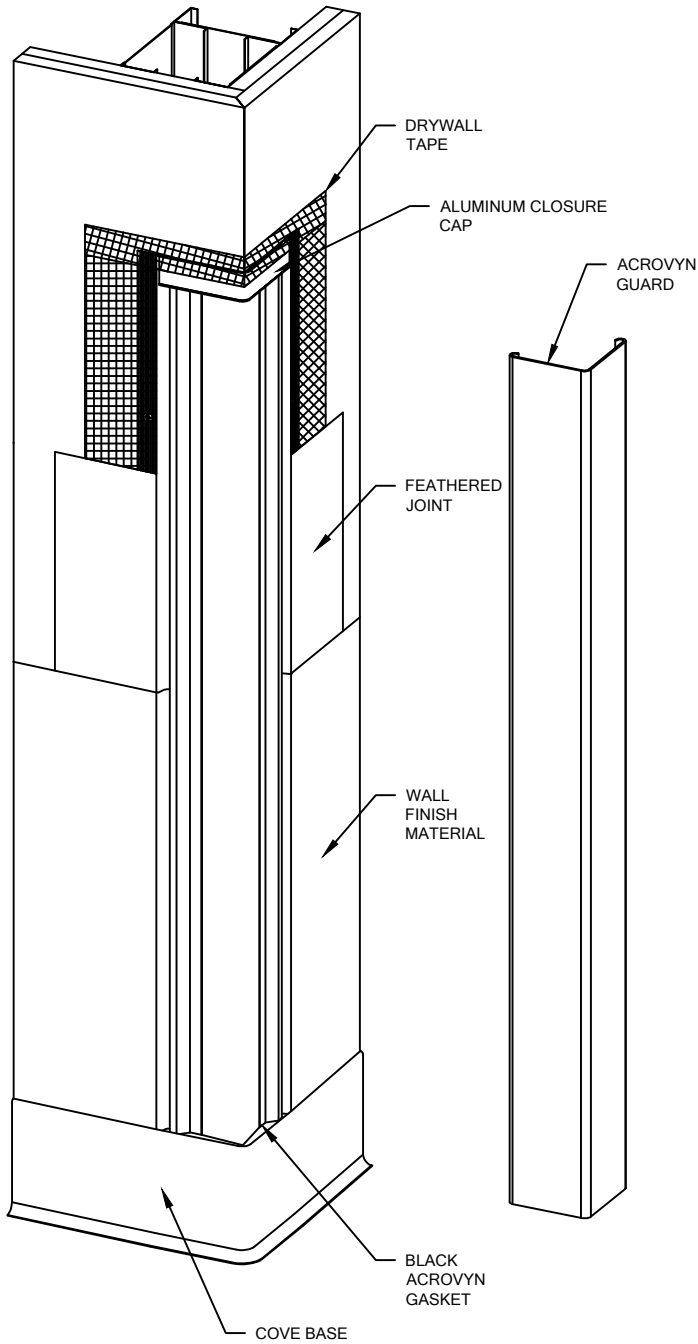
**PARTIAL HEIGHT**

**2 HOUR FIRE RATED  
CORNER GUARDS**



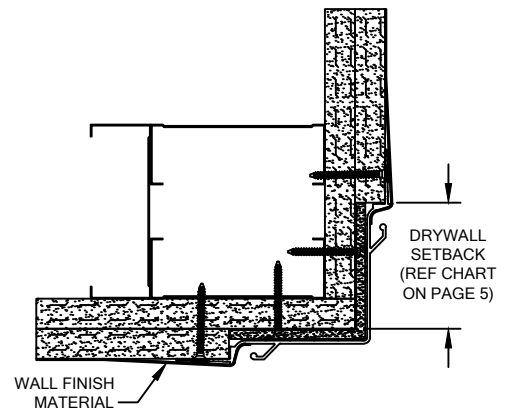
DRYWALL SETBACK CHART				
FS-10RN	FS-10MRN	FS-20RN	SFS-10RN	SFS-20RN
2 5/8" [66.7mm]	2 13/16" [71.4mm]	2 5/8" [66.7mm]	1 5/8" [41.3mm]	1 5/8" [41.3mm]

**2 HOUR FIRE RATED  
CORNER GUARDS**



**PARTIAL HEIGHT INSTALLATION**

1. ALL FLUSH MOUNTED 'FIRE RATED' CORNER GUARDS ARE SHIPPED WITH ALUMINUM RETAINERS AND ACROVYN COVERS CUT TO LENGTH AND FACTORY DRILLED HOLES IN THE RETAINER. THE FIRE BARRIER IS SHIPPED 1/2" [12.7mm] LONGER THAN THE RETAINER.
2. THE SPECIFIED BLOCK-OUT (SEE BELOW) DIMENSIONS FOR EACH CORNER GUARD ASSEMBLY MUST BE MAINTAINED, TO ENSURE THE FIRE-RATED INTEGRITY OF THE SPECIFIED WALL CONSTRUCTION!!! PRIOR TO INSTALLATION, THE BLOCK-OUT DIMENSION AT EACH CORNER GUARD LOCATION SHOULD BE CHECKED AND CORRECTED, IF NECESSARY. THE OPENING MUST ALSO BE CLEANED AND FREE OF DUST PRIOR TO THE INSTALLATION OF THE FIRE RATED CORNER GUARD.
3. SECURE THE FACTORY FABRICATED FIRE BARRIER MATERIAL IN THE OPENING BY INSTALLING THE REQUIRED FASTENERS THROUGH THE PRE-PUNCHED HOLES IN THE FIRE BARRIER, INTO THE STEEL STUDS.
4. ALIGN EACH RETAINER WITH THE CORNER AND SECURE EACH LEG THROUGH WALL INTO METAL STUDS USING THE SPECIFIED FASTENERS. MAKE SURE THE RETAINER REMAINS PLUMB WITH THE FINISH FLOOR.
5. INSERT ALUMINUM BASE CLOSURE AT THE BASE OF THE RETAINER AND SECURE THE PLASTIC GASKET ON TOP BY REMOVING THE PROTECTIVE COVERING TO EXPOSE THE TRANSFER ADHESIVE. ALIGN GASKET WITH OUTSIDE EDGE.
6. A 1" [25.4mm] CLOSURE CAP IS TO BE INSTALLED AT TOP OF RETAINER ON PARTIAL HEIGHT GUARDS, FOLLOWING PROCEDURES SIMILAR TO STEP 5.
7. APPLY 2" [50.8mm] JOINT TAPE ALONG THE EDGE OF THE DRYWALL AND THE ALUMINUM RETAINER. FINISH THE INSTALLATION BY APPLYING A UNIFORM FEATHERED JOINT AT THIS LOCATION AS PER STANDARD CONSTRUCTION PRACTICES. ALLOW TO DRY AND THEN SAND AS REQUIRED. APPLY ADDITIONAL COATS, AS REQUIRED, TO PROVIDE A UNIFORM AND NEAT FINISH. APPLY THIS PROCEDURE TO ANY "CLOSURE" CAPS USED ON PARTIAL HEIGHT INSTALLATIONS.
8. FINISH WALL SURFACE AS SPECIFIED. BE SURE THAT THE SELECTED FINISH IS APPLIED TO THE INSIDE SURFACE OF THE REAR "CONTOURED" PORTION OF THE ALUMINUM RETAINER.
9. FINISH INSTALLATION BY SNAPPING THE ACROVYN COVER ONTO THE RETAINER.



6/15/10