

ACROVYN WALL PANEL SYSTEM
DEMOUNTABLE Z-CLIP

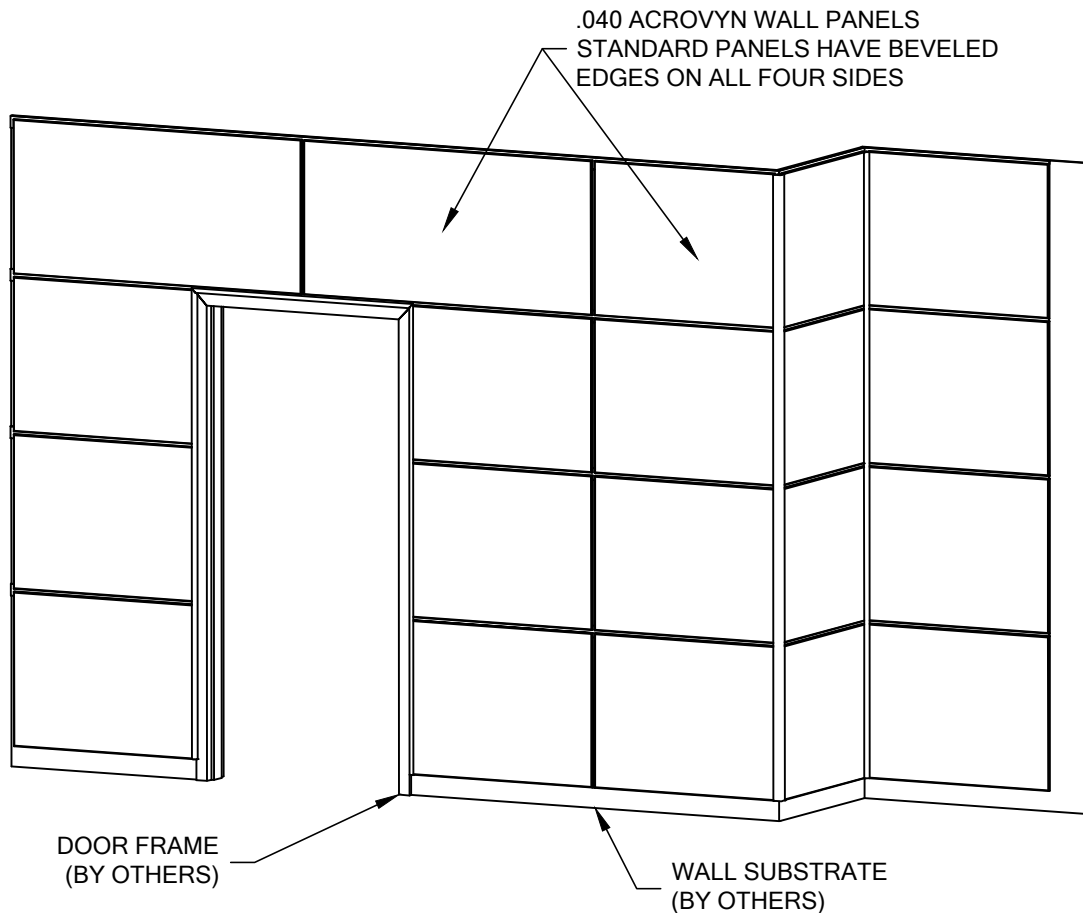
PLEASE READ THESE INSTRUCTIONS THOROUGHLY PRIOR TO BEGINNING THE ACROVYN Z-CLIP WALL PANEL INSTALLATION.

THIS INSTRUCTIONS SHEET IS INTENDED TO PROVIDE A SPECIFIC GUIDE TO FOLLOW FOR THE INSTALLATION OF ACROVYN Z-CLIP WALL PANELS. CONTAINED WITHIN IS THE TECHNICAL INFORMATION AND INSTALLATION TECHNIQUES REQUIRED TO COMPLETE AN EFFICIENT, NEAT AND LONG-LASTING INSTALLATION.

ACROVYN Z-CLIP WALL PANELS MUST BE INSTALLED IN ACCORDANCE WITH THESE INSTRUCTIONS! FAILURE TO FOLLOW THESE INSTRUCTIONS MAY VOID ANY PRODUCT WARRANTIES AND RESULT IN AN UNSUCCESSFUL INSTALLATION. FOR SPECIFIC QUESTIONS REGARDING THE INSTALLATION OF ACROVYN Z-CLIP WALL PANELS PLEASE CALL US AT (800) 233-8493 OR EMAIL IWPTECHSUPPORT@C-SGROUP.COM. IN CANADA CALL (888) 895-8955. FOR MORE INFORMATION ON ACROVYN WALL PANELS PLEASE SEE OUR WEBSITE AT www.c-sgroup.com/acrovyn/wall-panels.

IMPORTANT NOTES - DO NOT OVERLOOK

- MATERIALS MUST REACH 65°F (18°C) MIN TO 75°F (24°C) MAX 24 HOURS PRIOR TO INSTALLATION. THIS IS ESSENTIAL TO MINIMIZE EXPANSION AND CONTRACTION OF MATERIAL.
- FOR DRYWALL/PLASTER WALL CONSTRUCTION, IT IS RECOMMENDED FOR FASTENERS TO BE ENGAGED INTO METAL/WOOD STUDS TO MAINTAIN PULL-OUT STRENGTH.
- AF-6 PLASTIC ANCHORS SHOULD SEAT FLUSH WITH GYPSUM WALL.



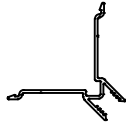
ACROVYN WALL PANEL SYSTEM

DEMOUNTABLE Z-CLIP

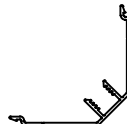
COMPONENTS & WALL FASTENERS



EDGE RETAINER
(21A008000)



OUTSIDE CORNER RETAINER
(21A009000)



INSIDE CORNER RETAINER
(21A010000)



REVEAL RETAINER
(21A006000)



WALL MOUNTING CLIP
(21A005000)



PANEL MOUNTING CLIP
(21F004000)



ACROVYN EDGE/REVEAL
MOLDING
(21N019xxx)



ACROVYN REVEAL MOLDING
(21N018xxx)



ACROVYN EDGE MOLDING
(21N020xxx)



ACROVYN OUTSIDE
CORNER MOLDING
(21N021xxx)



ACROVYN INSIDE
CORNER MOLDING
(21N022xxx)



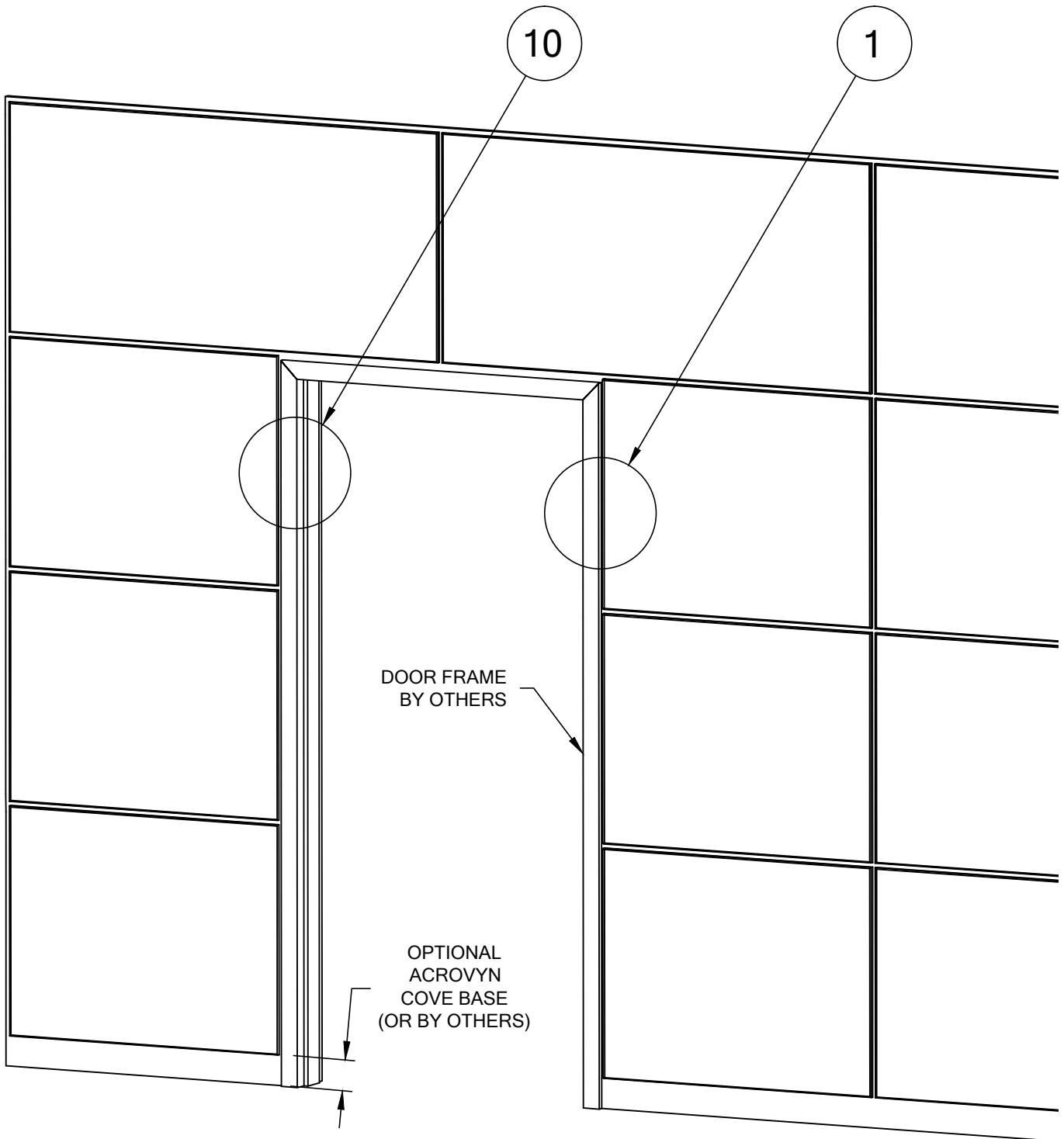
FASTENER #1
6.3mm X 10.5mm
EURO SCREW
(90H467002)

WALL CONDITION	SPECIFIED FASTENER	DRILL DIAMETERS		C/S PART NUMBER
		WALL	RETAINER	
STEEL STUD/GYPSUM WALL	#6 X 1 5/8" BUGLE HEAD SMS	N/A	3/16"	90H079002
CONCRETE/CONCRETE BLOCK	#10 X 1 1/2" PHILLIP PANHEAD SMS AF-6 PLASTIC ANCHOR	1/4"	9/32"	90H189002 90H039004
WOOD STUD/GYPSUM WALL	#6 X 1 5/8" BUGLE HEAD SMS	N/A	3/16"	90H079002

ACROVYN WALL PANEL SYSTEM
DEMOUNTABLE Z-CLIP

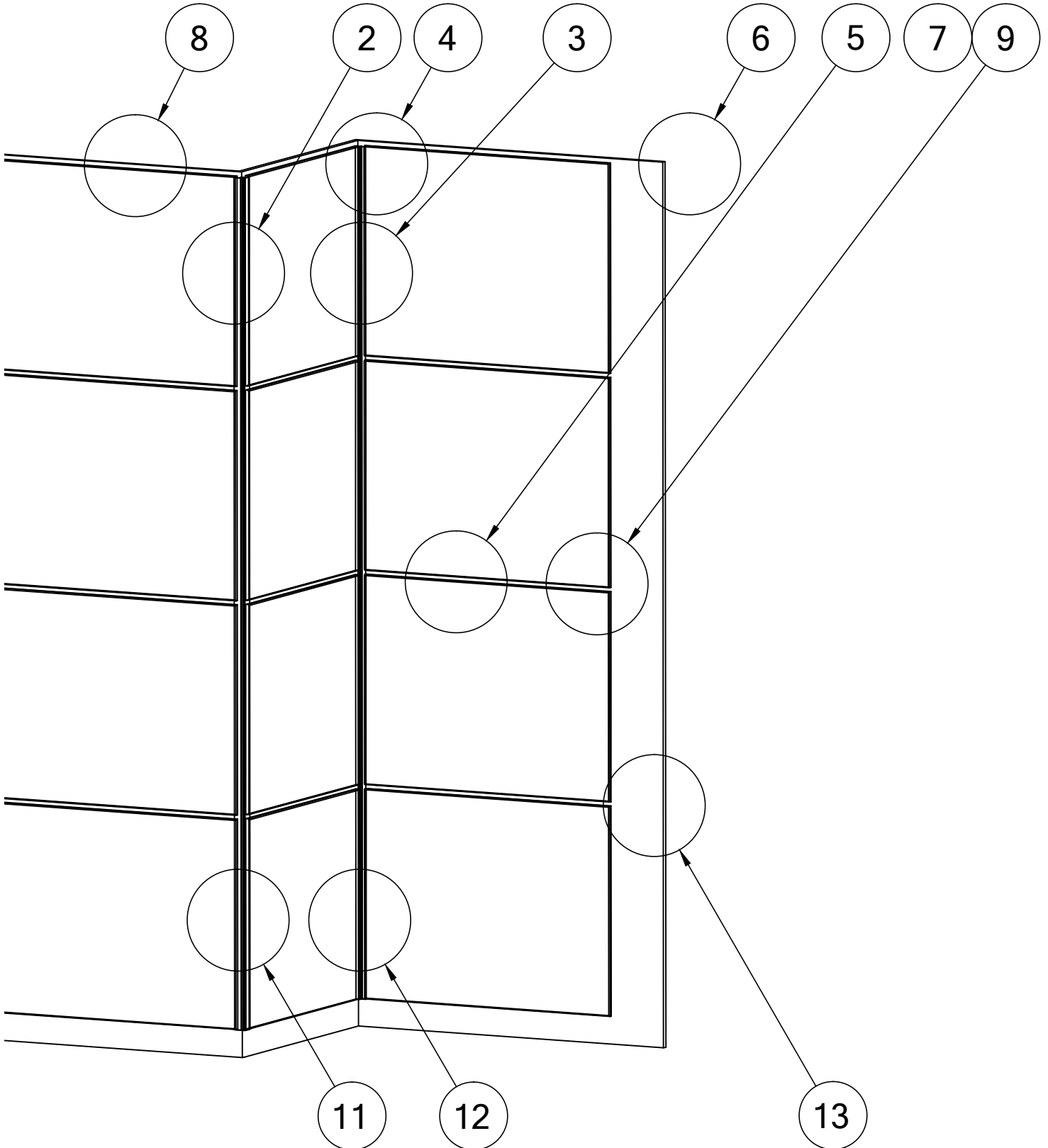
TYPICAL WALL INSTALLATION

NOTE: NUMBERS POINTING TO AREAS OF THE DRAWING REFER TO DETAILS USED THROUGHOUT THE INSTRUCTIONS.



ACROVYN WALL PANEL SYSTEM
DEMOUNTABLE Z-CLIP

TYPICAL WALL INSTALLATION



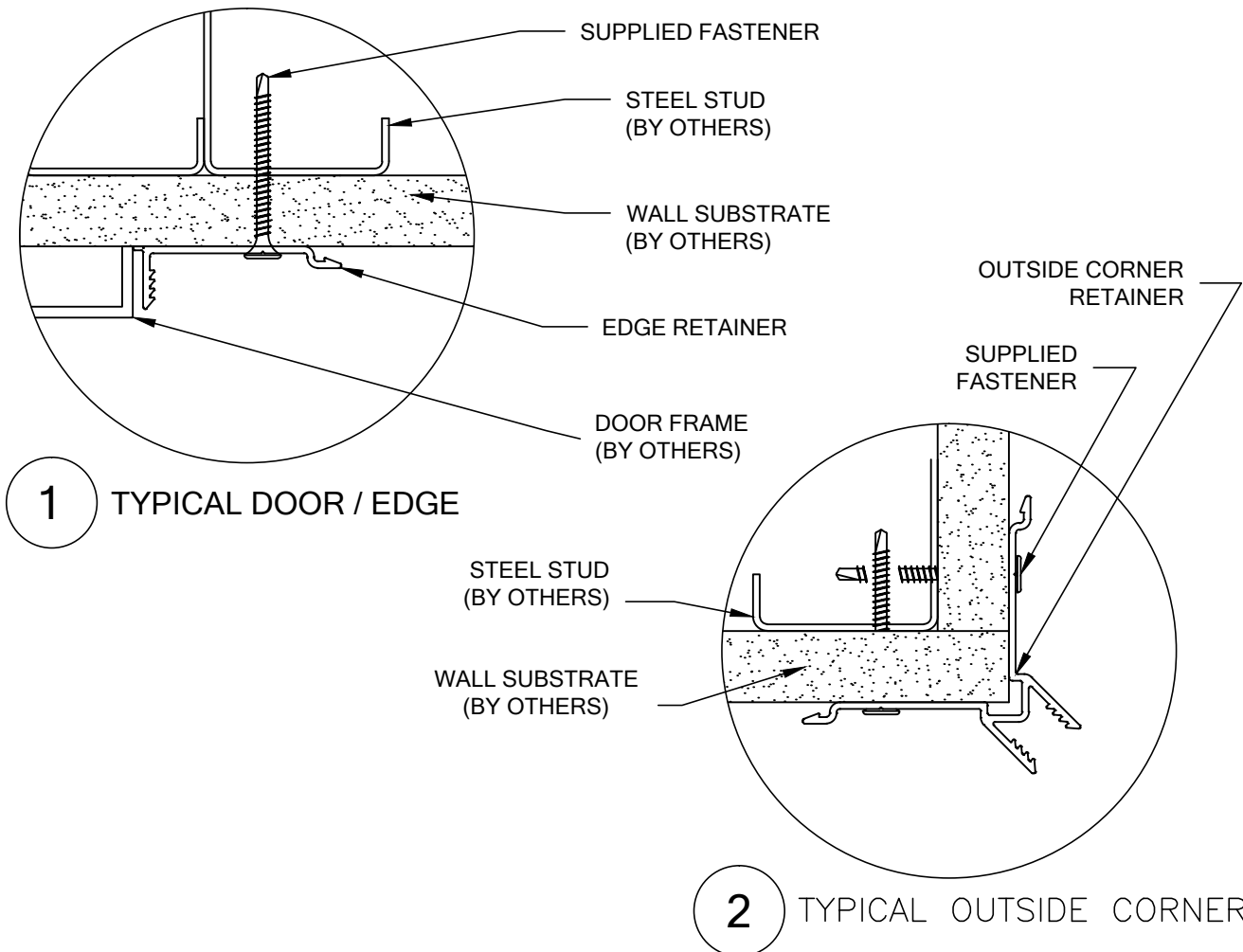
ACROVYN WALL PANEL SYSTEM
DEMOUNTABLE Z-CLIP

1. MEASURE WALLS TO DETERMINE LAYOUT AND PLACEMENT OF WALL PANELS. THIS SYSTEM IS DESIGNED TO COVER FIELD CUT PANEL EDGES THAT END AT DOOR FRAMES AND INSIDE/OUTSIDE CORNERS.

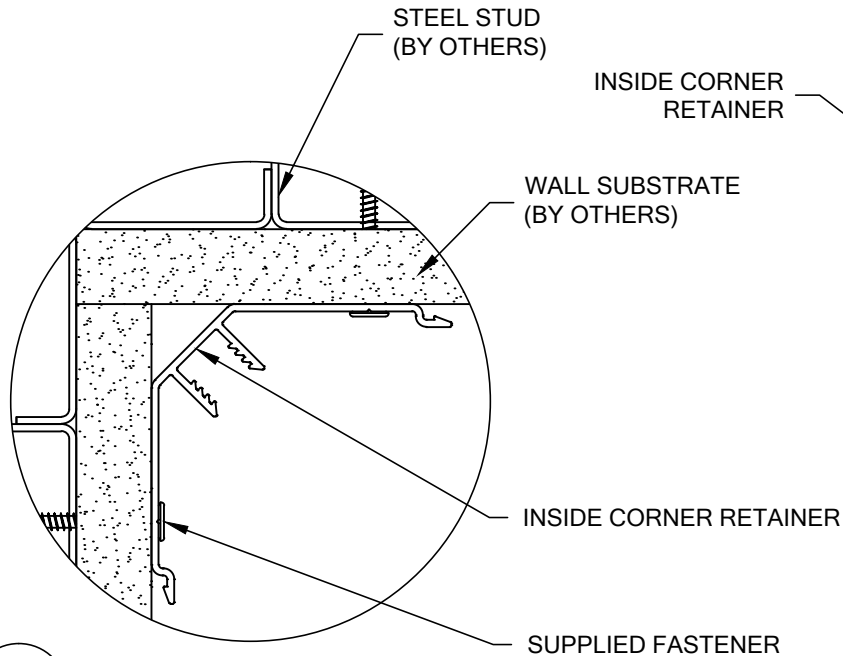
NOTE: REFER TO DRAFTING DETAILS FOR SPECIFIC REVEAL WIDTH AND WALL MOUNTING CLIP LOCATION.

2. CUT ALL EDGE, OUTSIDE CORNER AND INSIDE CORNER ALUMINUM RETAINERS TO LENGTH. PRE-DRILL CLEARANCE HOLES IN THE RETAINERS 16" [406.4mm] O.C. AS REQUIRED. REFERENCE CHART ON PAGE 2 FOR CORRECT DRILL DIAMETERS. INSTALL EACH SECTION OF RETAINER USING APPROPRIATE HARDWARE (SEE DETAILS 1,2 & 3). ALLOW A 2 1/2" [63.5mm] GAP BETWEEN THE CEILING AND THE TOP OF THE CORNER RETAINERS (SEE DETAIL 4). USE A LEVEL TO INSURE ALL RETAINERS ARE LEVEL AND PLUMB. SHIM IF NECESSARY.

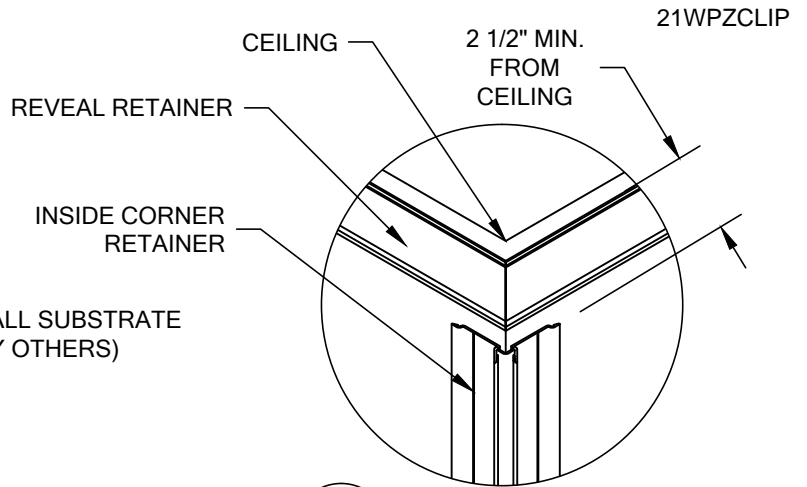
OPTIONAL: IF ANY OF THESE THREE RETAINERS CANNOT BE ATTACHED DIRECTLY TO A STUD, INSTALL AS AN ASSEMBLY WITH THE EDGE/REVEAL MOLDING (SEE STEP 5). SNAP FIT EDGE/REVEAL MOLDING TO AN ALUMINUM RETAINER AND CUT TO SIZE AS AN ASSEMBLY. ADD A 3/8" [9.5mm] CLEARANCE HOLE IN THE EDGE/REVEAL MOLDING IN LINE WITH THE RETAINER'S PILOT HOLE. BE SURE MOUNTING HOLES ARE ONLY LOCATED IN AREAS COVERED BY WALL PANELS.



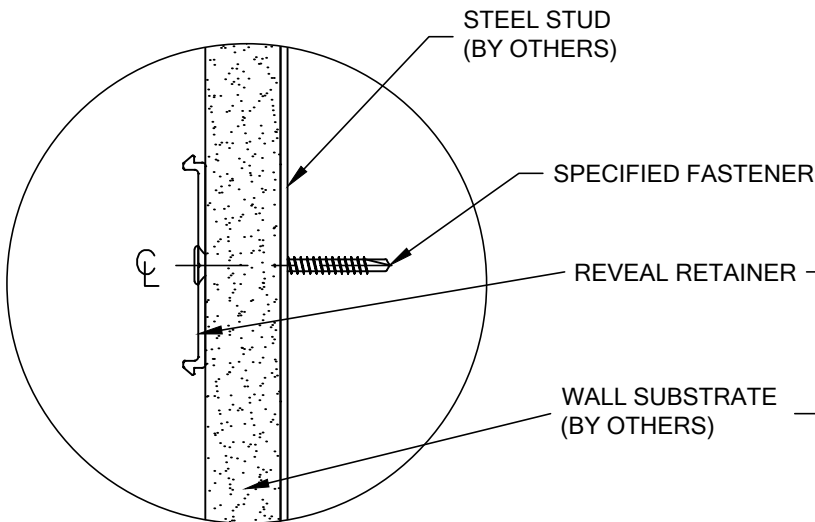
ACROVYN WALL PANEL SYSTEM
DEMOUNTABLE Z-CLIP



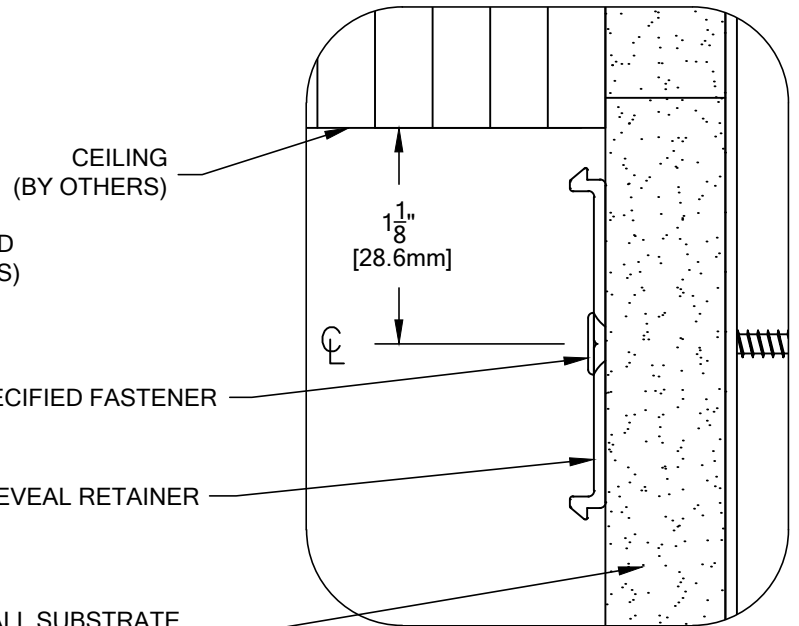
3 TYPICAL INSIDE CORNER



4 TYPICAL REVEAL RETAINER INSIDE CORNER AT CEILING



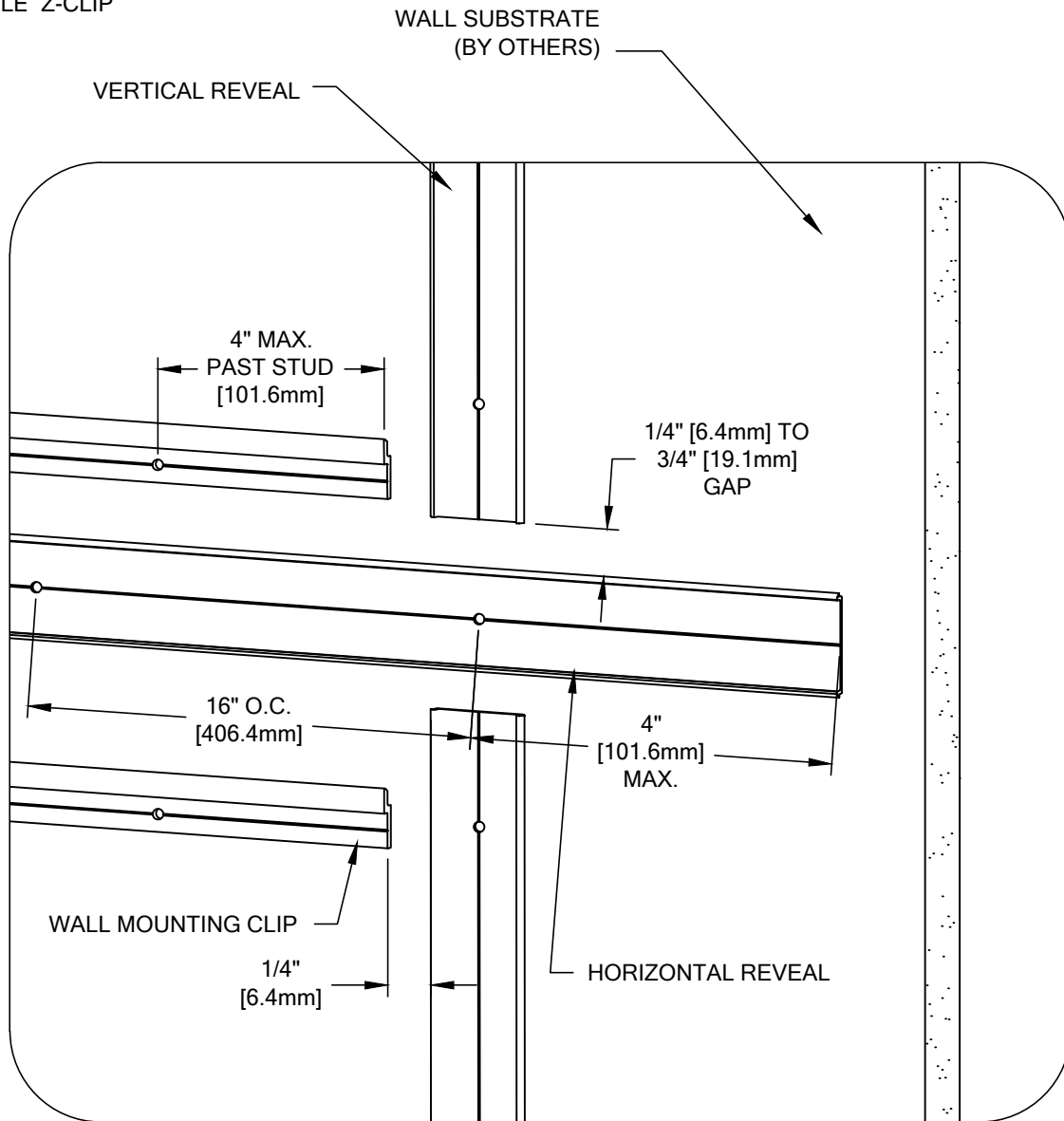
5 TYPICAL REVEAL RETAINER



6 TYPICAL REVEAL RETAINER AT CEILING

- CUT ALL HORIZONTAL AND VERTICAL ALUMINUM REVEAL RETAINERS TO LENGTH. PRE-DRILL CLEARANCE HOLES IN THE RETAINER 16" [406.4mm] O.C. AS REQUIRED. REFERENCE CHART ON PAGE 2 FOR CORRECT DRILL DIAMETERS. INSTALL EACH SECTION OF REVEAL RETAINER USING APPROPRIATE HARDWARE (SEE DETAILS 5,6,& 7). USE A LEVEL TO INSURE ALL REVEAL RETAINERS ARE LEVEL AND PLUMB, SHIM IF NECESSARY. ALLOW A 1/4" [6.4mm] TO 3/4" [19.1mm] GAP BETWEEN END OF VERTICAL RETAINER AND HORIZONTAL RETAINER (SEE DETAIL 7).

ACROVYN WALL PANEL SYSTEM
DEMOUNTABLE Z-CLIP

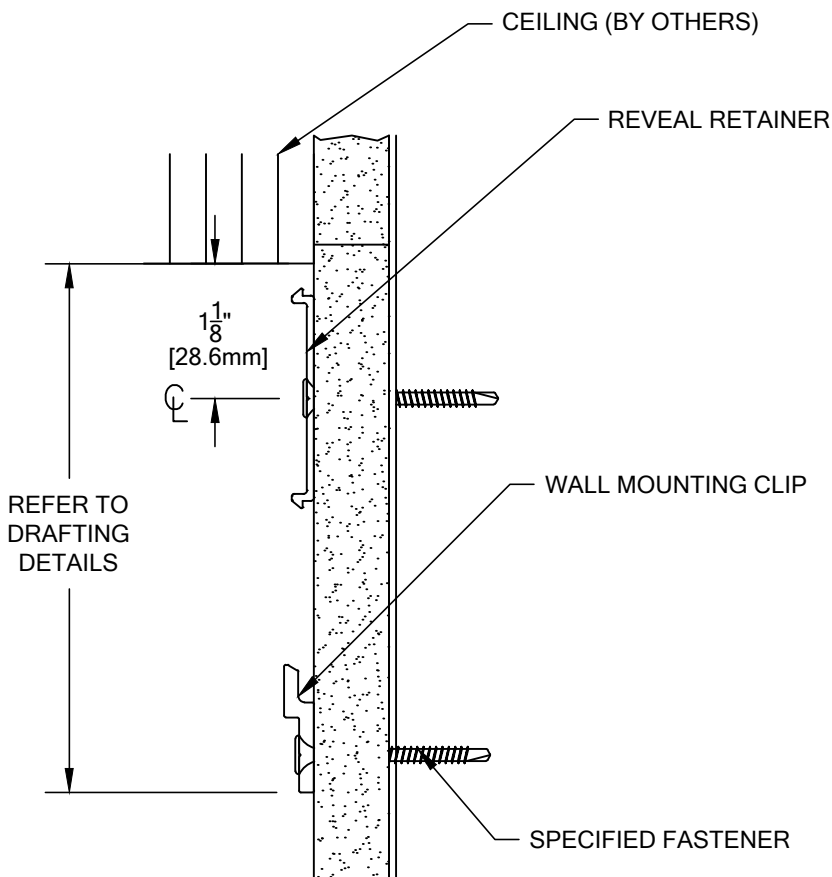


7 TYPICAL WALL MOUNTING CLIPS AND REVEAL RETAINER LAYOUT

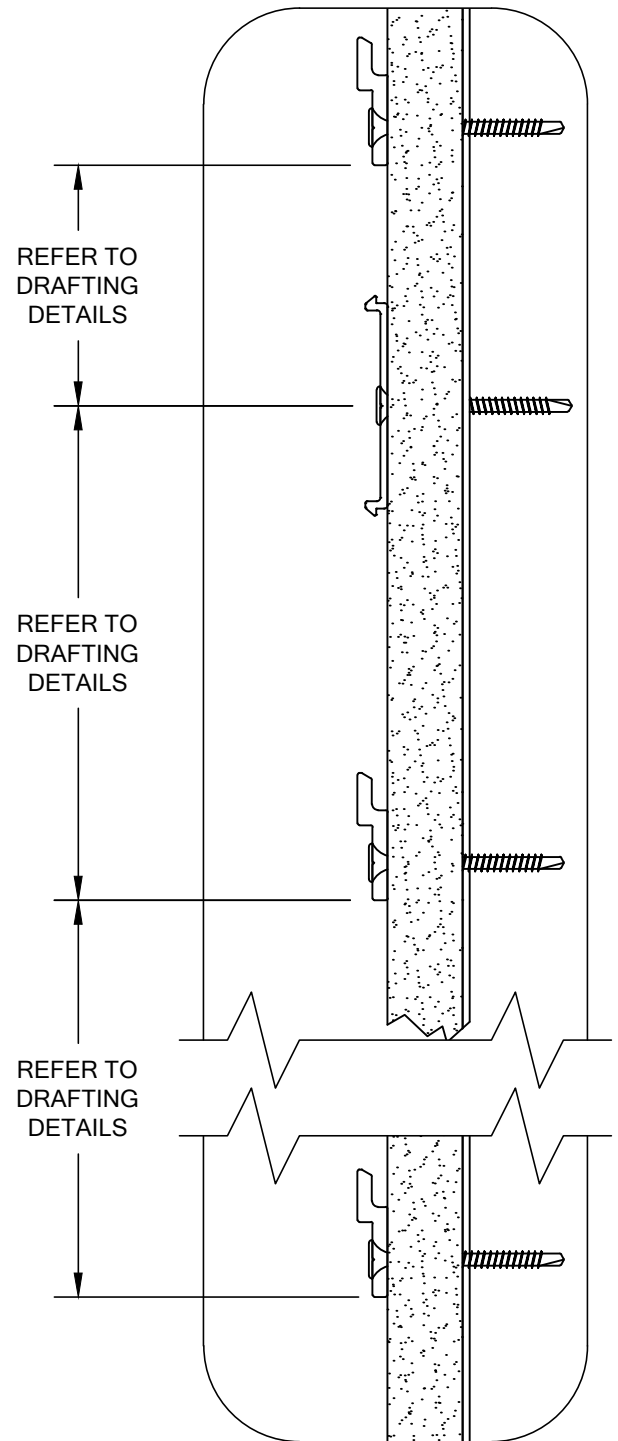
- CUT ALL WALL MOUNTING CLIPS TO LENGTH. PRE-DRILL CLEARANCE HOLES IN WALL MOUNTING CLIPS 16" [406.4mm] O.C. AS REQUIRED. REFERENCE CHART ON PAGE 2 FOR CORRECT DRILL DIAMETERS. INSTALL EACH SECTION OF WALL MOUNTING CLIPS USING APPROPRIATE HARDWARE (SEE DETAILS 8 & 9). USE A LEVEL TO INSURE WALL MOUNTING CLIPS ARE LEVEL.

WARNING: THE LOCATION OF WALL MOUNTING CLIPS IS CRITICAL TO A PROPERLY SPACED REVEAL WIDTH. BE SURE THESE CLIPS ARE ATTACHED TO A STUD, 16" [406.4mm] O.C., BECAUSE THEY SUPPORT THE FULL WEIGHT OF THE WALL PANELS. IF WALL MOUNTING CLIPS WILL EXCEED 4" [101.6mm] PAST A STUD A #10 x 1 1/2" PHILLIPS PAN HEAD SMS WITH AF-6 PLASTIC ANCHOR MUST BE USED.

ACROVYN WALL PANEL SYSTEM
DEMOUNTABLE Z-CLIP

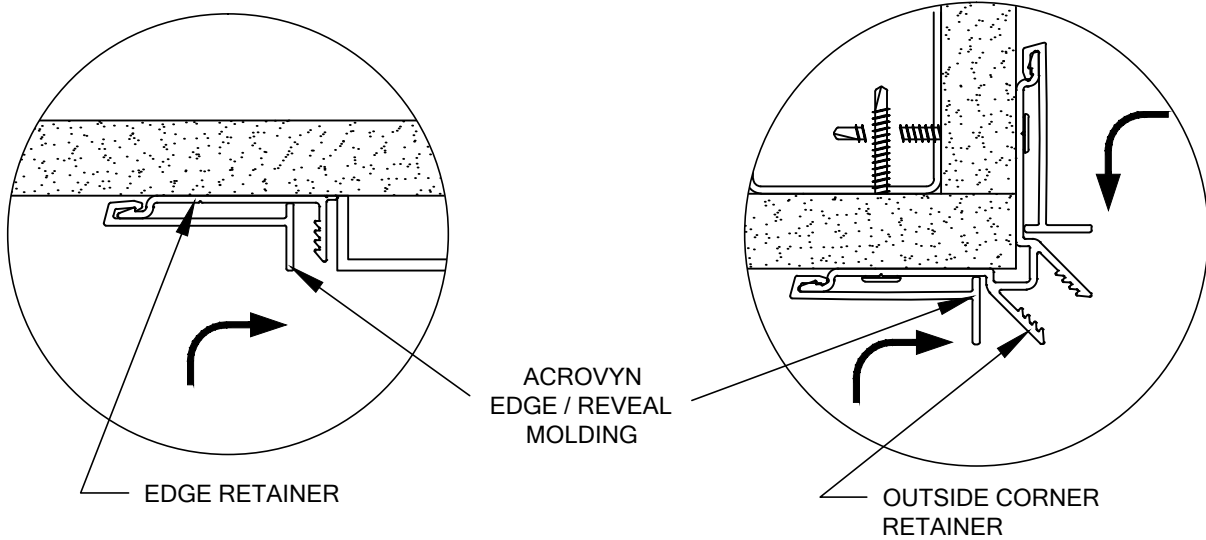


8 REVEAL RETAINER AND WALL MOUNTING CLIP AT CEILING



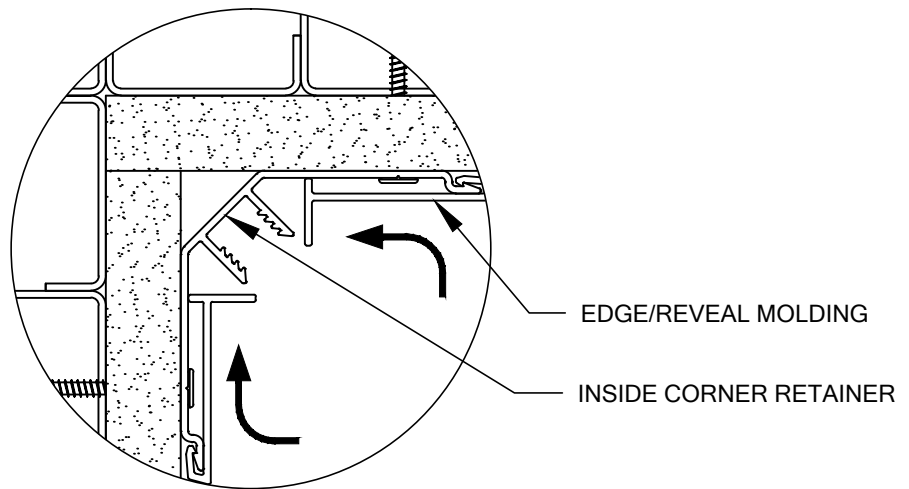
9 TYPICAL ALUMINUM WALL MOUNTING CLIPS AND REVEAL RETAINER

**ACROVYN WALL PANEL SYSTEM
DEMOUNTABLE Z-CLIP**



10 TYPICAL ALUMINUM EDGE RETAINER WITH ACROVYN EDGE / REVEAL MOLDING

11 TYPICAL ALUMINUM OUTSIDE CORNER RETAINER WITH ACROVYN EDGE / REVEAL MOLDINGS

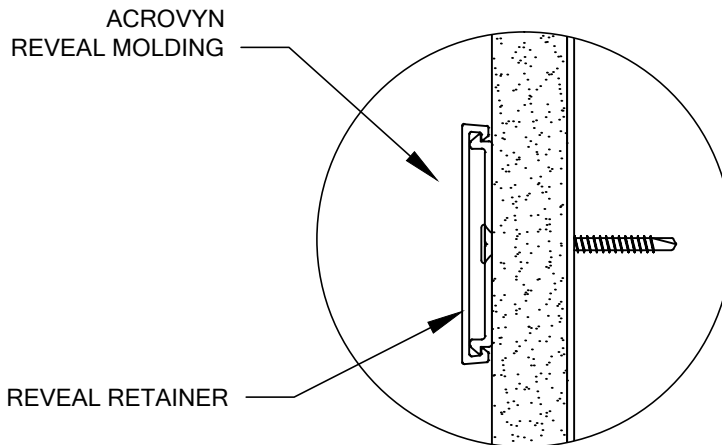


12 TYPICAL ALUMINUM INSIDE CORNER RETAINER WITH ACROVYN EDGE / REVEAL MOLDINGS

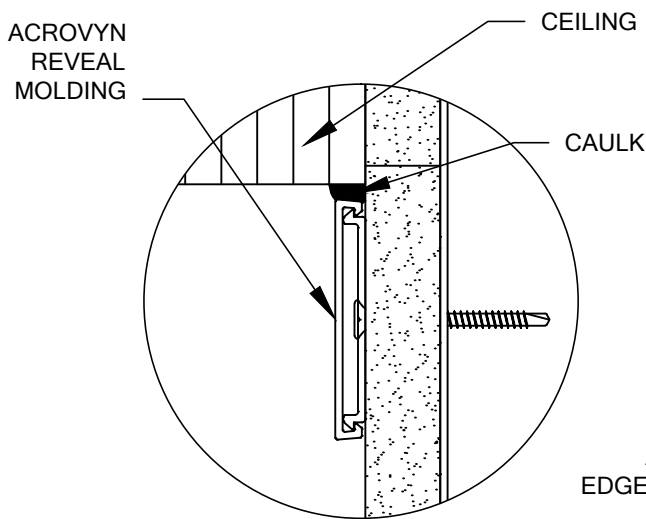
5. CUT TO SIZE AND SNAP FIT EDGE/REVEL MOLDING ON ALUMINUM RETAINERS (SEE DETAILS 10, 11 & 12).

NOTE: ALL REVEAL EDGES TO BE TIGHT AND SQUARE AGAINST ADJACENT REVEAL MOLDING.

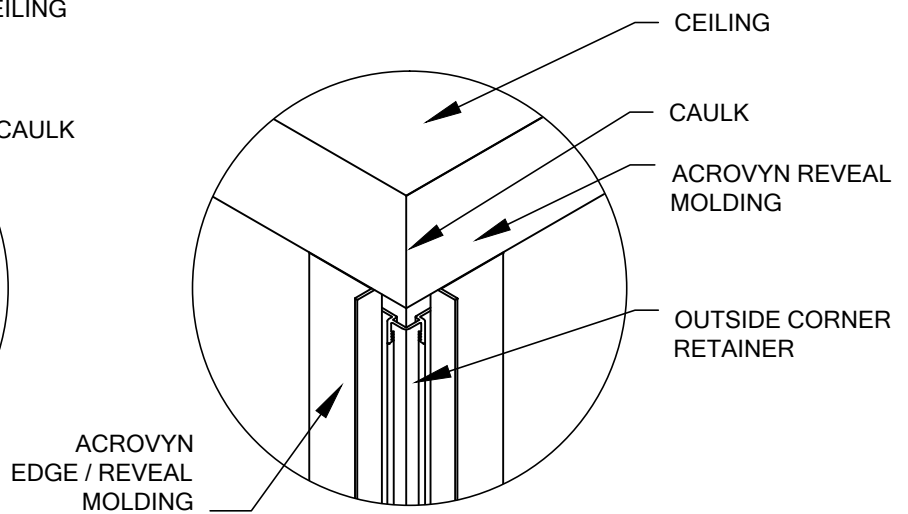
ACROVYN WALL PANEL SYSTEM
DEMOUNTABLE Z-CLIP



13 TYPICAL REVEAL RETAINER WITH ACROVYN REVEAL MOLDING



14 CAULK AT CEILING



15 CAULK AT CORNER

6. CUT TO SIZE AND SNAP FIT ALL HORIZONTAL REVEAL MOLDINGS ON ALUMINUM RETAINERS (SEE DETAIL 13).

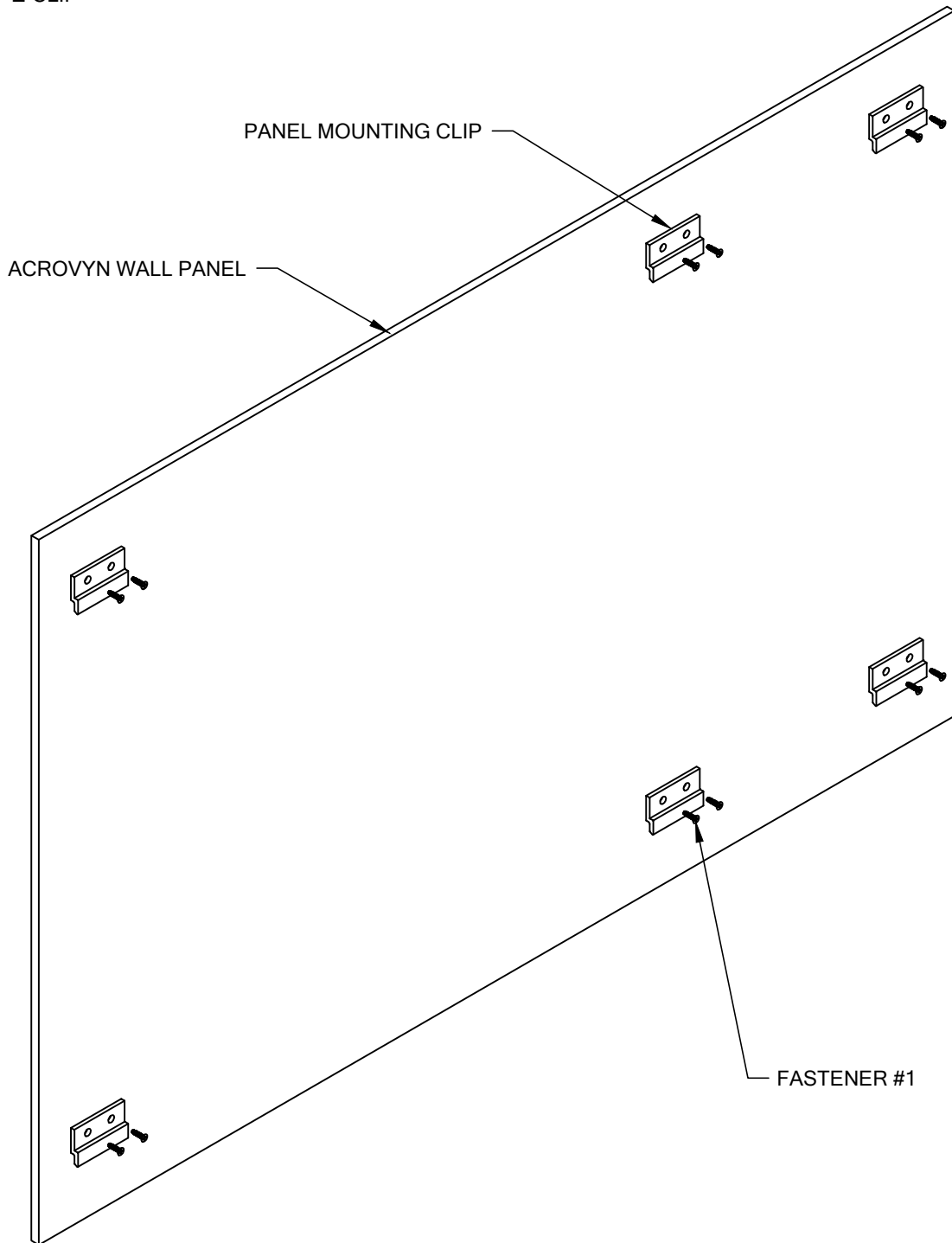
NOTE: ALL REVEAL EDGES TO BE TIGHT AND SQUARE AGAINST ADJACENT REVEAL MOLDING.

7. APPLY COLOR MATCHED CAULK BETWEEN CEILING AND TOP HORIZONTAL REVEAL MOLDING (SEE DETAIL 14). WHEN COMPLETE, APPLY COLOR MATCHED CAULK AT TOP INSIDE AND OUTSIDE CORNER JOINTS (SEE DETAIL 15).

8. CUT TO SIZE AND SNAP FIT ALL VERTICAL REVEAL MOLDINGS ON ALUMINUM RETAINERS. BE SURE TO COMPLETE STEP 6 BEFORE CUTTING AND FITTING VERTICAL REVEAL MOLDING.

NOTE: ALL REVEAL EDGES TO BE TIGHT AGAINST ADJACENT REVEAL MOLDING.

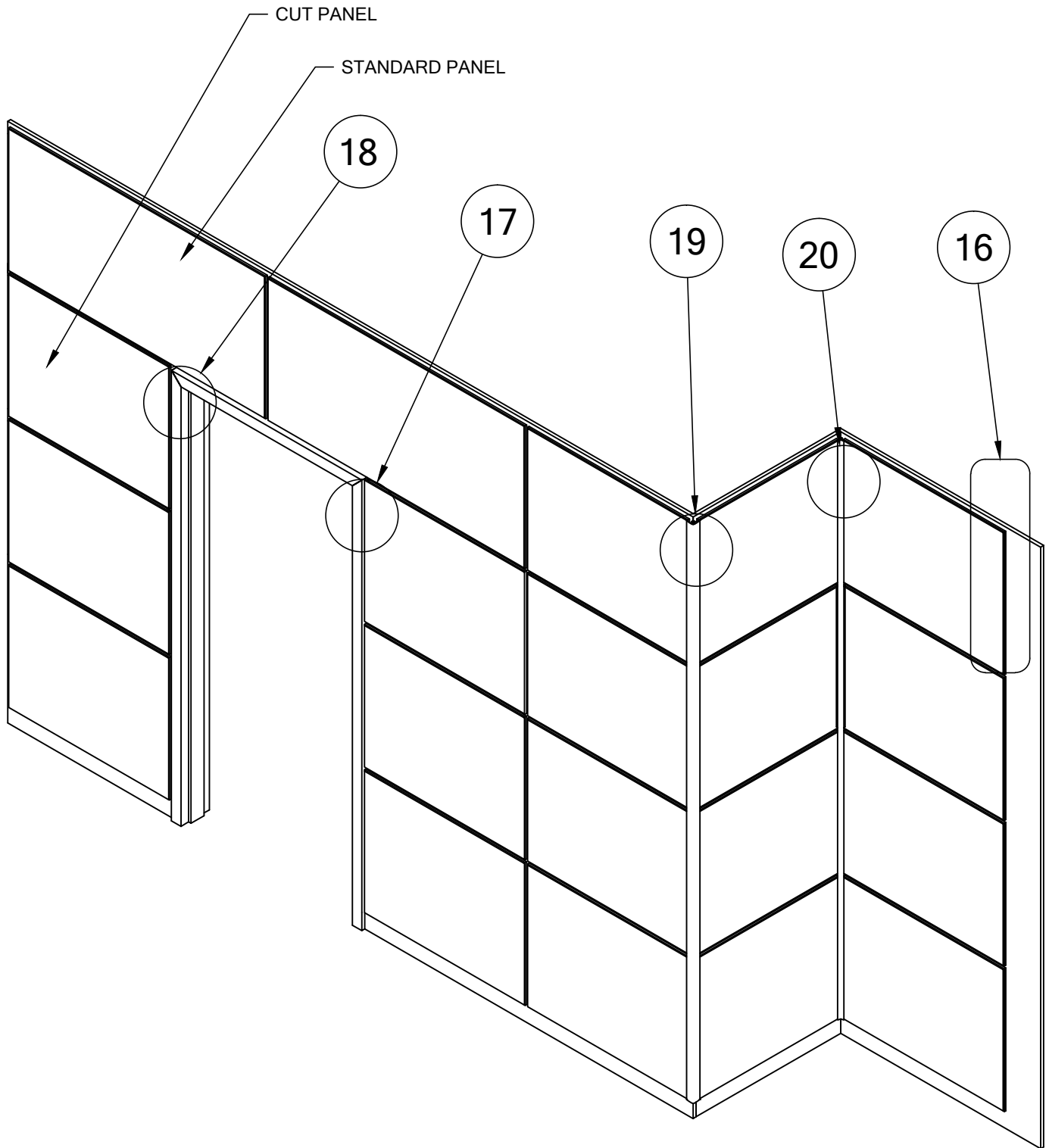
ACROVYN WALL PANEL SYSTEM
DEMOUNTABLE Z-CLIP



9. INSTALL FACTORY SUPPLIED PANEL MOUNTING CLIPS USING 6.3mm x 10.5mm EURO SCREWS IN PREDRILLED HOLES IN THE BACK OF PANELS. THE TOP OF THE PANEL SHOULD BE CLEARLY MARKED TO ENSURE THAT THE PANEL MOUNTING CLIPS ARE PROPERLY ORIENTED.

NOTE: TO RELOCATE PANEL MOUNTING CLIP HOLES ON CUT PANELS, REFER TO PAGE 15.

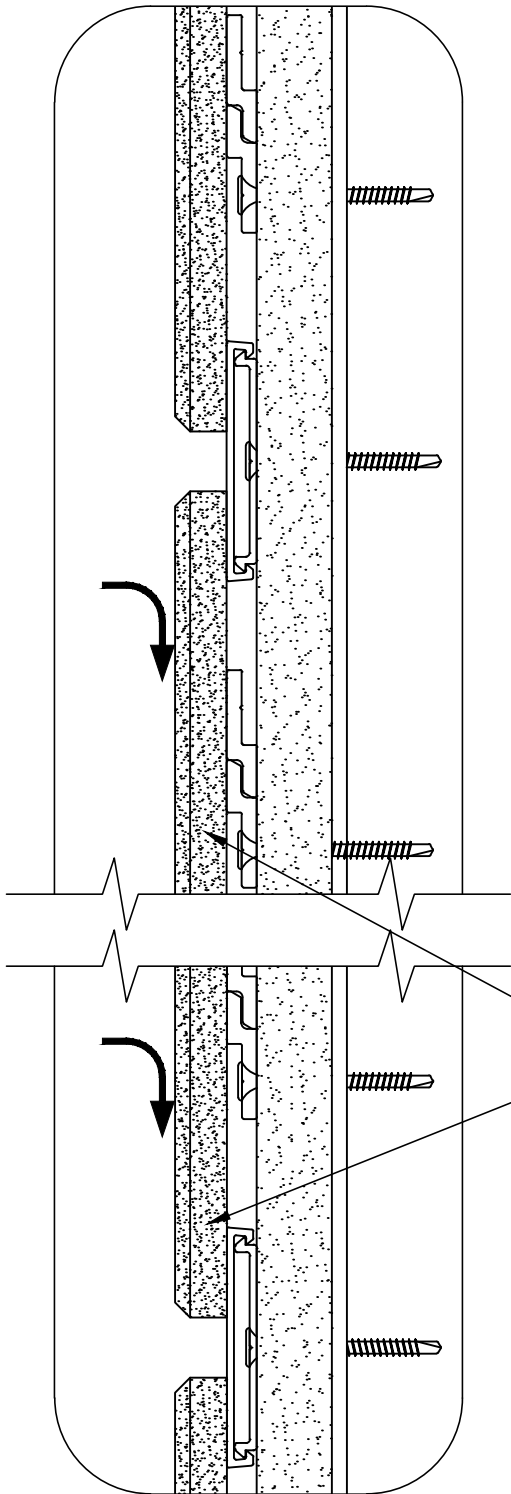
ACROVYN WALL PANEL SYSTEM
DEMOUNTABLE Z-CLIP



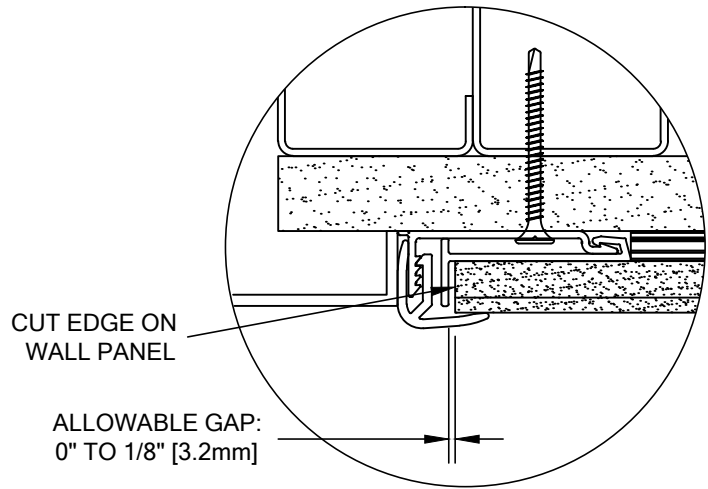
- 10. INSTALL ALL STANDARD SIZE WALL PANELS (SEE DETAIL 16).
- 11. FIELD CUT ANY WALL PANELS THAT END ON EDGE/REVEAL MOLDING ATTACHED AT DOOR FRAMES, OUTSIDE AND INSIDE CORNERS. BE SURE NOT TO EXCEED ALLOWABLE GAP SHOWN IN DETAIL 17.

NOTE: TO RELOCATE THE PANEL MOUNTING CLIP HOLES ON CUT PANELS, REFER TO PAGE 15.

**ACROVYN WALL PANEL SYSTEM
DEMOUNTABLE Z-CLIP**



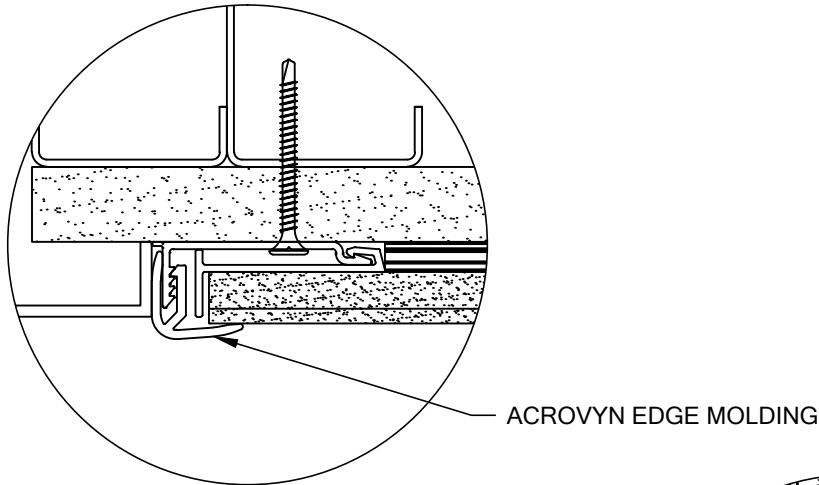
16 TYPICAL MOUNTING OF WALL PANEL



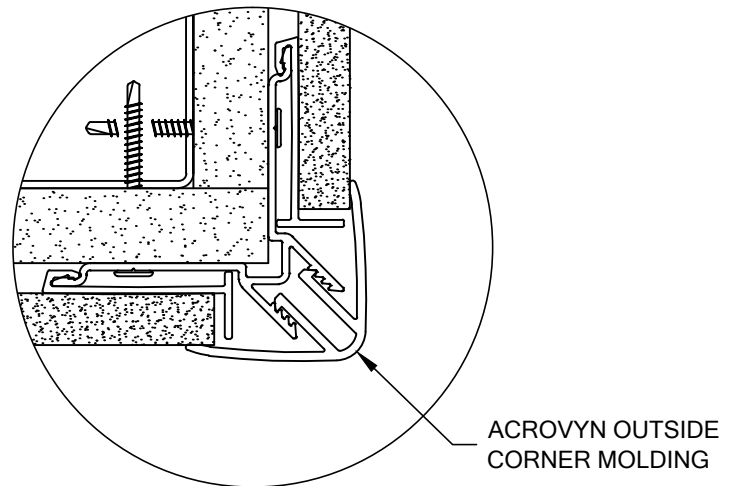
17 TYPICAL CUT EDGE OF WALL PANEL

.040 ACROVYN CLAD WALL PANEL USING FACTORY SUPPLIED PANEL MOUNTING CLIPS

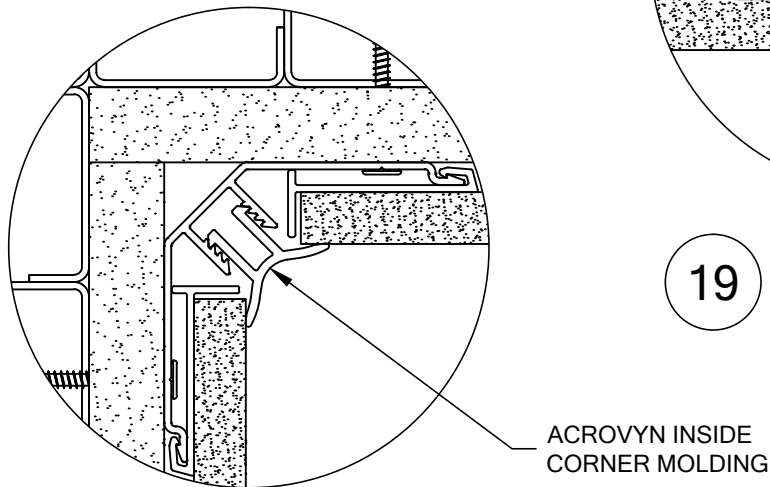
**ACROVYN WALL PANEL SYSTEM
DEMOUNTABLE Z-CLIP**



18 TYPICAL ACROVYN
EDGE MOLDING



19 TYPICAL ACROVYN
OUTSIDE CORNER MOLDING



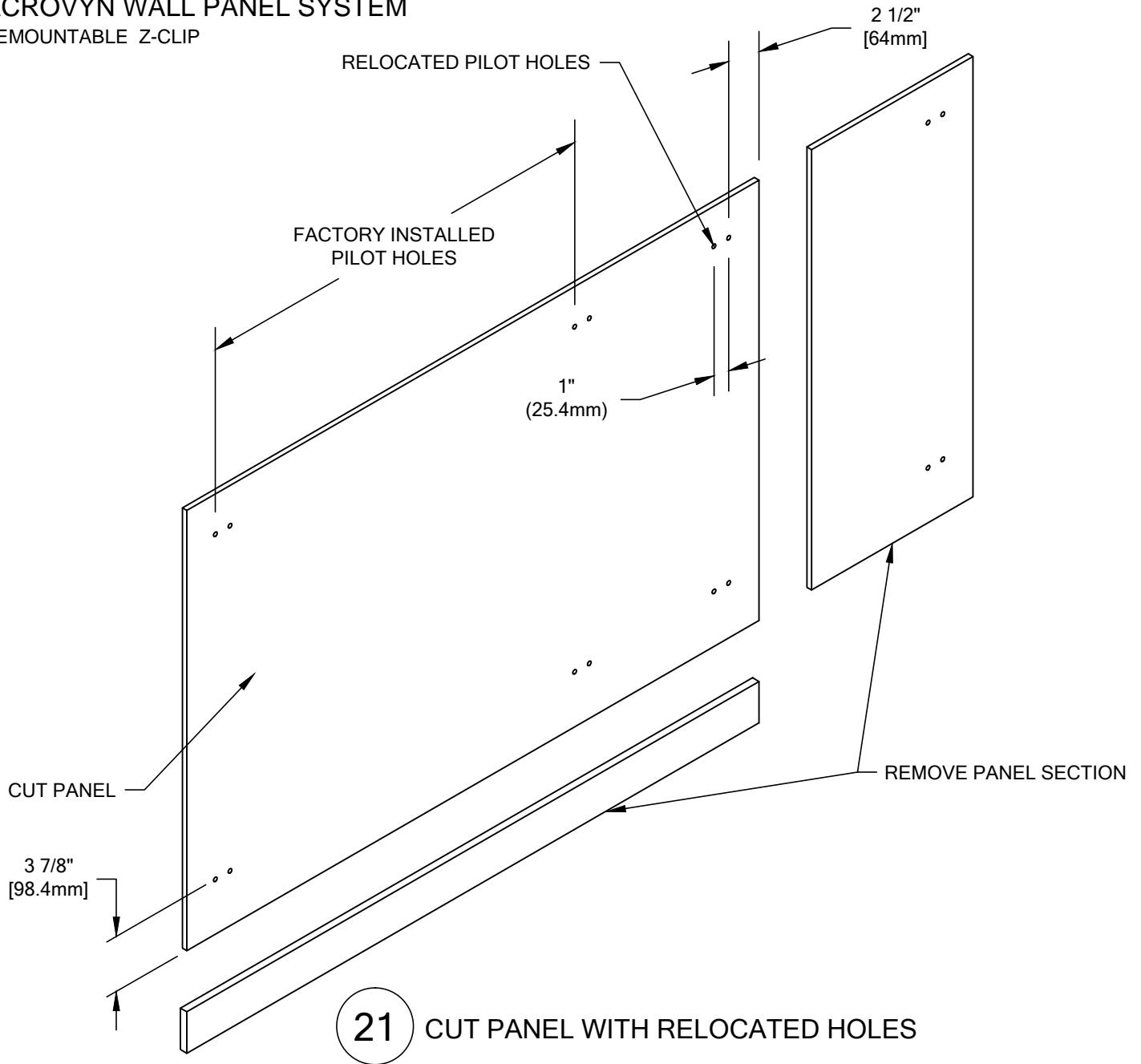
20 TYPICAL ACROVYN
INSIDE CORNER MOLDING

12. CUT TO SIZE AND SNAP FIT EDGE, OUTSIDE AND/OR INSIDE CORNER MOLDINGS IN THE ALUMINUM RETAINERS (SEE DETAILS 18, 19 & 20).

NOTE: IF CHIPPING OCCURS FROM CUTTING THE ACROVYN MOLDING, ORIENT THE PROFILE SO THE SNAP FITTING TEETH ARE FIRST TO BE CUT BY THE SAW BLADE.

NOTE: TO ENSURE A QUALITY MITER ON EDGE MOLDING, SNAP FIT MOLDING TO A SHORT PIECE OF ALUMINUM EDGE RETAINER, THEN CUT.

ACROVYN WALL PANEL SYSTEM
DEMOUNTABLE Z-CLIP



21 CUT PANEL WITH RELOCATED HOLES

FOR CUT PANELS, LOCATE OUTER PANEL MOUNTING CLIP HOLES 2 1/2" [63.5mm] FROM CUT EDGE. PILOT HOLE SIZE TO BE 5/32" [3.9mm] DIAMETER X 3/8" [9.5mm] DEEP. HOLE LOCATION FROM TOP EDGE OF PANEL SHOULD REMAIN THE SAME AS THE FACTORY PRE-DRILLED PILOT HOLES.

WARNING: USE A DRILL STOP TO PREVENT DRILLING THROUGH THE ACROVYN SURFACE. DO NOT DRILL PILOT HOLE DEEPER THAN 3/8" [9.5mm]. IF THE HOLES IS TOO SHALLOW OR NOT CLEARED OF CHIPS THE PILOT HOLE WILL BULGE AND PREVENT THE CLIP FROM SEATING FLUSH.

10/19/11