

**WOOD SARATOGA SERIES
WITH VERTICAL STILES**

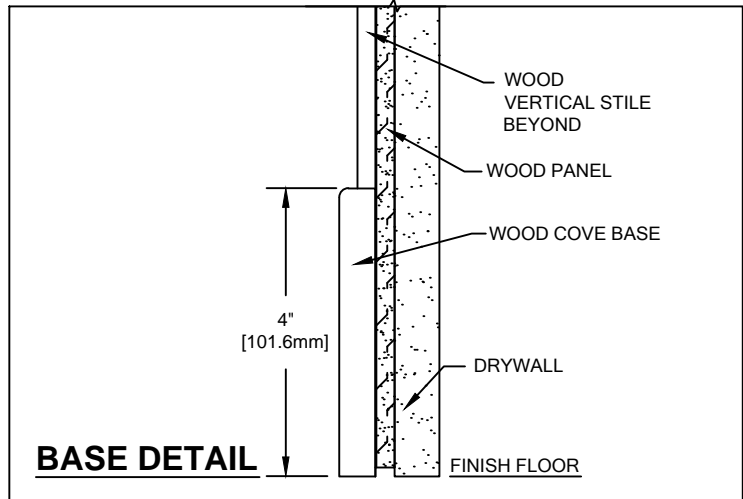
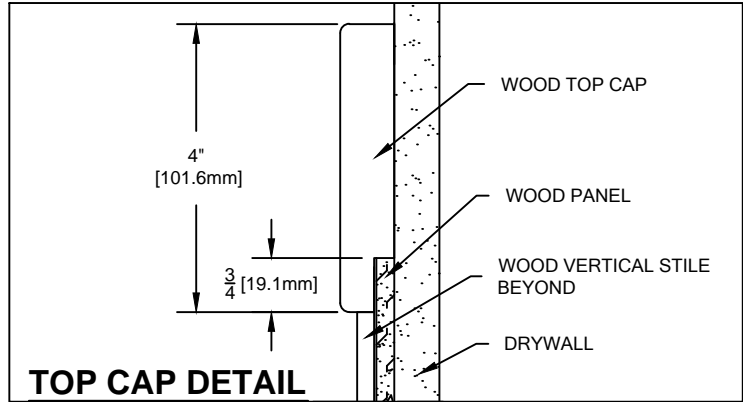
PLEASE READ

PLEASE READ THESE INSTRUCTIONS THOROUGHLY PRIOR TO BEGINNING THE WOOD SARATOGA SERIES INSTALLATION!

THIS INSTRUCTION SHEET IS INTENDED TO PROVIDE A SPECIFIC GUIDE TO FOLLOW FOR THE INSTALLATION OF WOOD SARATOGA SERIES. CONTAINED WITHIN IS THE THE TECHNICAL INFORMATION AND INSTALLATION TECHNIQUES REQUIRED TO COMPLETE AN EFFICIENT, NEAT AND LONG-LASTING INSTALLATION.

WOOD SARATOGA SERIES MUST BE INSTALLED IN ACCORDANCE WITH THESE INSTRUCTIONS! FAILURE TO FOLLOW THESE INSTRUCTIONS MAY VOID ANY PRODUCT WARRANTIES AND RESULT IN AN UNSUCCESSFUL INSTALLATION. FOR SPECIFIC QUESTIONS REGARDING THE INSTALLATION OF WOOD SARATOGA SERIES PLEASE CALL THE FACTORY AT (800) 233-8493 OR IN CANADA (888) 895-8955.

INSPECT ALL MATERIALS FOR DAMAGE OR MISSING PARTS. IF YOU DISCOVER DAMAGED OR MISSING MATERIALS, IN THE USA PLEASE NOTIFY THE FACTORY AT (800) 233-8493, AND IN CANADA (888) 895-8955.



DO's & DON'Ts

DO READ ALL INSTRUCTIONS FOR ADHESIVE AND INSTALLATION PROCEDURES, PRIOR TO BEGINNING INSTALLATION.

DO MAKE SURE MATERIALS ARE KEPT FLAT, CLEAN AND IN A DRY AREA BEFORE ACCLIMATING THEM.

DO MAKE SURE MATERIALS ARE ACCLIMATED IN AN ENVIRONMENT OF 65°F - 75°F (18°C - 24°C) FOR AT LEAST 24 HOURS PRIOR TO BEGINNING THE INSTALLATION.

DO MAINTAIN PANEL ORIENTATION THROUGHOUT THE ENTIRE INSTALLATION.

DO WIPE THE BACK OF THE WALL PANEL WITH A CLEAN, DAMP CLOTH BEFORE INSTALLATION, TO REMOVE ANY DUST AND DIRT.

DO WIPE THE WALL TO REMOVE ANY DUST OR DIRT.

DO REFER TO THE MSDS FOR DISPOSAL OF EXTRA ADHESIVE.

DON'T INSTALL WOOD SARATOGA SERIES WHEN ROOM TEMPERATURE IS BELOW 65°F (18°C) OR ABOVE 75°F (24°C).

DON'T USE METHYL ETHYL KETONE (MEK) OR ANY SIMILAR SOLVENTS TO CLEAN WOOD SARATOGA SERIES SURFACES.

DON'T USE SCOTCH-BRITE PADS, STEEL WOOL OR SIMILAR CLEANING PADS ON WOOD SARATOGA SERIES.

DON'T STORE OR STAND WOOD PANELS ON END.

DON'T RUSH THE INSTALLATION!

**WOOD SARATOGA SERIES
WITH VERTICAL STILES**

TOOLS & EQUIPMENT

BY CONTRACTOR

- 4'-0" OR 6'-0" LEVEL
- TAPE MEASURE
- TABLE SAW WHENEVER AVAILABLE
- CIRCULAR SAW (w/ CARBIDE TOOTH BLADE)
- STRAIGHT EDGE OR GUIDE FOR USE WITH CIRCULAR SAW
- JIGSAW (w/ CARBIDE TOOTH BLADE)
- POWER MITER SAW* (w/ CARBIDE TOOTH BLADE)
*FOR USE WHEN INSTALLING WAINSCOT MOLDING
- 29 oz. CAULKING GUN
- BRAD NAILS

SUPPLIED BY CONSTRUCTION SPECIALTIES

- M-1 STRUCTURAL ADHESIVE/SEALANT
- COLOR MATCHED FIL-STIK

I. WALL PREPARATION

IF THE EXISTING WALL FINISH IS WALLPAPER, HEAVY GAUGE SHEET, LINOLEUM OR A SIMILAR MATERIAL, IT SHOULD BE INSPECTED FOR LOOSE AREAS. IF LOOSE AREAS ARE DISCOVERED THEY SHOULD BE REMOVED, NAILED OR STAPLED SECURELY TO MAINTAIN PROPER ADHESION.

ALL NEW OR EXISTING WALL SUBSTRATES SHOULD BE EXAMINED, CLEAN, SMOOTH, DRY, AND FREE OF OILS, LOOSE PAINT AND/OR JOINT COMPOUND DUST PRIOR TO INSTALLATION.

NOTE: WOOD SARATOGA SYSTEM IS DESIGNED SO THAT ALL BUTT JOINTS ARE COVERED BY A VERTICAL STILE. FAILURE TO DO SO WILL BE THE RESPONSIBILITY OF THE INSTALLER.

II. PANEL SIZING

ALL WOOD PANELS ARE SHIPPED IN STOCK SIZES. THE WOOD PANELS SHOULD BE CUT USING EITHER A TABLE SAW OR CIRCULAR SAW WITH AN 80-100 TOOTH CARBIDE TIPPED SAW BLADE OR EQUIVALENT. ALWAYS USE A STRAIGHT EDGE OR GUIDE TO INSURE STRAIGHT CUTS WHEN USING A CIRCULAR SAW. A JIGSAW SHOULD BE USED WHEN MAKING CUTOUTS SUCH AS ELECTRICAL OUTLETS, FIRE EXTINGUISHER CABINETS, ETC. ALWAYS CUT SO THAT THE BLADE ROTATES INTO THE FINISH SIDE OF THE PANEL OR BACKSIDE UP.

III. INSTALLATION

STARTING PROCEDURE

DETERMINE WHAT THE FINISHED HEIGHT IS TO BE AND ESTABLISH A LEVEL LINE THE ENTIRE LENGTH OF THE RUN. CUT THE WOOD PANEL ACCORDINGLY AND INSTALL FLUSH WITH THE FINISH FLOOR. ESTABLISH A LEVEL LINE AT THE BEGINNING OF EACH NEW RUN OF MATERIAL. REFER TO THE BASE AND TOP CAP DETAILS ON PAGE 1 AND THE LAYOUT VIEW ON PAGE 2 WHICH REFLECT THE PANEL LOCATION IN CONJUNCTION WITH THE BASE AND THE TOP CAP.

PANEL PREPARATION

STARTING AT THE END OF A RUN, CUT THE FIRST PANEL TO SIZE AND MAKE ANY NECESSARY CUTOUTS. DRY FIT THE PANEL PRIOR TO APPLYING THE ADHESIVE. PLACE THE PANEL FACE DOWN ON A WORK TABLE, WHILE PROTECTING THE FINISHED SURFACE, AND WIPE THE BACK WITH A CLEAN DAMP CLOTH TO REMOVE ANY DUST AND DIRT.

ADHESIVE APPLICATION

APPLY A 1/8" BEAD OF CONSTRUCTION ADHESIVE TO THE PANEL. APPLY THE ADHESIVE EVERY 12" [304.8mm] AND AROUND THE ENTIRE PERIMETER MAINTAINING A MAXIMUM 1" SPACE FROM THE EDGE (SEE FIGURE 1). THE BEAD SIZE SHOULD BE INCREASED ON UNEVEN SUBSTRATES TO INSURE FULL ADHESION.

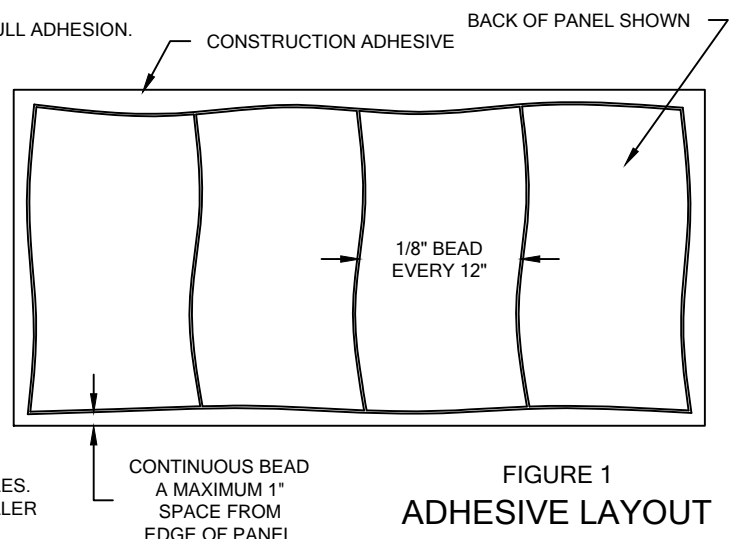
NOTE: INSTALL THE PANEL IMMEDIATELY TO PREVENT THE ADHESIVE FROM "SKINNING OVER". YOU MUST FOLLOW THE INSTRUCTIONS TO GET FULL ADHESION.

PANEL INSTALLATION

DETERMINE THE HIGHEST POINT ON THE FINISH FLOOR AND SNAP A CHALK LINE 1/8" [3.2mm] ABOVE. ALIGN THE BOTTOM OF THE PANELS WITH THE CHALK LINE. ONCE POSITIONED, INSTALL THE PANEL TO SUBSTRATE BY PUSHING IT AGAINST THE WALL AND ROLL FLAT WITH EVEN PRESSURE, ENSURING FULL ADHESIVE TRANSFER.

IMMEDIATELY REMOVE ANY ADHESIVE FROM THE PANEL THAT MAY HAVE ACCIDENTALLY GOTTEN ON THE WOOD PANEL.

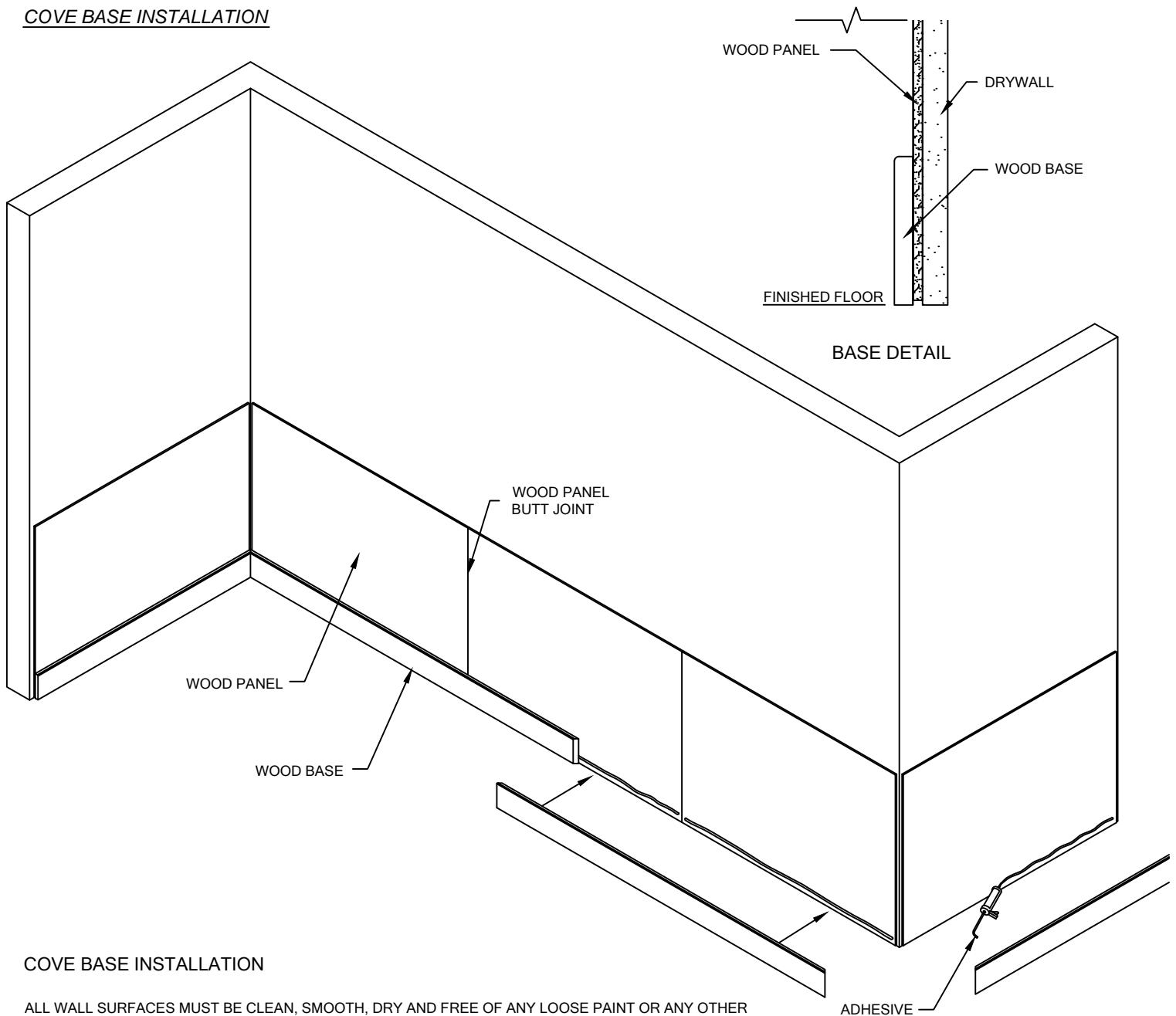
BRAD NAILS MAY BE USED WITHIN A 1/2" OF THE PANEL EDGE TO SECURE THE PANEL IN PLACE. ANY BRAD NAILS PLACED WITHIN THE RECOMMENDED DISTANCE FROM THE EDGE COULD THEN BE CONCEALED BY THE VERTICAL STILES. FOR ANY OTHER BRAD NAILS, IT WOULD BE THE RESPONSIBILITY OF THE INSTALLER TO CONCEAL USING A COLOR MATCHED FIL-STIK.



NOTE: IT WILL BE NECESSARY TO BRACE PANELS TO ENSURE BETTER CONTACT WHEN APPLYING TO IRREGULAR WALL.

**WOOD SARATOGA SERIES
WITH VERTICAL STILES**

COVE BASE INSTALLATION



COVE BASE INSTALLATION

ALL WALL SURFACES MUST BE CLEAN, SMOOTH, DRY AND FREE OF ANY LOOSE PAINT OR ANY OTHER IRREGULARITIES WHICH WOULD PREVENT GOOD ADHESION.

MITER AT INSIDE OR OUTSIDE CORNER AND LAP JOINTS. AT THE END OF A RUN, MEASURE AND CUT FINAL SECTION TO SIZE.

APPLY 1/8" [3.2mm] BEAD OF C/S SUPPLIED CONSTRUCTION ADHESIVE 2" [50.8mm] ABOVE THE BOTTOM EDGE OF THE PREVIOUSLY INSTALLED WOOD PANEL.

STARTING AT INSIDE OR OUTSIDE CORNER, BEGIN INSTALLING THE WOOD BASE. RUB EACH BASE WITH A CLEAN SOFT CLOTH AND APPLY MEDIUM HAND PRESSURE TO ENSURE MAXIMUM ADHESION TO THE WALL SURFACE.

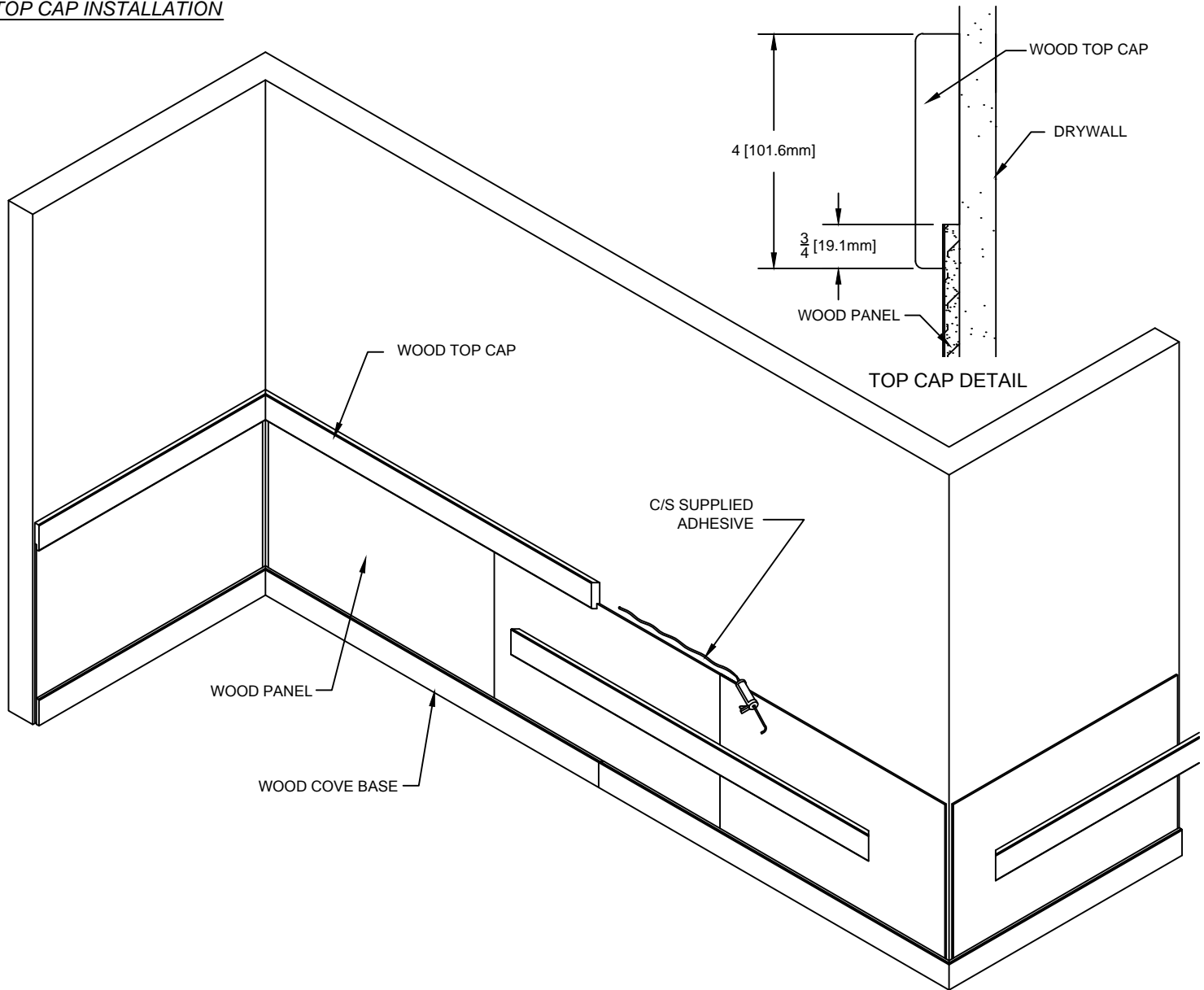
WHILE THE ADHESIVE IS DRYING, DISCRETELY APPLY SEVERAL BRAD NAILS THROUGH THE TRIM INTO THE WALL TO HOLD THE TRIM IN PLACE. IT IS RECOMMENDED TO APPLY THE BRAD NAILS NO LESS THAN 2'-0" [609.6mm] O.C. USE THE C/S SUPPLIED COLOR MATCHED FIL-STIK TO HIDE THE BRAD NAIL.

NOTE: WOOD BASE MAY BE INSTALLED ON FINISHED FLOOR OR SCRIBED TO MATCH. VERTICAL STILE LENGTH WILL DEPEND ON WHICH METHOD WAS USED.

NOTE: ALL WOOD BASE OUTSIDE CORNERS AND INSIDE CORNERS ARE TO BE FIELD MITERED. FOR INSIDE CORNER CONDITIONS A FILE MAY BE USED ON THE BACKSIDE OF THE WOOD BASE TO ACCOMMODATE ANY RADIUS INSTALLED IN THE DRYWALL.

**WOOD SARATOGA SERIES
WITH VERTICAL STILES**

TOP CAP INSTALLATION



WOOD TOP CAP INSTALLATION

ALL WALL SURFACES MUST BE CLEAN, SMOOTH, DRY AND FREE OF ANY LOOSE PAINT OR ANY OTHER IRREGULARITIES WHICH WOULD PREVENT GOOD ADHESION.

ESTABLISH THE WOOD TOP CAP HEIGHT ABOVE THE FINISH FLOOR. USING A CHALK LINE, MAKE A LEVEL LINE TO BE USED AS A GUIDE FOR ALIGNING THE TOP OF THE WOOD TRIM.

CUT WOOD TOP CAP TO LENGTH. ALL OUTSIDE CORNERS AND INSIDE CORNERS ARE TO BE FIELD MITERED. BUTT JOINTS SHOULD BE LAPPED.

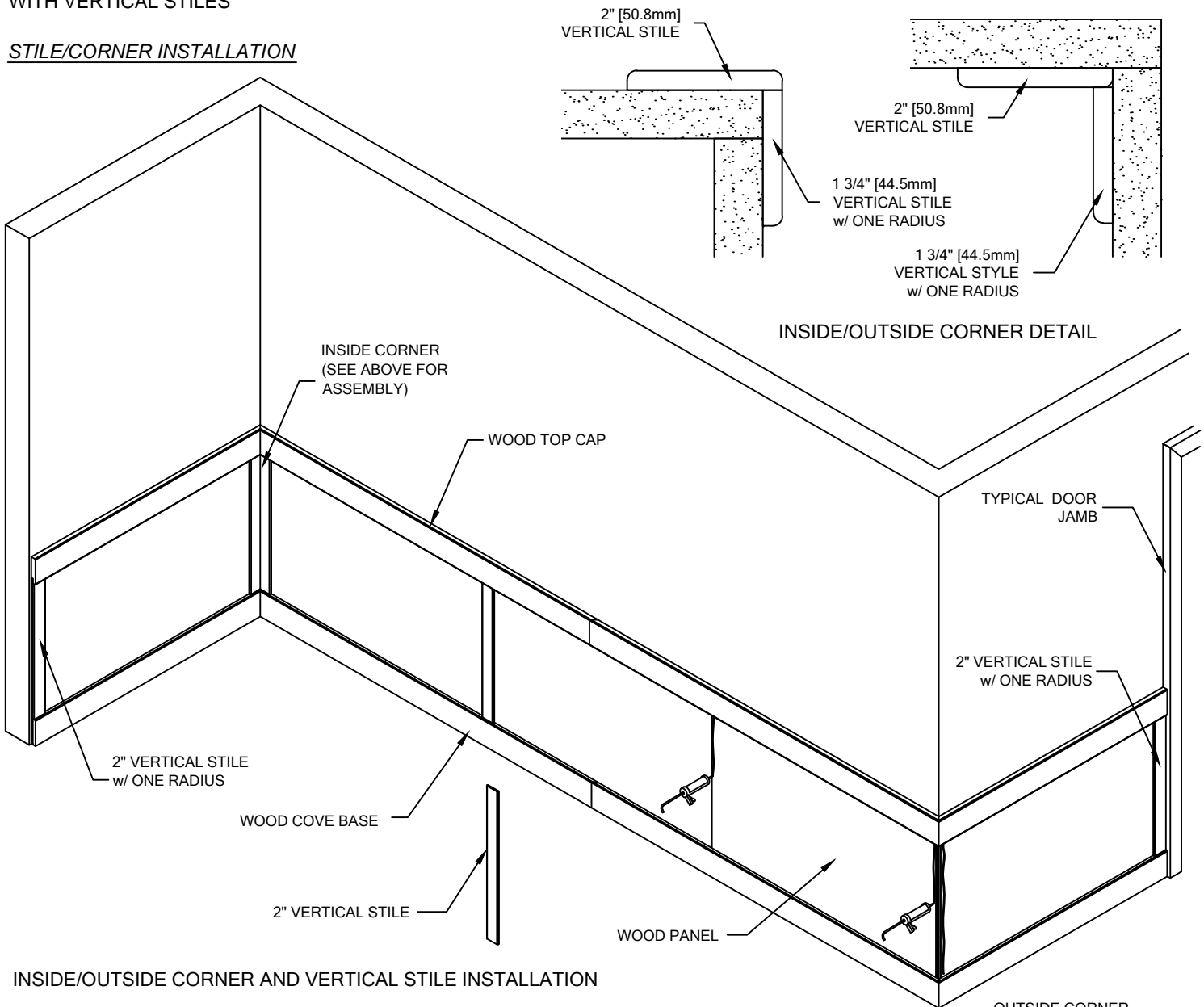
APPLY 1/8" [3.2mm] BEAD OF CONSTRUCTION ADHESIVE 1/2" [12.7mm] ABOVE THE TOP EDGE OF THE INSTALLED WOOD PANEL. STARTING AT ONE END OF THE RUN, INSIDE OR OUTSIDE CORNER, BEGIN INSTALLING THE WOOD TOP CAP. RUB EACH TOP CAP WITH A CLEAN SOFT CLOTH AND APPLY MEDIUM HAND PRESSURE TO ENSURE MAXIMUM ADHESION TO THE WALL SURFACE.

WHILE THE ADHESIVE IS DRYING, DISCRETELY APPLY SEVERAL BRAD NAILS THROUGH THE TOP CAP INTO THE WALL TO HOLD THE TRIM IN PLACE. IT IS RECOMMENDED TO APPLY THE BRAD NAILS NO LESS THAN 2'-0" [609.6mm] O.C. USE THE C/S SUPPLIED COLOR MATCHED FIL-STIK TO HIDE THE BRAD NAIL.

NOTE: DO NOT END RUN WITH A SECTION SHORTER THAN 36" [914.4mm].

**WOOD SARATOGA SERIES
WITH VERTICAL STILES**

STILE/CORNER INSTALLATION



INSIDE/OUTSIDE CORNER AND VERTICAL STILE INSTALLATION

ALL WALL SURFACES MUST BE CLEAN, SMOOTH, DRY AND FREE OF ANY LOOSE PAINT OR ANY OTHER IRREGULARITIES WHICH WOULD PREVENT GOOD ADHESION.

MEASURE THE DISTANCE BETWEEN THE BOTTOM OF THE WAINSCOT TRIM AND TOP OF THE WOOD COVE BASE. CUT INSIDE/OUTSIDE CORNER AND VERTICAL STILE TO THIS LENGTH.

APPLY 1/8" [3.2mm] BEAD OF CONSTRUCTION ADHESIVE ONTO THE BACK OF THE INSIDE/OUTSIDE CORNER AND VERTICAL STILE. INSTALL THE INSIDE/OUTSIDE CORNER AND VERTICAL STILE, ENSURING THEY ARE VERTICALLY PLUMB AND SQUARE. RUB EACH INSIDE/OUTSIDE CORNER AND VERTICAL STILE WITH A CLEAN SOFT CLOTH AND APPLY MEDIUM HAND PRESSURE TO ENSURE MAXIMUM ADHESION TO THE WALL SURFACE.

NOTE: C/S RECOMMENDS INSTALLING VERTICAL STILES EVERY 32" [812.8mm] O.C.

WHILE THE ADHESIVE IS DRYING, DISCRETELY APPLY SEVERAL BRAD NAILS THROUGH THE TRIM INTO THE WALL TO HOLD THE TRIM IN PLACE. IT IS RECOMMENDED TO APPLY THE BRAD NAILS NO LESS THAN 2'-0" [609.6mm] O.C. USE THE C/S SUPPLIED COLOR MATCHED FIL-STIK TO HIDE THE BRAD NAIL.

NOTE: IT IS RECOMMENDED THAT CLEAN-UP BE DONE AS INSTALLATION PROGRESSES.

