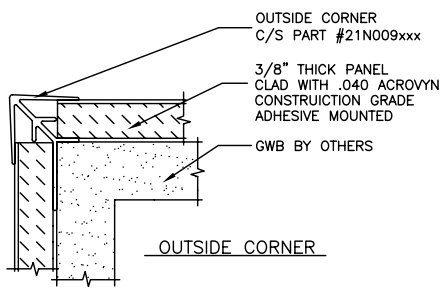
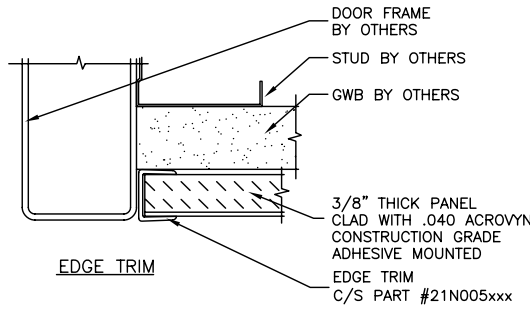


WALL PANEL FABRICATION SCHEDULE

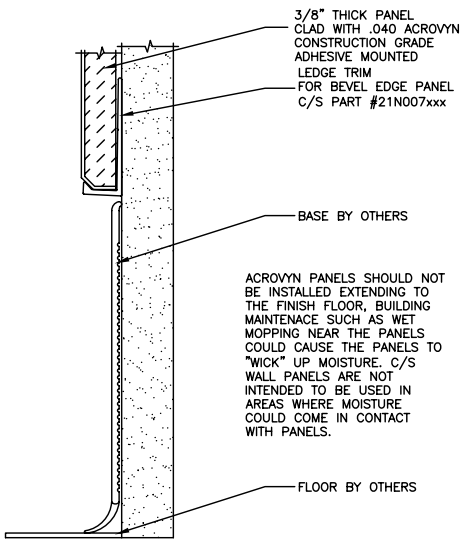
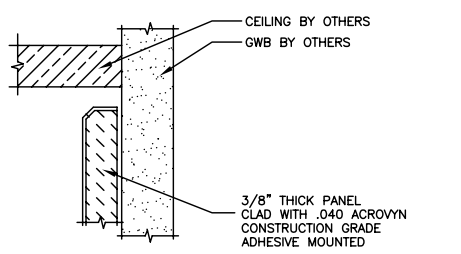
RELEASE	PANEL SIZE	COLOR



QTY & HGT REQ. \_\_\_\_\_  
 COLOR: \_\_\_\_\_



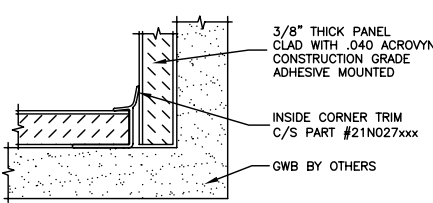
QTY & HGT. REQ. \_\_\_\_\_  
 COLOR: \_\_\_\_\_



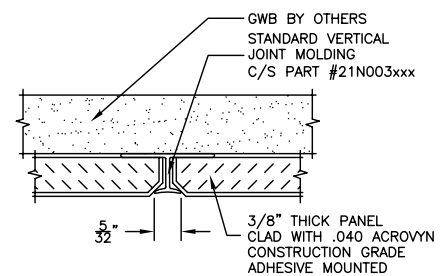
BEVELED EDGE WALL PANEL AT FULL HEIGHT



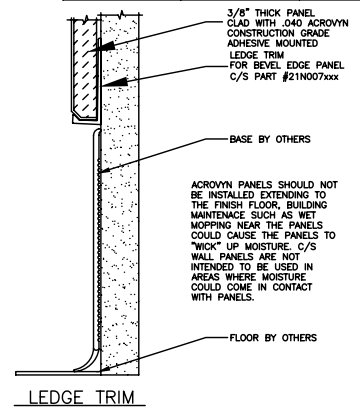
C/S WALL PANELS ARE UL RATED AND MEET CLASS 1 FIRE RATING WHEN TESTED IN ACCORDANCE WITH ASTM-E84-01



QTY & HGT REQ. \_\_\_\_\_  
 COLOR: \_\_\_\_\_



QTY & HGT. REQ. \_\_\_\_\_  
 COLOR: \_\_\_\_\_



QTY & HGT REQ. \_\_\_\_\_  
 COLOR: \_\_\_\_\_

ACROVYN PANELS SHOULD NOT BE INSTALLED EXTENDING TO THE FINISH FLOOR, BUILDING MAINTENANCE SUCH AS WET MOPPING NEAR THE PANELS COULD CAUSE THE PANELS TO "WICK" UP MOISTURE. C/S WALL PANELS ARE NOT INTENDED TO BE USED IN AREAS WHERE MOISTURE COULD COME IN CONTACT WITH PANELS.

COLOR: \_\_\_\_\_  
 PLEASE SELECT FROM ANY STANDARD 60 COLORS. CHAMELEON PATTERNS/COLORS ARE AVAILABLE ON PANELS ONLY. TRIMS ARE ONLY AVAILABLE IN SOLID/BASE COLORS.  
 TEXTURE: \_\_\_\_\_  
 SANDSTONE TEXTURE IS STANDARD  
 PEBBLETTE TEXTURE NOT AVAILABLE  
 ADDITIONAL TEXTURES AVAILABLE UPON REQUEST  
 ADDITIONAL TEXTURES CAN EFFECT PRICE  
 NOTE: MAXIMUM BEVELED EDGE PANEL SIZES ARE 43"x114" & 43"x90". ALL WALL PANELS HAVE A NOMINAL THICKNESS OF 3/8".

C/S GROUP

MUNCY, PA 17756  
 VISTA, CA 92083  
 MISSISSAUGA, ONTARIO, CANADA

PROJECT:		REV. :
LOCATION:		F&F:
CUSTOMER:		SHEET OF
AGENT:		JOB NO.
DWG. BY:	DATE:	