



Expansion Joint Covers

For Parking Structures

*PTC Joints @
City Creek Center
provides significant
vertical displacement
without damage or noise.*

With C/S Zip Block— Everyone Wins!

Because of the unique performance features of the Zip Block joint system, there is absolutely no downside!

The design engineer can confidently specify a seal system with no known equals, eliminating substitution of inferior products like elastomeric concrete! With Zip Block, the installer not only enjoys the benefit of a clean installation, but can get it done in half the time, thereby maximizing one's earnings capability.

Last, by no means least, the owner truly benefits from a trouble-free joint system—no more law suits and “closed for repair” signs.

Why wouldn't you use Zip Block?

Providing a win-win for your clients



Chuck Dunscombe, President, Contech Services Inc., has 30 years of experience in installing Seismic/Thermal Traffic Seals and Architectural Expansion Joint Covers on stadiums, malls and parking structures.

Contech Services' demanding retail customers expect them to complete the Expansion Joint replacement work during short, shut-down periods. In as little as 12 hours, Contech must remove the seal, repair the concrete substrate and install a new EJC Seal to allow the traffic access. According to Chuck, “A few short hours after installing the Zip Block, you can allow traffic access across the seal with confidence in its long-term performance.”

According to Chuck, C/S Zip Block Expansion Joint Covers have proven to be the most cost-competitive, waterproof, long-lasting maintenance free seal he has installed. To date he has had zero warranty claims of any kind. Now that's a winner!

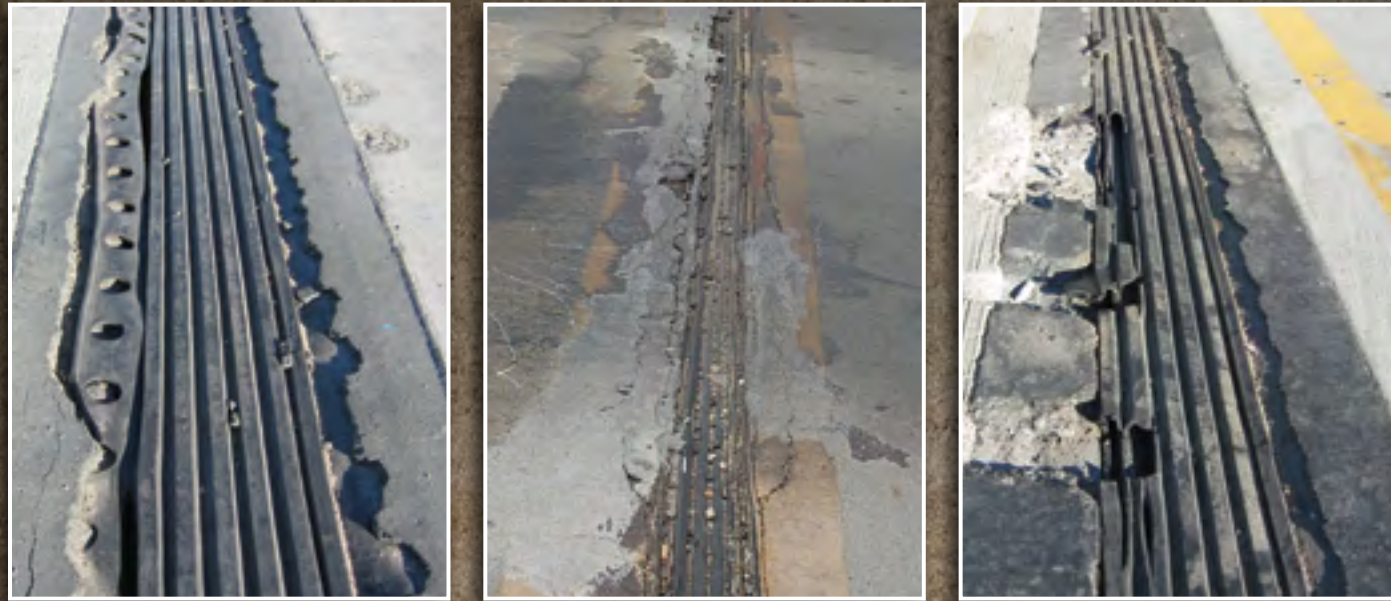


Zip Block @ Channelside Parking Garage

Timothy Haahs Parking Consultants specified 130' runs of Zip Block for the Channelside Parking Facility in downtown Tampa, Florida. Spectrum Contracting installed the covers.

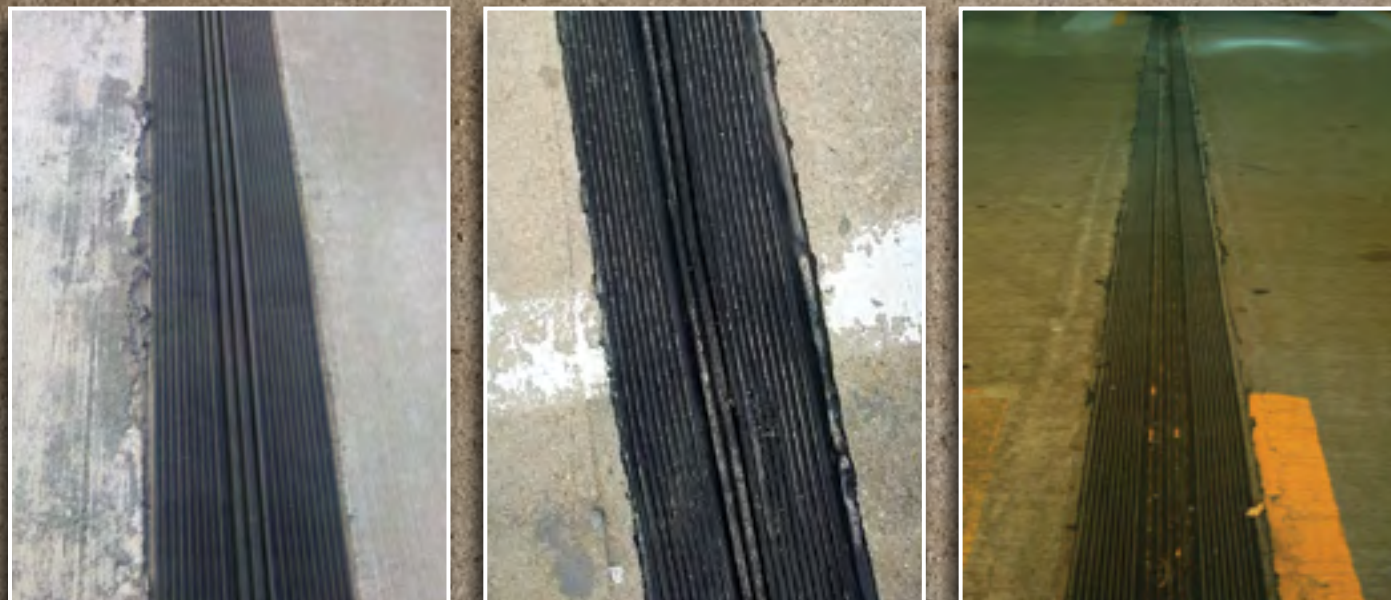
Why use products that are just not up to the task?

Failed Elastomeric Concrete Seals



Zip Block is subjected to rigorous testing including freeze/thaw and heavy rolling load tests that clearly demonstrate superior performance. Now with over 7 years of history to support the lab testing, the proof is shown right here.

Zip Block



University of Houston, installed in May 2006

King of Prussia Mall, installed in September 2003

St. Francis, installed in May 2004

Zip Block Seals

For comprehensive information on this product, visit www.c-sgroup.com/expansion-joint-covers

Model ZB

Installs in half the time of elastomeric concrete systems

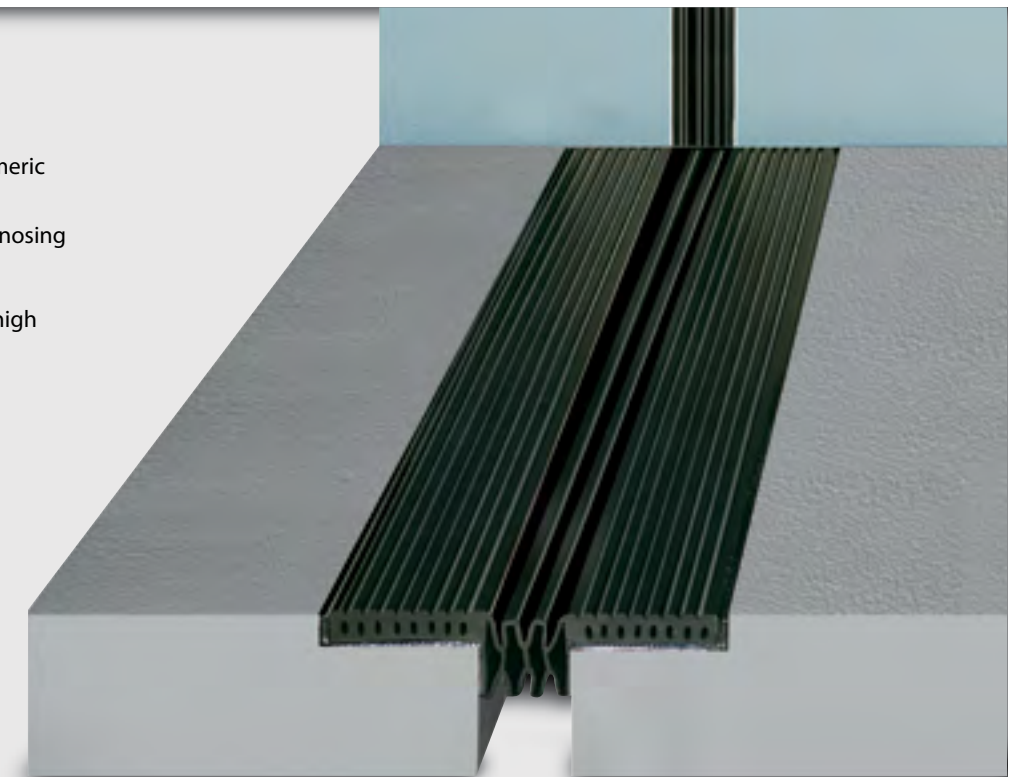
Rugged EPDM seal with integral nosing

For joint sizes between 1" and 4"

Waterproof system installs with high strength epoxy

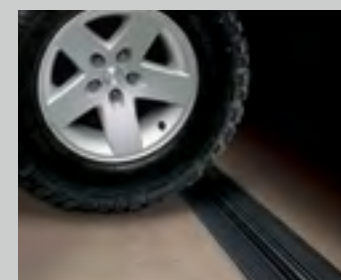
Available in lengths up to 200' to minimize splicing

Available with fire barrier



Installer Friendly

Consider this—preparing the block-out and applying the epoxy bed takes exactly the same amount of time and effort as applying the tack coat on an elastomeric nosing system. Laying the ZB seal in place is the same as laying the conventional wing seal in place but the block-out is already filled by the integral ZB wing. This means that there is only the edge sealant to apply rather than taping the seal, mixing and applying the elastomeric concrete. Add to this the ability to “dry fit” prior to adhesive application and you can see why installers love it!



Exhaustive Testing

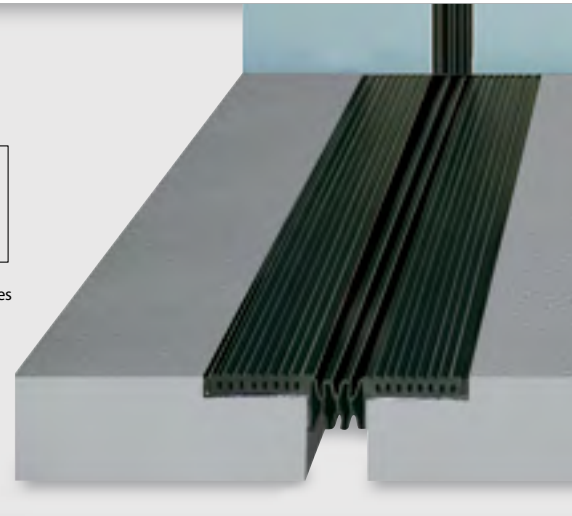
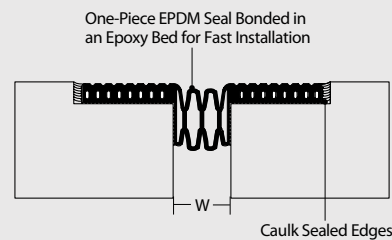
Zip Block was subjected to rigorous testing, including rolling loads of 3,000 lb per wheel, with simultaneous vertical slab deflection; sub-zero temperature testing, including several freeze-thaw cycles; and all applicable ASTM cycling tests. At 35,000 cycles, the seal exhibited no wear or tear from the rolling load. The seal was also tested to simulate shear stress created by a rapidly moving vehicle braking abruptly. The result is a seal you can depend on, backed by our full product warranty.

Parking and Stadium Seals

For comprehensive information on this product, visit www.c-sgroup.com/expansion-joint-covers

Model ZB

One-piece EPDM seal installs fast
No messy elastomeric concrete required
1" to 4" seals available
ADA compliant
See page 5 for details

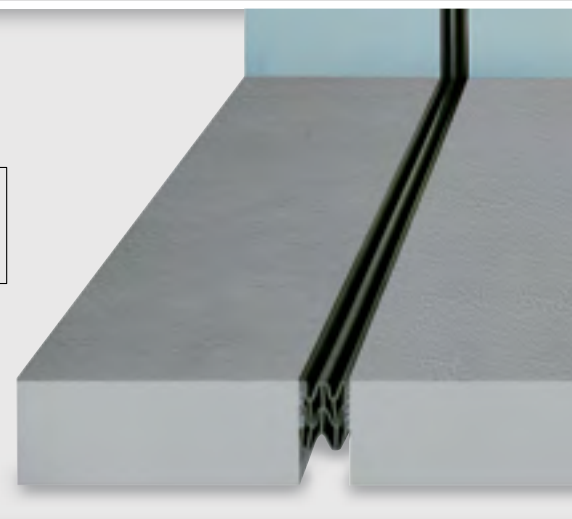
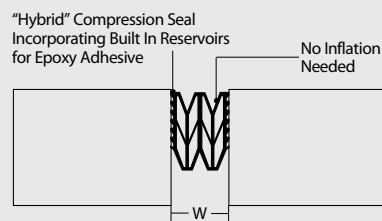


MODEL DATA FLOOR TO FLOOR COVERS (floor to wall available)

JOINT WIDTH	MINIMUM OPENING	MAXIMUM OPENING	EXPOSED SURFACE	SPECIFY MODEL
1.0"	0.5"	1.5"	8.0"	ZB 100
2.0"	1.0"	3.0"	9.0"	ZB 200
3.0"	1.5"	4.5"	10.0"	ZB 300
4.0"	2.0"	6.0"	11.0"	ZB 400

Model HB

Unique serrated seal design improves installation and enhances adhesion of the seal to joint walls
ADA compliant

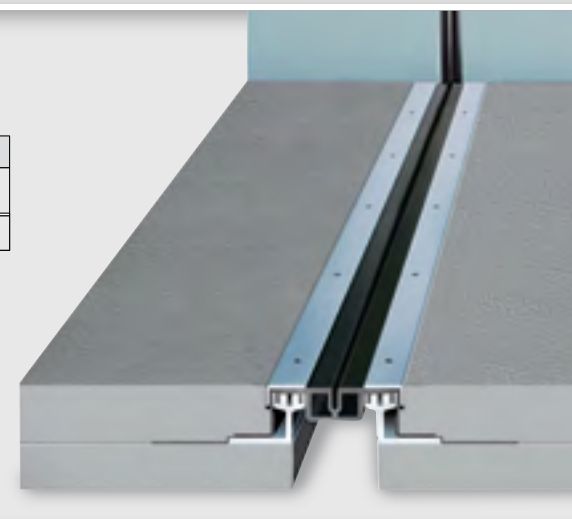
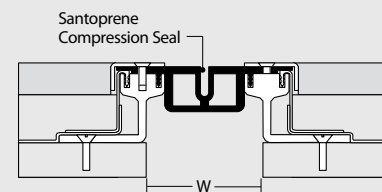


MODEL DATA FLOOR COVERS

JOINT WIDTH	MINIMUM OPENING	MAXIMUM OPENING	EXPOSED SURFACE	SPECIFY MODEL
1.0"	0.6"	1.5"	1.0"	HB 100
2.0"	1.13"	3.0"	2.0"	HB 200
3.0"	1.5"	4.5"	3.0"	HB 300
4.0"	2.0"	6.0"	4.0"	HB 400

Model PDS

Continuous Santoprene membrane seal element
Stainless capping
Continuous wings tie into sheet waterproof membrane
ADA compliant



MODEL DATA FLOOR COVERS (floor to wall available)

JOINT WIDTH	MINIMUM OPENING	MAXIMUM OPENING	EXPOSED SURFACE	SPECIFY MODEL
2.0"	1.0"	3.0"	4.75"	PDS 200
4.0"	2.0"	6.0"	6.75"	PDS 400

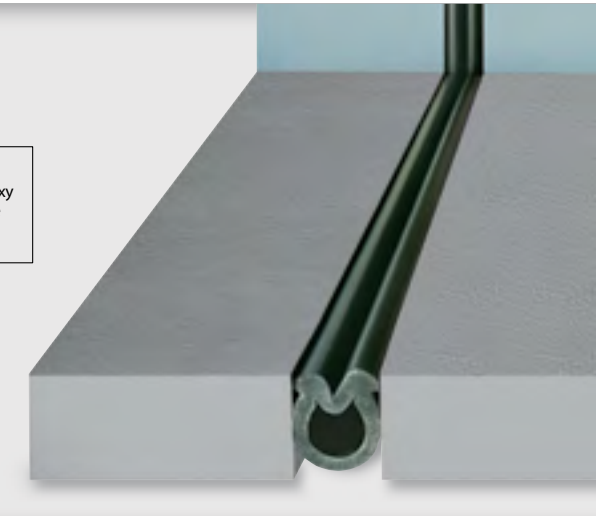
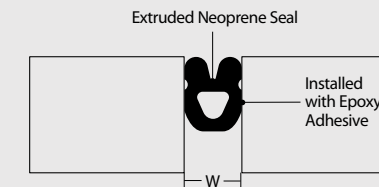
For odd sized joints, call (800) 233-8493

Exterior Seals

For comprehensive information on this product, visit www.c-sgroup.com/expansion-joint-covers

Model HBF

For horizontal and vertical applications where economy is important
For application in minimal traffic areas

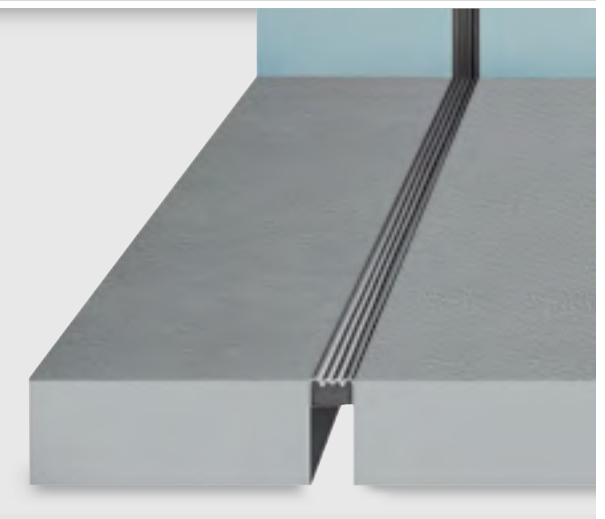
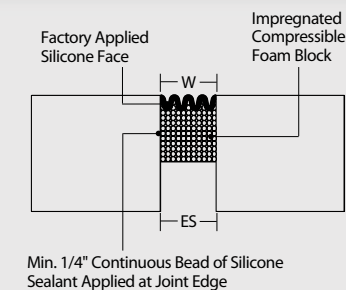


MODEL DATA FLOOR COVERS

JOINT WIDTH	MINIMUM OPENING	MAXIMUM OPENING	EXPOSED SURFACE	SPECIFY MODEL
.87"	0.43"	1.25"	.87"	HBF 100
1.68"	.87"	2.5"	1.68"	HBF 200
2.56"	1.37"	3.75"	2.56"	HBF 300
3.43"	1.81"	5.0"	3.43"	HBF 400

Model VF/HF

For vertical applications where the attachment of metal frames is undesirable/impractical
Silicone face colors coordinate with building facade
Supplied in 5' lengths



Min. 1/4" Continuous Bead of Silicone Sealant Applied at Joint Edge

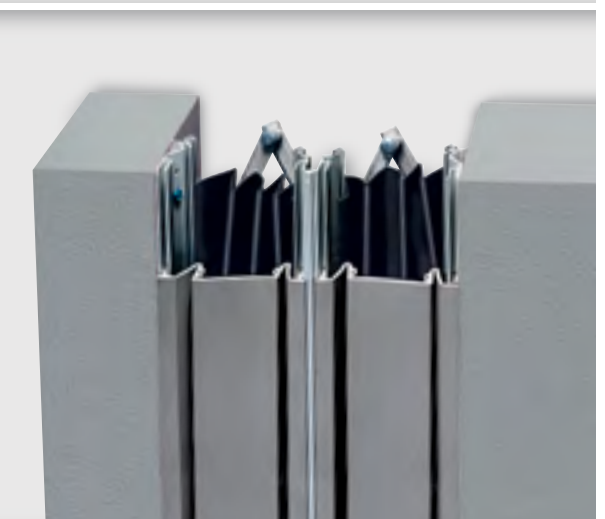
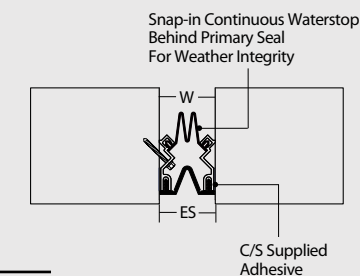
MODEL DATA FLOOR COVERS

JOINT WIDTH	MINIMUM OPENING	MAXIMUM OPENING	EXPOSED SURFACE	SPECIFY MODEL
1"	0.5"	1.5"	1.0"	VF 100
2"	1.0"	3.0"	2.0"	VF 200
3"	1.5"	4.5"	3.0"	VF 300
4"	2.0"	6.0"	4.0"	VF 400
6"	3.0"	9.0"	6.0"	VF 600
8"	4.0"	12.0"	8.0"	VF 800

VF for Vertical Installations
HF for Horizontal Installations

Model SF

Multi-directional movement
Thermoplastic seals color coordinate with building facade
Heat welded, weather tight transitions



MODEL DATA FLOOR COVERS

JOINT WIDTH	MINIMUM OPENING	MAXIMUM OPENING	EXPOSED SURFACE	SPECIFY MODEL
2"	0.75"	3.0"	2.0"	SF 200
4"	0.75"	6.0"	4.0"	SF 400
6"	2.0"	9.0"	6.0"	SF 600
8"	2.0"	12.0"	8.0"	SF 800
10"	2.0"	15.0"	10.0"	SF 1000

For odd and larger sized joints, call (800) 233-8493

“After 5 years of heavy traffic and snow, the KB covers work like the day they were installed.”

–Tom Poremba, Project Manager, CTA Inc.

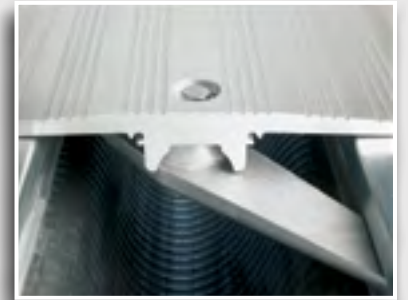
At Boise State University, CTA Architects and Engineers were assigned to design a new parking garage next to an existing garage and to tie both structures together. CTA needed a product that could act as a substantial crossover bridge between the garages, yet provide adequate seismic separation so that each structure could move independently.

Using post tension construction on the new structure, CTA specified 6" KB metal covers for the crossover bridges on all floors between the two garages. CTA also specified 4" KB covers for use between the masonry stair tower and the cast-in-place garage. According to Tom Poremba, “the KB metal covers are quiet, feel completely solid to both pedestrians and automobiles, and are still performing perfectly five years after being installed.”



C/S Seismic Covers

The sounds you don't hear means that they will last, and last!



KB's patented turnbar housing reduces lateral load damage.

With the KB Metal Cover System there are no loose or broken cover plates and no clanging even if an automobile passes over it.

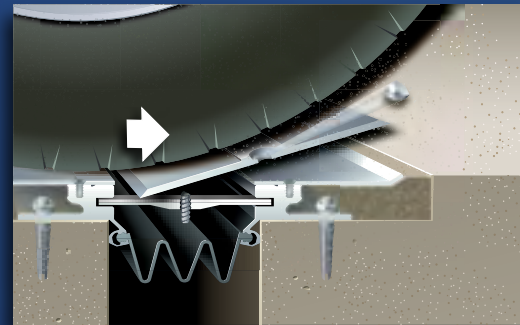


PTC's rotation damper system prevents flapping.

The PTC Cover System allows for significant deflection of the adjacent floor slabs without the damage associated with a conventional seismic system.

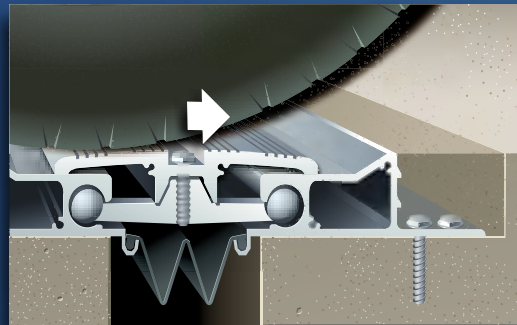
C/S Seismic Covers

Traditional Metal Covers
loosen, clang and break away



Failure of metal covers in parking applications proves it's not enough to take covers used for interior pedestrian applications and simply beef up the plate and frames. Constant impact of cars and deflection of the concrete slab quickly loosens or destroys these covers since all the force from the impact is transferred to the center bolt.

Our Solution:
Transfer the force



Since most metal covers fail because the bolts that hold down the cover shear off, our solution protects the center bolt from shear forces with a unique plate design and stronger cast tumblers. With our KB metal cover, the impact of the moving vehicle on the plate is simply transferred to the slab.



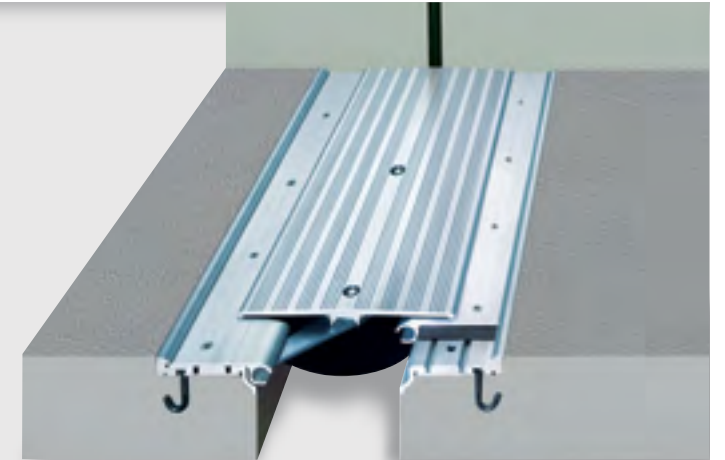
KB Seismic Cover @ NASCAR Hall of Fame

Seismic Covers

For comprehensive information on this product, visit www.c-sgroup.com/expansion-joint-covers

Model KBC

Load dampening design prevents shearing of bolts to eliminate loose covers
Capable of 1/2" of vertical displacement of slabs



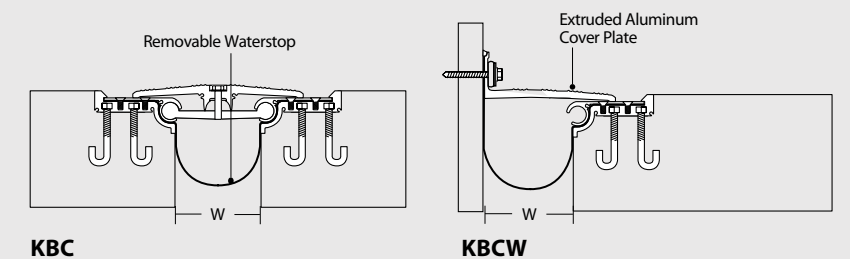
MODEL DATA FLOOR TO FLOOR COVERS

JOINT WIDTH	MINIMUM OPENING	MAXIMUM OPENING	EXPOSED SURFACE	SPECIFY MODEL
4"	1.25"	6.5"	11.44"	KBC 400
5"	2.5"	9.5"	14.44"	KBC 500
6"	2.5"	9.5"	15.44"	KBC 600
7"	3.25"	12.5"	18.38"	KBC 700
8"	3.25"	12.5"	19.38"	KBC 800

MODEL DATA FLOOR TO WALL COVERS

4"	2.75"	5.0"	7.75"	KBCW 400
5"	4.0"	7.75"	9.75"	KBCW 500
6"	4.0"	7.75"	10.75"	KBCW 600
7"	5.75"	10.25"	12.69"	KBCW 700
8"	5.75"	10.25"	13.69"	KBCW 800

Contact factory for KB/KBW movement data.

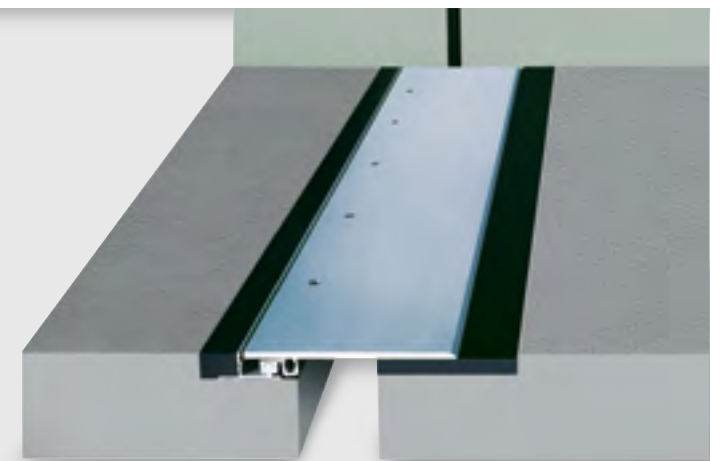


Model PTCN

Designed to handle significant deflection of adjacent floor slabs.

Rotation damper keeps cover plate from rattling

6" to 24" joints, larger sizes available

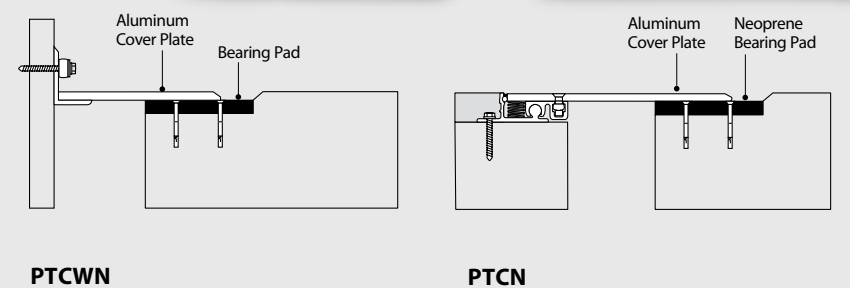


MODEL DATA FLOOR TO FLOOR COVERS

JOINT WIDTH	MINIMUM OPENING	MAXIMUM OPENING	EXPOSED SURFACE	SPECIFY MODEL
6"	0.00"	11.0"	18.625"	PTCN 600
7"	0.00"	12.0"	19.625"	PTCN 700
8"	0.00"	13.0"	20.625"	PTCN 800
9"	0.00"	14.0"	21.625"	PTCN 900
10"	0.00"	16.0"	23.625"	PTCN 1000
11"	0.00"	17.0"	24.625"	PTCN 1100
12"	0.00"	19.0"	26.625"	PTCN 1200

MODEL DATA FLOOR TO WALL COVERS

6"	0.00"	11.25"	14.0"	PTCWN 600
7"	0.00"	12.25"	15.0"	PTCWN 700
8"	0.00"	13.25"	16.0"	PTCWN 800
9"	0.00"	14.25"	17.0"	PTCWN 900
10"	0.00"	16.25"	19.0"	PTCWN 1000
11"	0.00"	17.50"	20.0"	PTCWN 1100
12"	0.00"	19.0"	22.0"	PTCWN 1200





Construction Specialties™

6696 State Route 405, Muncy, Pennsylvania 17756 U.S.A., 570-546-5941
895 Lakefront Promenade, Mississauga, Ontario L5E 2C2 Canada, 905-274-3611
▶ www.c-sgroup.com



The C/S Family of Products

For more than 60 years, Construction Specialties has been a leader in architectural specialty products, including: Acrovyn® Wall and Door Protection, Pedisystems® Entrance Flooring, Expansion Joint Covers, Cubicle Track and Curtains, Smoke and Explosion Venting Systems, Architectural Grilles, Architectural Louvers and Sun Controls.

We have operations throughout the world and can provide C/S Products virtually anywhere. For a complete list of our international locations, visit www.c-sgroup.com.



For the nearest C/S representative, or literature and samples, call toll free 800-233-8493 in U.S.A. and 888-895-8955 in Canada, or visit www.c-sgroup.com

©Copyright 2012 Construction Specialties, Inc.
Construction Specialties, Inc. reserves the right to make design changes
or to withdraw any design without notice. Printed in U.S.A. Series 13

