



# USGBC LEED® Credit Contributions: C/S Pedisystems® Entrance Flooring

## MR Credit 4, Recycled Content:

C/S sources materials with the highest possible recycled content for all Pedisystems® products. Contact us for the most up-to-date recycled content percentages.

## MR Credit 6, Rapidly Renewable Materials:

C/S offers a rapidly renewable bamboo and cork tread inserts for Pedisystems® products.

## IEQ Credit 5, Pollutant Source Control:

This credit requires designers to employ permanent entryway systems (grilles, grates, etc.) at least 10 ft. long to prevent dirt, water and particulate from entering the building at all high traffic entryways.

## IEQ Credit 4.3, Low-Emitting Materials (Carpet Systems):

Many C/S Pedisystems® meet California 1350 test standards for low VOCs, an approved equivalent to the CRI Green Label Plus certification. Passing this test also qualifies Pedisystems for use in Collaborative for High Performance Schools (CHPS) projects.

C/S supplies non-PVC components for PediTred products.

## ID Credit:

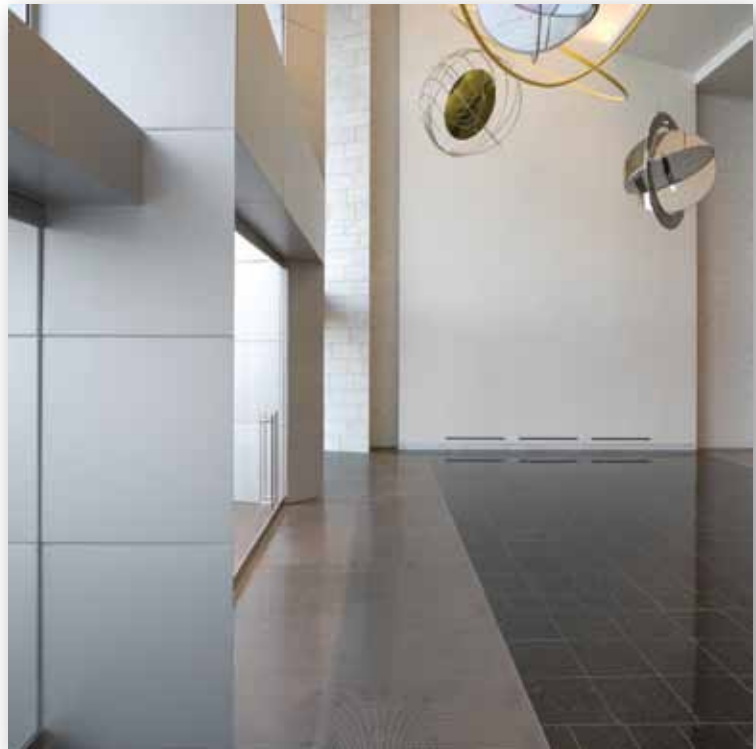


C/S PediTred G4 architectural grids have earned MBDC Cradle to Cradle: Silver Certification.

Contact us to speak with one of our LEED Accredited Professionals to learn more about LEED or how our products can help contribute to your project's goals.

## ISO 14001 Certified Manufacturing

C/S sustainable products can be viewed by visiting [www.buildinggreen.com](http://www.buildinggreen.com) or [www.c-sgroup.com](http://www.c-sgroup.com)



In LEED® IEQ Credit 5, the architect/designer is encouraged to specify permanent entryway systems (grilles, grates, etc.) at least 10 ft. in length to capture dirt, water and other particulates at all high volume entryways. This results in improved indoor air quality, reduced maintenance costs and safer floor surfaces that will look beautiful longer.

A C/S Pedisystem mat or grid not only fills this need but goes way beyond, environmentally. Listed on the left are the ways that Pedisystem products can contribute toward your goal of LEED certification.



**Construction Specialties™**

6696 State Route 405  
Muncy, Pennsylvania 17756  
800-233-8493